

ANKEWAY Android Double Din Car Stereo

ANKEWAY Android Double Din Car Stereo User Manual

Model: Android Double Din Car Stereo

1. PRODUCT OVERVIEW

The ANKEWAY Android Double Din Car Stereo is a versatile multimedia system designed to enhance your in-car entertainment and navigation experience. Featuring a large 10.1-inch 1080P HD touch screen, it integrates advanced functionalities such as GPS navigation, HiFi sound effects, Wi-Fi, Bluetooth, RDS/FM radio, and Mirror-Link capabilities.

This system runs on an optimized Android 9.1 operating system, providing a smooth and intuitive user interface for accessing various applications like Google Maps, YouTube, and Spotify. It supports dual USB input, external microphone, and includes a backup camera for added convenience and safety.



Figure 1.1: Front view of the ANKEWAY Android Double Din Car Stereo, showcasing its large 10.1-inch touchscreen display.

2. SAFETY INFORMATION

Please read all safety warnings and instructions carefully before installing and operating this device. Failure to follow these instructions may result in electric shock, fire, and/or serious injury.

- **Professional Installation Recommended:** Due to the complexity of car electrical systems, it is highly recommended to have this product wired, installed, and debugged by a professional electrician or car audio specialist.
- **Power Supply:** Ensure the car's voltage meets the required 12V standard. Incorrect voltage can damage the device.
- **Wiring:** Always connect wires according to the provided wiring diagram. Incorrect wiring can cause malfunctions or damage.
- **Driving Safety:** Do not operate the device in a way that distracts you from driving. Always prioritize road safety.
- **Temperature:** Avoid exposing the device to extreme temperatures or direct sunlight for prolonged periods.

- **Moisture:** Keep the device away from water and excessive moisture to prevent damage.

3. WHAT'S IN THE BOX

Verify that all components listed below are included in your package:

- 1 x ANKEWAY Android Double Din Car Stereo Unit
- 1 x Backup Camera
- 1 x GPS Antenna
- 1 x User Manual
- 1 x External Microphone
- 2 x USB Adapter Cables
- 2 x Installation Brackets
- 5 x Wiring Kits



Figure 3.1: All accessories included with the ANKEWAY Android Double Din Car Stereo.

4. PRODUCT SPECIFICATIONS

Feature	Specification
Model Name	Android Double Din Car Stereo
Operating System	Android 9.1 (Upgraded)
RAM / ROM	1GB RAM / 16GB ROM
CPU	4 Core CPU
Screen Size	10.1 Inches

Display Resolution	1080P HD
Touch Screen Type	High Sensitivity 2.5D Curved Edge Tempered Glass
Audio Output	4x60W HiFi Sound Quality
Connectivity	Bluetooth, Wi-Fi, Dual USB, Mirror-Link
Radio	RDS/FM Radio
Navigation	GPS Navigation (Pre-installed apps like Here WeGO)
Input	Dual USB, Built-in Microphone, External Microphone, Backup Camera
Product Dimensions (with screen edge)	9.9 in * 5.6 in * 2.0 in / 25.2 cm * 14.2 cm * 5 cm
Minimum Installation Size	7.0 in * 4.0 in * 2.0 in / 17.8 cm * 10.2 cm * 4.9 cm (2 DIN/12V)

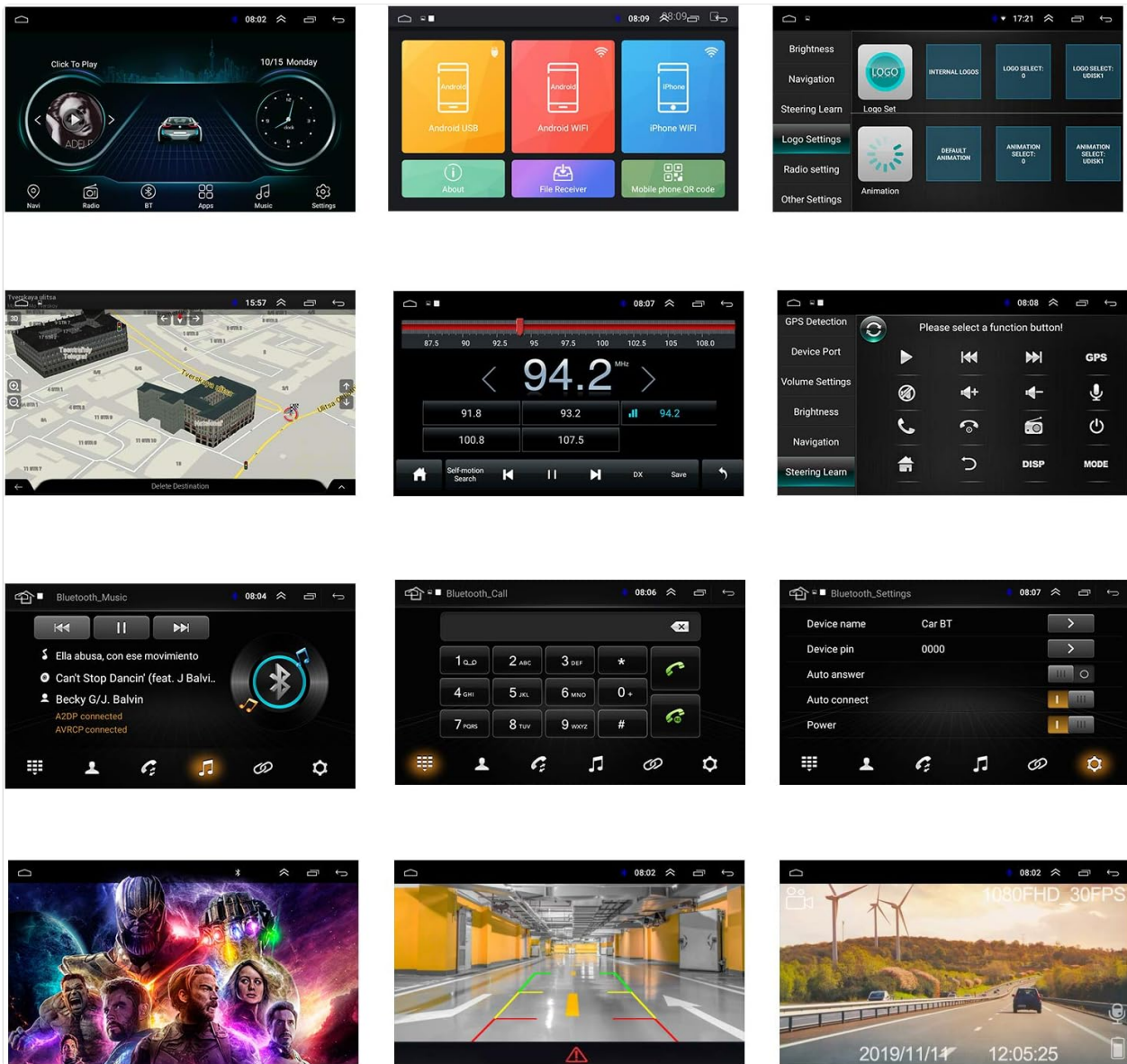


Figure 4.1: Detailed dimensions of the ANKEWAY Android Double Din Car Stereo for installation planning.

5. SETUP & INSTALLATION

5.1 Physical Installation

The ANKEWAY car stereo is designed for double DIN installation. Please measure your car's center console size and mounting hole size to ensure compatibility. An installation frame is not included and may need to be purchased separately depending on your vehicle model.

- **Mounting:** The unit can be installed directly into a double DIN slot. If your car's center console is large, the 10.1-inch screen can be embedded. For smaller consoles, a hanging installation is possible where the screen is positioned in front of the console.
- **Professional Assistance:** It is strongly recommended to seek professional assistance for installation to ensure proper wiring and functionality.

5.2 Wiring Diagram

Refer to the following diagram for connecting the main cables to your car's electrical system. Ensure all connections are secure and correctly matched to prevent damage to the unit or vehicle.



Figure 5.1: Main cable wiring diagram, showing connections for power, speakers, and other functions.

Key Wiring Connections:

- **ACC:** Connect to car ignition detection cable.
- **B+:** Connect to car battery positive.
- **GND:** Connect to battery negative ground.
- **KEY1/KEY2:** Connect to steering wheel control cables (SWC). Only one of these may be needed.
- **BACK:** Connect to rear camera signal input.
- **ANT-CONT:** Antenna control (no wiring if no antenna).
- **LAMP CONTROL (ILL):** Connect to car front small light.
- **Speaker Outputs (RL/RR/FL/FR):** Connect to corresponding car speakers.

Special Note: If your car's original ISO cable is not compatible, you may need to use the provided adapter cable or purchase a compatible one. For amplifier audio output, use the provided RCA cables instead of "AMP-CON" to power the amplifier.

5.3 Initial Setup

After successful installation, power on the device. The initial setup typically involves:

1. **Language Selection:** Choose your preferred system language (English, French, Italian, German, Spanish, Portuguese, Chinese, Japanese, etc.).
2. **Time and Date:** Set the correct time zone, date, and time. This can often be synchronized via GPS or network.
3. **Wi-Fi Connection:** Connect to a Wi-Fi hotspot to enable internet access for app downloads and updates.
4. **Google Account:** Log in with your Google account to access the Google Play Store and other Google services.

6. OPERATING INSTRUCTIONS

6.1 Basic Operations

The unit features a responsive 10.1-inch HD touchscreen and side buttons for common functions.

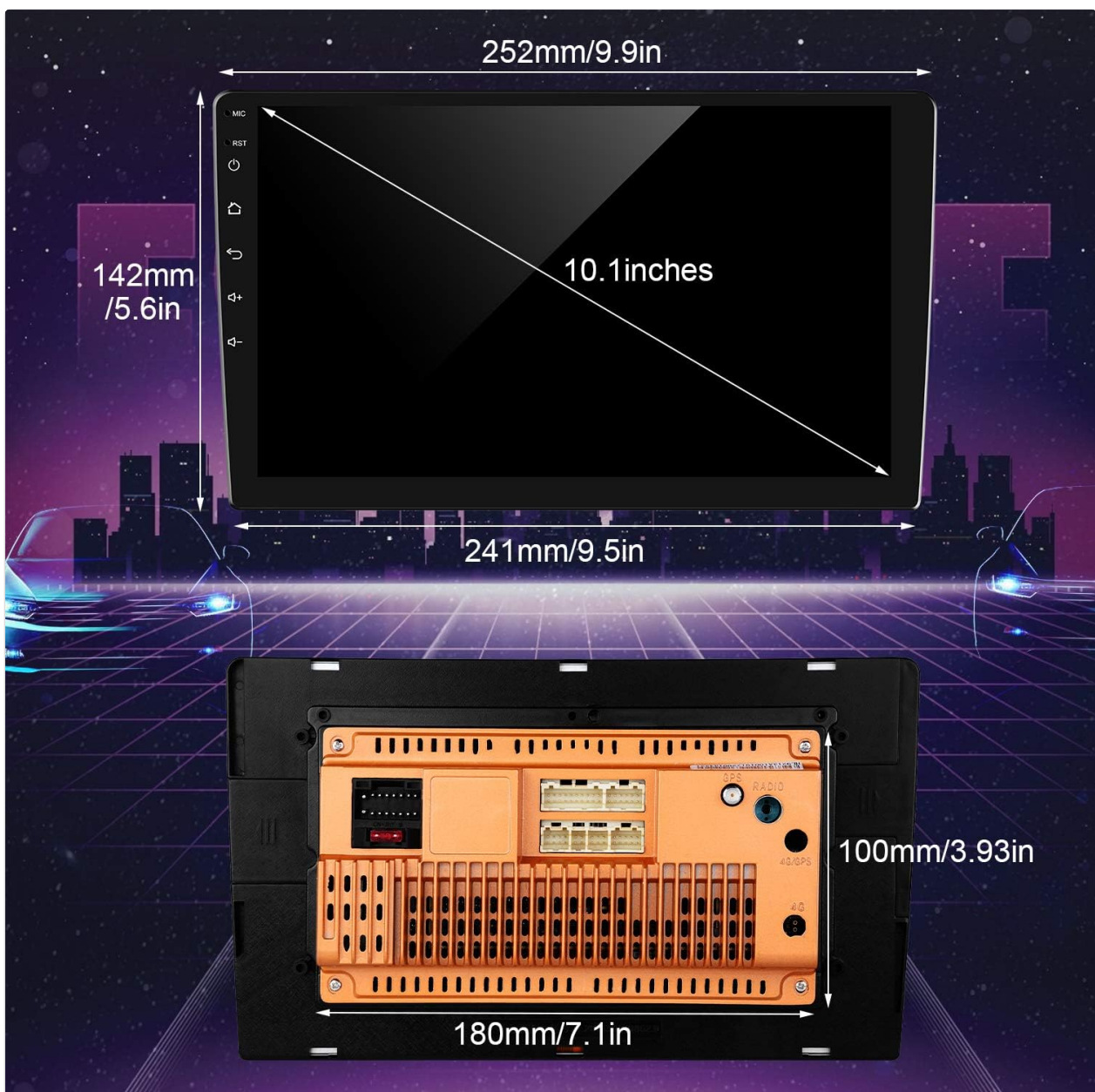


Figure 6.1: Main interface of the car stereo, showing various application icons.

- **Power On/Off:** Press and hold the power button (usually on the top left) to turn the unit on or off. A short press typically puts it into standby mode.
- **Volume Control:** Use the volume buttons on the side or the on-screen controls to adjust audio output.
- **Home Button:** Returns to the main home screen.
- **Back Button:** Navigates back to the previous screen or menu.
- **Screen Brightness:** Adjust screen brightness via the system settings for optimal visibility in different lighting conditions.

6.2 Android System Navigation

Navigate the Android system similar to a tablet or smartphone. Swipe left/right to access different app pages. Tap icons to open applications.



Figure 6.2: Examples of different user interface screens, including settings and app menus.

- **App Drawer:** Access all installed applications from the app drawer icon.
- **Settings:** Configure system settings, network connections, display options, and more.
- **Google Play Store:** Download and install additional applications.

6.3 Bluetooth Connectivity

Connect your smartphone via Bluetooth for hands-free calling, music streaming, and contact synchronization.



Figure 6.3: Bluetooth interface for calls and music, alongside steering wheel control setup.

1. Go to the Bluetooth settings menu on the car stereo.
2. Enable Bluetooth on your smartphone and search for available devices.
3. Select "Car BT" or a similar name from the list on your phone and pair.
4. Confirm the pairing code if prompted.

6.4 Wi-Fi Hotspot

Connect the car stereo to a Wi-Fi hotspot (e.g., from your smartphone) to access online features and applications.



Figure 6.4: Illustration of Wi-Fi hotspot connectivity and Mirror-Link functionality.

1. Go to system settings and select "Wi-Fi".
2. Turn on Wi-Fi and select your desired network.
3. Enter the password if required and connect.

6.5 GPS Navigation

The unit comes with pre-installed GPS navigation capabilities. You can use applications like Here WeGO or download others from the Play Store.



Figure 6.5: Display showing the radio interface and a navigation map.

- Ensure the GPS antenna is properly connected and positioned for optimal signal reception.
- Open the navigation application from the main menu.
- Enter your destination and follow the on-screen instructions.

6.6 Radio Function

Access the built-in RDS/FM radio for local broadcasts.

- Tap the "Radio" icon on the home screen.
- Use the on-screen controls to scan for stations, save favorites, and adjust frequency.

6.7 Mirror-Link (Easy Connection)

Mirror-Link allows you to display your smartphone screen on the car stereo. It supports both Android and iOS devices via USB or Wi-Fi.

- Download the "Easy Connection" app on your smartphone (from Google Play / App Store).
- Connect your smartphone to the car stereo via USB or Wi-Fi.

- Open the "Easy Connection" app on the car stereo.
- For Android phones, connect both USB/Wi-Fi and Bluetooth for simultaneous video and audio. Android phones support two-way control (phone to radio or radio to phone).
- For iPhones, only one-way control (phone to radio) is supported, and Bluetooth connection is not required for Mirror-Link.

6.8 Backup Camera

The included backup camera provides a clear view of the area behind your vehicle when reversing.



Figure 6.6: Display showing the backup camera feed with guidelines and a driving recorder view.

- Ensure the backup camera is properly installed and connected to the "BACK" input.
- When the vehicle is put into reverse gear, the display will automatically switch to the camera view.

6.9 Multimedia Playback

Play audio and video files from various sources, including USB drives.

- **USB Playback:** Insert a USB drive into one of the dual USB ports. The system will detect media files and allow playback through the "Local Music" or "Video" apps.

- **1080P HD Video:** The unit supports 1080P HD video playback for a high-quality visual experience.



Figure 6.7: High-definition video playback on the car stereo screen.

6.10 Sound Settings (Equalizer)

Customize your audio experience with the built-in equalizer and sound effects.

- Access "Sound Settings" from the main menu or settings.
- Adjust the volume of individual speakers (front/rear, left/right).
- Select from preset music styles (Pop, Rock, Jazz, Classical) or create a custom equalizer profile.

6.11 Steering Wheel Control (SWC)

If your vehicle supports steering wheel controls, you can configure them to operate the car stereo.

- Connect the "KEY1" and "KEY2" cables to your car's steering wheel control wires.
- Go to "Car Settings" or "Steering Learn" in the system menu.
- Follow the on-screen instructions to map your steering wheel buttons to specific functions on the stereo (e.g., volume up/down, track skip).

7. MAINTENANCE

Proper maintenance ensures the longevity and optimal performance of your ANKEWAY car stereo.

- **Screen Cleaning:** Use a soft, lint-free cloth to gently wipe the touchscreen. For stubborn smudges, slightly dampen the cloth with water or a screen-safe cleaner. Avoid abrasive materials or harsh chemicals.
- **Software Updates:** Periodically check for system software updates via Wi-Fi to ensure you have the latest features and bug fixes.
- **Ventilation:** Ensure the unit's ventilation openings are not blocked to prevent overheating.
- **Environmental Conditions:** Protect the unit from extreme temperatures, direct sunlight, and excessive humidity.

8. TROUBLESHOOTING

This section addresses common issues you might encounter and provides potential solutions.

Problem	Possible Cause / Solution
Unit does not power on.	Check power connections (B+, ACC, GND). Verify car fuse. Ensure proper voltage (12V).
No sound.	Check speaker wiring. Ensure volume is not muted or too low. Verify amplifier connections if applicable. Check sound settings.
Touchscreen unresponsive or inaccurate.	Restart the unit. Ensure the screen is clean and free of debris.
GPS signal weak or inaccurate.	Ensure GPS antenna is properly connected and has a clear view of the sky. Move the antenna if necessary.
Bluetooth connection issues.	Ensure Bluetooth is enabled on both devices. Unpair and re-pair the devices. Clear Bluetooth cache on your phone.
Mirror-Link not working.	Ensure "Easy Connection" app is installed on both devices. Verify USB/Wi-Fi and Bluetooth connections (for Android). Check phone settings for screen mirroring permissions.
Backup camera not displaying.	Check camera wiring (especially the "BACK" trigger wire). Ensure camera is receiving power.
System is slow or freezes.	Close unnecessary background applications. Clear system cache. Perform a factory reset if issues persist (<i>Note: This will erase all user data</i>).

If the problem persists after trying these solutions, please contact ANKEWAY customer support for further assistance.

9. WARRANTY & SUPPORT

ANKEWAY is committed to providing high-quality products and customer satisfaction. For any questions regarding compatibility, wiring, installation, setup, or use of your car stereo, please refer to the contact information below.

It is advised to contact ANKEWAY support through the user manual for specific inquiries.

ANKEWAY Customer Service:

Email: ankeway@qq.com

YouTube Channel: Search for "ANKEWAY Car Radio" or visit <https://bit.ly/32D12cH> for video tutorials.

Please note: Warranty details may vary. Refer to your purchase documentation or contact customer service for specific warranty terms and conditions.