

ExpertPower YTX9-BS

ExpertPower YTX9-BS 12V 9Ah Sealed Lead-Acid Battery Instruction Manual

Model: YTX9-BS



1. INTRODUCTION

This instruction manual provides essential information for the safe and effective use of your ExpertPower YTX9-BS 12V 9Ah Sealed Lead-Acid (SLA) battery. Please read this manual thoroughly before installation and operation to ensure proper handling and to maximize battery life and performance. This battery is designed as a replacement for various powersports applications requiring a YTX9-BS type battery.

2. SAFETY INFORMATION

WARNING: Improper handling of batteries can lead to serious injury or damage. Always follow these safety guidelines.

- Always wear appropriate personal protective equipment (PPE), including safety glasses and gloves, when handling batteries.
- Keep batteries away from open flames, sparks, and other ignition sources. Batteries can produce explosive gases.
- Do not short-circuit battery terminals. This can cause severe burns, fire, or explosion.
- Do not disassemble, puncture, or modify the battery.
- If battery acid comes into contact with skin or eyes, flush immediately with plenty of water and seek medical attention.
- Keep batteries out of reach of children.
- Ensure proper ventilation when charging or operating batteries in enclosed spaces.
- Dispose of batteries responsibly according to local regulations. Do not dispose of in household waste.

3. SETUP AND INSTALLATION

The ExpertPower YTX9-BS battery is a factory-activated, sealed lead-acid (SLA) battery, meaning it is ready for

immediate use upon receipt. No initial acid filling or charging is typically required.

1. **Initial Inspection:** Carefully inspect the battery for any signs of physical damage, leaks, or corrosion. Do not install a damaged battery.
2. **Preparation:** Ensure the battery compartment of your vehicle or device is clean and free of debris.
3. **Removal of Old Battery:**
 - Turn off the vehicle or device and remove the ignition key.
 - Disconnect the negative (-) terminal first, then the positive (+) terminal.
 - Carefully remove the old battery.
4. **Installation of New Battery:**
 - Place the new ExpertPower YTX9-BS battery securely in the battery compartment.
 - Connect the positive (+) terminal first, then the negative (-) terminal. Ensure connections are tight and secure.
 - Apply a thin layer of dielectric grease or anti-corrosion spray to the terminals to prevent corrosion.
5. **Verify Connections:** Double-check all connections to ensure they are correct and secure before operating the vehicle or device.



Figure 1: ExpertPower YTX9-BS 12V 9Ah Sealed Lead-Acid Battery. This image shows the overall appearance of the battery with its positive and negative terminals clearly visible.

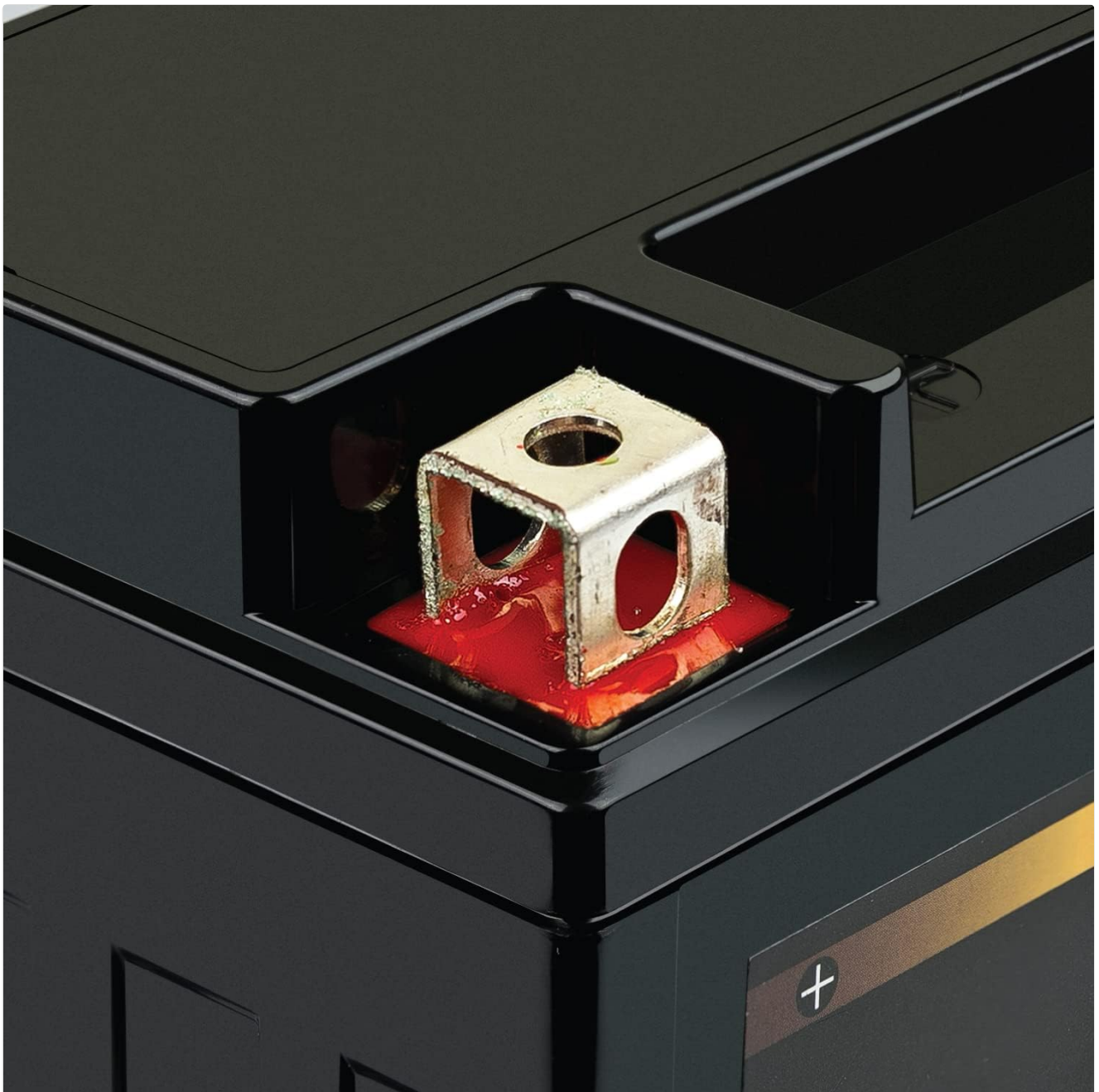


Figure 2: Close-up view of a battery terminal. This image highlights the robust construction of the battery terminals, designed for secure connections.

4. OPERATING GUIDELINES

Once properly installed, the ExpertPower YTX9-BS battery operates as a standard 12V power source for your application. As a sealed lead-acid battery, it is designed for maintenance-free operation under normal conditions.

- Ensure your vehicle's charging system is functioning correctly to prevent overcharging or undercharging, which can shorten battery life.
- Avoid deep discharges. While SLA batteries are robust, repeatedly discharging them below 10.5V can cause permanent damage.
- If the battery is used in a seasonal vehicle, refer to the "Maintenance and Storage" section for proper off-season care.

5. MAINTENANCE AND STORAGE

Although the ExpertPower YTX9-BS is a maintenance-free battery, following these guidelines will help extend its lifespan and ensure optimal performance.

- **Regular Inspection:** Periodically check the battery terminals for corrosion and ensure connections remain tight. Clean any corrosion with a wire brush and a baking soda/water solution, then rinse with clean water and dry thoroughly.
- **Cleaning:** Keep the battery top clean and dry to prevent current leakage and self-discharge.
- **Charging:** If the battery is not in regular use, or if the vehicle is stored for an extended period, use a smart charger designed for SLA batteries to maintain a full charge. A trickle charger or battery maintainer is recommended for long-term storage.
- **Storage:**
 - Store the battery in a cool, dry place, away from direct sunlight and extreme temperatures.
 - Ensure the battery is fully charged before storage.
 - Check the voltage every 1-3 months and recharge if it drops below 12.5V.



Figure 3: ExpertPower YTX9-BS battery emphasizing its VRLA AGM, High Performance, Factory-Activated, and Shock Resistant features. This image illustrates the key technological advantages of the battery.

6. TROUBLESHOOTING

If you encounter issues with your ExpertPower YTX9-BS battery, consider the following common problems and solutions:

Problem	Possible Cause	Solution
Battery not holding charge	Faulty charging system in vehicle Parasitic drain Battery sulfation due to deep discharge or prolonged storage without charge	Test vehicle's charging system (alternator/regulator). Check for accessories drawing power when the vehicle is off. Attempt to recondition with a specialized charger, or replace battery if severely damaged.
Engine cranks slowly or not at all	Low battery voltage Corroded or loose terminals Cold weather affecting battery performance	Charge the battery. Clean and tighten terminals. Ensure battery is fully charged; consider a battery warmer in extreme cold.
Battery appears swollen or leaking	Overcharging Internal damage	Immediately disconnect and replace the battery. Do not attempt to use. Have the vehicle's charging system inspected.

If troubleshooting steps do not resolve the issue, please contact ExpertPower customer support.

7. SPECIFICATIONS

The following table details the technical specifications for the ExpertPower YTX9-BS battery:

Feature	Specification
Model	YTX9-BS
Voltage	12 Volts
Capacity	9 Ah (Ampere-hours)
Technology	Sealed Lead-Acid (SLA), VRLA AGM (Valve Regulated Lead Acid Absorbent Glass Mat)
Dimensions (L x W x H)	5.9 x 3.4 x 4.2 inches (15.0 x 8.7 x 10.7 cm)
Weight	6.45 pounds (2.93 kg)
Manufacturer Part Number	YTX9-BS-1-6
UPC	840140924060

Tech Specifications

MODEL

YTX9-BS

12 Volts 9Ah



6.46 lbs

2.93 kg



12 Volt



9 AH

10 HR



Figure 4: Graphic illustrating key technical specifications of the ExpertPower YTX9-BS battery, including weight, voltage, and capacity.

Size & Dimensions

12V 9AH SLA Battery

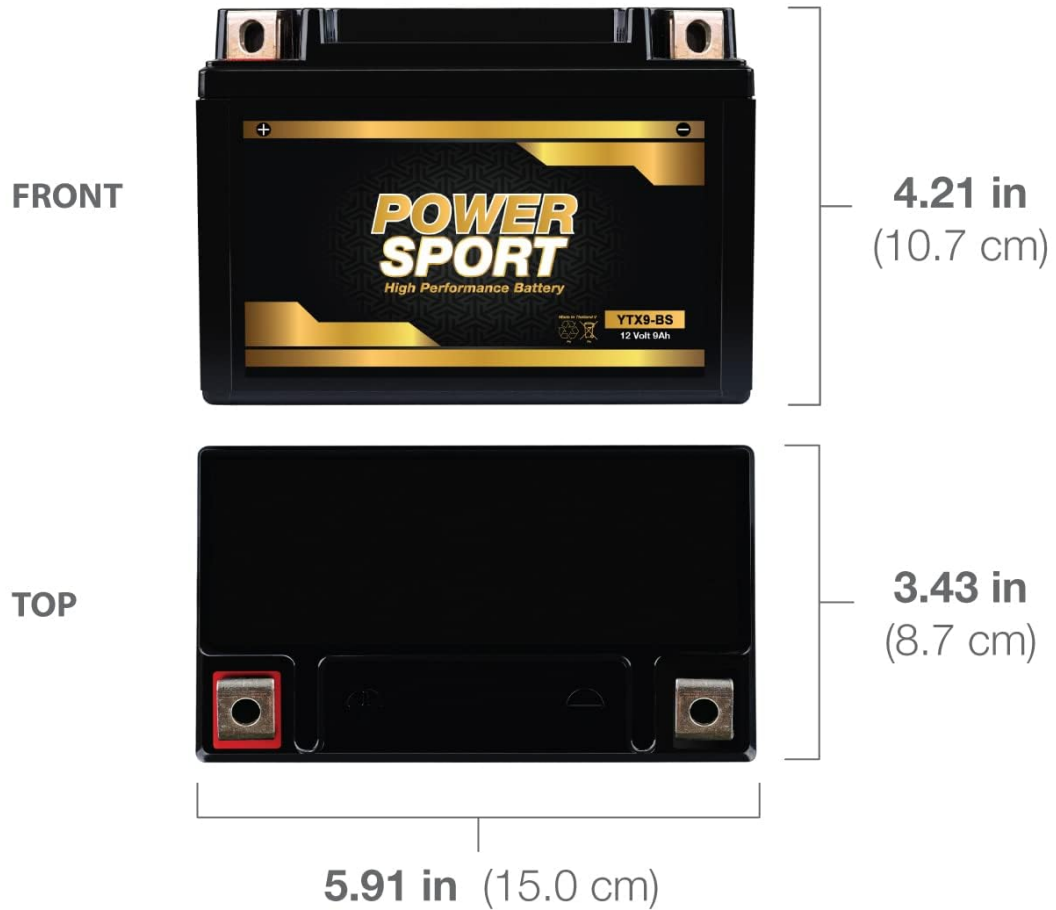


Figure 5: Graphic detailing the size and dimensions of the ExpertPower YTX9-BS 12V 9Ah SLA battery, showing front and top views with measurements.

Proven Quality. Tested Standards.



Quality

ISO 14001: 2015



Health & Safety

ISO 18001:2004



Environmental

ISO 9001:2015



Figure 6: Graphic showcasing ExpertPower's commitment to quality and tested standards, including ISO certifications and UL recognition.

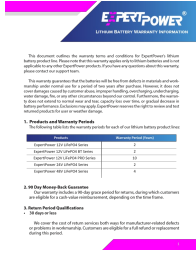
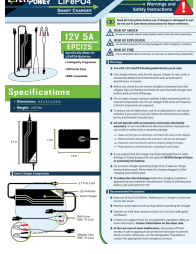


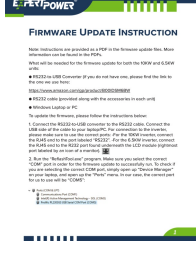
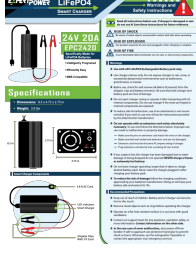
8. WARRANTY AND SUPPORT

ExpertPower stands behind the quality of its products. For specific warranty details regarding your YTX9-BS battery, please refer to the warranty information provided at the time of purchase or visit the official ExpertPower website. If you require technical assistance, have questions about installation, or need to report an issue, please contact ExpertPower customer support:

- **Online Support:** Visit the [ExpertPower Store on Amazon](#) or the official ExpertPower website.
- **Seller:** ExpertPower Direct (via Amazon)



Related Documents - YTX9-BS

	<p>ExpertPower Lithium Battery Warranty Information and Terms</p> <p>Detailed warranty terms and conditions for ExpertPower's lithium battery product line, including warranty periods, return policies, RMA guidelines, and exclusions.</p>
	<p>EXPERTPOWER EPC125 12V 5A LiFePO4 Smart Battery Charger: User Guide & Safety Instructions</p> <p>Learn how to safely and effectively use the EXPERTPOWER EPC125 12V 5A LiFePO4 Smart Battery Charger. This guide provides essential safety instructions, operating procedures, specifications, and troubleshooting tips for optimal battery charging.</p>
	<p>ExpertPower 12V Inverter Charger IVOCH2KW/IVOCH3KW User Manual</p> <p>Comprehensive user manual for the ExpertPower 12V Pure Sine Wave Inverter Charger (Models IVOCH2KW, IVOCH3KW), covering installation, operation, AC/DC modes, wiring, alarms, and troubleshooting.</p>
	<p>ExpertPower IVOCH2KW/IVOCH3KW 12V Pure Sine Wave Inverter Charger User Manual</p> <p>Comprehensive user manual for ExpertPower's IVOCH2KW and IVOCH3KW 12V Pure Sine Wave Inverter Chargers. Covers installation, operation, AC/DC modes, wiring, safety, and troubleshooting for RVs and solar power systems.</p>
	<p>ExpertPower 10KW and 6.5KW Inverter Firmware Update Instructions</p> <p>A comprehensive guide to updating the firmware on ExpertPower 10KW and 6.5KW inverters. Learn how to connect your PC, select the correct COM port, and initiate the update process using the ReflashTool.exe.</p>
	<p>ExpertPower 24V 20A LiFePO4 Smart Charger Manual and Safety Instructions</p> <p>Comprehensive guide to connecting, operating, and maintaining the ExpertPower 24V 20A LiFePO4 Smart Charger. Includes safety warnings, specifications, and troubleshooting tips.</p>