



[Manuals.plus](#) /

› [Funkey](#) /

› FunKey DP-88 II Digital Piano Instruction Manual

Funkey DP-88 II

FunKey DP-88 II Digital Piano Instruction Manual

Model: DP-88 II

INTRODUCTION

Thank you for choosing the FunKey DP-88 II Digital Piano. This manual provides essential information for the safe and efficient use of your instrument. Please read it thoroughly before operating the piano and keep it for future reference. The FunKey DP-88 II is designed for beginners and experienced players alike, offering 88 hammer-action keys with touch dynamics, a wide range of sounds, and comprehensive accompaniment features.

DP-88 II – Digitalpiano für Einsteiger



Figure 1: The FunKey DP-88 II Digital Piano.

PACKAGE CONTENTS

Ensure all the following items are present in your package:

- FunKey DP-88 II Digital Piano
- Economy Keyboard Bench
- Headphones
- Piano Method Book for Beginners
- Power Adapter
- User Manual (this document)

Im Set enthalten



3-fach höhenverstellbar

Einfach zusammenlegbar
Edler Kunstlederbezug



Hochwertiger, dynamischer Kopfhörer

Gute Außenschallisolierung



Klavierschule für Einsteiger

15 coole Songs von Klassik über Jazz
bis Rock zum sofortigen Mitspielen



FUNKEY

Figure 2: Included components of the FunKey DP-88 II digital piano set.

SETUP

1. Assembly

The FunKey DP-88 II digital piano is designed for quick and straightforward assembly. Follow the instructions provided in the separate assembly guide (if included) or the visual cues on the packaging. Ensure all components are securely fastened before use.

Kompakt, stabil & schnell aufgebaut



Figure 3: The FunKey DP-88 II digital piano is compact and designed for quick assembly.

2. Connecting Power

1. Connect the power adapter to the DC IN jack on the rear panel of the piano.
2. Plug the power adapter into a suitable wall outlet.

3. Connecting Pedals and Headphones

- Connect the pedal unit cable to the designated pedal input on the piano.
- For private practice, plug the included headphones into the 6.35 mm headphone jack.

Vielfältige Anschlüsse & smarte Konnektivität



Figure 4: Rear panel connections for the FunKey DP-88 II digital piano.

OPERATING INSTRUCTIONS

1. Power On/Off

Press the **POWER** button located on the control panel to turn the piano on or off. The LCD display will illuminate upon power-on.

Intuitive Bedienung & einfache Navigation



Figure 5: Intuitive control panel with LCD display for easy navigation.

2. Adjusting Volume

Use the **MASTER VOLUME** knob or buttons to adjust the overall output volume of the piano. This affects both the built-in speakers and headphone output.



Figure 6: Integrated stereo speakers and three pedals for expressive play.

3. Selecting Sounds and Rhythms

- The DP-88 II features 360 different sounds. Use the **SOUND** selection buttons to browse and choose your desired instrument voice.
- Access 160 accompaniment styles using the **RHYTHM** section. These provide a full band backing for your playing.

4. Learning Functions

The piano includes a learning function with three difficulty levels for both hands, displaying notes directly on the LCD. It also features 80 inspiring demo songs to aid your musical progress.

- **Dual Function:** Play two sounds simultaneously, such as piano and strings.
- **Split Function:** Divide the keyboard into two sections, allowing different sounds for the left and right hands (e.g., bass in the left, melody in the right).

Kreativ lernen mit vielen Funktionen

Dual & Split-Funktion

Spiele zwei Sounds gleichzeitig – z.B. Klavier und Streicher – oder teile die Tastatur flexibel in Bass und Melodie.

Lernmodus & Demo-Songs

Mit drei Schwierigkeitsstufen für beide Hände, direkt angezeigten Noten auf dem Display und 80 inspirierenden Demo-Songs unterstützt der Lernmodus deinen musikalischen Fortschritt.

Umfangreiche Begleitautomatik

Die integrierte Begleitautomatik mit 160 Styles von Rock bis Schlager ermöglicht Einsteigern und Kindern spielerisches Lernen mit schnellen Erfolgserlebnissen.

FUNKEY

Figure 7: Creative learning features of the FunKey DP-88 II.

5. Metronome, Record & Playback, MP3 Player

- **Metronome:** Use the built-in metronome for timing practice.
- **Record & Playback:** Capture your performances and listen back to them.
- **MP3 Player:** Play along with your favorite songs via the integrated MP3 player.

Kreativ aufnehmen, exakt üben, direkt mitspielen



Metronom



Record & Playback



MP3-Player

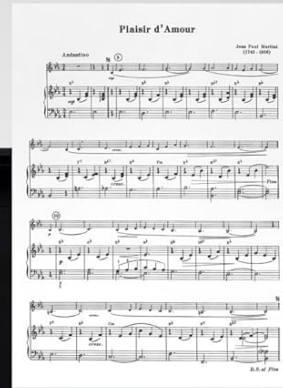


Figure 8: Features for creative recording, precise practice, and playing along.

6. Effects (Reverb & Chorus)

Enhance your sound with built-in digital effects:

- **Reverb:** Adds a spacious, echoing effect, simulating different acoustic environments.
- **Chorus:** Creates a richer, thicker sound by slightly detuning and delaying the original signal.

MAINTENANCE

1. Cleaning

- Always disconnect the power adapter before cleaning.
- Use a soft, dry cloth to wipe the surface of the piano.
- For stubborn dirt, slightly dampen the cloth with water and a mild, non-abrasive cleaner. Avoid excessive moisture.
- Do not use chemical solvents, alcohol, or abrasive cleaners, as these can damage the finish.

2. Storage and Care

- Store the piano in a cool, dry place away from direct sunlight, extreme temperatures, and high humidity.
- Avoid placing heavy objects on the keyboard or control panel.
- Protect the keys from dust using a keyboard cover when not in use.

TROUBLESHOOTING

Problem	Possible Cause	Solution
No power	Power adapter not connected; power outlet not working.	Ensure power adapter is securely connected to the piano and a working power outlet.
No sound	Volume too low; headphones connected; incorrect sound selected.	Increase MASTER VOLUME. Disconnect headphones if using speakers. Select a different sound.
Keys not responding	Piano in a specific mode (e.g., demo mode); internal error.	Restart the piano. If the issue persists, contact customer support.
Distorted sound	Volume too high; faulty connection.	Lower the MASTER VOLUME. Check all cable connections.

SPECIFICATIONS

Feature	Detail
Keys	88 Hammer-action keys with touch dynamics
Sounds	360
Rhythm Accompaniments	160 styles
Polyphony	128-note
Demo Songs	80
Learning Function	Yes (3 difficulty levels, notes on LCD)
Effects	Reverb, Chorus
Metronome	Yes
Record & Playback	Yes
MP3 Player	Yes
Speakers	Integrated stereo (2x 15W)
Connections	Power adapter, USB to Device, 6.35 mm Jack output, Foot pedal, MIDI In/Out, USB to Host, 6.35 mm Headphone Jack
Dimensions (WxDxH)	135 x 39 x 77.5 cm (53.1 x 15.4 x 30.5 inches)

Feature	Detail
Weight	29.4 kg (64.8 lbs)
Color	Black

WARRANTY AND SUPPORT

Warranty Information

Please refer to the warranty card included with your product or contact your retailer for detailed warranty information. Keep your proof of purchase for any warranty claims.

Customer Support

For technical assistance, spare parts, or service inquiries, please contact the retailer where you purchased the FunKey DP-88 II Digital Piano. You may also visit the official FunKey website for additional resources.

ADDITIONAL RESOURCES

Learning Aid Video: Piano Note Strips



Video 9: This video demonstrates the installation and use of piano note strips, which can be a helpful visual aid for beginners learning to identify notes on the keyboard. This complements the included piano method book.

