

SONOFF Sonoff Micro USB Smart Adaptor

SONOFF Micro USB Smart WiFi Adaptor

Model: Sonoff Micro USB Smart Adaptor

Your Smart Home Choice

PRODUCT OVERVIEW

The SONOFF Micro USB Smart WiFi Adaptor transforms ordinary USB devices into smart ones, allowing you to control them remotely and automate their functions. This compact device is designed for convenience and integration into your smart home ecosystem.



Image: The SONOFF Micro USB Smart WiFi Adaptor shown alongside its retail packaging, highlighting its compact size and branding.

Key Features

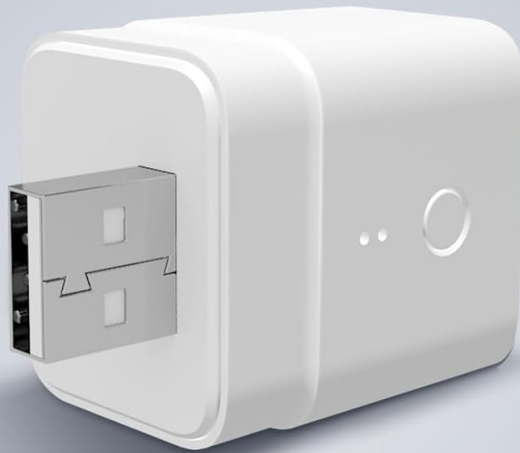
- **APP Remote Control:** Control your USB devices from anywhere using the eWeLink APP on your iOS or Android smartphone.
- **Timing Schedule:** Automate your USB devices by setting specific on/off times, perfect for LED light strips, fans, or water pumps.
- **Hands-free Voice Control:** Compatible with Amazon Alexa and Google Home for convenient voice

commands.

- **Smart Scene & Sync Status:** Create smart scenes to trigger other SONOFF devices or group multiple devices. Monitor the real-time status of connected devices in the eWeLink APP.
- **Overcharge Protection:** Schedule devices to stop charging automatically once fully charged, prolonging battery life and ensuring safety.

USB Smart Adaptor

Automate your dumb USB devices



Remote Control



Voice Control



Timing Schedule



Smart Scene



Share Control



Sync Status



LAN Control



Power on State

Image: A visual representation of the SONOFF Micro USB Smart Adaptor surrounded by icons illustrating its core functionalities: Remote Control, Voice Control, Timing Schedule, Smart Scene, Share Control, Sync Status, LAN Control, and Power on State.

SETUP GUIDE

Important Notes Before Setup

- The SONOFF Micro requires a **secured 2.4GHz WiFi network connection**. It is not compatible with 5GHz WiFi networks.
- This device is for **power supply only** and does not support data transmission.

eWeLink App Installation

To control your SONOFF Micro, you need to download and install the eWeLink App on your smartphone.

1. Scan the QR code on the product packaging or visit <http://app.coolkit.cc/dl.html> to download the eWeLink App.
2. Ensure your eWeLink Smart Home App version is updated to 4.31.0 or above for optimal performance.



Image: The side of the SONOFF Micro packaging displaying the eWeLink App logo, Google Play and App Store icons, and a QR code for easy download.

Device Pairing

Follow these steps to pair your SONOFF Micro with the eWeLink App:

1. Plug the SONOFF Micro into a USB power source. The device will enter pairing mode for approximately 2-3 minutes.
2. Open the eWeLink App.
3. From the 'Home' screen, tap the '+' icon (top right) to 'Add Device'.
4. Select '2.4GHz WiFi Only' and choose your 2.4GHz WiFi network. Enter your WiFi password.
5. The app will search for and add the device. If pairing fails, ensure your WiFi signal is strong and try again.



Image: A sequence of screenshots from the eWeLink App demonstrating the device pairing process, including adding a device, selecting 2.4GHz WiFi, entering the password, and the device discovery screen.

OPERATING INSTRUCTIONS

Remote Control via eWeLink App

Once paired, you can turn your connected USB devices on or off from anywhere using the eWeLink App.



Image: An illustration showing the SONOFF Micro connected to a USB light, which is then controlled remotely via the eWeLink app on a smartphone, demonstrating the convenience of remote operation.

Timing Schedules

Set up schedules to automatically turn your USB devices on or off at specific times. This feature is ideal for automating daily routines.

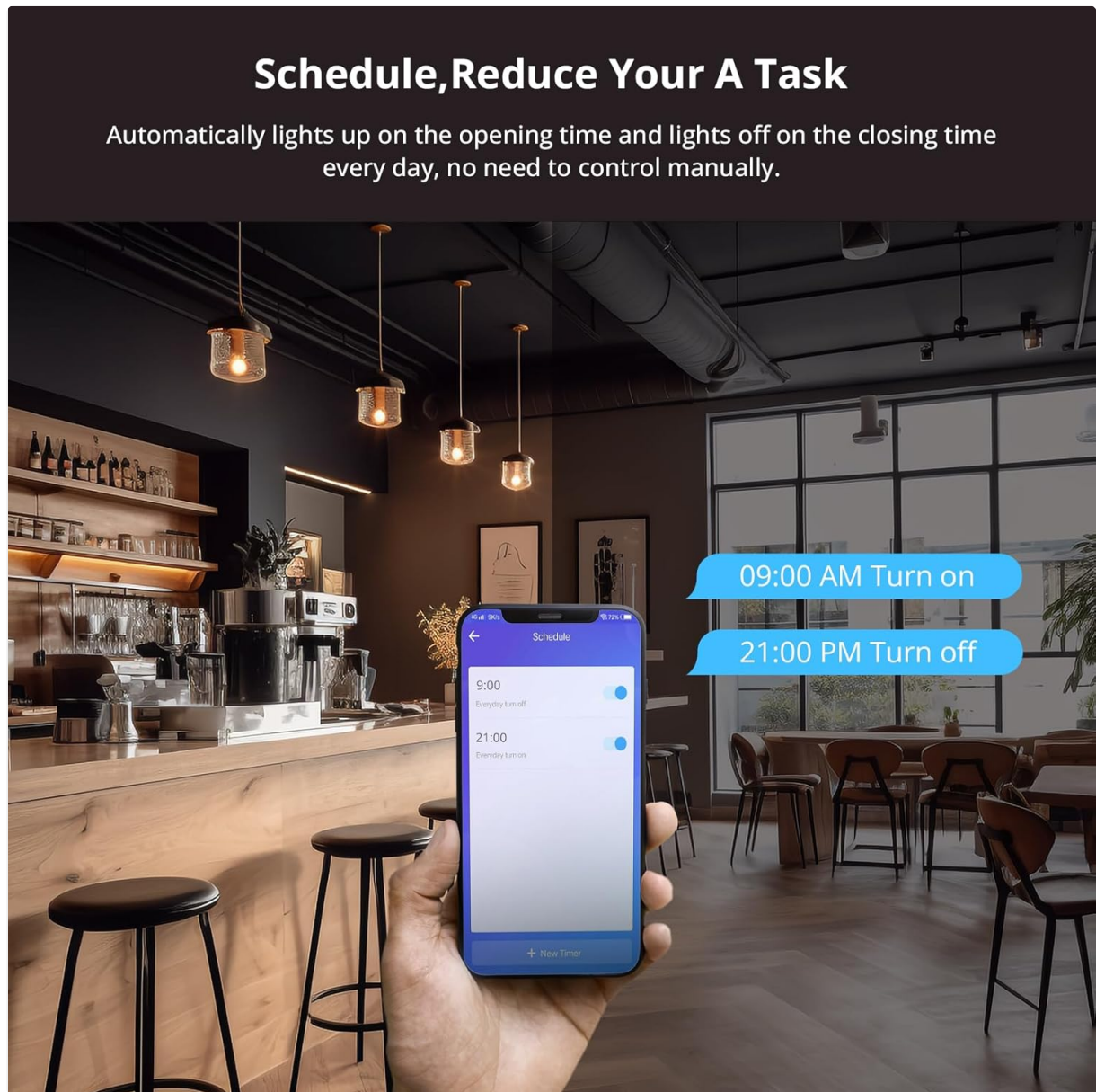


Image: A hand holding a smartphone displaying the eWeLink app's scheduling interface, with examples of lights turning on at 9:00 AM and off at 21:00 PM, illustrating automated control.

Voice Control

Integrate your SONOFF Micro with Amazon Alexa or Google Home for convenient voice control of your connected USB devices.

Turn Voice into Action

Don't wanna get out of bed to turn off the lamp? Try to do with your voice.



"Alexa, turn off the lamp."

"Okay."



Image: A scene depicting a person using voice commands with an Amazon Echo device to control a lamp connected via the SONOFF Micro, demonstrating hands-free operation with Alexa and Google Home compatibility.

Smart Scenes and Overcharge Protection

Create custom smart scenes within the eWeLink App to automate actions based on various conditions or trigger other smart devices. Utilize the overcharge protection feature to schedule devices to stop charging once they reach 100%, preventing battery degradation.

No Worries for Overcharge

Schedule a time for devices to ensure stop charging automatically after charged to 100%, keeping devices safe and avoid aging faster.

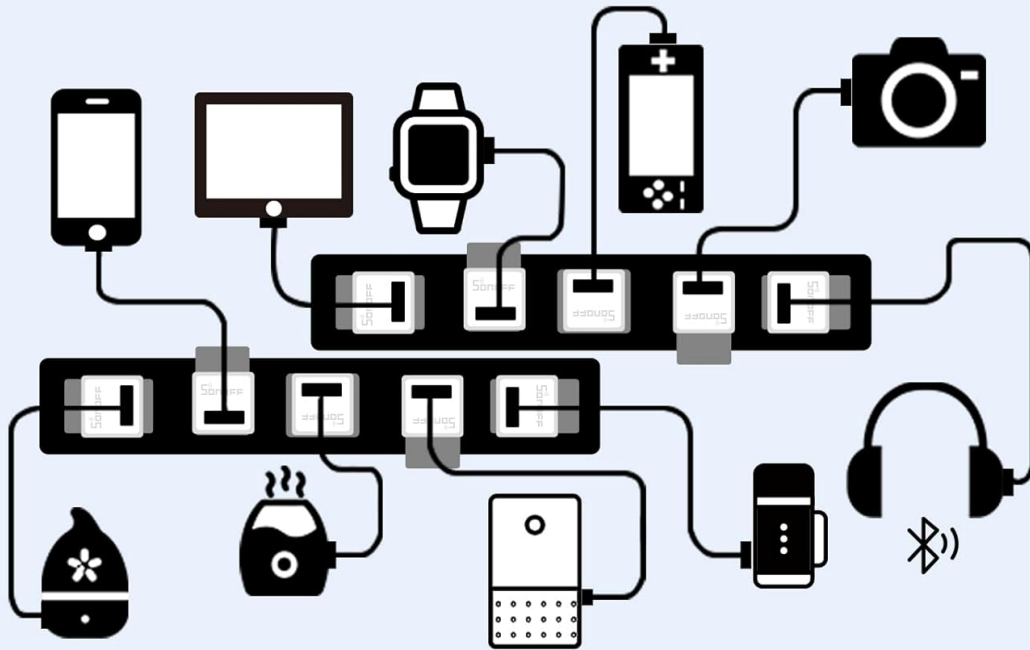


Image: A schematic diagram showing multiple USB devices (smartphone, camera, smartwatch, headphones, etc.) connected to power sources, with the SONOFF Micro integrated to manage charging and prevent overcharge, ensuring device longevity.

Versatile Usage

The SONOFF Micro is compatible with a wide range of 5V USB-powered devices, making it highly versatile for various applications.

Usage that Goes Beyond Your Imagination



Image: A central image of the SONOFF Micro surrounded by various USB-powered devices such as desk lamps, fans, projectors, flashlights, LED strips, and humidifiers, illustrating the broad range of applications for the smart adaptor.

Built for "Easy to Go"

Ideal for all your USB power adaptors and USB cable types.

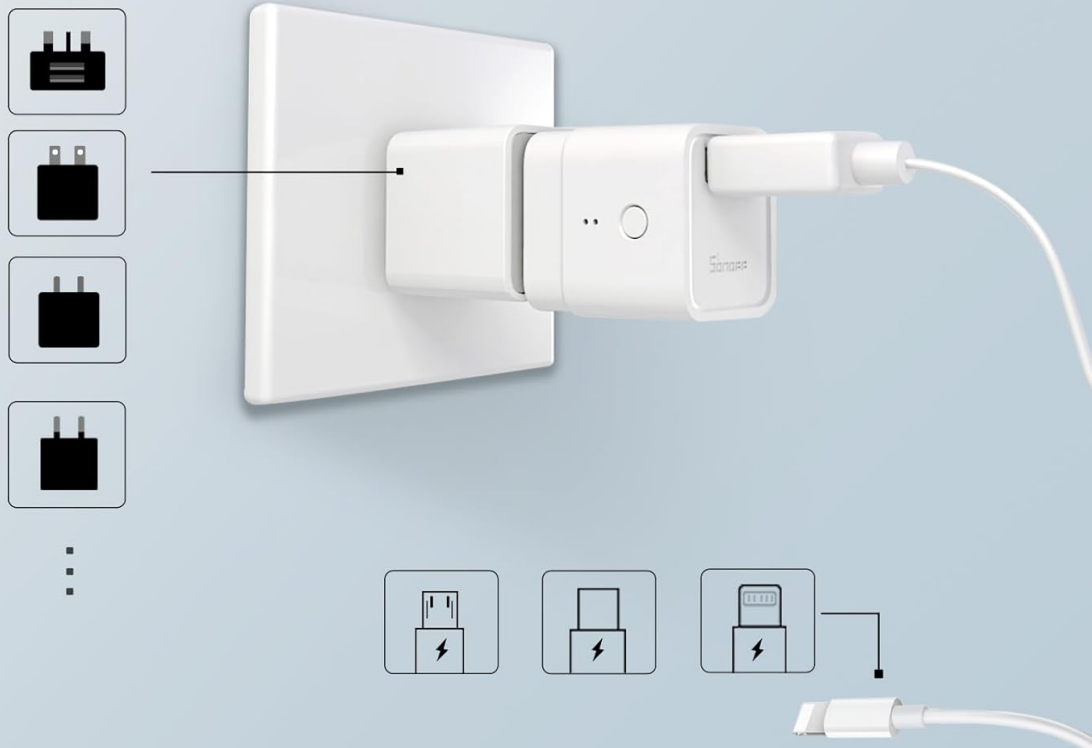


Image: The SONOFF Micro plugged into a wall outlet, with illustrations of different regional power adapters and various USB cable types (USB-A, USB-C, Lightning), emphasizing its universal compatibility with existing USB power solutions.

MAINTENANCE

To ensure the longevity and optimal performance of your SONOFF Micro USB Smart WiFi Adaptor, follow these simple maintenance guidelines:

- **Keep Dry:** Avoid exposing the device to moisture or liquids.
- **Clean Gently:** Use a soft, dry cloth to clean the exterior of the device. Do not use harsh chemicals or abrasive cleaners.
- **Stable Power Supply:** Ensure the USB power source provides a stable 5V output. Unstable power can affect performance.
- **Optimal WiFi Environment:** Maintain a stable 2.4GHz WiFi signal in the area where the device is used.

TROUBLESHOOTING

If you encounter issues with your SONOFF Micro, refer to the following common problems and solutions:

Problem	Possible Cause / Solution
Device fails to pair with eWeLink App.	Ensure your WiFi network is 2.4GHz, not 5GHz. Check WiFi password for accuracy. Ensure the device is in pairing mode (flashing indicator light). Move the device closer to your WiFi router. Restart the pairing process.
Device frequently disconnects from WiFi.	Weak 2.4GHz WiFi signal. Relocate the device or improve router coverage. Too many devices on your WiFi network. Consider optimizing your network or using a more robust router. Interference from other electronic devices.
Device does not respond to commands.	Check if the device is powered on and connected to WiFi. Verify your internet connection. Ensure the eWeLink App is updated to the latest version. For voice control, ensure proper linking with Alexa/Google Home and correct command syntax.
Device does not function after a power outage.	The device should automatically reconnect. If not, try re-adding the device through the eWeLink App (it may retain settings). Ensure stable power has been restored.
Connected USB device is not receiving sufficient power.	Ensure the USB power adapter connected to the SONOFF Micro provides adequate voltage (5V) and current for the connected device. Avoid using low-quality power banks or adapters that may not provide stable output.

SPECIFICATIONS

Attribute	Detail
Model Number	Sonoff Micro USB Smart Adaptor
Product Dimensions	1.22 x 1.04 x 1.3 inches (31 x 26.5 x 33 mm)
Item Weight	0.638 ounces (18.1 Grams)
Input	5V : 2.5A
Output	5V : 2.5A
Wi-Fi Standard	IEEE 802.11 b/g/n 2.4GHz
Color	White
Material	PC V0

Attribute	Detail
Hardware Interface	Micro USB 2.0 Type B
Compatible Devices	Desktop, Smartphone (via app)
Manufacturer	SONOFF (Shenzhen Sonoff Technologies Co., Ltd.)
UPC	782910693960

WARRANTY AND SUPPORT



For product support, technical assistance, or warranty inquiries, please refer to the official SONOFF resources:

- **Official Website:** Visit sonoff.tech for comprehensive product information, FAQs, and support documentation.
- **Manufacturer:** Shenzhen Sonoff Technologies Co., Ltd.
- **EU Representative:** EUREPGmbH, Unterlettenweg 1a, 85051 Ingolstadt, Germany.

Please retain your proof of purchase for any warranty claims.

© 2024 SONOFF. All rights reserved.

Related Documents

	<p>SONOFF Micro USB Smart Adaptor: Operation Instructions and Specifications</p> <p>Comprehensive guide to operating the SONOFF Micro USB smart adaptor, including setup, features, specifications, and troubleshooting. Learn how to connect your USB devices to the eWeLink app for remote control, scheduling, and voice commands.</p>
	<p>SONOFF Micro USB Smart Adaptor - Operation, Specifications, and Troubleshooting</p> <p>Comprehensive guide for the SONOFF Micro USB smart adaptor, covering setup instructions, technical specifications, features, Wi-Fi LED status, and common troubleshooting tips.</p>



[SONOFF ZBMicro Zigbee USB Smart Adaptor User Manual](#)

User manual for the SONOFF ZBMicro Zigbee USB Smart Adaptor, detailing its features, specifications, setup, and compliance information.



[Sonoff WiFi Wireless Switch and Slampher Installation and E-WeLink App Guide](#)

A comprehensive guide detailing the installation and setup of Sonoff WiFi wireless switches and Slampher smart devices. It covers wiring, pairing with 433MHz RF remotes, and using the E-WeLink mobile application for smart home control, including managing devices, scenes, and groups.