

## **TIMEMORE C2 Manual**

# **TIMEMORE Chestnut C2 Manual Coffee Grinder**

## **INSTRUCTION MANUAL**

### **1. Introduction**

Thank you for choosing the TIMEMORE Chestnut C2 Manual Coffee Grinder. This manual provides essential information for the proper setup, operation, and maintenance of your new coffee grinder. Designed for coffee enthusiasts, the C2 grinder features high-quality components to ensure a consistent and enjoyable grinding experience.

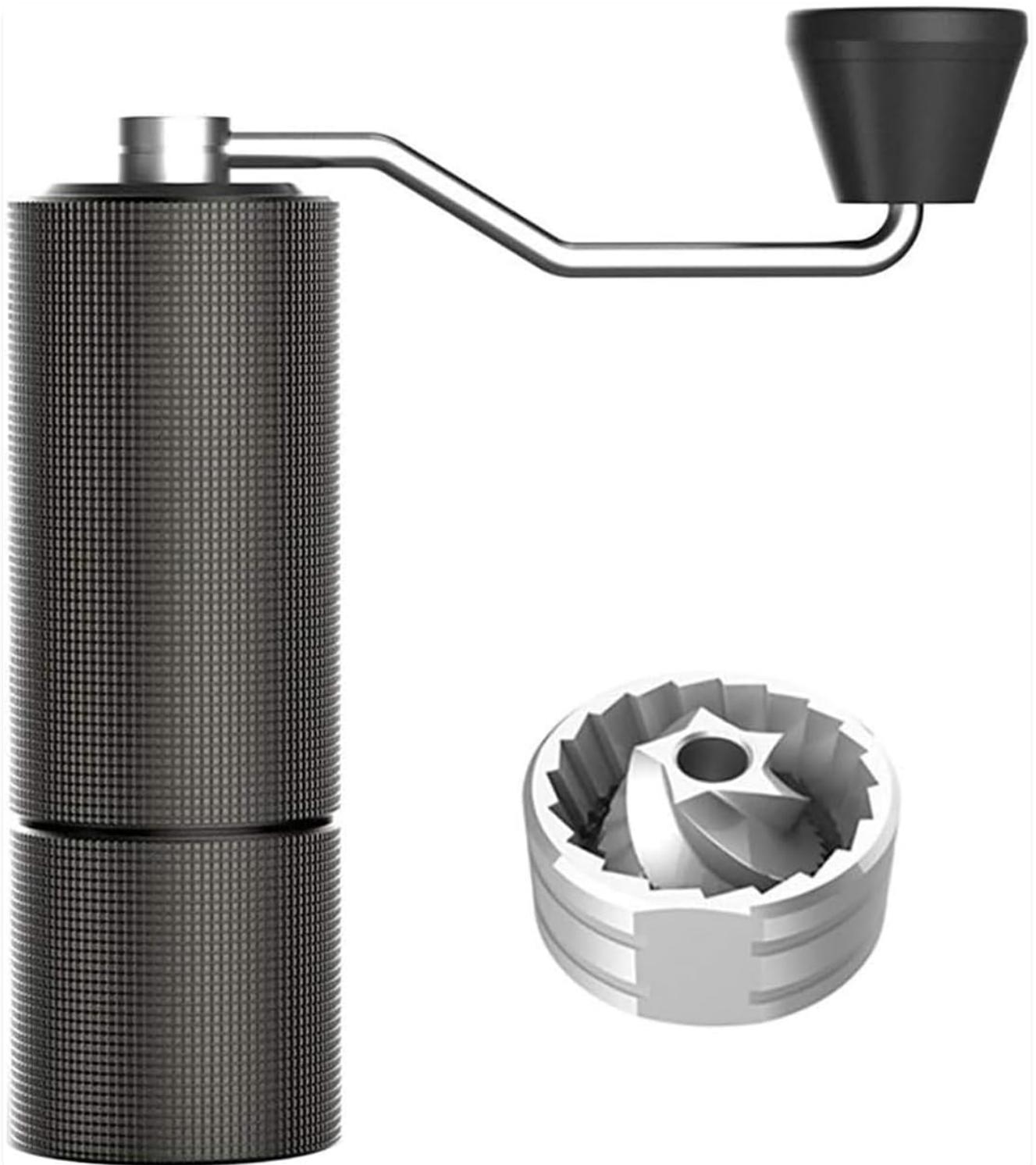


Figure 1: TIMEMORE Chestnut C2 Manual Coffee Grinder

Key features of your TIMEMORE Chestnut C2 grinder include:

- **High-Quality 420 Stainless Steel Burrs:** Formed by five-axis CNC cutting, these burrs offer a hardness of 55-58HRC for efficient coffee bean grinding.
- **Dual Bearing Center Axis Positioning:** Ensures even grinding for consistent particle size.
- **Internal Adjustable Grinding Degree:** Easily adjust coarseness for various brewing methods like pour-over, Moka pot, and French press.
- **Compact and Portable Design:** Weighing 430g, it's ideal for home use, outdoor adventures, or travel.
- **Easy to Disassemble and Clean:** Designed for tool-free disassembly and simple cleaning with the included brush.

## 2. Product Components

Your TIMEMORE Chestnut C2 grinder package includes the following items:

- TIMEMORE C2 Grinder (x1)
- Cleaning Brush (x1)
- Cloth Bag (x1)
- Product Manual (x1)

Familiarize yourself with the main parts of the grinder:



Figure 2: Stainless Steel Conical Burrs

The heart of the grinder, responsible for precise and consistent coffee particle size.



Figure 3: Internal Grind Adjustment Dial

Allows for easy selection of grind coarseness by turning the dial.



**ANTI-SLIP DESIGN**  
FOR BETTER GRIP

Figure 4: Anti-Slip Body Design

The textured surface provides a firm and comfortable grip during operation.



PAUSE A MOMENT  
ENJOY LIFE

Figure 5: Disassembled Components for Cleaning

The grinder can be easily taken apart for cleaning, with a brush provided.

### 3. Setup

Before first use, ensure all components are clean and dry. The grinder is designed for easy assembly.

1. **Unpack:** Carefully remove all items from the packaging.
2. **Initial Cleaning:** Use the provided brush to remove any dust or debris from the burrs and internal components. *Do not rinse with water.*
3. **Assemble:** Ensure the grinding chamber and collection container are securely screwed together. Attach the handle to the top shaft.



## EASY TO CLEAN

Brush is included in the package



Figure 6: General Usage Steps Overview

This diagram illustrates the basic sequence of operations for the grinder.

## 4. Operating Instructions

Follow these steps for optimal grinding performance:

### 1. Adjust Grind Size:

Locate the internal grinding degree adjustment knob. Turn the knob clockwise for a finer grind and counter-clockwise for a coarser grind. The grinder offers precise click adjustments.

#### Recommended Grind Settings (Approximate Clicks from Zero Point)

Brew Method	Recommended Clicks	Grind Type
Espresso	10-14 Clicks	Fine

Brew Method	Recommended Clicks	Grind Type
Pour Over Coffee	18-24 Clicks	Medium-Coarse
French Press Coffee	25-27 Clicks	Coarse

2. **Load Coffee Beans:**

Open the lid at the top of the grinder. Pour whole coffee beans into the grinding chamber. The maximum capacity is approximately 25g.

3. **Grind:**

Hold the grinder firmly with one hand and rotate the handle clockwise with the other. Continue grinding until all beans have passed through the burrs and collected in the bottom container.

4. **Retrieve Ground Coffee:**

Unscrew the bottom collection container to access your freshly ground coffee.

**Demonstration Video:**

Your browser does not support the video tag.

Video 1: TIMEMORE Chestnut C2 Manual Coffee Grinder Operation

This video demonstrates the process of using the TIMEMORE Chestnut C2 Manual Coffee Grinder, including loading beans, adjusting grind size, and the grinding action.

**5. Maintenance**

Proper maintenance ensures the longevity and consistent performance of your grinder.

• **Cleaning:**

After each use, it is recommended to clean the burrs and grinding chamber. Use the complimentary brush to remove any residual coffee grounds. *Do not rinse the grinder with water*, as this can damage the internal mechanisms and burrs.



## Steps For Usage

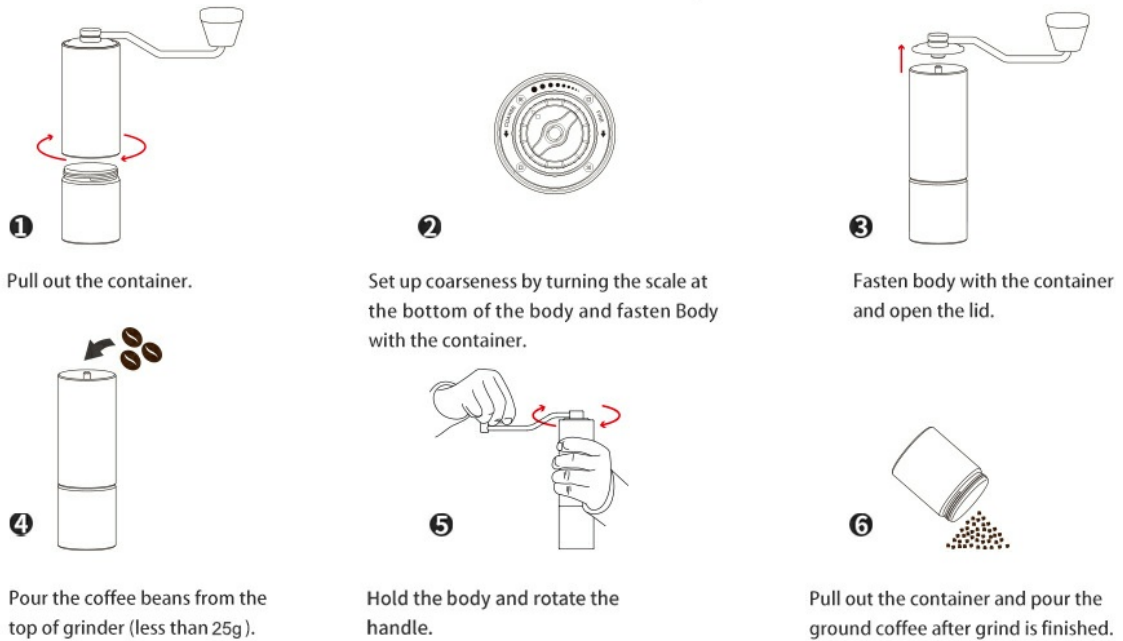


Figure 7: Cleaning Methods for the Grinder

Emphasizes dry cleaning methods like brushing or using an air blower, and explicitly warns against washing with water.

- **Disassembly:**

The compact design allows for easy disassembly without tools for thorough cleaning. However, it is generally not recommended to frequently disassemble and replace parts unless necessary, as this helps maintain grinding accuracy. If disassembly is required, please refer to the detailed instructions provided in the full product manual.

## 6. Troubleshooting

If you encounter any issues with your TIMEMORE Chestnut C2 Manual Coffee Grinder, please consider the following:

- **Grinding Difficulty:** Ensure no foreign objects are in the grinding chamber. Check if the burrs are clogged with old coffee grounds and clean thoroughly.
- **Inconsistent Grind:** Verify that the grind adjustment dial is securely set and has not shifted during grinding. Regular cleaning helps maintain burr alignment.

For persistent issues or further assistance, please refer to the Warranty and Support section to contact customer service.

## 7. Specifications

Specification	Detail
---------------	--------

Specification	Detail
Brand	TIMEMORE
Model Number	C2 Manual
Color	C2 Gray
Material	Stainless Steel
Item Weight	430g
Product Dimensions	2.05"L x 2.05"W x 5.79"H
UPC	782897534195
Manufacturer	TIMEMORE
First Available Date	December 25, 2019

## 8. Warranty and Support

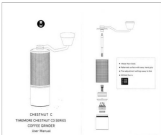
TIMEMORE is committed to providing high-quality products and excellent customer service.

If you have any questions or are not satisfied with your product, please do not hesitate to contact us by sending a message via Amazon. We are dedicated to providing a response and a 100% satisfactory solution within 24 hours.

For more information or to register your product, please visit the official TIMEMORE store on Amazon:[TIMEMORE Store](#).

© 2024 TIMEMORE. All rights reserved.



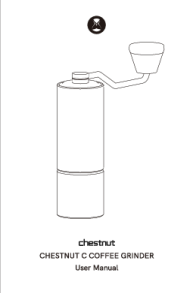
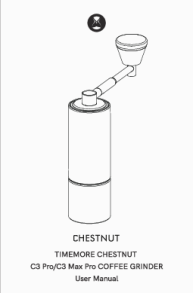
### Related Documents - C2 Manual



[TIMEMORE Chestnut C3 Series Coffee Grinder User Manual](#)

User manual for the TIMEMORE Chestnut C3 Series coffee grinder. Learn how to grind coffee, adjust grind settings for various brewing methods (espresso, pour-over, French press), and find troubleshooting tips. Features include an all-metal body, anti-slip grip, and precise S2C660 burrs.



 <p>CHESTNUT C3 ESP PRO Sharp Burrs with Hardness HRC 55-56 Cut beans fast and consistently</p>	<p><a href="#">Timemore Chestnut C3 ESP PRO Coffee Grinder - Features and Specifications</a></p> <p>Discover the Timemore Chestnut C3 ESP PRO, a professional manual coffee grinder featuring sharp S2C 660 burrs, precise CNC cutting, dual bearings for stability, and adjustable coarseness for various brewing methods. Learn about its materials, dimensions, and usage precautions.</p>
 <p>CHESTNUT C3 TIMEMORE CHESTNUT C3S Pro &amp; C3 ESP Pro User Manual</p>	<p><a href="#">TIMEMORE Chestnut C3S Pro &amp; C3 ESP Pro Manual Coffee Grinder User Manual</a></p> <p>User manual for the TIMEMORE Chestnut C3S Pro and C3 ESP Pro manual coffee grinders, covering features, assembly, folding, grinding, grind adjustment, troubleshooting, and warranty information. Features include an all-metal body, S2C 660 burrs, and a foldable handle.</p>
 <p>CHESTNUT S3 TIMEMORE CHESTNUT S3 COFFEE GRINDER User Manual</p>	<p><a href="#">TIMEMORE CHESTNUT S3 Coffee Grinder User Manual - Foldable &amp; Adjustable Hand Grinder</a></p> <p>Official user manual for the TIMEMORE CHESTNUT S3 Coffee Grinder. Learn how to use, adjust grind settings, fold the handle, and troubleshoot this high-quality hand grinder with S2C 890 burrs.</p>
 <p>CHESTNUT TIMEMORE CHESTNUT C COFFEE GRINDER User Manual</p>	<p><a href="#">Timemore Chestnut C Coffee Grinder User Manual</a></p> <p>User manual for the Timemore Chestnut C Coffee Grinder, detailing its features, assembly, operation, adjustment, and troubleshooting.</p>
 <p>CHESTNUT TIMEMORE CHESTNUT C3 Pro/C3 Max Pro COFFEE GRINDER User Manual</p>	<p><a href="#">TIMEMORE Chestnut C3 Pro/C3 Max Pro Coffee Grinder User Manual</a></p> <p>A comprehensive user manual for the TIMEMORE Chestnut C3 Pro and C3 Max Pro coffee grinders, detailing features, folding instructions, grinding operation, grind adjustment, cautions, troubleshooting, and warranty information.</p>