

## Chief VCTUB

# Chief VCTUB XL Universal Projector Mount User Manual

Model: VCTUB

## INTRODUCTION

---

This manual provides detailed instructions for the installation, operation, and maintenance of the Chief VCTUB XL Universal Tool-Free Projector Mount. Designed for quick installation and precise adjustment, this mount supports laser projectors weighing between 50 and 150 lbs (22.7 – 68 kg). Please read this manual thoroughly before installation and use to ensure proper setup and safe operation.

## SAFETY INFORMATION

---

**WARNING: Improper installation or use of this product can result in serious injury or damage to equipment. Always follow all instructions carefully.**

- Ensure the mounting surface can safely support the combined weight of the mount and the projector.
- Do not exceed the maximum weight capacity of 150 lbs (68 kg).
- Use appropriate tools and hardware for installation. If unsure, consult a qualified installer.
- Keep all parts out of reach of children.
- Regularly inspect the mount for signs of wear or damage. Do not use if damaged.

## PACKAGE CONTENTS

---

Verify that all components are present before beginning installation:

- Chief VCTUB XL Projector Mount Assembly
- Universal mounting legs (4)
- Mounting hardware kit (various screws, washers, nuts)
- Installation template
- User Manual (this document)

## SETUP AND INSTALLATION

---

The Chief VCTUB XL mount is designed for tool-free adjustments, but initial installation requires basic tools.

## 1. Prepare the Mounting Surface

Identify the desired mounting location. Ensure it is structurally sound and can support the combined weight of the mount and projector. For ceiling installations, locate ceiling joists or suitable structural supports.

## 2. Attach the Ceiling Plate (if applicable)

If using a separate ceiling plate (sold separately or part of a larger Chief system), attach it securely to the ceiling using appropriate fasteners. Refer to the ceiling plate's specific instructions.

## 3. Assemble the Mount

The VCTUB XL mount consists of a main body and four adjustable legs. Attach the four universal mounting legs to the main body of the mount using the provided screws. Ensure they are securely fastened but allow for adjustment.

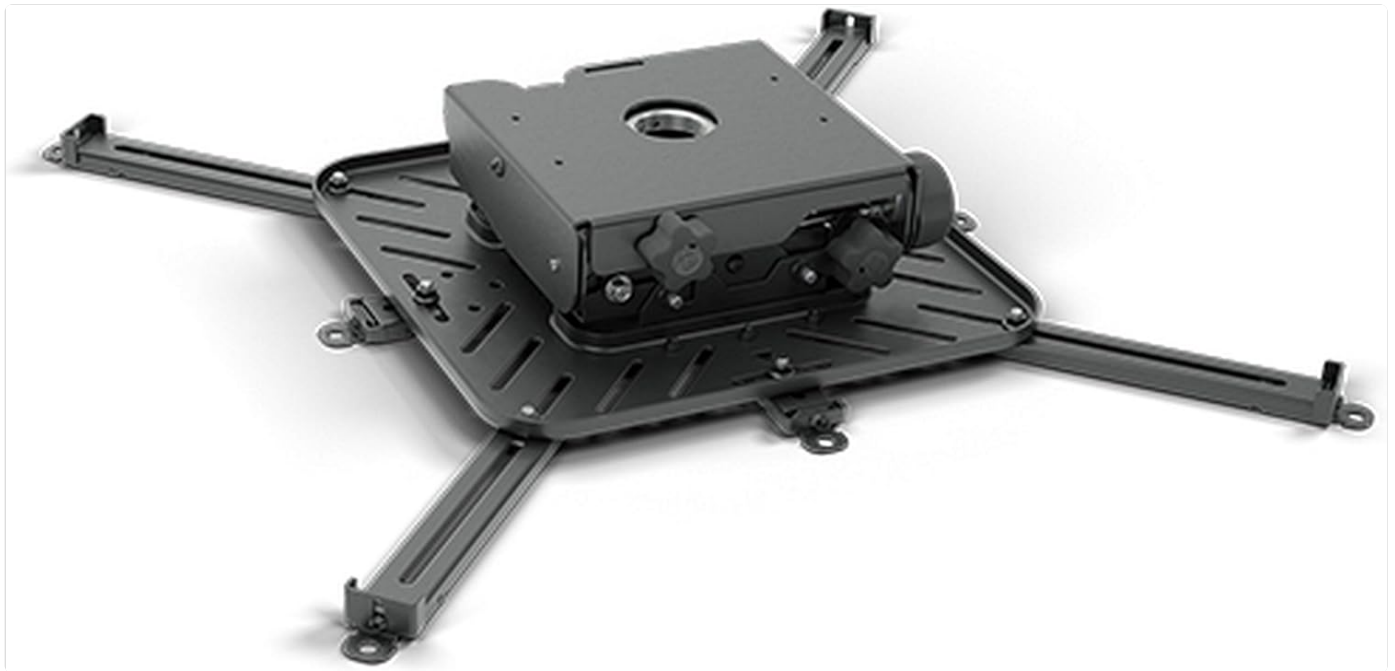


Image: The Chief VCTUB XL Universal Projector Mount, shown from an angled top-down perspective. It features a central mounting plate with a quick-release mechanism, and four adjustable arms extending outwards, designed to attach to a projector. The mount is black and has a robust, industrial design.

## 4. Attach Projector to Mount

1. Align the mounting holes on your projector with the slots on the VCTUB XL's adjustable legs.
2. Use the appropriate screws from the hardware kit to secure the projector to the mount legs. Ensure the screws are not too long, which could damage the projector.
3. Adjust the position of the legs to ensure the projector is balanced and securely attached.

## 5. Mount the Projector Assembly

Carefully lift the projector assembly (projector attached to the VCTUB XL mount) and align it with the ceiling plate or direct mounting location. Secure the mount to the ceiling plate or structural support using the appropriate locking mechanism or fasteners. Ensure a secure connection before releasing the assembly.

## OPERATING AND ADJUSTMENTS

---

The VCTUB XL features tool-free MicroZone adjustment for precise image alignment.

## MicroZone Adjustment

Once the projector is mounted, use the integrated adjustment knobs on the mount to fine-tune the projector’s pitch, roll, and yaw. These adjustments allow for precise image registration on your screen.

- **Pitch Adjustment:** Rotate the front/back adjustment knob to tilt the projector up or down.
- **Roll Adjustment:** Rotate the side-to-side adjustment knob to level the projector horizontally.
- **Yaw Adjustment:** Rotate the base of the mount or use the dedicated yaw adjustment (if present on your specific model) to rotate the projector left or right for horizontal alignment.

Make small adjustments and check the projected image until it is perfectly aligned and square on the screen.

## MAINTENANCE

The Chief VCTUB XL Projector Mount requires minimal maintenance to ensure long-term performance.

- **Cleaning:** Wipe the mount with a soft, dry cloth to remove dust. Do not use abrasive cleaners or solvents.
- **Inspection:** Periodically check all fasteners and connections to ensure they remain tight and secure. Look for any signs of wear, corrosion, or damage.
- **Lubrication:** The adjustment mechanisms are designed for smooth operation and typically do not require lubrication. If any mechanism feels stiff, contact Chief support.

## TROUBLESHOOTING

If you encounter issues with your Chief VCTUB XL Projector Mount, refer to the following common problems and solutions:

Problem	Possible Cause	Solution
Projector image is crooked or misaligned.	Mount not level or adjustments needed.	Use the MicroZone adjustment knobs to fine-tune pitch, roll, and yaw. Ensure the ceiling plate is level.
Mount feels unstable.	Loose fasteners or improper installation.	Check all screws and connections. Ensure the mount is securely attached to a structural support. Re-read installation instructions.
Projector does not fit the mount legs.	Incorrect leg adjustment or incompatible projector.	Ensure the universal legs are fully extended and adjusted to match your projector's mounting pattern. Verify projector weight is within limits.

## SPECIFICATIONS

Feature	Detail
Model Number	VCTUB
Brand	Chief
Color	Black

Feature	Detail
Mounting Type	Universal Projector Mount (Ceiling/Wall compatible)
Weight Capacity	50 - 150 lbs (22.7 - 68 kg)
Adjustment	Tool-free MicroZone adjustment (Pitch, Roll, Yaw)
Item Weight	31.7 pounds (14.38 kg)
Package Dimensions	20.6 x 19.6 x 7.5 inches (52.3 x 49.8 x 19.1 cm)

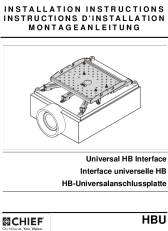
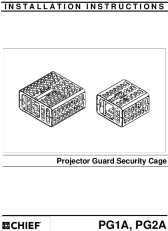
## WARRANTY AND SUPPORT

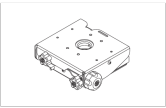



Chief products are designed for durability and reliability. For specific warranty information, please refer to the warranty card included with your product or visit the official Chief website. For technical support, troubleshooting assistance beyond this manual, or to inquire about replacement parts, please contact Chief customer service:

- **Website:** [www.legrandav.com/products/chief](http://www.legrandav.com/products/chief) (This is a common parent company for Chief)
- **Phone:** Refer to the Chief website for regional contact numbers.
- **Email:** Refer to the Chief website for support email addresses.

Please have your model number (VCTUB) and purchase date available when contacting support.

## Related Documents - VCTUB

	<p><a href="#">Chief VCMU Heavy Duty Universal Projector Mount Installation Instructions</a></p> <p>Comprehensive installation guide for the Chief VCMU Heavy Duty Universal Projector Mount, detailing safety precautions, required tools, parts, and step-by-step assembly and adjustment procedures.</p>
	<p><a href="#">Chief PG1A/PG2A Projector Guard Security Cage Installation Instructions</a></p> <p>Comprehensive installation guide for the Chief PG1A and PG2A projector guard security cages, detailing specifications, parts, tools, and step-by-step assembly procedures for secure projector mounting.</p>

<p><b>INSTALLATION INSTRUCTIONS</b></p>  <p>XL Projector Mount</p> <p><b>CHIEF</b> VCT</p>	<p><a href="#">Chief VCT XL Projector Mount Installation Instructions</a></p> <p>Detailed installation guide for the Chief VCT XL Projector Mount (Model VCT), covering safety instructions, dimensions, parts, tools, mounting procedures, and adjustments. Includes multilingual legend and contact information.</p>
<p>Owner's Manual &amp; Safety Instructions</p> <p>See this Manual for important safety information and instructions. Read and understand all instructions before using the tool. Failure to follow instructions may result in injury or property damage.</p> <p><b>CHIEF</b></p> <p><b>PROFESSIONAL</b> <b>AIR PUNCH/FLANGE</b></p>  <p>Read and understand all instructions before using the tool. Failure to follow instructions may result in injury or property damage.</p> <p><b>CHIEF</b></p>	<p><a href="#">Chief Professional Air Punch/Flange Tool Owner's Manual and Safety Instructions</a></p> <p>This manual provides safety warnings, precautions, assembly, operating, inspection, maintenance, and cleaning procedures for the Chief Professional Air Punch/Flange Tool. It includes detailed instructions on tool setup, air supply, operation, troubleshooting, and parts lists.</p>
<p><b>INSTALLATION INSTRUCTIONS</b></p>  <p>Thinstall™ Medium Static Universal Mount</p> <p><b>CHIEF</b> MSTU</p>	<p><a href="#">Chief Thinstall MSTU Medium Static Universal Mount Installation Instructions</a></p> <p>Detailed installation instructions for the Chief Thinstall MSTU Medium Static Universal Mount, including safety warnings, parts list, and step-by-step assembly guidance.</p>
<p><b>INSTALLATION INSTRUCTIONS</b></p> <p>Instructions en français Instrucciones en español Instruções em português</p>  <p>Thinstall™ Large Tilt Universal Mount</p> <p>Read and understand all instructions before using the tool. Failure to follow instructions may result in injury or property damage.</p> <p><b>CHIEF</b> LTTU</p>	<p><a href="#">Chief Thinstall Large Tilt Universal Mount Installation Guide</a></p> <p>Comprehensive installation instructions for the Chief Thinstall™ Large Tilt Universal Mount (LTTU). This guide provides detailed steps for wall plate mounting, display attachment, tilt adjustment, and cable management, ensuring safe and proper setup of your display.</p>