

Manuals+

[Q & A](#) | [Deep Search](#) | [Upload](#)

[manuals.plus](#) /

› [Chief](#) /

› [Chief VCTUW XL Universal Projector Mount User Manual](#)

Chief VCTUW

Chief VCTUW XL Universal Projector Mount User Manual

Model: VCTUW

PRODUCT OVERVIEW

The Chief VCTUW XL Universal Projector Mount is engineered for quick installation and a clean aesthetic. This mount is designed to support laser projectors weighing between 50 and 150 lbs (22.7 – 68 kg). It features tool-free MicroZone adjustment for precise and reliable image registration.

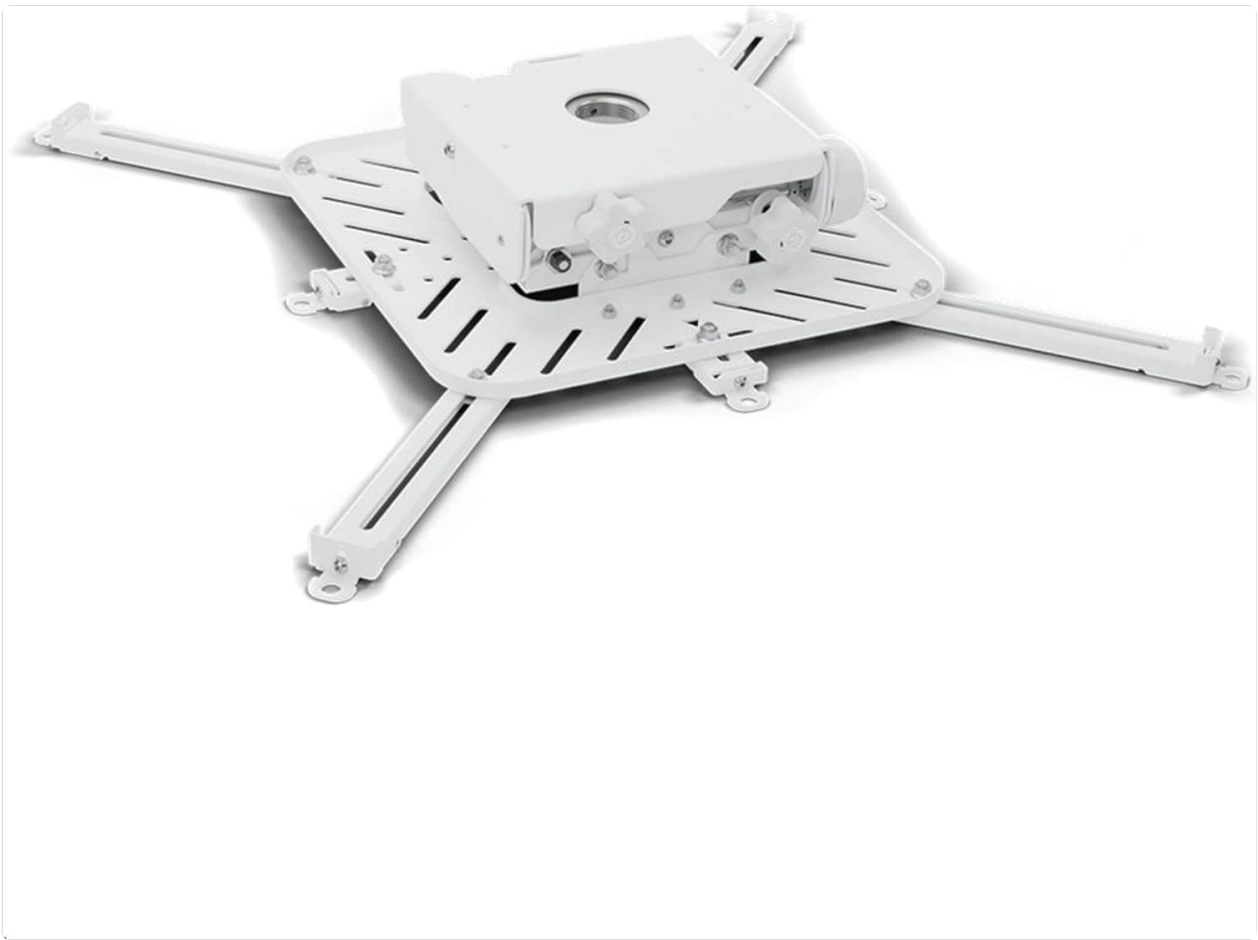


Figure 1: Chief VCTUW XL Universal Projector Mount. This image displays the white projector mount from an elevated angle, highlighting its central mounting plate and four adjustable arms designed to secure a projector.

SAFETY INFORMATION

Always read and understand all instructions before beginning installation. Improper installation can lead to equipment damage or personal injury. Ensure the mounting surface can support the combined weight of the mount and the projector.

- Do not exceed the maximum weight capacity of 150 lbs (68 kg).
- Use appropriate fasteners for the mounting surface (wood studs, concrete, etc.).
- Ensure all connections are secure before releasing the projector.
- Keep children and pets away from the installation area.

SETUP AND INSTALLATION

Tools Required:

- Drill
- Drill bits appropriate for fasteners

- Stud finder (for wood stud installation)
- Level
- Measuring tape
- Pencil

Installation Steps:

1. **Prepare the Mounting Surface:** Identify the desired location for the projector mount. Ensure the surface is structurally sound and can support the weight.
2. **Attach Ceiling Plate (if applicable):** Secure the ceiling plate (sold separately or included with specific kits) to the ceiling using appropriate hardware. Ensure it is level and firmly attached.
3. **Connect Extension Column (if applicable):** If using an extension column, attach it to the ceiling plate and then to the projector mount.
4. **Attach Mount to Projector:** Align the universal arms of the VCTUW mount with the mounting points on your projector. Use the provided screws and spacers to secure the mount to the projector. The tool-free design allows for easy adjustment of the arms to fit various projector sizes.
5. **Mount Projector Assembly:** Carefully lift the projector with the attached mount and connect it to the ceiling plate/extension column assembly. Ensure the quick-release mechanism (if present) is fully engaged and locked.
6. **Adjust Projector Position:** Use the MicroZone adjustment knobs on the mount to fine-tune the projector's tilt, roll, and yaw for perfect image alignment.

OPERATING THE MOUNT (ADJUSTMENTS)

The VCTUW mount features tool-free MicroZone adjustments for precise projector positioning.

- **Tilt Adjustment:** Rotate the front and rear adjustment knobs to control the vertical tilt of the projector.
- **Roll Adjustment:** Rotate the side adjustment knobs to correct any horizontal tilt or roll.
- **Yaw Adjustment:** Loosen the main pivot knob slightly, adjust the projector's horizontal rotation, and then re-tighten the knob.

Make small, incremental adjustments until the projected image is perfectly aligned with your screen.

MAINTENANCE

The Chief VCTUW projector mount requires minimal maintenance to ensure long-lasting performance.

- **Cleaning:** Periodically wipe the mount with a soft, dry cloth to remove dust. Do not use abrasive cleaners or solvents.
- **Inspection:** Annually inspect all fasteners and connections to ensure they remain tight and secure. Check for any signs of wear or damage.
- **Lubrication:** No lubrication is required for the adjustment mechanisms.

TROUBLESHOOTING

Problem	Possible Cause	Solution
Projector image is crooked/not level.	Mount not level or fine adjustments needed.	Use the MicroZone tilt and roll adjustments to level the image. Ensure the ceiling plate is level during installation.
Projector feels loose on the mount.	Mounting screws not fully tightened or quick-release not engaged.	Verify all screws attaching the projector to the mount arms are secure. Ensure the quick-release mechanism (if applicable) is fully locked.
Difficulty adjusting projector position.	Adjustment knobs are too tight or mechanism is stiff.	Ensure adjustment knobs are not overtightened. If stiff, gently work the mechanism. Do not force adjustments.

SPECIFICATIONS

- **Model:** VCTUW
- **Color:** White
- **Weight Capacity:** 50-150 lbs (22.7 – 68 kg)
- **Adjustment Type:** Tool-free MicroZone adjustment (Tilt, Roll, Yaw)
- **Mounting Type:** Universal Projector Mount (typically ceiling or pole mounted with adapter)
- **Item Weight:** 31.7 pounds (Mount only)
- **Manufacturer:** CHIEF MANUFACTURING

WARRANTY INFORMATION

Chief products are designed and manufactured to the highest standards. For specific warranty details, please refer to the official Chief website or contact Chief customer support. Keep your proof of purchase for warranty claims.

Note: Warranty terms may vary by region and product.

CUSTOMER SUPPORT

For technical assistance, troubleshooting beyond this manual, or parts inquiries, please contact Chief customer support.

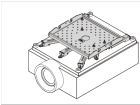



Website: www.legrandav.com/products/chief



Please have your product model number (VCTUW) and purchase information ready when contacting support.

© 2024 Chief. All rights reserved.

This manual is for informational purposes only. Specifications are subject to change without notice.

Related Documents - VCTUW

<div><div>INSTALLATION INSTRUCTIONS INSTRUCTIONS D'INSTALLATION MONTAGEANLEITUNG</div><div></div><div>Universal HB Interface Interface universelle HB HB-Universalschnittplatte</div><div><div>CHIEF</div><div>HBU</div></div></div>	<p>Chief VCMU Heavy Duty Universal Projector Mount Installation Instructions</p> <p>Comprehensive installation guide for the Chief VCMU Heavy Duty Universal Projector Mount, detailing safety precautions, required tools, parts, and step-by-step assembly and adjustment procedures.</p>
<div><div>INSTALLATION INSTRUCTIONS</div><div></div><div>Projector Guard Security Cage</div><div><div>CHIEF</div><div>PG1A, PG2A</div></div></div>	<p>Chief PG1A/PG2A Projector Guard Security Cage Installation Instructions</p> <p>Comprehensive installation guide for the Chief PG1A and PG2A projector guard security cages, detailing specifications, parts, tools, and step-by-step assembly procedures for secure projector mounting.</p>
<div><div>INSTALLATION INSTRUCTIONS</div><div></div><div>XL Projector Mount</div><div><div>CHIEF</div><div>VCT</div></div></div>	<p>Chief VCT XL Projector Mount Installation Instructions</p> <p>Detailed installation guide for the Chief VCT XL Projector Mount (Model VCT), covering safety instructions, dimensions, parts, tools, mounting procedures, and adjustments. Includes multilingual legend and contact information.</p>
<div><div>Owner's Manual & Safety Instructions</div><div></div><div>PROFESSIONAL AIR PUNCH/FLANGE</div><div><div>CHIEF</div><div></div></div></div>	<p>Chief Professional Air Punch/Flange Tool Owner's Manual and Safety Instructions</p> <p>This manual provides safety warnings, precautions, assembly, operating, inspection, maintenance, and cleaning procedures for the Chief Professional Air Punch/Flange Tool. It includes detailed instructions on tool setup, air supply, operation, troubleshooting, and parts lists.</p>

<div><div>INSTALLATION INSTRUCTIONS</div><div><div>Thinstall™ Medium Static Universal Mount</div></div><div><div>CHIEF</div><div>MSTU</div></div></div>	<div><div>Chief Thinstall MSTU Medium Static Universal Mount Installation Instructions</div><div>Detailed installation instructions for the Chief Thinstall MSTU Medium Static Universal Mount, including safety warnings, parts list, and step-by-step assembly guidance.</div></div>
<div><div>INSTALLATION INSTRUCTIONS</div><div><div><div>Notre système de fixation s'est traduit en français Notre système de fixation s'est traduit en français</div><div><div>Thinstall™ Large Tilt Universal Mount</div></div></div><div><div>CHIEF</div><div>LTTU</div></div></div></div>	<div><div>Chief Thinstall Large Tilt Universal Mount Installation Guide</div><div>Comprehensive installation instructions for the Chief Thinstall™ Large Tilt Universal Mount (LTTU). This guide provides detailed steps for wall plate mounting, display attachment, tilt adjustment, and cable management, ensuring safe and proper setup of your display.</div></div>