

[Manuals.plus](#) /

› [Samsung](#) /

› Samsung T7 Touch Portable SSD 2TB User Manual

Samsung MU-PC2T0K/WW

Samsung T7 Touch Portable SSD 2TB User Manual

Model: MU-PC2T0K/WW

1. INTRODUCTION

This manual provides instructions for the Samsung T7 Touch Portable Solid State Drive (SSD), a high-performance external storage device. The T7 Touch offers fast data transfer speeds and enhanced security features, including fingerprint recognition. This document covers the setup, operation, maintenance, and troubleshooting of your device. The T7 Touch is designed for durability, capable of withstanding drops from up to 6 feet, based on internal testing.

2. PACKAGE CONTENTS

Verify that all items are present in the product packaging:

- Samsung T7 Touch Portable SSD
- USB Type-C to Type-C Cable
- USB Type-C to Type-A Cable
- User Manual (this document)



Image: The Samsung T7 Touch Portable SSD in black, showing the Samsung logo and the illuminated fingerprint sensor area.

3. SETUP AND INITIAL USE

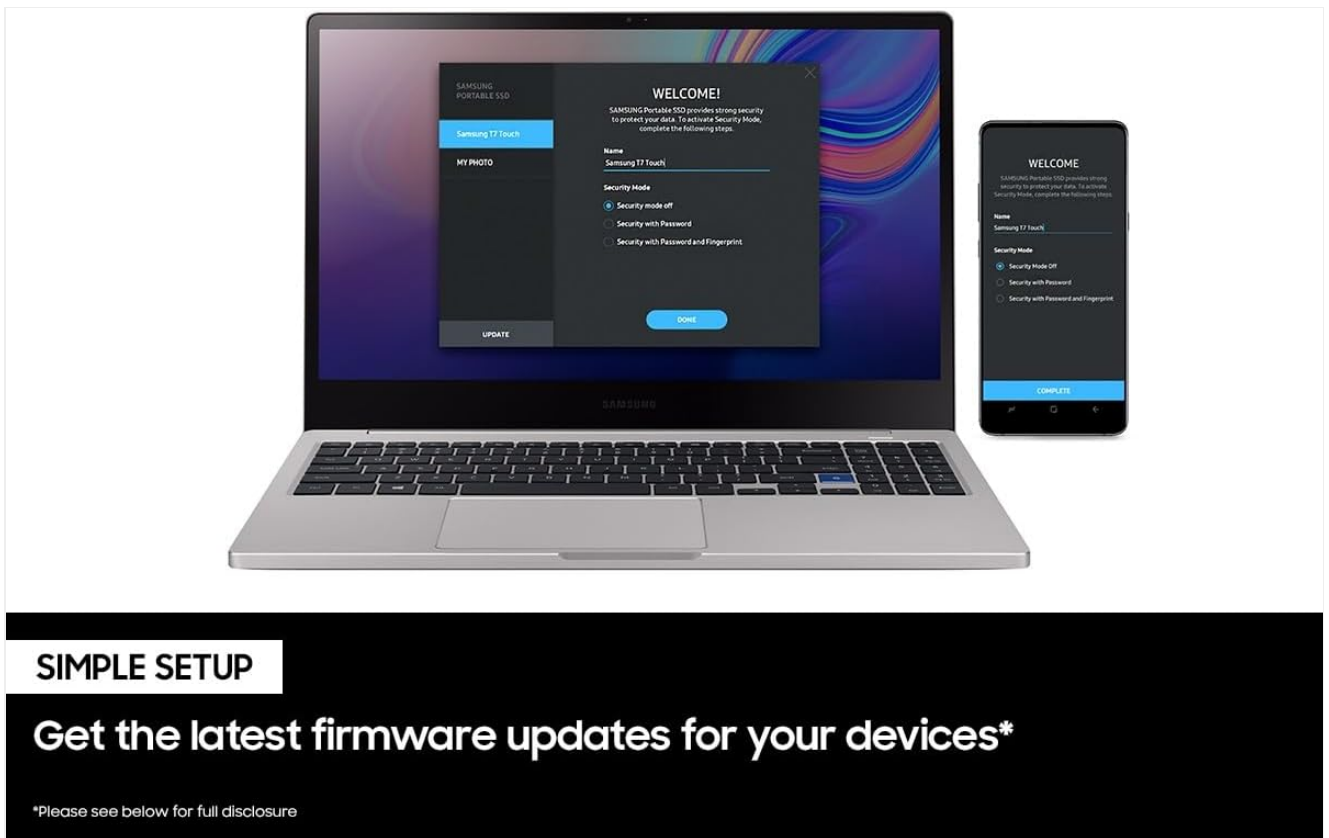
Follow these steps to set up your Samsung T7 Touch Portable SSD:

1. **Connect the SSD:** Use one of the provided USB cables (Type-C to Type-C or Type-C to Type-A) to connect the T7 Touch SSD to your computer or compatible device.



Image: A close-up view of the Samsung T7 Touch Portable SSD showing the USB-C port and a cable connected.

2. **Install Software:** Upon initial connection, the SSD will appear as a small partition containing the setup software. Run the installer for your operating system (Windows, macOS, or Android). This software is required to enable security features and manage the device.



SIMPLE SETUP

Get the latest firmware updates for your devices*

*Please see below for full disclosure

Image: A laptop and a smartphone displaying the Samsung T7 Touch setup software interface, illustrating the simple setup process.

- 3. Set Up Security:** The software will guide you through setting up password protection and registering fingerprints. You can register multiple fingerprints for convenient access. The fingerprint security operates independently of the host device's operating system.
- 4. Firmware Updates:** The software also allows for firmware updates, which are important for optimal performance and compatibility. Ensure your device has the latest firmware.

4. OPERATING INSTRUCTIONS

4.1. Fingerprint Security

The T7 Touch features an integrated fingerprint sensor for secure data access. Once enabled through the setup software, the drive will remain locked until a registered fingerprint is scanned or the password is entered.

- **Unlocking:** Place a registered finger on the sensor. The LED indicator will confirm successful recognition.
- **Security Mode:** The drive can be configured for password-only or fingerprint/password security.



Image: Two Samsung T7 Touch SSDs (black and silver) with an overlay graphic of a fingerprint, illustrating the data protection feature.

4.2. Data Transfer

The T7 Touch SSD utilizes USB 3.2 Gen 2 technology for high-speed data transfer.

- **Speed:** Achieve sequential read speeds of up to 1,050 MB/s and sequential write speeds of up to 1,000 MB/s. *Note: Actual performance may vary depending on the host configuration. To reach maximum speeds, the host device and connection cables must support USB 3.2 Gen 2, and UASP mode must be enabled.*
- **Usage:** Once unlocked, the drive functions like any other external storage device, allowing you to drag and drop files, or use it for backups and direct editing.



Image: A graphic depicting the Samsung T7 Touch SSD connected via USB-C, highlighting its high sequential read and write speeds.

4.3. LED Status Indicator

The T7 Touch features an LED square that provides visual feedback on the drive's status:

- **Solid Blue:** Drive is connected and idle.
- **Flashing Blue:** Data transfer is in progress.
- **Other patterns:** Refer to the software for specific error codes or status indications.

5. COMPATIBILITY

The Samsung T7 Touch Portable SSD is designed for broad compatibility with various devices and operating systems:

- **Operating Systems:** Windows 7 and higher, macOS X 10.10 and higher, Android 5.1 (Lollipop) and higher. Older versions of these operating systems may not be supported.
- **Devices:** PC, Mac, Android devices, gaming consoles (e.g., PlayStation, Xbox), tablets, and iPhone 15/16.
- **USB Standards:** Compatible with USB 3.2 Gen 2, USB 3.0, and USB 2.0.

Note: Compatibility with host devices may vary. Some operating systems may require T7 Touch reformatting. Please find the compatible devices list on [Samsung.com/support](https://www.samsung.com/support).



COMPATIBILITY

**Compatible with PC, Mac, Android devices,
gaming consoles, and more***

*Please see below for full disclosure

Image: A person typing on a laptop with the Samsung T7 Touch SSD connected, demonstrating its compatibility with various devices.

6. MAINTENANCE AND CARE

To ensure the longevity and optimal performance of your Samsung T7 Touch SSD, observe the following guidelines:

- **Physical Protection:** The drive is designed to be shock-resistant and can withstand drops from up to 6 feet. However, avoid intentional drops or excessive force.
- **Temperature:** The T7 Touch maintains its outer casing temperature below 118.4°F (48°C) during normal operation, except when the ambient temperature is above 118.4°F. While it may feel warm during heavy use, this is normal. Avoid exposing the drive to extreme temperatures.
- **Firmware:** Regularly check for and install firmware updates using the Samsung Portable SSD software to ensure the best performance and security. Firmware updates require a PC or Mac and an internet connection.
- **Cleaning:** Use a soft, dry cloth to clean the exterior of the drive. Avoid liquid cleaners.

- **Safe Ejection:** Always safely eject the drive from your operating system before disconnecting the cable to prevent data corruption.

7. TROUBLESHOOTING

If you encounter issues with your Samsung T7 Touch SSD, consider the following troubleshooting steps:

- **Drive Not Detected:**
 - Ensure the USB cable is securely connected to both the SSD and the host device.
 - Try a different USB port on your device.
 - Test with the other provided USB cable (Type-C to Type-A or Type-C to Type-C). Faulty cables can prevent detection.
 - Restart your computer or device.
- **Fingerprint Sensor Not Responding:**
 - Ensure your finger is clean and dry.
 - Try a different registered finger.
 - If multiple attempts fail, unlock the drive using your password via the Samsung Portable SSD software.
 - Re-register your fingerprints if the issue persists.
- **Slow Transfer Speeds:**
 - Verify that your host device's USB port supports USB 3.2 Gen 2. Older USB standards (USB 2.0, USB 3.0) will result in lower speeds.
 - Ensure UASP mode is enabled on your host device (if applicable).
 - Close other applications that might be using system resources or the drive.
- **Software Issues:**
 - Reinstall the Samsung Portable SSD software.
 - Check for software updates.

If problems persist, consult the official Samsung support website or contact customer service.

8. SPECIFICATIONS

Feature	Detail
Model Number	MU-PC2T0K/WW
Digital Storage Capacity	2 TB
Interface	USB 3.2 Gen 2 (compatible with USB 3.0, USB 2.0)
Sequential Read Speed	Up to 1,050 MB/s
Sequential Write Speed	Up to 1,000 MB/s
Dimensions (LxWxH)	3.4 x 2.2 x 0.3 inches (85 x 57 x 8 mm)
Weight	2 ounces (58 grams)
Color	Black
Special Features	Hardware Encryption, Portable, Fingerprint Security
Shock Resistance	Withstands drops from up to 6 feet
Manufacturer	Samsung Electronics



Image: The Samsung T7 Touch Portable SSD with its dimensions (3.4" x 2.2" x 0.3") clearly indicated.

9. WARRANTY AND SUPPORT

For detailed warranty information and technical support, please refer to the official Samsung website.

- **Official User Manual (PDF):** [Download PDF](#)
- **Samsung Support Website:** Visit www.samsung.com/us/support/warranty/ for warranty details and Samsung.com/support for product support.

