

rockspace AC750

rockspace WiFi Repeater User Manual

Model: AC750

INTRODUCTION

This manual provides comprehensive instructions for setting up, operating, and maintaining your rockspace AC750 Dual Band WiFi Repeater. This device is designed to extend the coverage of your existing wireless network, eliminating dead zones and providing a stable internet connection throughout your home or office.

PRODUCT OVERVIEW

The rockspace AC750 WiFi Repeater is a compact device that plugs directly into a wall outlet. It features dual external antennas for enhanced signal transmission and reception, and LED indicators to help determine optimal placement.



Figure 1: Front view of the rockspace AC750 WiFi Repeater, showing its compact design, dual antennas, and LED indicators for Signal, WPS, and Power.

Package Contents

- rockspace AC750 WiFi Repeater
- Instruction Manual (this document)

SETUP INSTRUCTIONS

There are two primary methods to set up your rockspace AC750 WiFi Repeater: using the WPS button or via a web browser.

Method 1: WPS (Wi-Fi Protected Setup)

1. **Power On:** Plug the rockspace AC750 WiFi Repeater into an electrical outlet near your main router. Wait for the Power LED to turn solid blue.
2. **Activate WPS on Router:** Press the WPS button on your main Wi-Fi router. Refer to your router's manual for the exact location and timing.
3. **Activate WPS on Repeater:** Within two minutes of pressing WPS on your router, press the WPS button on the rockspace AC750 Repeater. The WPS LED on the repeater will blink during the connection process.
4. **Verify Connection:** Once connected, the Signal LED on the repeater will turn solid blue, indicating a successful connection.
5. **Optimal Placement:** Unplug the repeater and move it to a location halfway between your router and the Wi-Fi dead zone. Ensure the Signal LED remains solid blue at the new location for optimal performance.



Figure 2: Illustration of the Quick Installation process using the WPS button on both the router and the rockspace AC750 Repeater.

Method 2: Web Browser Setup

1. **Power On:** Plug the rockspace AC750 WiFi Repeater into an electrical outlet near your main router. Wait for the Power LED to turn solid blue.
2. **Connect to Repeater's Wi-Fi:** On your computer or mobile device, connect to the Wi-Fi network named "rockspace_EXT" or similar (without a password).
3. **Access Setup Page:** Open a web browser and enter **re.rockspace.local** or **192.168.0.254** in the address bar.
4. **Login:** Create a new login password when prompted.
5. **Select Mode:** Choose "Repeater Mode" or "Access Point Mode" based on your needs.
6. **Select Network:** If in Repeater Mode, select your main Wi-Fi network from the list and enter its password.
7. **Configure Extended Network:** You can choose to keep the same network name (SSID) or create a new one for the extended network.
8. **Complete Setup:** Follow the on-screen instructions to finalize the setup. The repeater will restart.
9. **Verify Connection:** Once restarted, check the Signal LED. A solid blue light indicates a successful connection.

10. **Optimal Placement:** Unplug the repeater and move it to a location halfway between your router and the Wi-Fi dead zone. Ensure the Signal LED remains solid blue at the new location for optimal performance.

Optimal Placement Guidance

The intelligent LED indicators on the rockspace AC750 Repeater assist in finding the best location for signal extension. A solid blue Signal LED indicates a strong connection to your router, while a red or off LED suggests the repeater is too far or has a weak connection. Aim for a location where the Signal LED is consistently blue.



Figure 3: An overhead view of a house layout illustrating how the intelligent LED indicators on the rockspace AC750 Repeater help identify the best Wi-Fi spot. Blue areas indicate good signal, while red areas indicate poor signal, guiding users to place the extender effectively.

OPERATING MODES

The rockspace AC750 WiFi Repeater supports two main operating modes:

- **Repeater Mode:** Extends the existing Wi-Fi coverage of your main router. This is the most common mode for eliminating dead zones.
- **Access Point (AP) Mode:** Converts a wired internet connection into a wireless hotspot. Connect an

Ethernet cable from your router to the repeater's Ethernet port to create a new Wi-Fi network.

Ethernet Port Usage

The repeater includes an Ethernet port. In Repeater Mode, this port can be used to connect a wired device (e.g., a smart TV, gaming console, or PC) to your extended Wi-Fi network, providing a stable wired connection. In Access Point Mode, this port is used to receive the internet connection from your main router.

OPERATING INSTRUCTIONS

Connecting Devices

After successful setup, your extended Wi-Fi network will be available. Devices can connect to this network using the Wi-Fi name (SSID) and password configured during setup. The repeater supports up to 32 device connections, ensuring broad coverage for various electronic devices.



Figure 4: An illustration demonstrating the rockspace AC750 Repeater's capability to support multiple device connections, including printers, laptops, gaming consoles, TVs, and smartphones, across its extended Wi-Fi network.

Dual-Band Functionality

The AC750 operates on both 2.4 GHz and 5 GHz frequency bands. The 2.4 GHz band offers wider coverage and better penetration through walls, suitable for general browsing and smart home devices. The 5 GHz band provides faster speeds and lower latency, ideal for streaming HD video and online gaming, but with a shorter range.



Figure 5: A visual representation of the rockspace AC750 Repeater's dual-band capabilities, showing both 2.4GHz (300Mbps) and 5GHz (433Mbps) signals extending to various devices like tablets and smartphones, highlighting its compatibility with 802.11n/g/b/ac standards.

MAINTENANCE

Firmware Updates

Periodically check the rockspace official website for firmware updates. Updating the firmware can improve performance, add new features, and enhance security. Instructions for firmware updates are typically provided with the update package.

Cleaning

Ensure the device is unplugged before cleaning. Use a soft, dry cloth to wipe the exterior. Do not use liquid cleaners or aerosols, as they may damage the device.

TROUBLESHOOTING

- **No Power:** Ensure the repeater is securely plugged into a working electrical outlet. Check if the

Power LED is illuminated.

- **No Internet Connection:**

- Verify that your main router has an active internet connection.
- Check the Signal LED on the repeater. If it's off or red, the repeater is too far from the router or has a weak connection. Relocate the repeater closer to the router.
- Try restarting both your main router and the repeater.

- **Slow Speed:**

- Ensure the repeater is placed in an optimal location (solid blue Signal LED).
- Reduce interference by moving the repeater away from large metal objects, microwaves, or other electronic devices.
- Consider the number of devices connected to the extended network.

- **Setup Failure:**

- If WPS setup fails, try the web browser setup method.
- Ensure you are entering the correct Wi-Fi password for your main router.
- **Resetting the Repeater:** If issues persist, you may need to reset the repeater to factory settings. With the repeater powered on, use a paperclip to press and hold the reset button (usually a small pinhole) for about 8-10 seconds until the LEDs flash. After resetting, you will need to set up the repeater again.

- **Universal Compatibility:** The rockspace AC750 is compatible with all Wi-Fi 5 routers and 802.11n/g/b/ac standard routers. Ensure your router meets these standards.

Universally Compatible

Works with any Wi-Fi 5 router for
hassle-free reliability



Figure 6: An illustration depicting the universal compatibility of the rockspace AC750 WiFi Repeater with various types of Wi-Fi 5 routers and older 802.11a/b/g/n standards, ensuring broad usability.

SPECIFICATIONS

Feature	Detail
Model Number	AC750
Brand	rockspace
Wireless Communication Standard	802.11a/b/g/n/ac
Frequency Band Class	Dual-Band (2.4 GHz & 5 GHz)
Combined Data Transfer Rate	Up to 733 Mbps (300 Mbps for 2.4 GHz, 433 Mbps for 5 GHz)
Coverage	Up to 1292 sq.ft (360° full coverage)
Antennas	Dual External Antennas
Ports	1x Ethernet Port
Item Weight	13.1 ounces

Feature	Detail
Package Dimensions	5.79 x 4.72 x 4.29 inches

WARRANTY AND SUPPORT

Warranty Information

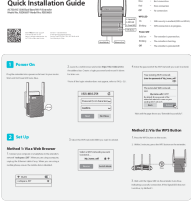

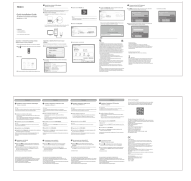

rockspace products typically come with a limited warranty. Please refer to the warranty card included with your product or visit the official rockspace website for detailed warranty terms and conditions. Keep your purchase receipt as proof of purchase for warranty claims.

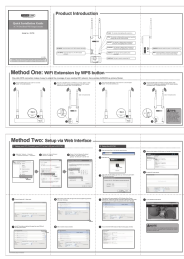
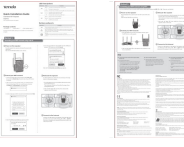
Customer Support

For technical assistance, troubleshooting, or product inquiries, please contact rockspace customer support. Contact information can usually be found on the official rockspace website or on the product packaging.

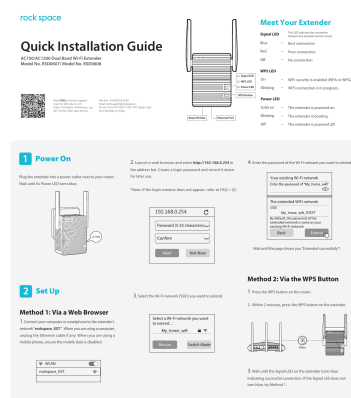
© 2023 rockspace. All rights reserved.

Related Documents - AC750

	<p>Quick Installation Guide: rockspace AC750/AC1200 Dual Band Wi-Fi Extender</p> <p>Step-by-step guide to setting up your rockspace AC750/AC1200 Dual Band Wi-Fi Extender (Model RSD0607/RSD0608) for enhanced wireless coverage. Includes setup methods, relocation tips, and troubleshooting.</p>
	<p>rockspace RSD0613 Whole Home Mesh WiFi System User Manual</p> <p>User manual for the rockspace RSD0613 Whole Home Mesh WiFi System (3-pack). Provides setup instructions, FAQ, LED indicator descriptions, and technical support information for this AC2100 Tri-band mesh WiFi system.</p>
	<p>ROCK AX1800 Wi-Fi 6 Dual-Band USB Adapter Quick Installation Guide</p> <p>This Quick Installation Guide provides step-by-step instructions for installing and connecting the ROCK AX1800 Wi-Fi 6 Dual-Band USB Adapter (Model U1/U1A) to Windows 10 computers. It covers adapter installation, Wi-Fi network connection, driver uninstallation, adding the 'This PC' icon, and includes regulatory information and support contact details.</p>
	<p>AX1800 Wi-Fi 6 Mesh System Quick Installation Guide</p> <p>Quick installation guide for the rockspace AX1800 Wi-Fi 6 Mesh System (Model RSD0624), detailing setup via the ROCK WIFI app or web browser, adding secondary nodes, and common FAQs.</p>

	<p>TOTOLINK EX750 AC750 Dual Band WiFi Range Extender Quick Installation Guide</p> <p>A concise guide to installing and setting up the TOTOLINK EX750 AC750 Dual Band WiFi Range Extender using WPS or a web interface. Learn how to extend your WiFi network coverage.</p>
	<p>Tenda A18/A15 Dual Band WiFi Repeater Quick Installation Guide</p> <p>Learn how to set up and extend your WiFi network with the Tenda A18 and A15 Dual Band WiFi Repeaters using this quick installation guide. Covers setup via Web UI and WPS, LED descriptions, button functions, and troubleshooting.</p>

Documents - rockspace – AC750



[\[pdf\] User Manual Installation Guide Frequently Asked Questions Guide](#)

rockspace AC750 AC1200 WiFi Range Extender User Guide A1hytand5Lmanual internal 2022 09

A1hytand5L |||

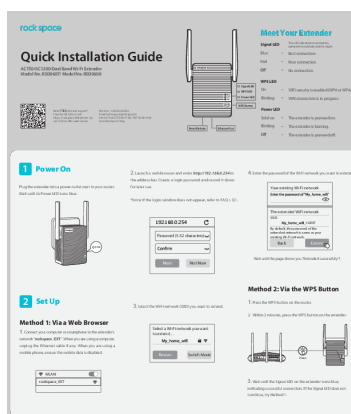
Quick Installation Guide **AC750/AC1200** Dual Band Wi-Fi Extender Model No.

RSD0607/ Model No. RSD0608 Need FREE technical support Scan the QR code or

visit <https://rockspace.afterservice.vip> 24/7 Online After-sales Service Hot-line: 1

833 816-6558 Email: techsupport@rockspace.cc Service Time: E...

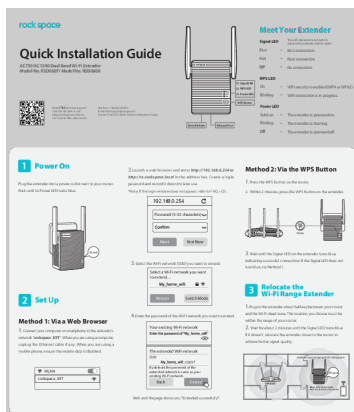
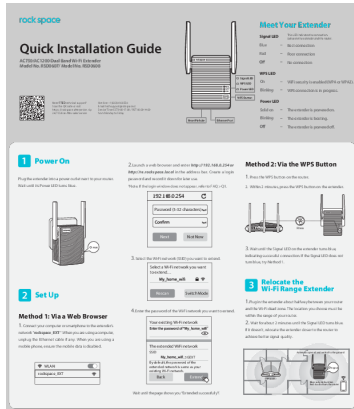
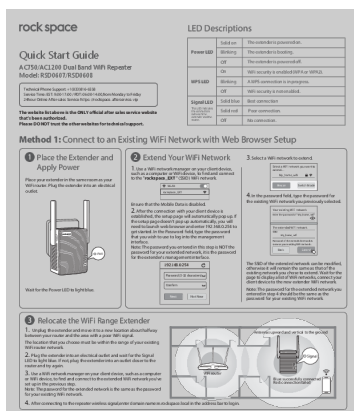
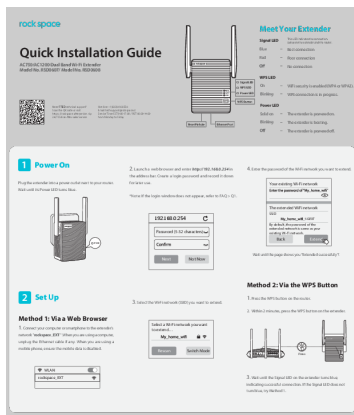
lang:en score:47 filesize: 1.48 M page_count: 2 document date: 2021-05-27



[Quick Installation Guide: rockspace AC750/AC1200 Dual Band Wi-Fi Extender](#)

Step-by-step guide to setting up your rockspace AC750/AC1200 Dual Band Wi-Fi Extender (Model RSD0607/RSD0608) for enhanced wireless coverage. Includes setup methods, relocation tips, and troubleshooting.

lang:en score:39 filesize: 1.48 M page_count: 2 document date: 2021-05-27



[\[pdf\]](#) Installation Guide Frequently Asked Questions Guide

rockspace-AC750 AC1200 WiFi - 20210520a user Quick Installation Guide Blue Best connection

Red Poor Quick< b> Guide< AC750 AC1200 Dual Band Wi-Fi Extender Model No RSD0607 RSD0608

Plug the extender into a power outlet next to your router Wait until its Power LED turns blue Hot-line:

1(833)816-6558 Email: techsupport@rockspace cc Service Time: EST 9:00-17:00 PDT 06:00-14:00 from

Monday Friday Need FREE technical A1ihk47ftYL m media-amazon images l

Quick Installation Guide **AC750/AC1200** Dual Band Wi-Fi Extender Model No.

RSD0607/ Model No. RSD0608 Need FREE technical support Scan the QR code or

visit <https://rockspace. afterservice. vip> 24/7 Online After-sales Service Hot-line: 1

833 816-6558 Email: techsupport rockspace.cc Service Time: E...

lang:en **score:37** filesize: 1.45 M page_count: 2 document date: 2021-05-20

[\[pdf\]](#) Quick Start Guide Guide

AC750 1200 Wifi Quick Start Guide Power LED Blinking The extender is booting Method 2:

Connect to an Existing WiFi Network with WPS< b> You can use 2 if your router has a button (possible

icons of button: or) Otherwise 1 Place the Extender and Apply in same room AC750-1200 Wifi rockspace

cc pub download AC750 AC1200 User RockSpace After connection with client device established setup

page will automatically pop up If doesn't WPS a us Dual Band Repeater Model: RSD0607 RSD0608

Technical Phone Support: 1(833)816-6558 Service Time: EST: 9:00-17:00 PDT: 06:00-14:00 from PDF

Monday Friday 24hour

Quick Start Guide **AC750/AC1200** Dual Band WiFi Repeater Model:

RSD0607/RSD0608 Technical Phone Support: 1 833 816-6558 Service Time: EST:

9:00-17:00 / PDT: 06:00-14:00,from Monday to Friday 24hour Online After-sales

Service: <https://rockspace. afterservice. vip> The website list above is the ONLY of...

lang:en **score:33** filesize: 2.3 M page_count: 4 document date: 2020-11-24

[\[pdf\]](#) Installation Guide Frequently Asked Questions Guide

rockspace AC750 AC1200 WiFi 20210520 user AC750 1200 Wifi extender Rock Space cc pub |||

Quick Installation Guide **AC750/AC1200** Dual Band Wi-Fi Extender Model No.

RSD0607/ Model No. RSD0608 Need FREE technical support Scan the QR code or

visit <https://rockspace. afterservice. vip> 24/7 Online After-sales Service Hot-line: 1

833 816-6558 Email: techsupport rockspace.cc Service Time: E...

lang:en **score:30** filesize: 1.47 M page_count: 2 document date: 2021-06-25

[\[pdf\]](#) Installation Guide Frequently Asked Questions Guide

rockspace AC750 AC1200 WiFi 20210520 user Quick Installation Guide AC750 Wi Fi Range

Extender AC1200 20220216 v 1644998327 cdn shopify s files 1 0589 7253 7013 |||

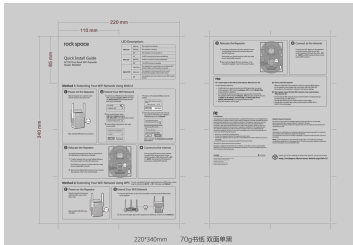
Quick Installation Guide **AC750/AC1200** Dual Band Wi-Fi Extender Model No.

RSD0607/ Model No. RSD0608 Need FREE technical support Scan the QR code or

visit <https://rockspaceworld.com> 24/7 Online After-sales Service Hot-line: 1 833 816-

6558 Email: techsupport rockspace.cc Service Time: EST 10:00-21...

lang:en **score:28** filesize: 1.31 M page_count: 2 document date: 2022-02-16

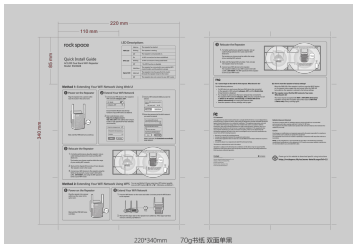


[\[pdf\]](#) User Manual

rockspace AC750 WiFi 20180608 V1 user User manual RSD0607 Shenzhen Renqing Excellent Investment Co Ltd RQZY3402 AC1200 Dual Band WiFi Repeater 2ALT3 2ALT3RQZY3402 rqzy3402

...

lang:en score:16 filesize: 2.95 M page_count: 1 document date: 2018-06-08

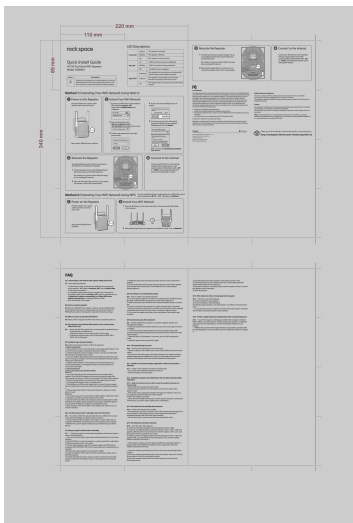


[\[pdf\]](#) User Manual

rockspace AC1200 WiFi 20180608 V1 user User manual RSD0608 Shenzhen Renqing Excellent Investment Co Ltd RQZY3402 Dual Band WiFi Repeater AC750 2ALT3 2ALT3RQZY3402 rqzy3402

...

lang:en score:16 filesize: 2.97 M page_count: 1 document date: 2018-06-08



[\[pdf\]](#) Installation Guide Guide

rockspace AC750 WiFi Extender Quick Install Guide user Title Author Created Date 12 13 2019 11 01 49 AM C1LGaXGoZ7S images na ssl amazon I

...

lang:en score:11 filesize: 4.32 M page_count: 1 document date: 2019-12-13