

## SMONET SMUS-W843M1T-XM-A

# SMONET 1080P 8-Channel Wireless Security Camera System User Manual

Model: SMUS-W843M1T-XM-A

## INTRODUCTION

---

This manual provides detailed instructions for the installation, operation, and maintenance of your SMONET 1080P 8-Channel Wireless Security Camera System. Please read this manual thoroughly before using the product to ensure proper setup and functionality. This system is designed for both indoor and outdoor surveillance, offering 24/7 video recording with 1080P resolution cameras and a pre-installed 1TB HDD.

## PACKAGE CONTENTS

---

Verify that all components are present in your package:

- 1x 8-Channel Wireless NVR (with pre-installed 1TB HDD)
- 4x 1080P Wireless IP Cameras
- 1x NVR Power Adapter
- 4x Camera Power Adapters
- 1x USB Mouse
- 1x Ethernet Cable
- Mounting Screw Kits
- User Manual (this document)



*Image: Overview of the SMONET Wireless Security Camera System components.*

## SETUP INSTRUCTIONS

---

### 1. Initial Connection (Plug & Play)

The cameras and NVR are pre-matched at the factory, allowing for a true plug-and-play setup. No complex pairing is required for initial operation.

1. **Connect NVR:** Connect the NVR to a power outlet using its dedicated power adapter.
2. **Connect Cameras:** Connect each camera to a power outlet using its dedicated power adapter. Ensure the camera power cable (6.56 feet) is sufficient for your chosen location.
3. **Connect Monitor:** Connect the NVR to a PC monitor or TV using an HDMI or VGA cable.
4. **Connect Mouse:** Plug the USB mouse into the NVR's USB port for system navigation.
5. **Power On:** Once all connections are made, power on the NVR and cameras. Video feeds should appear on the connected monitor within minutes.

## True Plug & Play



## Up to 8 Cameras



Image: Simplified diagram of the system's plug-and-play setup.

## 2. System Connection Diagram

## System Connection



Image: NVR system connection ports and peripheral connections.

### 3. Camera Placement and Mounting

The cameras are designed for both indoor and outdoor use with an IP66 waterproof metal housing. They can be ceiling or wall-mounted. Consider the following for optimal placement:

- **Power Source:** Each camera requires a continuous power supply. Ensure a power outlet is accessible within 6.56 feet of the camera's intended location.
- **Wireless Signal:** The cameras connect to the NVR via their own 2.4GHz wireless signal, not your home Wi-Fi. Position cameras within range of the NVR for stable connectivity.
- **Viewing Angle:** The cameras offer a 90-degree viewing angle. Aim them to cover critical areas.



## Easy to Install

Can be Used in Multiple Scenes



Ceiling Mountable



Wall Mountable



House



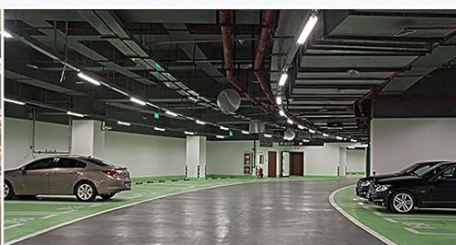
School



Warehouse



Supermarket



Garage



Office

*Image: Examples of camera installation and suitable environments.*

The smonet logo, featuring the word "smonet" in a blue, lowercase, sans-serif font.

*Image: Example floor plan for camera setup.*

## OPERATING INSTRUCTIONS

### 1. Local Viewing and Recording

After initial setup, the system will automatically begin 24/7 recording to the pre-installed 1TB hard drive. You can view live feeds and playback recorded video directly on the monitor connected to the NVR.

- **Navigation:** Use the USB mouse to navigate the NVR's on-screen interface.
- **Playback:** Access recorded footage through the NVR's menu. The 1TB HDD can store over 15 days of continuous video for 4 cameras due to H.265+ video compression.
- **Audio Recording:** Cameras are equipped with one-way audio recording, allowing you to listen to the environment around the camera.



*Image: One-way audio feature demonstration.*

## 2. Remote Access and Mobile App

For remote viewing and advanced features, connect the NVR to your router via an Ethernet cable. Then, download the free "XMeye Pro" app on your smartphone or tablet (iOS/Android).

1. **App Download:** Search for "XMeye Pro" in your device's app store.
2. **Device Pairing:** Follow the in-app instructions to add your NVR system. This typically involves scanning a QR code displayed on the NVR's monitor.
3. **Remote Features:** The app allows for live video preview, recording, synchronized playback, backup, AI human



detection, and email alarms from anywhere with an internet connection.



*Image: Remote viewing across various devices.*

### 3. AI Human Detection and Alerts

The system features AI human detection to minimize false alarms. You can configure monitoring areas and alert preferences within the NVR settings or the mobile app.

- **Motion Detection:** The system detects general motion.
- **AI Human Detection:** Specifically identifies human shapes, reducing alerts from pets, vehicles, or environmental changes.
- **Alerts:** Receive email alerts or app notifications when human motion is detected in designated areas.

# AI Human Detection & Email Alert



Image: AI Human Detection and mobile alert notifications.

## MAINTENANCE

- **Camera Cleaning:** Periodically clean the camera lenses with a soft, damp cloth to ensure clear image quality. Avoid abrasive cleaners.
- **Environmental Protection:** The cameras are IP66 waterproof, suitable for outdoor use in temperatures ranging from -20°C to +55°C (14°F to 131°F). Ensure proper mounting to prevent water accumulation on the lens or housing.
- **Hard Drive Management:** The H.265+ video compression technology optimizes storage space. The 1TB HDD provides ample storage, but regular review and backup of critical footage are recommended. The system will automatically overwrite the oldest footage when the hard drive is full.
- **Firmware Updates:** Check the SMONET official website or contact support for any available firmware updates for your NVR and cameras to ensure optimal performance and security.





*Image: IP66 waterproof camera with day and night vision examples.*

## TROUBLESHOOTING

If you encounter issues with your SMONET security system, refer to the following common troubleshooting steps:

- **No Video Display:**

- Ensure the NVR and all cameras are properly powered on.
- Check HDMI/VGA cable connections between the NVR and monitor.
- Verify that the correct input source is selected on your monitor/TV.

- **Camera Offline:**

- Confirm the camera's power adapter is securely connected and receiving power.
- Check the wireless signal strength between the camera and NVR. Relocate the camera or NVR if the signal is weak.

- Restart the camera and NVR.

• **Remote Access Issues:**

- Ensure the NVR is connected to your router via an Ethernet cable.
- Verify your smartphone has a stable internet connection.
- Check if the "XMeye Pro" app is updated to the latest version.
- Confirm the NVR is correctly added and online within the app.

• **NVR Software Freezing:**

- Restart the NVR.
- Ensure the NVR has adequate ventilation to prevent overheating.
- If persistent, consider performing a factory reset (consult support for instructions to avoid data loss).

• **False Motion Alerts:**

- Adjust the sensitivity settings for motion detection in the NVR or app.
- Utilize the AI Human Detection feature and configure specific monitoring zones to exclude areas with frequent non-human movement.

For further assistance, please contact SMONET customer support.

SPECIFICATIONS

Feature	Detail
Brand	SMONET
Model Number	SMUS-W843M1T-XM-A
Connectivity Technology	Wired, Wireless
Video Capture Resolution	1080p (2MP)
Special Features	App Control, Audio Recording, Human Detection, Night Vision, Video Recording
Number of Channels	8 (NVR supports up to 8 cameras)
Memory Storage Capacity	1 TB HDD (Pre-installed)
Color	White
Item Dimensions (L x W x H)	13.5 x 8.5 x 12 inches
Compatible Devices	Smartphones (iOS/Android), Personal Computers (VMS software), TV/Monitor
Low Light Technology	Night Vision
Night Vision Range	Up to 65 Feet
Frame Rate	30 fps
Recording Mode	24/7 Continuous, Motion-activated, Human Detection
Hardware Interface	Ethernet, VGA, HDMI, USB

Feature	Detail
Lens Type	Fixed
Viewing Angle	90 Degrees
Video Compression	H.265+
Operating Temperature	-20°C~+55°C (14°F~131°F)

## WARRANTY AND SUPPORT

### Warranty Information

Specific warranty details for the SMONET 1080P 8-Channel Wireless Security Camera System are not provided in this manual. Please refer to the product packaging, the official SMONET website, or contact SMONET customer service for comprehensive warranty terms and conditions.

### Customer Support


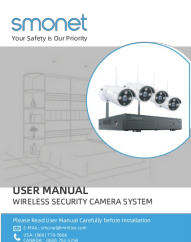
For technical support, troubleshooting assistance, or any inquiries regarding your SMONET product, please contact SMONET customer service. They can provide guidance on software (e.g., "VMS" for PC) and address specific product issues.

- **Mobile App:** "XMeye Pro" (available on iOS and Android app stores)
- **PC Software:** "VMS" (contact SMONET support for download and installation)
- **Contact:** Refer to the SMONET official website or product packaging for the most current customer service contact information (email, phone, or chat).



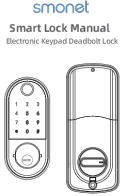



© 2025 SMONET. All rights reserved.

### Related Documents - SMUS-W843M1T-XM-A

	<p><a href="#">SMONET Wireless Security Camera System User Manual</a></p> <p>Comprehensive user manual for the SMONET wireless security camera system, detailing setup, features, and operation of 8CH WiFi NVR kits with 3MP/5MP IP cameras, night vision, and mobile app access.</p>
	<p><a href="#">Smonet Wireless Security Camera System User Manual</a></p> <p>User manual for the Smonet Wireless Security Camera System, covering installation, setup, recording, playback, and troubleshooting.</p>



 <p>SMONET Wireless Network Video Recorder System User Manual</p> <p>4CH/8CH NVR Kits</p> <p>V1.00.000</p>	<p><a href="#">SMONET Wireless Network Video Recorder System User Manual</a></p> <p>User manual for the SMONET Wireless Network Video Recorder System, detailing installation, setup, network configuration, remote viewing via smartphone and PC, video recording and playback, and frequently asked questions for 4CH/8CH NVR kits supporting 720P/960P/1080P cameras.</p>
 <p>Smart Lock Manual Electronic Keypad Deadbolt Lock</p> <p>Version: SMUS-GS002</p>	<p><a href="#">SMONET SMUS-GS002 Smart Lock Manual: Installation &amp; Operation Guide</a></p> <p>Comprehensive user manual for the SMONET SMUS-GS002 Electronic Keypad Deadbolt Smart Lock. Includes installation steps, operation instructions, app pairing, and troubleshooting.</p>
 <p>smonet Smart Lock Manual Electronic Keypad Deadbolt Lock</p>	<p><a href="#">Smonet Smart Lock Manual: Electronic Keypad Deadbolt Lock</a></p> <p>Comprehensive manual for the Smonet Electronic Keypad Deadbolt Lock, covering installation, smart features, operation, and troubleshooting.</p>
 <p>Smart Lock Manual Electronic Keypad Deadbolt Lock</p>	<p><a href="#">Smonet Smart Lock Y1: Electronic Keypad Deadbolt Lock Manual</a></p> <p>Comprehensive installation, app, and operation guide for the Smonet Smart Lock Y1 electronic keypad deadbolt. Learn how to install, set up the app, manage users, and troubleshoot.</p>