



Manuals.plus /

› UpStart Components /

› Instruction Manual for UpStart Components 3363892 Washing Machine Pump Replacement

UpStart Components AP-WP3363892-DL495

Instruction Manual for UpStart Components 3363892 Washing Machine Pump

Model: AP-WP3363892-DL495

PRODUCT OVERVIEW

This manual provides essential information for the installation, operation, maintenance, and troubleshooting of the UpStart Components 3363892 Washing Machine Pump. This pump is designed as a replacement part compatible with KitchenAid KAWS750LT0 Washer and other models requiring WP3363892 Washer Drain Pump.

Important Note:

This is an UpStart Components Brand replacement part, NOT an OEM product. All mentions of brand names or model descriptions are made strictly to illustrate compatibility. All brand names and logos are registered trademarks of their respective owners. This product is not affiliated with any brands and is not covered under any warranties offered by the original manufacturers. Any warranties for this product are offered solely by UpStart Components.

SETUP AND INSTALLATION

Proper installation is crucial for the optimal performance and longevity of your washing machine pump. Please follow these guidelines carefully.

- **Compatibility Check:** Before installation, ensure this pump is the correct replacement for your specific washing machine model. Verify your original part number against WP3363892, AP6008110, 3363892, 3352496, PS11741242, or WP3363892VP.
- **Safety First:** Always disconnect power to the washing machine before attempting any repair or installation. Turn off the circuit breaker or unplug the appliance from the wall outlet.
- **Drain Water:** Ensure all water is drained from the washing machine tub and hoses before removing the old pump. Have towels and a bucket ready for any residual water.
- **Accessing the Pump:** Depending on your washing machine model, you may need to tilt the machine, remove the front panel, or access from the bottom to reach the drain pump. Refer to your washing

machine's specific service manual for detailed access instructions.

- **Removal of Old Pump:** Carefully disconnect the hoses and electrical connections from the old pump. Note their positions for reinstallation. Remove any mounting screws or clips securing the old pump.
- **Installation of New Pump:** Position the new UpStart Components pump in the same location as the old one. Secure it with the appropriate mounting hardware. Reconnect the hoses, ensuring they are clamped tightly to prevent leaks. Reattach the electrical connections.
- **Post-Installation Check:** Once installed, double-check all connections for tightness. Restore power to the washing machine and run a short cycle (e.g., rinse and spin) to check for leaks and proper drainage.



Figure 1: Top view of the UpStart Components 3363892 Washing Machine Pump. This image displays the overall shape and the two hose connection points, along with the central impeller area.

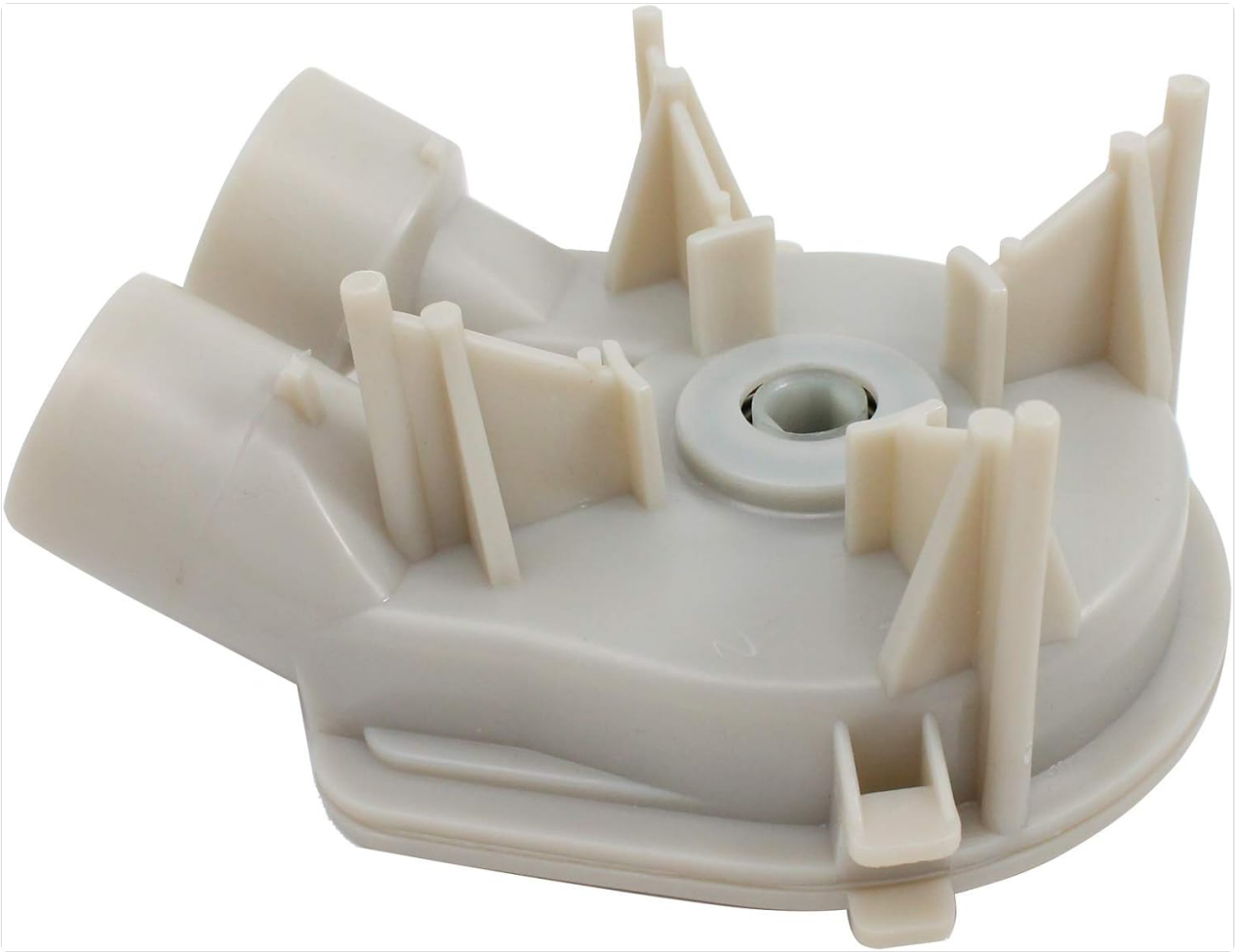


Figure 2: Bottom view of the UpStart Components 3363892 Washing Machine Pump. This perspective highlights the structural supports and the area where the motor connects to drive the pump impeller.

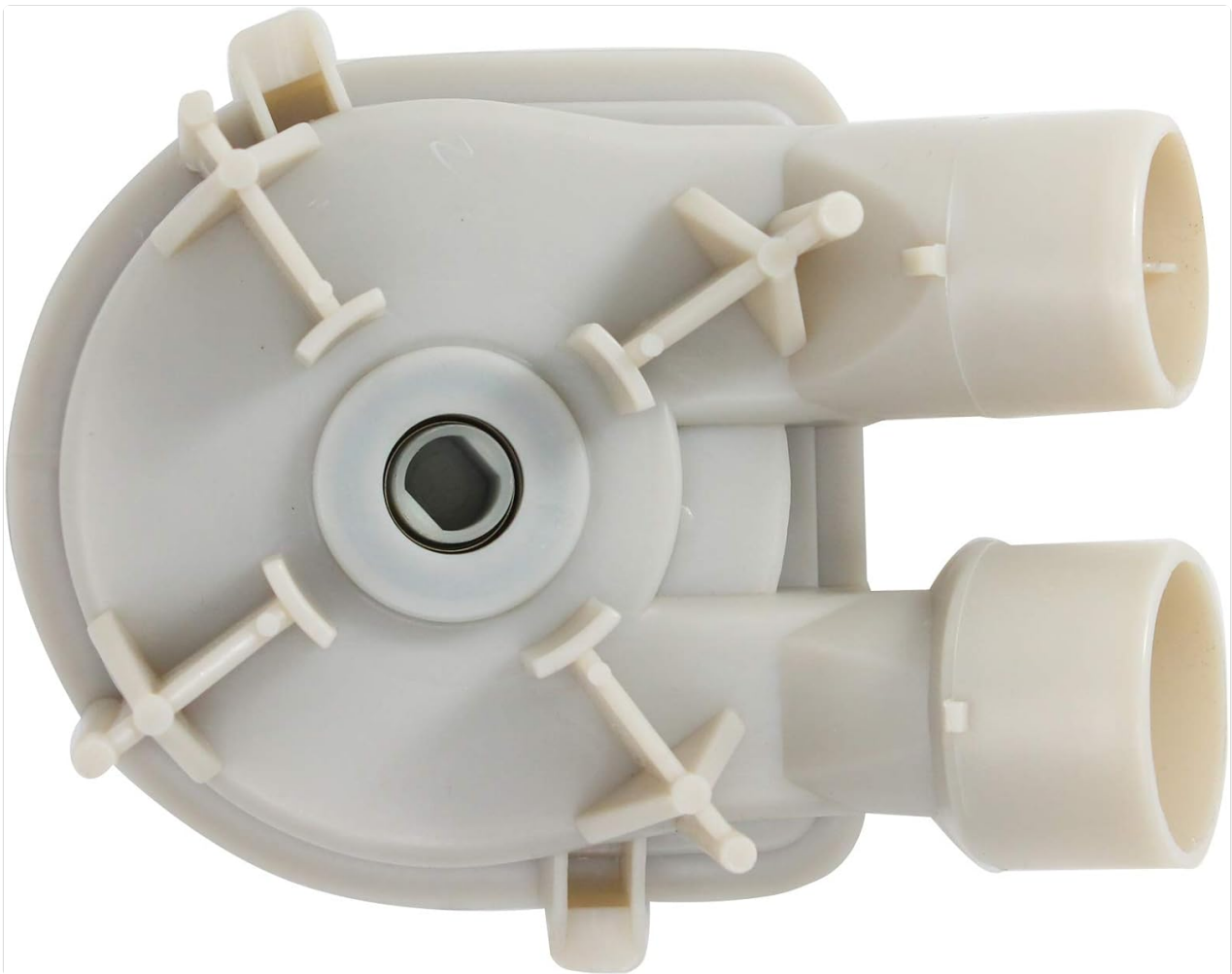


Figure 3: Side view of the UpStart Components 3363892 Washing Machine Pump. This view illustrates the compact design and the orientation of the two hose ports.

OPERATING INSTRUCTIONS

The 3363892 Washing Machine Pump operates automatically as part of your washing machine's drain cycle. No direct user interaction is required for its operation once correctly installed.

- Ensure the washing machine is properly connected to a power source and water supply.
- Select the desired wash cycle on your washing machine.
- The pump will activate during the drain and spin cycles to remove water from the wash tub.
- Listen for normal operating sounds. Excessive noise or lack of drainage may indicate an issue.

MAINTENANCE

Regular maintenance of your washing machine, including the drain system, can extend the life of the pump and prevent issues.

- **Filter Cleaning:** Many washing machines have a drain pump filter that should be cleaned periodically

(e.g., every few months) to prevent lint, debris, and small objects from clogging the pump. Refer to your washing machine's user manual for filter location and cleaning instructions.

- **Hose Inspection:** Periodically inspect the drain hoses for kinks, blockages, or damage. Ensure they are securely attached to the pump and the drain standpipe.
- **Avoid Overloading:** Overloading the washing machine can put undue stress on the pump and other components.
- **Foreign Objects:** Always check pockets before washing to prevent coins, keys, or other small items from entering the drain system and damaging the pump impeller.

TROUBLESHOOTING

If you experience issues with your washing machine's drainage, consider the following common troubleshooting steps before seeking professional assistance.

Problem	Possible Cause	Solution
Washing machine not draining	Clogged drain pump filter or hose; Kinked drain hose; Faulty pump motor; Electrical issue.	Clean drain pump filter. Check and clear drain hose for blockages or kinks. Verify electrical connections to the pump. If pump motor is faulty, replacement may be necessary.
Loud noise during drain cycle	Debris in pump impeller; Worn pump bearings; Loose pump mounting.	Disconnect power and inspect pump impeller for foreign objects. If noise persists, pump may need replacement. Ensure pump is securely mounted.
Water leaking from pump area	Loose hose clamps; Damaged pump housing or seals.	Tighten hose clamps. Inspect pump housing and seals for cracks or damage. If damaged, pump replacement is required.

If these troubleshooting steps do not resolve the issue, it is recommended to consult a qualified appliance technician.

SPECIFICATIONS

Attribute	Detail
Brand	UpStart Components
Model Number	AP-WP3363892-DL495
Compatible Part Numbers	WP3363892, AP6008110, 3363892, 3352496, PS11741242, WP3363892VP
Material	Stainless Steel (internal components, likely)
Color	White
Power Source	Electric
First Available Date	December 12, 2019

WARRANTY AND SUPPORT

This product is an UpStart Components Brand replacement part. Any warranties for this product are offered solely by UpStart Components.

For specific warranty details or support inquiries, please refer to the documentation provided with your purchase or contact UpStart Components directly through their official channels. This product is not affiliated with any original equipment manufacturers (OEMs) and is not covered under their warranties.

For further assistance, please visit the [UpStart Components brand page on Amazon](#) or contact your seller.