

WAVLINK WL-UG39DK7

WAVLINK WL-UG39DK7 Universal USB 3.0/USB C Docking Station User Manual

Model: WL-UG39DK7

1. INTRODUCTION

The WAVLINK WL-UG39DK7 is a versatile universal docking station designed to expand the connectivity of your laptop or PC. It provides multiple video outputs, USB ports, and network access through a single USB 3.0 or USB-C connection, enhancing your workspace productivity.

2. PRODUCT OVERVIEW

The WL-UG39DK7 docking station offers a comprehensive set of ports to connect various peripherals and external displays to your computer.

Key Features:

- **Dual Video Output:** Integrated HDMI and DVI outputs, each supporting resolutions up to 1920x1200 @ 60Hz. The HDMI port supports resolutions up to 2560x1440 @ 50Hz with an HDMI display. The DVI/VGA port supports up to 2048x1152 / 1920x1200 @ 60Hz. DVI to VGA and DVI to HDMI adapters are included.
- **Super Speed USB 3.0:** Two USB 3.0 ports offering data transfer speeds up to 5 Gbps, backward compatible with USB 2.0/1.1.
- **Additional USB Ports:** Four USB 2.0 ports for connecting various USB devices.
- **Gigabit Ethernet:** An RJ-45 10/100/1000Mbps Ethernet port for a fast and stable wired network connection.
- **Audio Connectivity:** Separate audio output and microphone input jacks.
- **Built-in Protection:** Integrated surge protection for connected devices.

Port Layout:

Refer to the image below for a detailed view of the docking station's ports.

5K 4-Display



Image: Front and rear view of the WAVLINK WL-UG39DK7 docking station, highlighting all available ports including USB 3.0, USB-B, HDMI, DVI, Ethernet, Audio, and DC Power input.



Image: Close-up of the USB 3.0 ports on the docking station, illustrating their high-speed data transfer capability of 5Gbps.



Image: Detail of the RJ45 Gigabit Ethernet port on the docking station, providing 1000Mbps network connectivity.

3. SETUP INSTRUCTIONS

3.1 Package Contents:

Before you begin, ensure all items are present in the package:

- WAVLINK WL-UG39DK7 Docking Station
- Power Adapter
- USB 3.0 Type-A to Type-B Cable
- DVI to VGA Adapter
- DVI to HDMI Adapter
- Driver CD (or download from WAVLINK website)
- Quick Start Guide



Image: Contents of the WAVLINK WL-UG39DK7 docking station package, including the dock, power adapter, USB cable, DVI adapters, and documentation.

3.2 Driver Installation:

1. **For Windows:** Insert the driver CD or download the latest DisplayLink drivers from the official WAVLINK support website (www.wavlink.com). Run the installer and follow the on-screen instructions. Restart your computer if prompted.
2. **For Mac OS:** Download the latest DisplayLink drivers from the official WAVLINK support website. Install the drivers and follow any specific instructions for Mac OS, especially regarding security and privacy settings for

screen recording. Restart your Mac if prompted.

3.3 Hardware Connection:

1. Connect the power adapter to the docking station and plug it into a power outlet.
2. Connect the USB 3.0 Type-A to Type-B cable from the docking station's USB-B port to an available USB 3.0 or USB-C port on your laptop/PC. If using USB-C, ensure your laptop supports USB 3.0 over USB-C.
3. Connect your external monitors to the HDMI and/or DVI ports on the docking station. Use the provided DVI to VGA or DVI to HDMI adapters if necessary.
4. Connect your USB peripherals (keyboard, mouse, external drives) to the available USB 3.0 and USB 2.0 ports.
5. For wired network access, connect an Ethernet cable from your router/modem to the Gigabit Ethernet port on the docking station.
6. Connect speakers/headphones to the audio output and a microphone to the microphone input jack if desired.



Image: Diagram showing the WAVLINK WL-UG39DK7 docking station connected to a laptop and multiple monitors using HDMI, DVI, and VGA adapters.

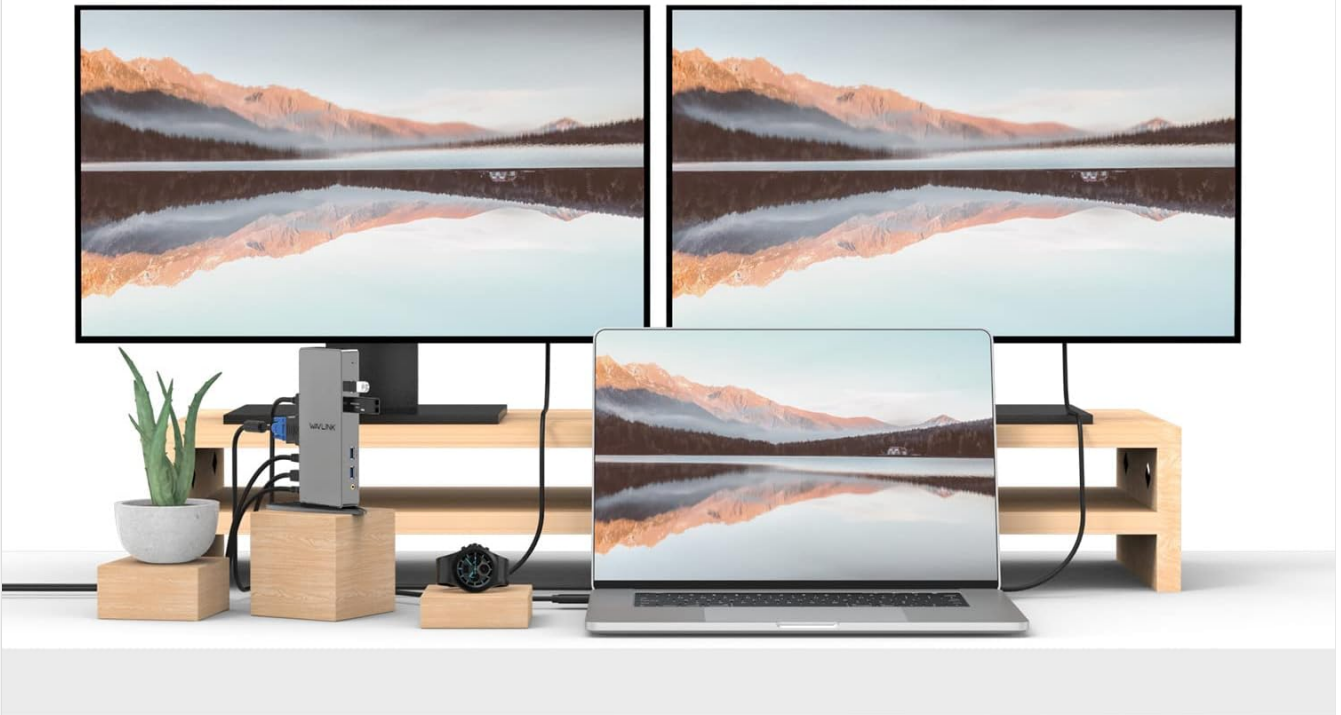
4. OPERATING INSTRUCTIONS

4.1 Display Modes:

Once connected, your operating system should detect the external displays. You can configure display modes through your system's display settings:

- **Extend Display:** Each monitor displays a different part of your desktop, allowing for a larger workspace.
- **Mirror Display (Duplicate):** All monitors display the same content as your primary screen.
- **Primary or Replace Mode:** Use only one external monitor or replace the laptop screen with an external one.

With dual HD displays up to 1920x1200@60Hz



Includes a DVI to VGA adapter
and a DVI to HDMI adapter



Image: Illustrations of different display modes: Primary or Replace, Mirror Display, and Extend Display, showing how the docking station can manage multiple screens.

4.2 USB and Network Usage:

The USB ports and Gigabit Ethernet port function automatically once the drivers are installed and the docking station is connected to your computer. For optimal performance, ensure you are using USB 3.0 ports for high-speed devices.

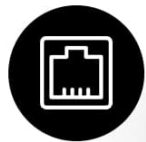
High Speed USB 3.0

Transfer Large Files in Seconds

10 X faster
USB 3.0 : 5Gbps
USB 2.0 : 480Mbps

6
USB-A
Ports

5Gbps



RJ45 1000Mbps

Gigabit Ethernet



Image: Visual representation of high-speed USB 3.0 data transfer (5Gbps) and Gigabit Ethernet (1000Mbps) capabilities of the docking station.

5. SYSTEM COMPATIBILITY

The WAVLINK WL-UG39DK7 docking station is compatible with a range of operating systems:

Supported Systems:

- Windows 11, 10, 8.1, 8, 7, XP
- Mac OS 10.6 or later (limited support; refer to DisplayLink website for details)
- Android v5.0 (Lollipop) or later
- Chrome OS R55 build onwards
- Ubuntu 16.04 onwards

Important Notes for Mac OS Users:

This docking station currently does not support Mac OS 10.13.4 or later. It is recommended to remain on Mac OS

10.13.3 or earlier for full functionality. Please check the DisplayLink website for the latest driver updates and compatibility information.

Unsupported Systems:

- Linux/Unix systems (generally not supported)
- Mac OS 10.6 older

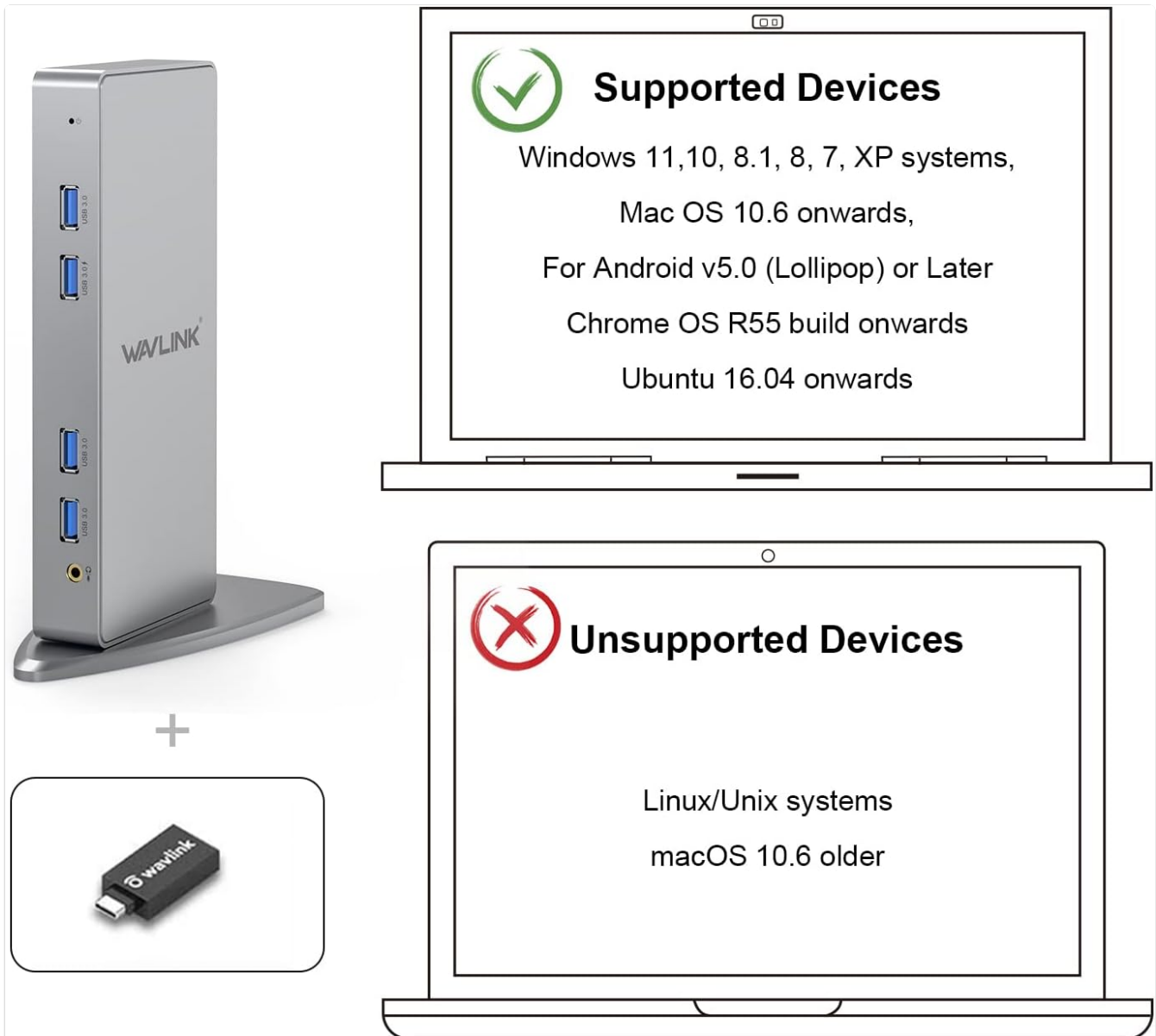


Image: Graphic illustrating the supported operating systems (Windows, Mac OS 10.6+, Android, Chrome OS, Ubuntu) and unsupported systems (Linux/Unix, older Mac OS) for the docking station.

6. MAINTENANCE

To ensure the longevity and optimal performance of your WAVLINK WL-UG39DK7 docking station, follow these maintenance guidelines:

- **Cleaning:** Use a soft, dry cloth to clean the exterior of the docking station. Avoid using liquid cleaners or solvents.
- **Driver Updates:** Regularly check the official WAVLINK or DisplayLink website for the latest driver updates to ensure compatibility and performance improvements.
- **Ventilation:** Ensure the docking station is placed in a well-ventilated area to prevent overheating. Do not block the ventilation holes.

- **Cable Management:** Keep cables organized and free from kinks or excessive bending to prevent damage.
- **Storage:** When not in use for extended periods, store the docking station in a cool, dry place.

7. TROUBLESHOOTING

If you encounter issues with your WAVLINK WL-UG39DK7 docking station, refer to the following common troubleshooting steps:

7.1 No Display on External Monitors:

- Ensure the docking station is powered on and connected to your computer via the USB cable.
- Verify that the external monitors are powered on and correctly connected to the docking station's video ports (HDMI, DVI, or VGA via adapter).
- Check your computer's display settings to ensure the external monitors are detected and configured for the desired display mode (Extend, Mirror).
- Reinstall the DisplayLink drivers from the official WAVLINK website.
- Try different video cables or adapters if available.

7.2 USB Devices Not Working:

- Ensure the docking station is properly connected to your computer.
- Try connecting the USB device to a different port on the docking station.
- Connect the USB device directly to your computer to verify its functionality.
- Ensure the DisplayLink drivers are correctly installed.

7.3 Network Connection Issues:

- Verify that the Ethernet cable is securely connected to both the docking station and your router/modem.
- Check the network status on your computer.
- Ensure the DisplayLink drivers are correctly installed, as they manage the Ethernet functionality.
- Try a different Ethernet cable.

7.4 General Performance Issues:

- Ensure your computer's operating system and graphics drivers are up to date.
- Avoid using the docking station for demanding applications like gaming, as it is optimized for productivity and web software.
- Do not combine this docking station with other non-DisplayLink USB adapters, as this can cause conflicts.

8. SPECIFICATIONS

Feature	Specification
Brand	WAVLINK
Model Number	WL-UG39DK7
Hardware Interface	USB 3.0 Type B
Compatible Devices	Laptop

Feature	Specification
Total USB Ports	6 (2x USB 3.0, 4x USB 2.0)
Video Outputs	1x HDMI, 1x DVI (with DVI to VGA and DVI to HDMI adapters)
Max Resolution (HDMI)	2560x1440 @ 50Hz
Max Resolution (DVI/VGA)	2048x1152 / 1920x1200 @ 60Hz
Ethernet Port	RJ-45 Gigabit Ethernet (10/100/1000Mbps)
Audio Ports	1x Audio Out, 1x Microphone In
Product Dimensions (L x W x H)	23 x 16 x 12 centimeters
Item Weight	1.2 Kilograms
Power Input	130 Watts

9. WARRANTY AND SUPPORT

The WAVLINK WL-UG39DK7 Universal USB 3.0/USB C Docking Station is covered by a **24-month limited warranty** from the date of purchase.

For technical support, driver downloads, or warranty inquiries, please visit the official WAVLINK support website or contact their customer service directly. Keep your purchase receipt for warranty claims.

WAVLINK Official Website: www.wavlink.com