

Manuals+

[Q & A](#) | [Deep Search](#) | [Upload](#)

Manuals.plus /

- › [ZEEHOO](#) /
- › ZEEHOO PowerDrive Cc54 Wireless Car Charger User Manual

ZEEHOO PowerDrive Cc54

ZEEHOO PowerDrive Cc54 Wireless Car Charger User Manual

Model: PowerDrive Cc54

INTRODUCTION

Thank you for choosing the ZEEHOO PowerDrive Cc54 Wireless Car Charger. This device combines 15W fast wireless charging with an automatic clamping car phone mount, providing a convenient and secure solution for charging your smartphone on the go. This manual provides detailed instructions for setup, operation, maintenance, and troubleshooting to ensure optimal performance and safety.



Image: ZEEHOO PowerDrive Cc54 Wireless Car Charger, Grey model.

PACKAGE CONTENTS

Please check the box for the following items:

- 1 x Wireless Car Charger
- 1 x Strong Suction Cup Mount
- 1 x Dashboard Mounting Disk
- 1 x Double-Lock Air Vent Clip
- 1 x USB A to USB C Charging Cable (1M/3.28FT)
- 1 x User Manual

PRODUCT FEATURES

- **Smarter Automatic Sensor Design:** Automatic opening and clamping for easy one-hand operation.
- **15W Fast Wireless Charging:** Supports Max 15W for LG G7 ThinQ/V30+, Max 10W for Samsung S22/S21/S20/Note series, Max 7.5W for iPhone 14/13/12/11/X/8 series, and 5W for other Qi-Enabled Phones. (QC 3.0 car charger adapter required for fast charging, not included).

- **Built-in Super Capacitor, Power-Off Delay:** Allows 2-3 presses of the release buttons to clamp or release your phone after the car is shut off.
- **Strong Suction Cup & Adjustable Viewing:** Multiple installation options (dashboard, table) with 360-degree rotation for optimal viewing.
- **Safe and Easy to Use:** Upgraded release button ensures phone security while driving.
- **Intelligent Charging Indicator:** Visual feedback on charging status.
- **Mechanical Release Button:** Provides reliable phone release.
- **Adjustable Bottom Tray:** Accommodates various phone sizes.
- **Anti-Fall Vent Clip:** Secure attachment to air vents.

15W Fast Charger

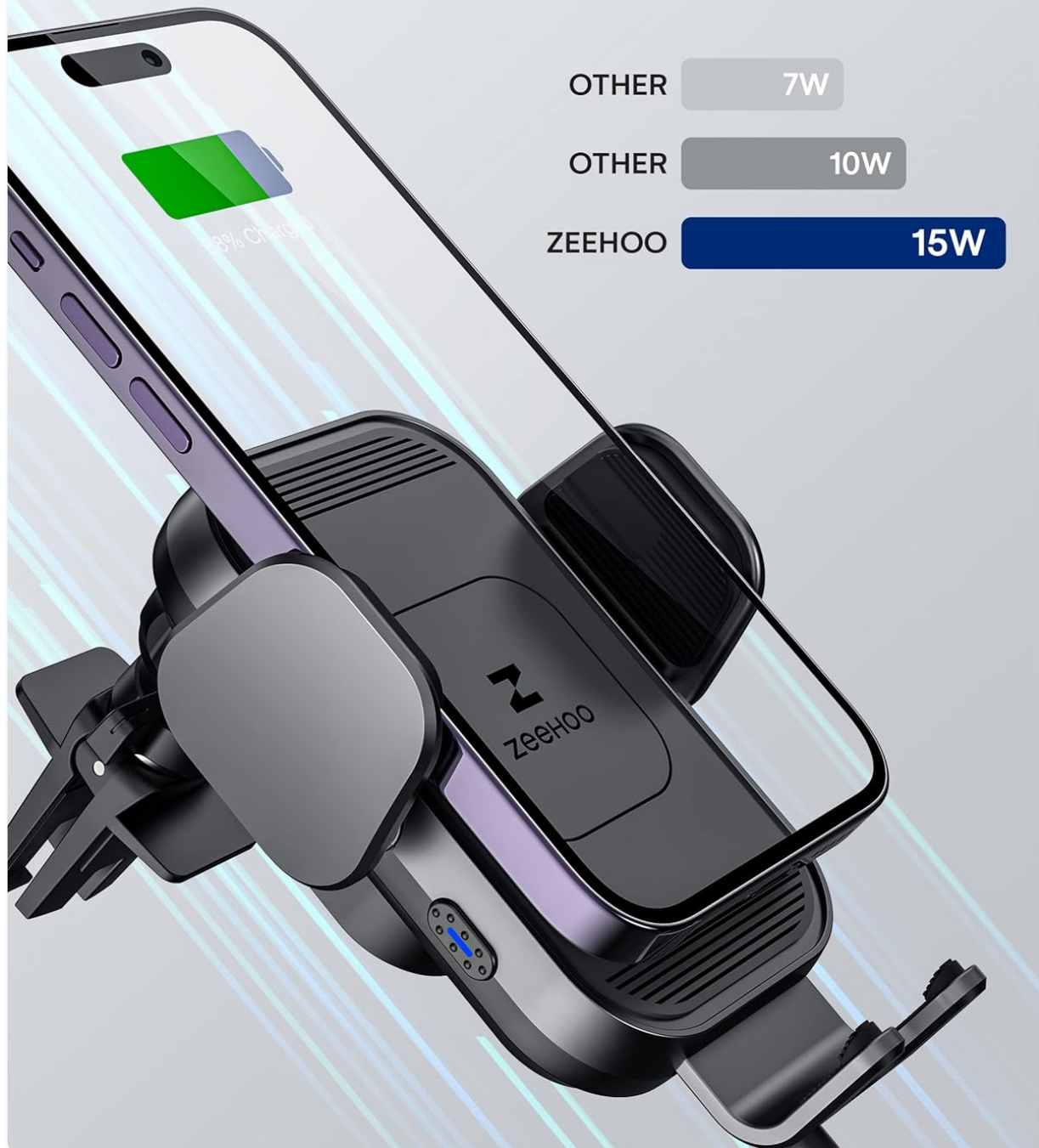


Image: Comparison of 15W fast charging with other chargers.

SETUP INSTRUCTIONS

A. Suction Cup Mount Installation (Dashboard/Windshield)

1. Unscrew the nut from the suction cup mount, then let the ball joint pass through the nut.
2. Screw the nut back onto the mount, but do not fully tighten it yet.
3. Clean the dashboard surface thoroughly where you intend to install the mount.
4. If your dashboard surface is rough or not smooth, install the provided dashboard mounting disk. Allow 24 hours for the adhesive to set before use.
5. Push the suction cup firmly onto the cleaned surface (or mounting disk) and press the locking lever down to secure it.
6. Adjust the bracket arm to your desired viewing angle and tighten the buckle to lock it in place.



Image: Step-by-step guide for installing the suction cup mount on a dashboard.

B. Air Vent Clip Installation

1. Unscrew the nut from the air vent clip, then let the ball joint pass through the nut.
2. Push the ball joint into the round hole on the back of the charger and tighten the nut securely.
3. Open the clip and firmly attach it to your car's air vent.
4. Twist the knob on the clip to lock it onto the vents, ensuring a stable hold.

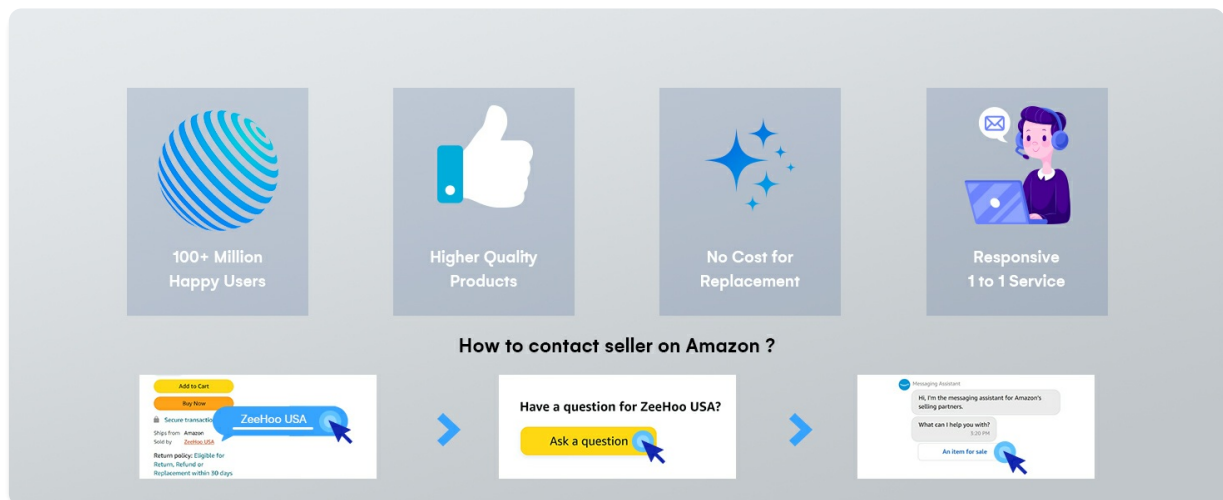


Image: Step-by-step guide for installing the air vent clip mount.

OPERATING INSTRUCTIONS

A. Automatic Clamping and Release

- Once the charger is powered on, the clamps will automatically open.
- Place your Qi-enabled phone into the holder; the clamps will automatically close and firmly secure your phone.
- To release your phone, gently press either of the quick-release buttons located on the sides of the charger. The arms will automatically open.
- The built-in super capacitor allows you to press the release buttons 2-3 times to retrieve your phone even after the car engine is turned off.



Image: Demonstrates the automatic clamping, one-press release, and indicator light functions.

B. Wireless Charging

- Ensure your phone is Qi-enabled for wireless charging.
- For optimal charging, adjust the adjustable bottom tray to align your phone's wireless charging coil with the charger's coil.
- The intelligent charging indicator light will show the charging status (e.g., green for standby, blue for charging, green flashing for foreign object detected).
- For 15W, 10W, or 7.5W fast charging, a QC 3.0 car charger adapter (not included) is required as the power source.



Image: A smartphone being wirelessly charged while mounted in the car charger.

C. Official Product Videos

Your browser does not support the video tag.

Video: Demonstrates the fast wireless charging capability of the ZEEHOO car charger. This video shows a phone being placed into the charger and initiating a fast charge.

Your browser does not support the video tag.

Video: A quick demonstration of the fast wireless charging feature. This video highlights the speed and efficiency of the charger.

COMPATIBILITY

- **Phone Size:** Compatible with smartphones ranging from 4.7 to 6.9 inches.
- **Cases:** Supports rubber cases with a thickness of $\leq 3\text{mm}$.
- **Incompatible:** Avoid using with bulky cases, cases with attachments (e.g., metal plates, pop sockets), or credit cards placed between the phone and charger, as these may interfere with wireless charging.
- **Fast Charging Requirement:** A QC 3.0 car charger adapter (not included) is necessary to achieve 15W, 10W, or 7.5W fast charging speeds.

Wide Compatibility

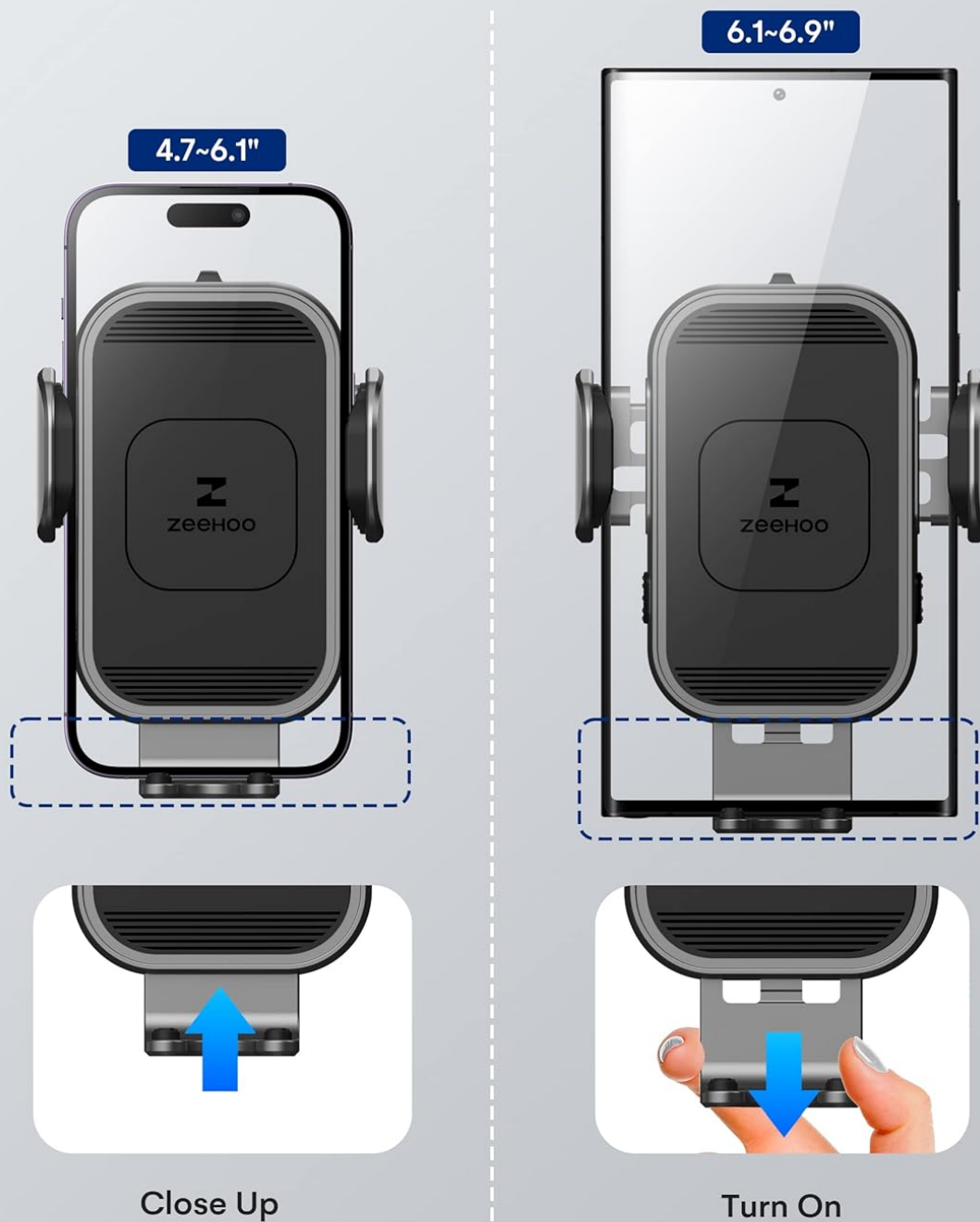


Image: Illustrates the wide compatibility of the charger with different phone sizes (4.7-6.1 inches and 6.1-6.9 inches).

Compatible Accessories



Rubber Cases



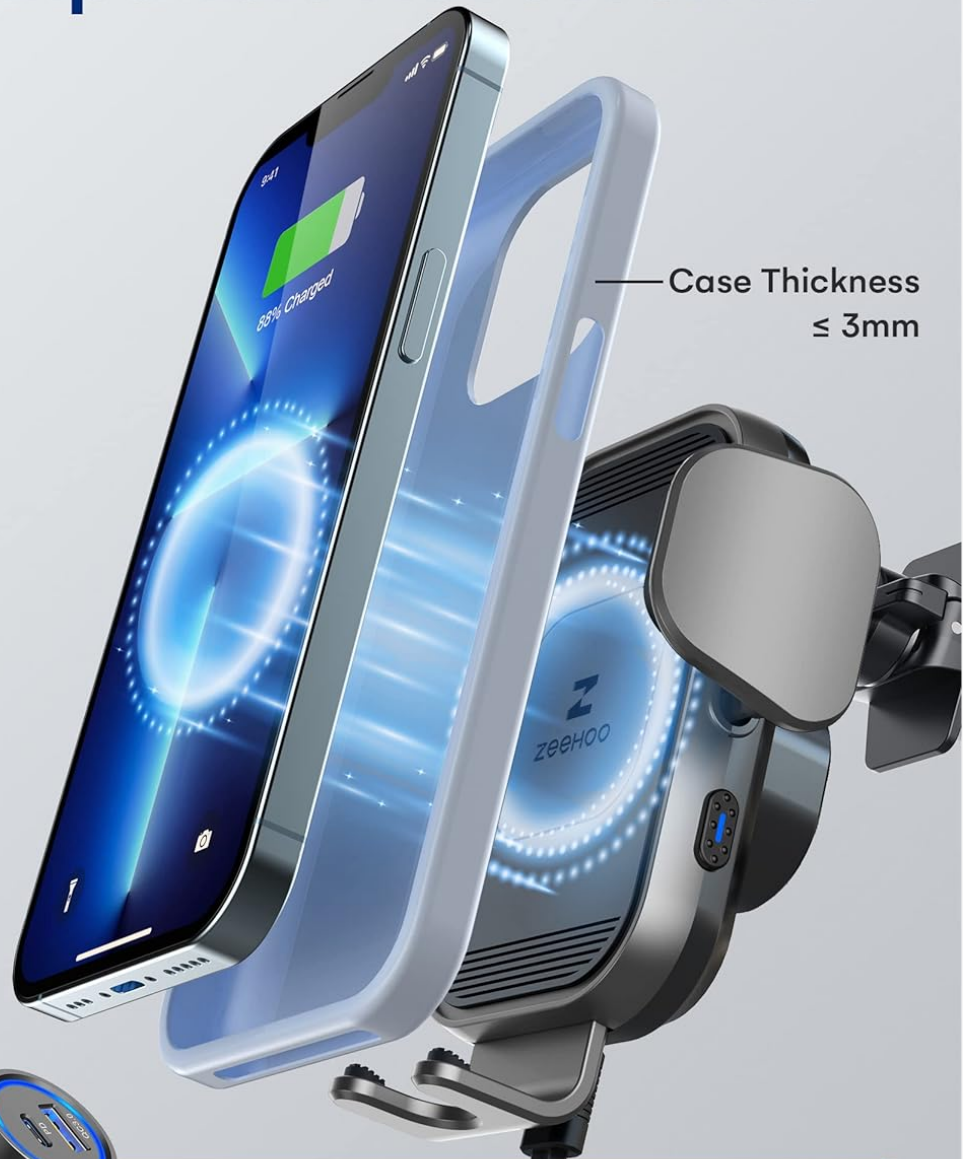
Any other Bulk Cases



Attachments



Credit Cards



Case Thickness
≤ 3mm



QC 3.0 Car Charger (NOT INCLUDED)
is required as its power source for efficient
charging.

Image: Shows which phone cases and accessories are compatible or incompatible with the wireless charger.

SAFETY & PROTECTION

The ZEEHOO PowerDrive Cc54 is equipped with multiple safety features to protect your device and ensure safe operation:

- **Overcurrent Protection:** Prevents damage from excessive current.
- **Overvoltage Protection:** Safeguards against high voltage input.
- **Short Circuit Protection:** Protects against short-circuiting.
- **Over-charge Protection:** Prevents battery damage from overcharging.
- **Overheat Protection:** Manages internal temperature to prevent overheating.

- **Over-temperature Protection:** Ensures safe operating temperatures.

Safety & Stability

-  **Overcurrent Protection**
-  **Overvoltage Protection**
-  **Short Circuit Protection**
-  **Over-charge Protection**
-  **Overheat Protection**
-  **Over-temperature Protection**



Latest Smart Chip



Super Capacitor

Image: Highlights the various safety and stability features, including the smart chip and super capacitor.

MAINTENANCE

To ensure the longevity and optimal performance of your ZEEHOO Wireless Car Charger, follow these simple maintenance guidelines:

- **Cleaning:** Regularly wipe the surface of the charger and mount with a soft, dry cloth to remove dust and debris. Avoid using harsh chemicals or abrasive cleaners.
- **Suction Cup Care:** If using the suction cup mount, periodically clean the suction cup and the mounting surface to maintain strong adhesion. If the suction cup loses stickiness, rinse it with warm water and let it air

dry.

- **Temperature:** Avoid exposing the charger to extreme temperatures (both hot and cold) for extended periods, as this can affect its performance and lifespan.
- **Cable Management:** Ensure the USB-C charging cable is not kinked or pinched, which can lead to damage.

TROUBLESHOOTING

If you encounter any issues with your ZEEHOO Wireless Car Charger, please refer to the following common solutions:

- **Charger Not Powering On:** Ensure the USB-C cable is securely connected to both the charger and a working power source (e.g., car charger adapter). Check if the car's power outlet is functioning.
- **Phone Not Charging:**
 - Verify your phone is Qi-enabled for wireless charging.
 - Adjust the phone's position on the charger to ensure proper coil alignment. The adjustable bottom tray can help with this.
 - Check for any foreign objects (e.g., metal, credit cards) between your phone and the charger.
 - Ensure your phone case is not too thick (>3mm) or contains metal, which can interfere with charging.
 - Confirm that your car charger adapter provides sufficient power (QC 3.0 recommended for fast charging).
- **Automatic Clamping Not Working:** Ensure the charger is powered on. If the clamps are stuck, gently press the release buttons.
- **Mount Not Sticking Securely:**
 - Clean the mounting surface and the suction cup thoroughly.
 - Ensure the locking lever on the suction cup is fully engaged.
 - If using the dashboard mounting disk, ensure it was applied to a clean surface and allowed 24 hours to set.

SPECIFICATIONS

Feature	Detail
Product Dimensions	4.49 x 2.85 x 2.24 inches
Item Weight	11.7 ounces
Model Number	PowerDrive Cc54
Connectivity Technology	Wireless
Input Voltage	12 Volts (DC)
Wattage	15 watts
Total USB Ports	1 (USB Type C)
Color	Grey
Manufacturer	ZeeHoo

WARRANTY & SUPPORT

ZEEHOO offers a **12-month worry-free warranty** for this product, ensuring your satisfaction and peace of mind. Additionally, our customer service team provides a **12-hour response-friendly service** for any inquiries or issues you may have.

How to Contact Seller on Amazon:

1. Go to the product page on Amazon.
2. Click on the seller's name (usually 'ZeeHoo USA') located under the 'Add to Cart' button.
3. On the seller's page, look for a button or link that says 'Ask a question' or 'Contact Seller'.
4. Fill out the contact form with your query, and our team will respond within 12 hours.