

## Baseus 17-in-1 USB C Docking Station

# Baseus 17-in-1 USB C Docking Station User Manual

Model: 17-in-1 USB C Docking Station

## INTRODUCTION

---

Thank you for choosing the Baseus 17-in-1 USB C Docking Station. This versatile docking station is designed to expand the connectivity of your laptop, providing multiple ports for peripherals, external displays, and network access. Please read this manual carefully to ensure proper setup and operation of your device.



The Baseus 17-in-1 USB C Docking Station, showcasing its compact design and the array of connectivity options it provides, including USB-C, HDMI, Ethernet, and card reader slots.

## PRODUCT OVERVIEW

The Baseus 17-in-1 USB C Docking Station offers a comprehensive solution for expanding your laptop's capabilities. It features a wide range of ports to connect multiple devices simultaneously.

- **Immersive 4K@60Hz Triple Display:** Supports up to three external monitors with 4K@60Hz resolution for enhanced productivity.
- **Versatile 17-in-1 Connectivity:** Includes 3 HDMI, 3 USB-A & 2 USB-C 3.0, 2 USB 2.0, PD, RJ45, and SD/TF card slots.
- **Rapid USB 3.0 Data Transfer:** Achieve data speeds up to 5Gbps with USB 3.0 ports.
- **Efficient Charging & High-Speed Networking:** 100W Power Delivery (PD) port and 1Gbps Ethernet port.
- **Wide Compatibility:** Plug-and-play with Dell, Acer, HP, Mac, Steam Deck, and more.

# 17-in-1 Docking Station

- 1  SD/TF Card Reader 104MB/S
- 2  3\* USB A 3.0 5Gb/S (Only Data)
- 3  2\* USB C 3.0 5Gb/S (Only Data)
- 4  3.5mm Mic/Audio
- 5  Led Indicator
- 6  U-shaped Stand
- 7  100W PD
- 8  To Host
- 9  2\* USB 2.0
- 10  3\* 4K HDMI
- 11  DC Power 36W Input
- 12  LAN



Detailed view of the Baseus 17-in-1 Docking Station highlighting its various ports: SD/TF Card Reader, USB A 3.0, USB C 3.0, 3.5mm Mic/Audio, LED Indicator, U-shaped Stand, 100W PD, Host connection, USB 2.0, 4K HDMI, DC Power Input, and LAN port.

## Port Descriptions:

No.	Port Type	Function
1	SD/TF Card Reader	High-speed data transfer for SD and TF cards (up to 104MB/s).
2	USB A 3.0 (x3)	5Gbps data transfer for USB-A devices.

No.	Port Type	Function
3	USB C 3.0 (x2)	5Gbps data transfer for USB-C devices.
4	3.5mm Mic/Audio	Audio input/output for headphones or microphones.
5	LED Indicator	Indicates power and connection status.
6	U-shaped Stand	Provides stable vertical positioning for the docking station.
7	100W PD (Power Delivery)	Power input for the docking station and pass-through charging for the laptop.
8	To Host	USB-C connection to your laptop.
9	USB 2.0 (x2)	Standard USB ports for connecting peripherals like keyboards and mice.
10	4K HDMI (x3)	Video output for connecting up to three 4K monitors.
11	DC Power 36W Input	Dedicated power input for the docking station (36W adapter included).
12	LAN (Gigabit Ethernet)	RJ45 port for high-speed wired network connection (up to 1Gbps).

## SETUP GUIDE

---

Follow these steps to set up your Baseus 17-in-1 USB C Docking Station:

- Connect Power:** Connect the included 36W DC power adapter to the 'DC Power 36W Input' port (11) on the docking station. For laptop charging, connect your laptop's USB-C power adapter (suggested 60-100W) to the '100W PD' port (7) on the docking station.
- Connect to Laptop:** Use the provided USB-C to USB-C cable to connect the 'To Host' port (8) on the docking station to a compatible USB-C port on your laptop. Ensure your laptop's USB-C port supports video output (DisplayPort Alternate Mode) and Power Delivery for full functionality.
- Connect Displays:** Connect your external monitors to the '4K HDMI' ports (10) on the docking station using HDMI cables. The docking station supports up to three external displays.
- Connect Peripherals:** Connect your USB devices (keyboard, mouse, external drives) to the USB A 3.0 (2), USB C 3.0 (3), or USB 2.0 (9) ports. Insert SD/TF cards into the respective slots (1) if needed.
- Connect Network:** For a wired internet connection, connect an Ethernet cable from your router or modem to the 'LAN' port (12).



# Distinguish Charging Ports

①PD ②PC ③DC



Illustration of power connections: The 36W DC power adapter supplies power to the dock, while an additional USB-C compatible power supply for the laptop can be connected to the PD port for pass-through charging.

This video provides a detailed introduction to the package contents and the various ports available on the Baseus 17-in-1 USB C Docking Station, guiding you through initial setup.

This video demonstrates how to check your laptop's compatibility before purchasing or setting up the docking station, ensuring it supports the necessary features like DisplayPort Alt Mode.

## OPERATING INSTRUCTIONS

## Display Modes

The docking station supports various display modes depending on your operating system.

### For Windows OS:

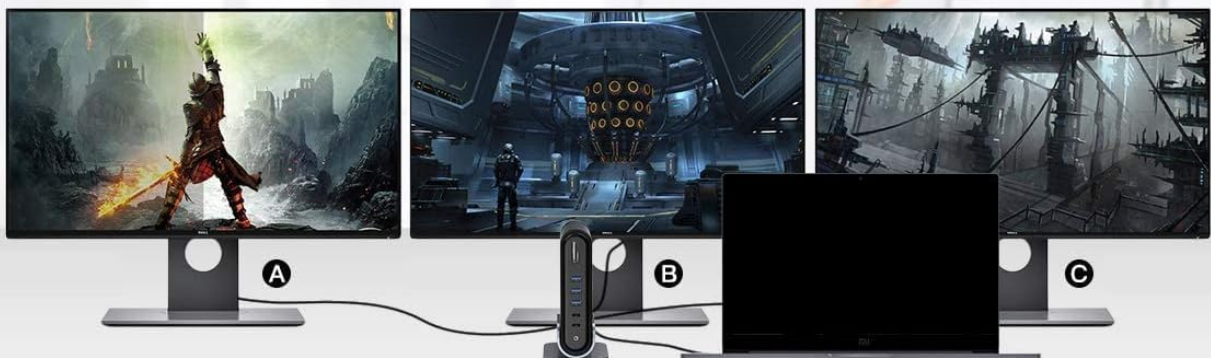
Windows laptops typically support Multi-Stream Transport (MST), allowing for extended desktop across multiple displays.

## Triple Display Modes (For Windows)

### Mirror Mode(A+A+A+A)



### Extend Mode(A+B+C+D)



## Dual Vivid Output

### A+A+B



### A+B+C



 Note: Laptops with  graphics card supports extend up 3 screens

Visual representation of Mirror Mode (A+A+A+A) and Extended Mode (A+B+C+D) for Windows laptops using the docking station.  
Note that laptops with Intel graphics cards support extending up to 3 screens.

- **Mirror Mode (A+A+A+A):** All connected displays (including your laptop screen) show the same content.



- **Extended Mode (A+B+C+D):** Each connected display shows different content, extending your desktop across multiple screens. This allows for increased workspace and multitasking.
- **Dual Vivid Output:** Specific configurations like A+A+B or A+B+C are supported, providing flexible display arrangements at 1080P@60Hz.

### For Mac OS:

Mac OS does not support Multi-Stream Transport (MST) for extended displays. Therefore, Mac users can only mirror their display across multiple external monitors.

## Triple Display Modes (For MAC OS)



### Mirror Mode(A+A+A+A)



### Extend Mode(A+B+B+B)



**Note:Mac OS does not support MTS(A+B+C+D)**

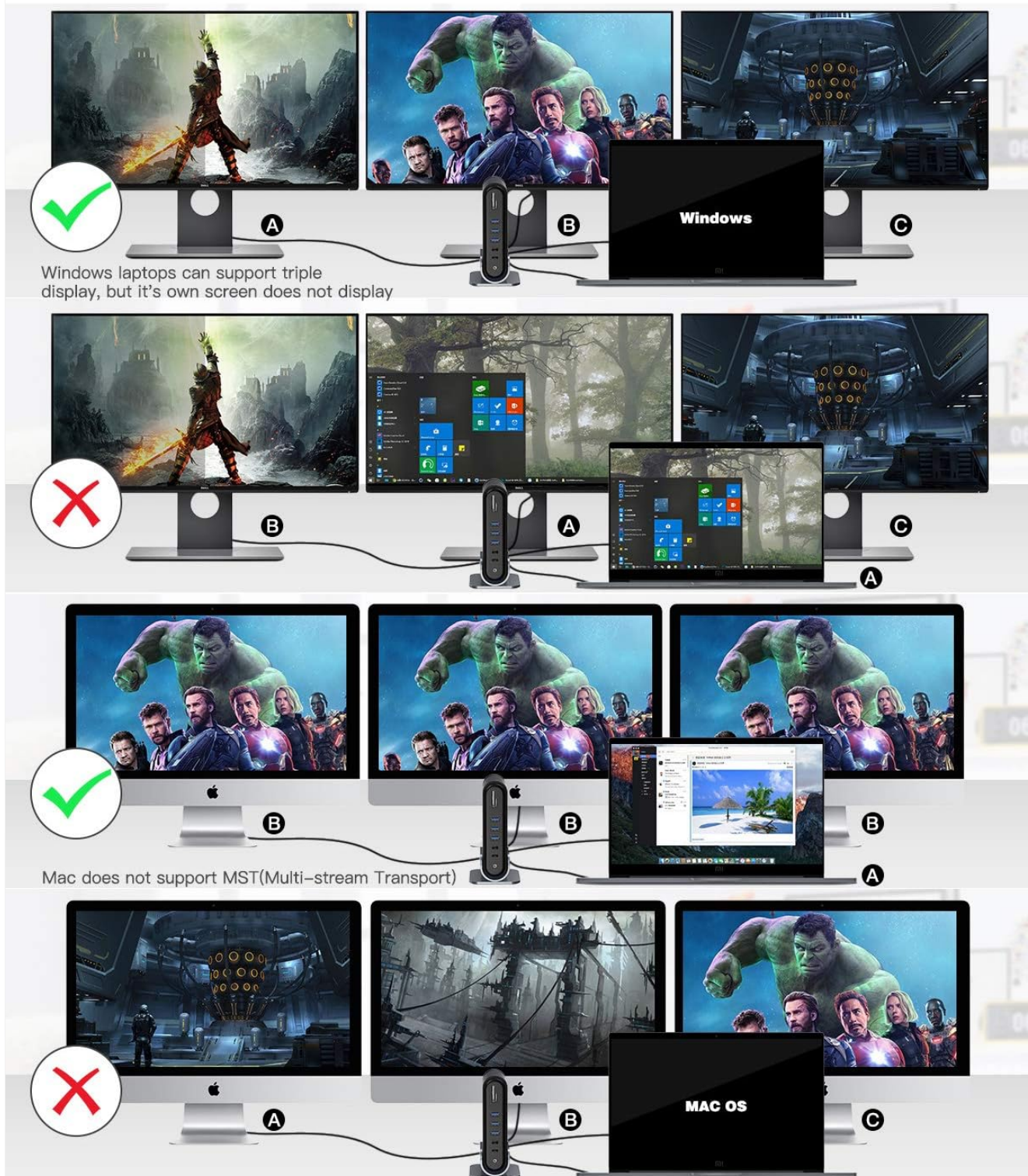
Visual representation of Mirror Mode (A+A+A+A) and Extend Mode (A+B+B+B) for Mac OS. A crucial note indicates that Mac OS does not support MTS (Multi-Stream Transport), meaning extended displays will mirror the primary external display.

- **Mirror Mode (A+A+A+A):** All connected displays (including your laptop screen) will show the same content.

- **Extend Mode (A+B+B+B):** Your laptop screen (A) can be extended to one external display (B), and any additional external displays will mirror the content of that first extended display (B). Mac OS does not support independent extended displays (A+B+C+D).

## MULTIPLE DISPLAY MODES

Only Windows system support MST, Mac OS does not support



A comparative diagram illustrating how Windows systems support triple display extension (MST), while Mac OS only supports mirroring across multiple external displays due to lack of MST support.

This video demonstrates the setup and functionality of the Baseus docking station with three monitors, showcasing its triple display capabilities.

## Data Transfer and Charging



The docking station's USB 3.0 ports (both Type-A and Type-C) provide high-speed data transfer up to 5Gbps, ideal for external hard drives, SSDs, and other high-bandwidth devices. The USB 2.0 ports are suitable for connecting standard peripherals like keyboards and mice.



The docking station supports high-speed data transfer via its USB A and USB C 3.0 ports, offering speeds of up to 5Gbps for efficient file management.

The 100W Power Delivery (PD) port allows you to charge your compatible laptop through the docking station, simplifying your cable management. Ensure your laptop's power adapter is connected to the PD port for this feature to work. The dedicated 36W DC input powers the docking station itself.

## TROUBLESHOOTING

If you encounter issues with your docking station, please refer to the following common solutions:

- **No Display Output / Intermittent Display:**
  - Ensure all HDMI cables are securely connected to both the docking station and the monitors.
  - Verify that your laptop's USB-C port supports DisplayPort Alternate Mode. Not all USB-C ports support video output.
  - For Mac OS users, remember that only mirror mode is supported for multiple external displays.
  - Update your laptop's graphics drivers and docking station drivers (if available from Baseus support).
  - Try restarting your laptop and reconnecting the docking station.
- **No Power Delivery / Laptop Not Charging:**
  - Ensure your laptop's original power adapter (or a compatible USB-C PD charger) is connected to the 100W PD port on the docking station.
  - Check if your laptop requires more than 100W of power. If so, you may need to connect the laptop's power supply directly to the laptop in addition to the docking station.
  - Avoid connecting multiple power sources to the laptop and docking station simultaneously, as this can cause issues or damage.
- **USB Devices Not Recognized / Intermittent Connection:**
  - Try connecting the USB device directly to your laptop to confirm it functions independently.
  - Ensure the docking station is receiving adequate power.
  - Reconnect the USB device to a different port on the docking station.
- **Network Connection Issues:**
  - Verify the Ethernet cable is securely connected to both the docking station and your router/modem.
  - Check your network settings on your laptop.

This video addresses frequently asked questions and common issues related to the docking station, offering quick solutions and tips.

## SPECIFICATIONS

Feature	Detail
Product Dimensions	3.15 x 3.15 x 6.37 inches
Item Weight	1.9 pounds (0.86 Kilograms)
Color	Black
Hardware Interface	USB 3.0 Type A, USB 3.0 Type C, Ethernet, HDMI, USB 2.0 Type A
Total USB Ports	8
Total HDMI Ports	3
Power Delivery (PD)	Up to 100W
LAN Speed	1Gbps

Feature	Detail
SD/TF Card Reader Speed	104MB/s
Manufacturer	Baseus
First Available Date	December 14, 2019

## CARE AND MAINTENANCE

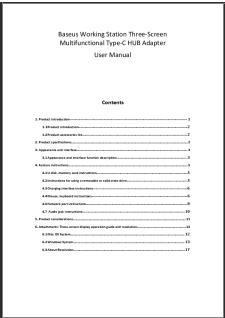
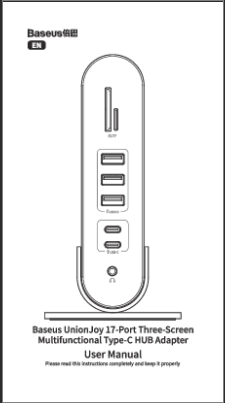
- Keep the docking station away from water, moisture, and extreme temperatures.
- Avoid dropping or subjecting the device to strong impacts.
- Clean the surface with a soft, dry cloth. Do not use harsh chemicals or abrasive materials.
- Ensure proper ventilation around the device to prevent overheating.
- Disconnect all cables when not in use for extended periods.

## WARRANTY AND SUPPORT


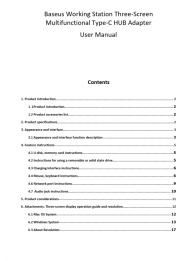
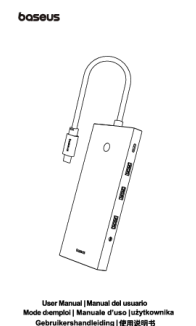
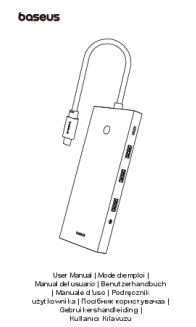
For detailed warranty information and technical support, please refer to the official Baseus website or the comprehensive [User Guide \(PDF\)](#) provided by the manufacturer. This PDF contains additional information and troubleshooting steps.

For further assistance, you may also contact Baseus customer service through their official channels.

### Related Documents - 17-in-1 USB C Docking Station

	<p><a href="#">Baseus Working Station Three-Screen Multifunctional Type-C HUB Adapter User Manual</a></p> <p>User manual for the Baseus Working Station Three-Screen Multifunctional Type-C HUB Adapter. Learn about its specifications, features, connectivity options including HDMI, USB 3.0, USB-C, Ethernet, SD/TF card reader, and audio jack. Includes guides for multi-screen display setup on Mac OS and Windows systems, and resolution compatibility.</p>
	<p><a href="#">Baseus UnionJoy 17-Port USB-C Hub Adapter User Manual</a></p> <p>Explore the features and specifications of the Baseus UnionJoy 17-Port Three-Screen Multifunctional Type-C HUB Adapter. This user manual provides detailed instructions, setup guides, and troubleshooting tips for enhancing your connectivity.</p>



	<p><a href="#">Baseus 7-in-1 USB-C Hub Docking Station: HDMI, PD 100W, USB 3.0, SD/TF Reader</a></p> <p>User manual and product overview for the Baseus Metal Micro-light Series 7-in-1 USB-C Hub. Details features like 4K@60Hz HDMI, 100W Power Delivery, USB 3.0 ports, and card reader compatibility for laptops, tablets, and gaming devices.</p>
	<p><a href="#">Baseus Working Station Three-Screen Multifunctional Type-C HUB Adapter User Manual</a></p> <p>Comprehensive user manual for the Baseus Working Station Three-Screen Multifunctional Type-C HUB Adapter, covering product introduction, specifications, port functions, usage instructions for various devices, system compatibility (macOS, Windows), display configurations, and resolution details.</p>
	<p><a href="#">Baseus PortalJoy Series 13-Port Quadruple-Display HUB User Manual</a></p> <p>Comprehensive user manual for the Baseus PortalJoy Series 13-Port Quadruple-Display HUB (Model BS-OH119), detailing specifications, port descriptions, usage instructions, and FAQs.</p>
	<p><a href="#">Baseus PortalJoy Series 13-Port Quadruple-Display HUB User Manual</a></p> <p>Comprehensive user manual for the Baseus PortalJoy Series 13-Port Quadruple-Display HUB (Model BS-OH119), detailing specifications, features, port descriptions, attention points, FAQs, and compliance information.</p>