

YESKAMO Z6S

YESKAMO Solar Security Camera User Manual

Model: Z6S (ASIN: B082PSRSPS)

Brand: YESKAMO

1. INTRODUCTION

Thank you for choosing the YESKAMO Solar Security Camera. This 1080P HD wireless outdoor camera is designed for home security, offering a wire-free, solar-powered surveillance solution with two-way audio. This manual provides detailed instructions for setup, operation, and maintenance to ensure optimal performance and longevity of your device.

2. PRODUCT OVERVIEW AND KEY FEATURES

The YESKAMO Solar Security Camera combines advanced technology with user-friendly design to provide reliable outdoor monitoring. Its key features include:

- **100% Wire-Free & Solar Powered:** Equipped with built-in 10400mAh rechargeable lithium batteries and a solar panel, significantly reducing the need for manual recharging.
- **Outdoor 2.4GHz WiFi Connectivity:** Features dual antennas for enhanced and stable wireless connection, offering extended range. IP65 certified for weather resistance.
- **Real-time Protection & Two-Way Audio:** Sends instant notifications upon motion detection and allows for fluent two-way communication via the integrated speaker and microphone.
- **Crisp 1080P HD Images & Smooth Night Vision:** Delivers clear 1920x1080 resolution video with a wide viewing angle. Infrared LEDs provide bright and smooth night vision up to 65ft.
- **Smart PIR Sensor & Human-Shape Detection:** Utilizes a PIR sensor to detect objects with heat signatures and includes human-shape detection technology to minimize false alarms from pets or animals.
- **User-Friendly App & Privacy Secure:** Easy setup via a free iOS/Android app, supporting live view, playback, and device sharing. Offers SD card (not included) and cloud storage options with HTTPS certified encryption.



Figure 2.1: The YESKAMO Solar Security Camera with its accompanying solar panel, designed for continuous power.

Non-stop Solar Power System

20% High-efficient single-crystal solar



Rechargeable Battery Power

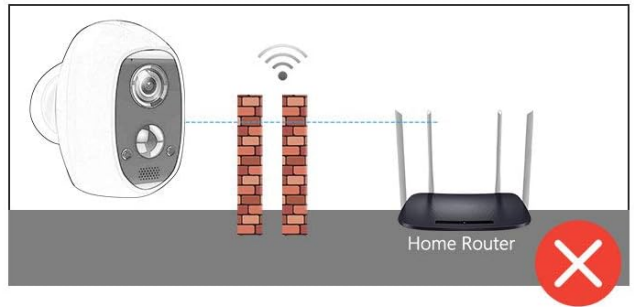
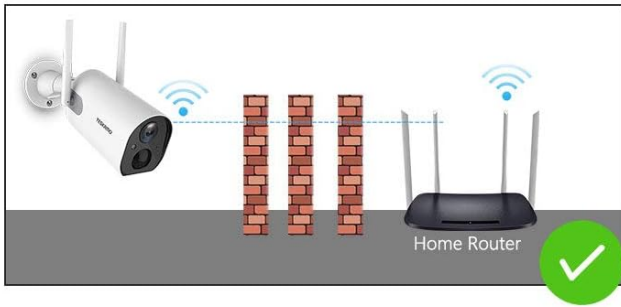
10400mAh large capacity,
upgraded 40% more than others



Figure 2.2: The camera mounted outdoors, demonstrating its solar charging capability, alongside an image detailing the rechargeable battery compartment.

Why Choose YESKAMO

Enhanced Wireless Connection



Wire-free Installation



Battery Upgraded 40% More Capacity

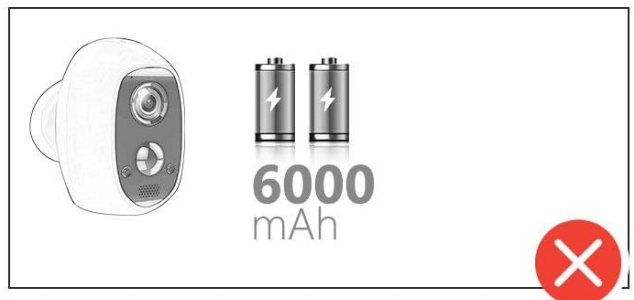


Figure 2.3: Visual comparison highlighting the camera's enhanced wireless connection, ease of wire-free installation, and superior 10400mAh battery capacity compared to standard models.



Wireless



1 Charge=1Year



Solar system



Cloud service



SD card slot



Encryption



Full HD



Live Stream



Motion detection



IP65

Figure 2.4: Icons representing key features such as wireless connectivity, long battery life, solar power, cloud service, SD card slot, encryption, Full HD, live stream, motion detection, and IP65 waterproofing.

3. SETUP AND INSTALLATION

Follow these steps to set up your YESKAMO Solar Security Camera:

1. **Charge the Battery:** Before initial use, fully charge the camera's built-in 10400mAh battery using the provided USB cable. A full charge ensures optimal performance and longevity.
2. **Download the App:** Search for and download the "CloudEdge" app from your smartphone's app store (available for iOS and Android).
3. **Register an Account:** Open the CloudEdge app and follow the on-screen instructions to register a new account or log in if you already have one.
4. **Add Device:**

- Tap the "+" icon in the app to add a new device.
- Select "Battery Camera" or the appropriate camera type.
- Power on the camera. The camera's indicator light should flash, indicating it's ready for pairing.
- Follow the app's instructions to connect the camera to your 2.4GHz Wi-Fi network. Ensure your phone is connected to the same 2.4GHz Wi-Fi network during setup.
- Scan the QR code displayed on your phone screen with the camera lens (hold the phone about 15cm/5.9 inches from the camera). You will hear a confirmation sound when successful.

5. Mount the Camera:

- Choose a suitable outdoor location for installation. Ensure the camera has a clear view of the area you wish to monitor and the solar panel receives ample direct sunlight.
- Use the provided mounting bracket and screws to securely attach the camera and solar panel to a wall or other stable surface.
- Adjust the angle of the camera and solar panel for optimal coverage and solar charging efficiency.



Figure 3.1: A visual guide to the camera setup process, including wire-free installation, scanning the QR code for device pairing, Wi-Fi connection, and a view of the live feed within the mobile application.

4. OPERATING INSTRUCTIONS

Once your camera is set up, you can access its features through the CloudEdge app:

- **Live View:** Open the app and select your camera to view the live feed.
- **Two-Way Audio:** Tap the microphone icon in the live view to speak through the camera's speaker. Tap the speaker icon to listen to audio from the camera's location.
- **Motion Detection & Alerts:** The camera will automatically detect motion and send real-time notifications to your phone. You can adjust sensitivity and enable human-shape detection in the app settings to reduce false alarms.
- **Recording & Playback:** Motion-triggered recordings are saved to the inserted SD card (not included) or cloud storage (subscription may be required). Access recorded footage via the "Playback" or "Cloud" section in the app.
- **Night Vision:** The camera automatically switches to infrared night vision in low-light conditions, providing clear black and white images.
- **Sharing Device:** You can share access to your camera with family members or trusted individuals through the app's sharing feature.

Wide View Angle 1080P HD Frames

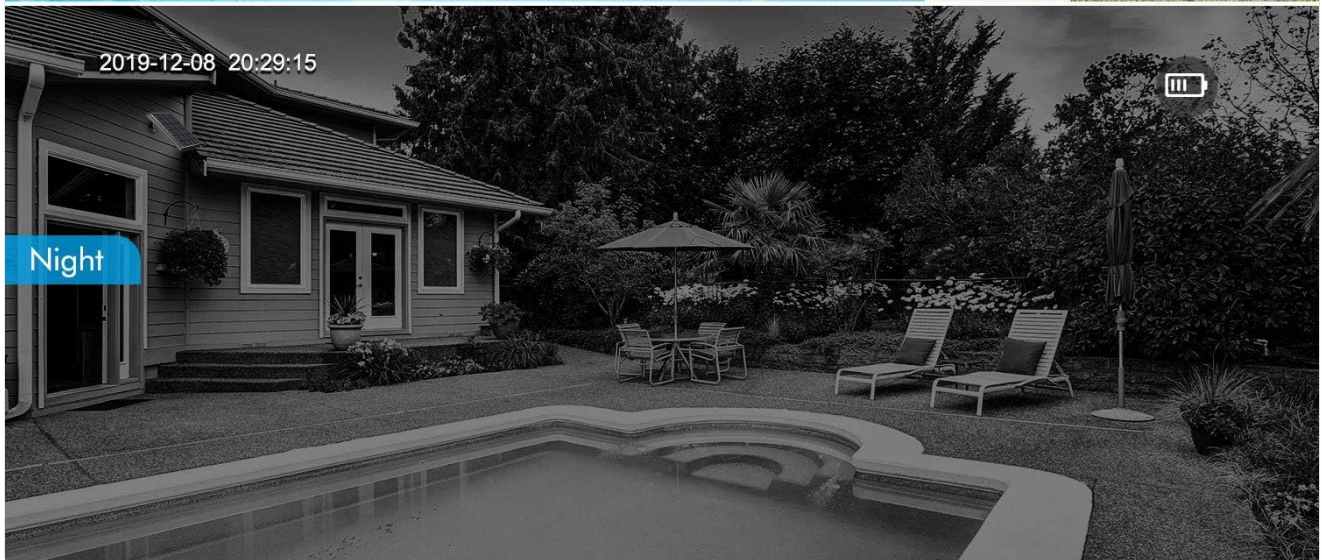
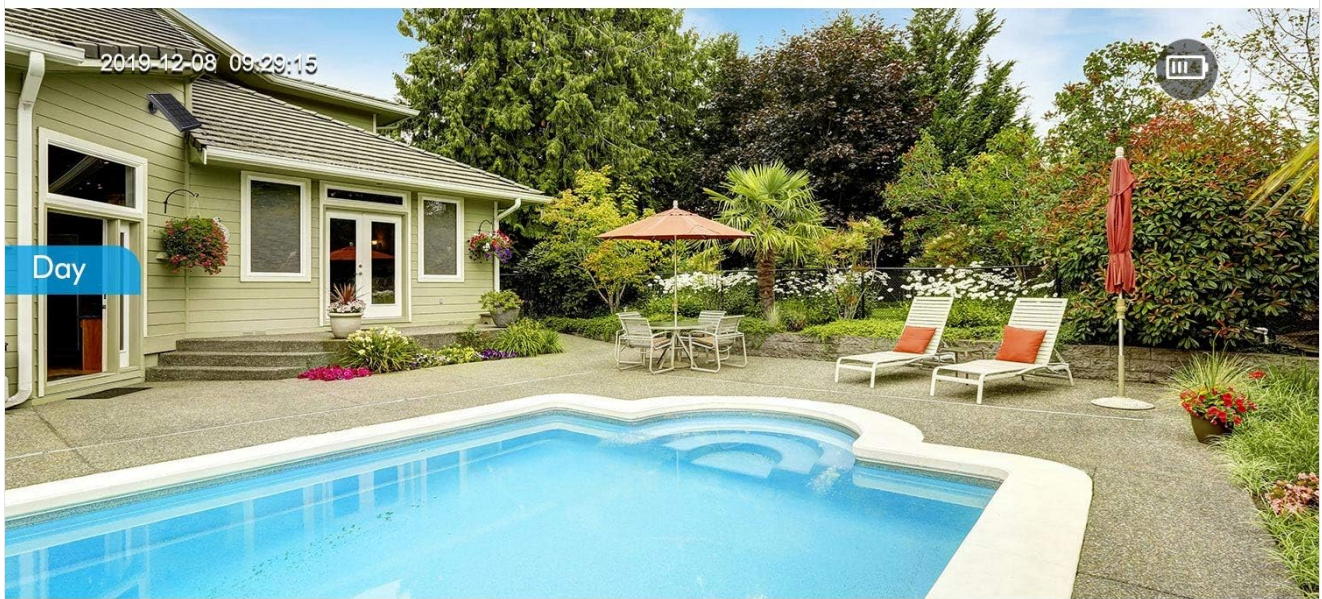


Figure 4.1: A comparison illustrating the clear 1080P HD video quality during the day and the effective infrared night vision capabilities of the camera in low-light conditions.

Two-way Audio

Talk fluently and keep close with your love!



Figure 4.2: A visual representation of the camera's two-way audio function, allowing users to communicate remotely through the mobile app.

Instant & Accurate Alert Messages

Built-in PIR sensor, detects only objects with heats signatures(about 37°C/98.6°F), reduce false alarms.



Figure 4.3: An illustration demonstrating the camera's smart PIR sensor and human-shape detection technology, which helps to accurately identify human movement and reduce false alarms.

5. MAINTENANCE

- **Cleaning:** Regularly wipe the camera lens and solar panel with a soft, damp cloth to ensure clear vision and efficient solar charging. Avoid abrasive cleaners.
- **Battery Management:** While solar-powered, ensure the solar panel receives sufficient direct sunlight. If the battery level drops significantly during prolonged cloudy periods, you may need to manually recharge the camera using the USB cable.
- **Firmware Updates:** Check the CloudEdge app periodically for firmware updates. Keeping your camera's firmware updated ensures optimal performance and security.
- **SD Card Maintenance:** If using an SD card, format it periodically through the app to maintain recording efficiency and prevent data corruption.

365 Days Stand-by

Built-in **10400mAh** Rechargeable Battery



YESKAMO
One Charge = 365 Days Stand-by



Other Brands
Recharge Every Months



Figure 5.1: A visual comparison highlighting the extended 365-day standby battery life of the YESKAMO camera with its 10400mAh battery, reducing the frequency of manual recharges.

6. TROUBLESHOOTING

Problem	Possible Cause	Solution
Camera offline	Weak Wi-Fi signal, low battery, camera power off.	Check Wi-Fi signal strength, recharge battery, ensure camera is powered on. Relocate camera closer to router if signal is weak.
Frequent false alarms	High PIR sensitivity, environmental factors (e.g., swaying trees, passing cars).	Adjust PIR sensitivity in app settings. Enable human-shape detection. Reposition camera to avoid common triggers.

Problem	Possible Cause	Solution
No recording	No SD card, full SD card, cloud storage issue, motion detection disabled.	Insert/replace SD card, format SD card, check cloud storage status, ensure motion detection is enabled.
Poor night vision	Obstruction near lens, insufficient IR light.	Clear any obstructions from the camera's view. Ensure IR LEDs are not blocked.

7. SPECIFICATIONS

Feature	Detail
Model	US-Z6S
Video Capture Resolution	1080p
Connectivity Technology	Wireless (2.4GHz Wi-Fi)
Power Source	Battery Powered, Solar
Battery Capacity	10400mAh (4Pcs 18650 batteries)
Special Features	Night Vision, Motion Sensor, Two-Way Audio
Indoor/Outdoor Usage	Outdoor
International Protection Rating	IP65
Item Dimensions (L x W x H)	7 x 4 x 5.5 inches
Item Weight	13.4 ounces (0.38 Kilograms)
Optical Zoom	4x (Digital Zoom)
Alert Type	Audio and Motion
Video Capture Format	MPEG-4

8. WARRANTY AND SUPPORT

YESKAMO products are designed for reliability and performance. For warranty information, technical support, or any inquiries regarding your solar security camera, please refer to the contact details provided with your product packaging or visit the official YESKAMO website. Our customer service team is available to assist you with any

questions or issues you may encounter.

For further assistance, you may also refer to the [YESKAMO Store on Amazon](#).

© 2024 YESKAMO. All rights reserved.

This manual is for informational purposes only. Product specifications and features are subject to change without notice.