

## AMZCHEF FS-IRC119

# AMZCHEF Domino Dual Induction Cooktop

Model: FS-IRC119

## 1. INTRODUCTION

Thank you for choosing the AMZCHEF Domino Dual Induction Cooktop. This appliance is designed for efficient and precise cooking, featuring two high-power induction zones, touch-sensor controls, and multiple safety features. Please read this manual thoroughly before installation and operation to ensure safe and optimal use of your new cooktop.

## Built-in Size

Fittable for any cooking pots.  
It is a good choice for your family  
and friends in kitchen.

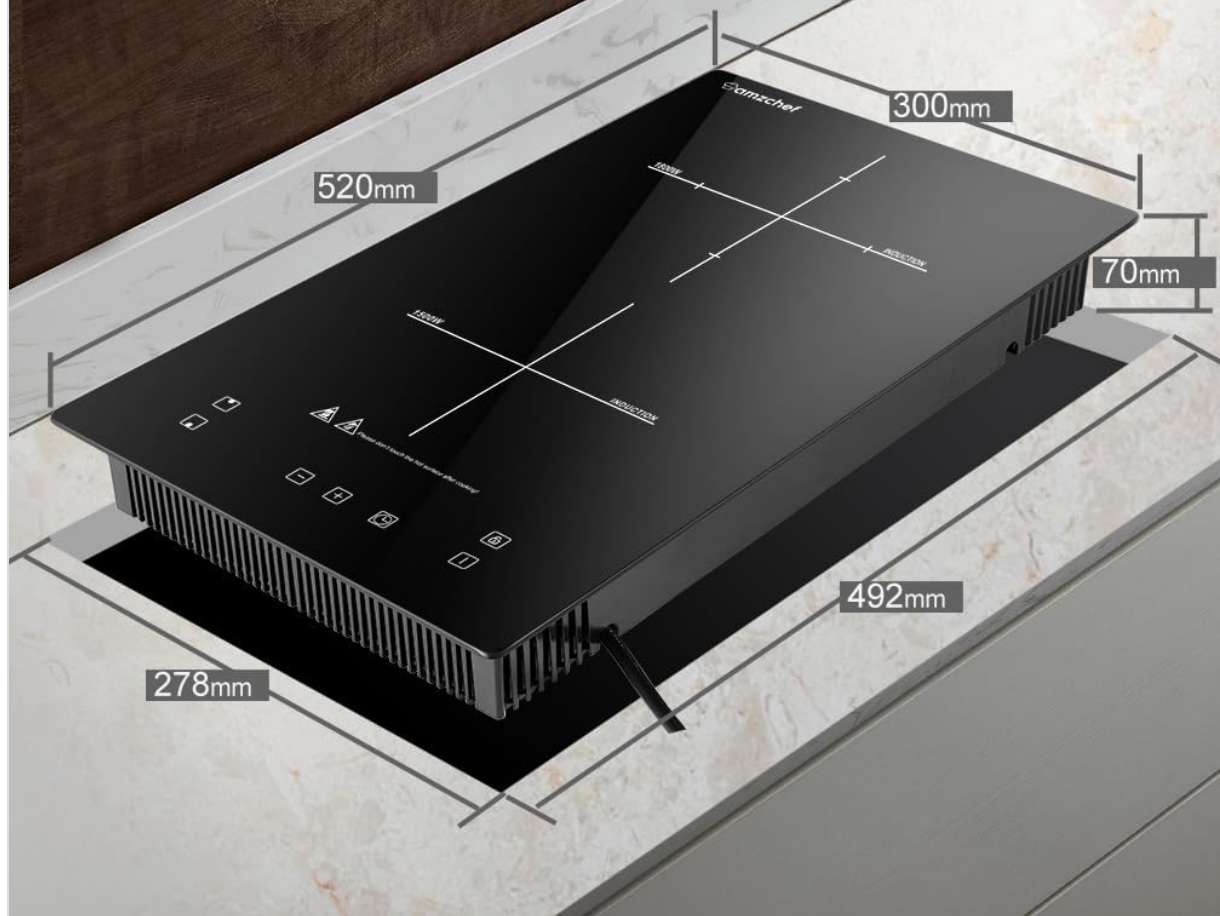


Image: The AMZCHEF Domino Dual Induction Cooktop, showcasing its sleek black glass-ceramic surface and two cooking zones.

## 2. SAFETY INFORMATION

Always prioritize safety when operating electrical appliances. This cooktop requires a 220-240V hardwired electrical connection. Ensure installation is performed by a qualified electrician in accordance with local codes.

- Do not touch the hot surface after cooking. Residual heat indicators will illuminate.
- Use only compatible magnetic cookware. Incompatible cookware will not heat and may trigger a pot detection error.
- Keep children away from the appliance during operation and when it is cooling down. Utilize the child safety lock feature.
- Do not place metallic objects such as knives, forks, spoons, or lids on the cooktop surface as they can become hot.
- Ensure proper ventilation around the cooktop, especially if built-in.

## 3. PACKAGE CONTENTS

Verify that all items are present upon unpacking:

- AMZCHEF Domino Dual Induction Cooktop (Model FS-IRC119)
- User Manual

## 4. INSTALLATION

---

The AMZCHEF Domino Dual Induction Cooktop can be used as a built-in unit or as a standalone appliance. For built-in installation, ensure your countertop cutout dimensions match the product specifications. The cooktop is equipped with small feet for standalone use.

### Electrical Connection

This cooktop requires a 220-240V electrical supply and must be hardwired. It does not come with a plug. Professional installation by a certified electrician is highly recommended to ensure compliance with all electrical safety standards.



Image: Diagram showing the built-in dimensions of the cooktop (520mm x 300mm x 70mm) and the required cutout size (492mm x 278mm).

## 5. OPERATING INSTRUCTIONS

---

The cooktop features a digital touch control panel for easy operation.

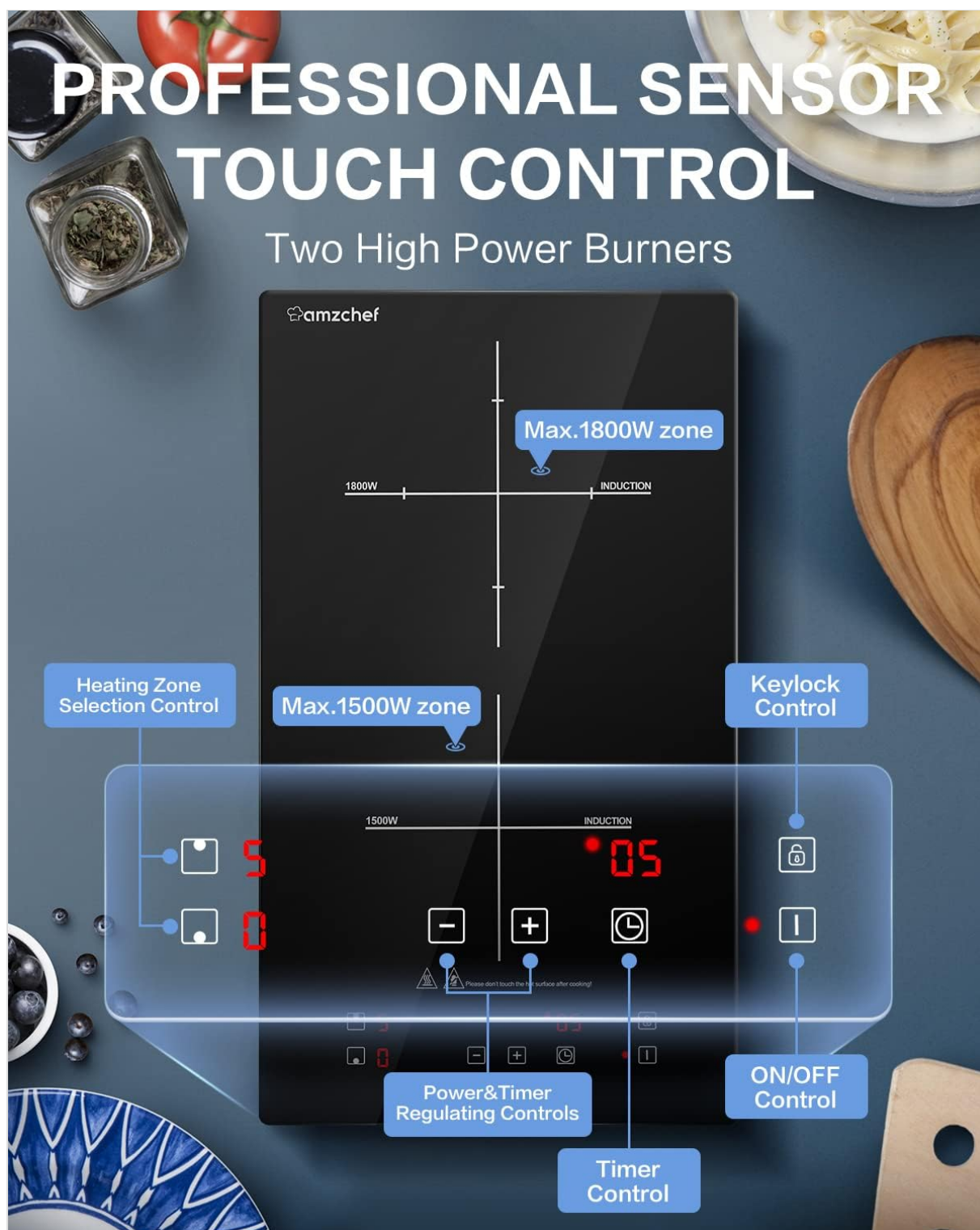


Image: Close-up of the cooktop's touch control panel, highlighting heating zone selection, power/timer controls, keylock, and ON/OFF button.

## Power On/Off

- Press the **ON/OFF** button to turn the cooktop on. The indicator lights will illuminate.
- Press the **ON/OFF** button again to turn the cooktop off.

## Heating Zone Selection and Power Adjustment

- After turning on the cooktop, select the desired heating zone by pressing its corresponding selection control.
- Use the **+** and **-** buttons to adjust the power level. There are 10 power levels available, with zones rated at 1500W and 1800W.



- The cooktop also features a booster function for rapid heating.



Image: Graphic illustrating the 10 power levels and the 0-99 minute timer function on the cooktop.

## Timer Setting

- Press the **Timer** button to activate the timer function.
- Use the **+** and **-** buttons to set the desired cooking time, from 1 to 99 minutes.
- The cooktop will automatically turn off the selected cooking zone once the timer expires.

## Child Safety Lock

- To activate the child safety lock, touch the **LOCK** symbol on the control panel. This will prevent accidental changes to settings.
- To deactivate, touch and hold the **LOCK** symbol again until it unlocks.

## 6. COMPATIBLE COOKWARE

Induction cooktops require cookware with a magnetic base. The cooktop features a pot detection system that will automatically switch off if no cookware or incompatible cookware is detected after 1 minute.

### Compatible Cookware Types:

- Cast iron cookware
- Iron pans
- Iron plates
- Cookware with a magnetic base
- Stainless steel cookware with a magnetic base

### Incompatible Cookware Types:

- Copper cookware
- Ceramic cookware
- Aluminum cookware
- Glass cookware
- Cookware with uneven bottoms



Image: Visual guide showing various types of cookware, indicating which are compatible (e.g., cast iron, magnetic pot, stainless steel with magnetic base) and incompatible (e.g., copper, ceramic, aluminum, glass, uneven bottom) with the induction cooktop.

## 7. CLEANING AND MAINTENANCE

The cooktop features a black polished crystal glass surface, making it easy to clean and scratch-resistant.

- Always ensure the cooktop is turned off and cool before cleaning.
- Wipe the surface with a soft, damp cloth and mild detergent.
- For stubborn stains, use a non-abrasive cleaner specifically designed for glass-ceramic surfaces.
- Avoid using abrasive sponges, scouring pads, or harsh chemicals that could damage the surface.



Image: A hand wiping the black polished crystal glass surface of the cooktop, demonstrating its easy maintenance and scratch prevention.

## Cooling System

The cooktop is equipped with an upgraded cooling system and two powerful fans to ensure fast heat dissipation and long service life. Keep the ventilation openings clear of obstructions.



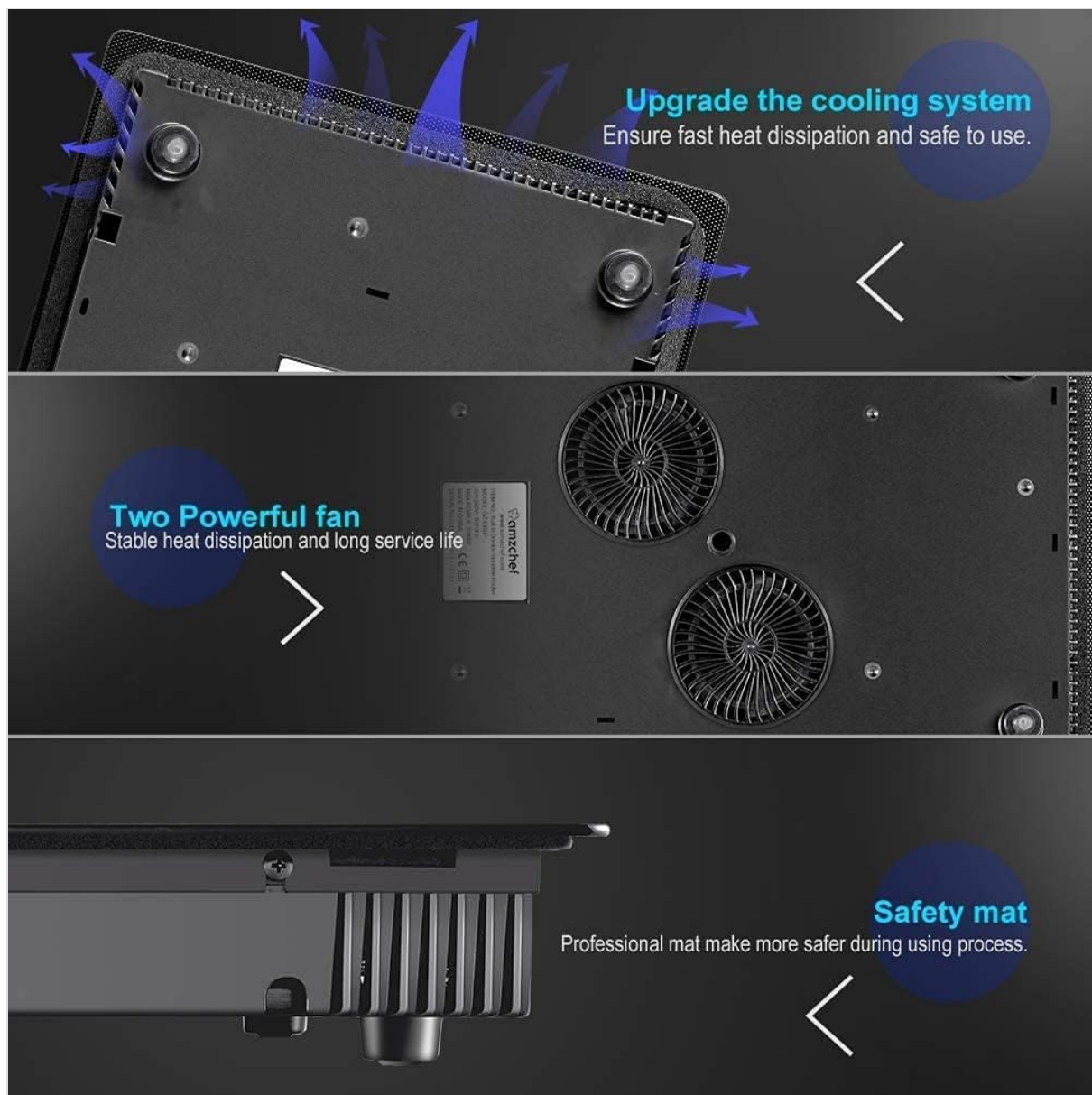


Image: Underside view of the cooktop, showing the upgraded cooling system with two powerful fans and a safety mat for stable operation.

## 8. TROUBLESHOOTING

If you encounter issues with your cooktop, refer to the following common troubleshooting steps:

- **Cooktop does not turn on:** Check the electrical connection and ensure the power supply is active.
- **Cookware is not heating:** Verify that you are using compatible magnetic cookware. The pot detection system will prevent heating with incompatible pots.
- **Error codes displayed:** Consult the detailed troubleshooting section in the full user manual for specific error code meanings and solutions.
- **Unusual noises:** A slight humming sound during operation is normal for induction cooktops due to the magnetic field. The cooling fans will also produce a sound.

For persistent issues, please contact AMZCHEF customer service.

## 9. SPECIFICATIONS

Feature	Specification
---------	---------------



Brand	AMZCHEF
Model Info	IRC119
Item Model Number	FS-IRC119
Installation Type	Built-In
Heating Elements	2
Color	Black
Voltage	220-240 Volts (Hardwired)
Wattage	3300 watts (Total)
Fuel Type	Electric
Material Type	Glass Ceramic
Product Dimensions	24.13 x 5.51 x 15.55 inches (approx.)
Item Weight	10.7 pounds
Special Features	Safety Lock, Timer

## 10. WARRANTY AND SUPPORT

The AMZCHEF Domino Dual Induction Cooktop comes with a one-year warranty. If you experience any issues or require assistance, please contact the AMZCHEF customer service team for support or a replacement during the warranty period.

For further assistance, please visit the AMZCHEF store or contact their customer support directly.