

Manuals+

[Q & A](#) | [Deep Search](#) | [Upload](#)

Manuals.plus /

- › [UpStart Components](#) /
- › Instruction Manual: 2-Pack W10314173 Dryer Drum Roller Replacement Kit

UpStart Components AP-WPW10314173-2PK-DL467

Instruction Manual: Dryer Drum Roller Replacement Kit

Model: AP-WPW10314173-2PK-DL467

1. PRODUCT OVERVIEW

This manual provides instructions for the installation and general information regarding the UpStart Components W10314173 Dryer Drum Roller Replacement Kit. This kit is designed to replace worn or damaged drum rollers in compatible Kenmore/Sears dryers, specifically model 110.63024101, and other models using WPW10314173 or equivalent part numbers. Replacing these rollers can help restore proper drum rotation, reduce noise, and extend the life of your dryer.



Components

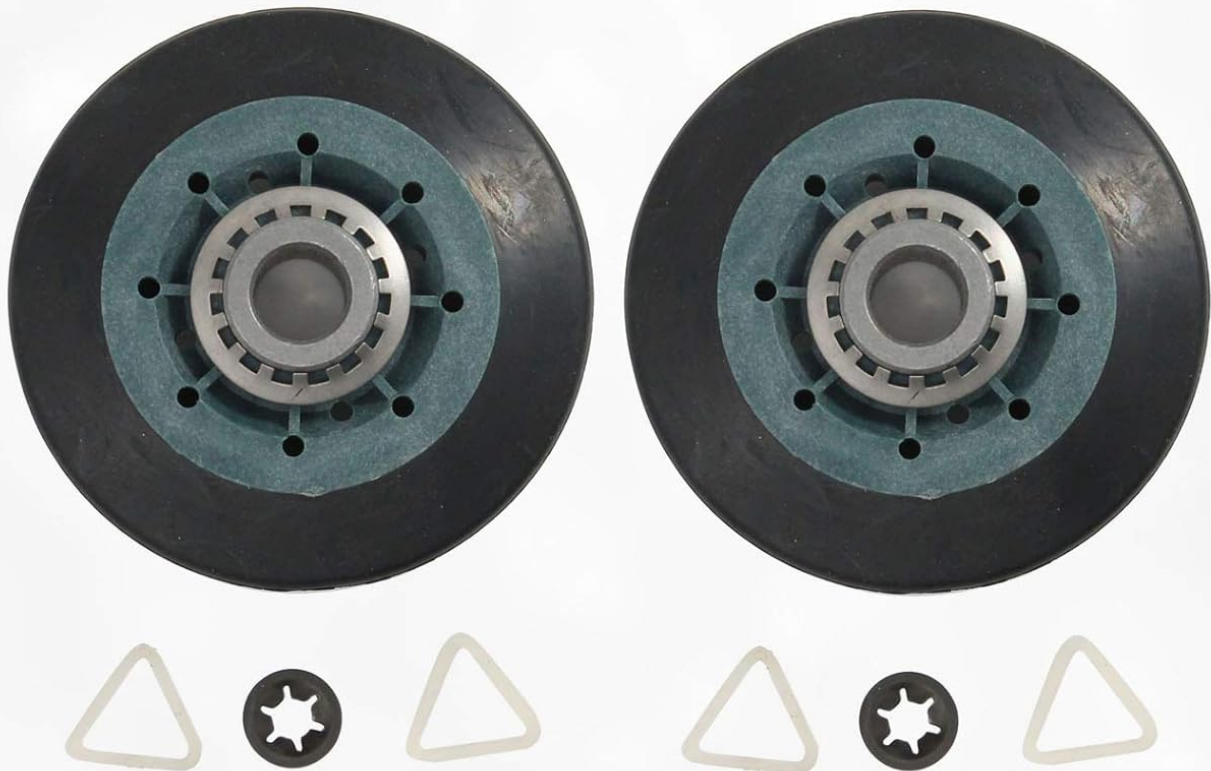
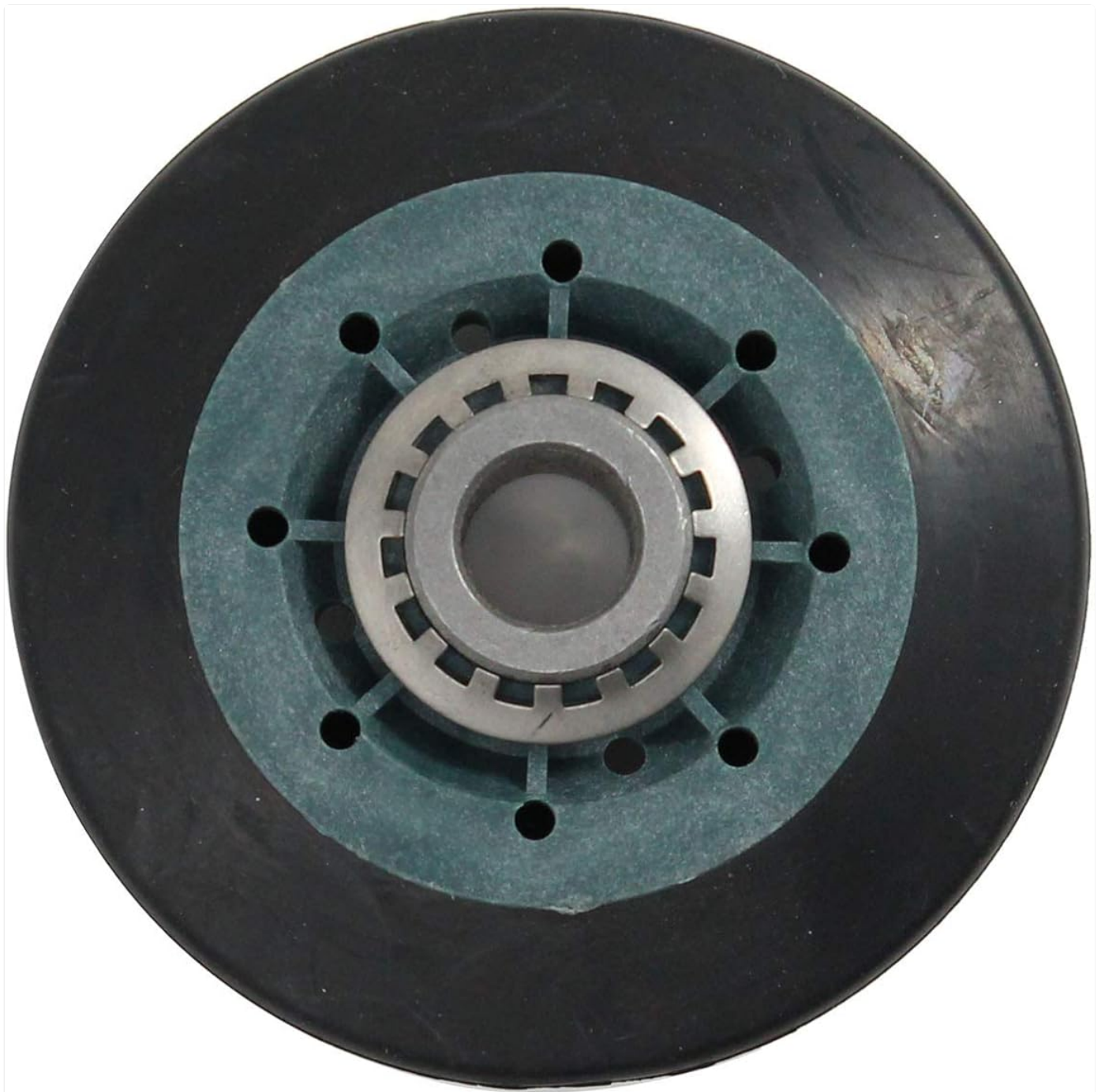


Figure 1.1: The UpStart Components W10314173 Dryer Drum Roller Replacement Kit, showing two rollers and associated hardware in their packaging.

2. PRODUCT CONTENTS AND COMPATIBILITY

2.1 Package Contents

- Two (2) W10314173 Dryer Drum Rollers
- Associated installation hardware (as pictured)



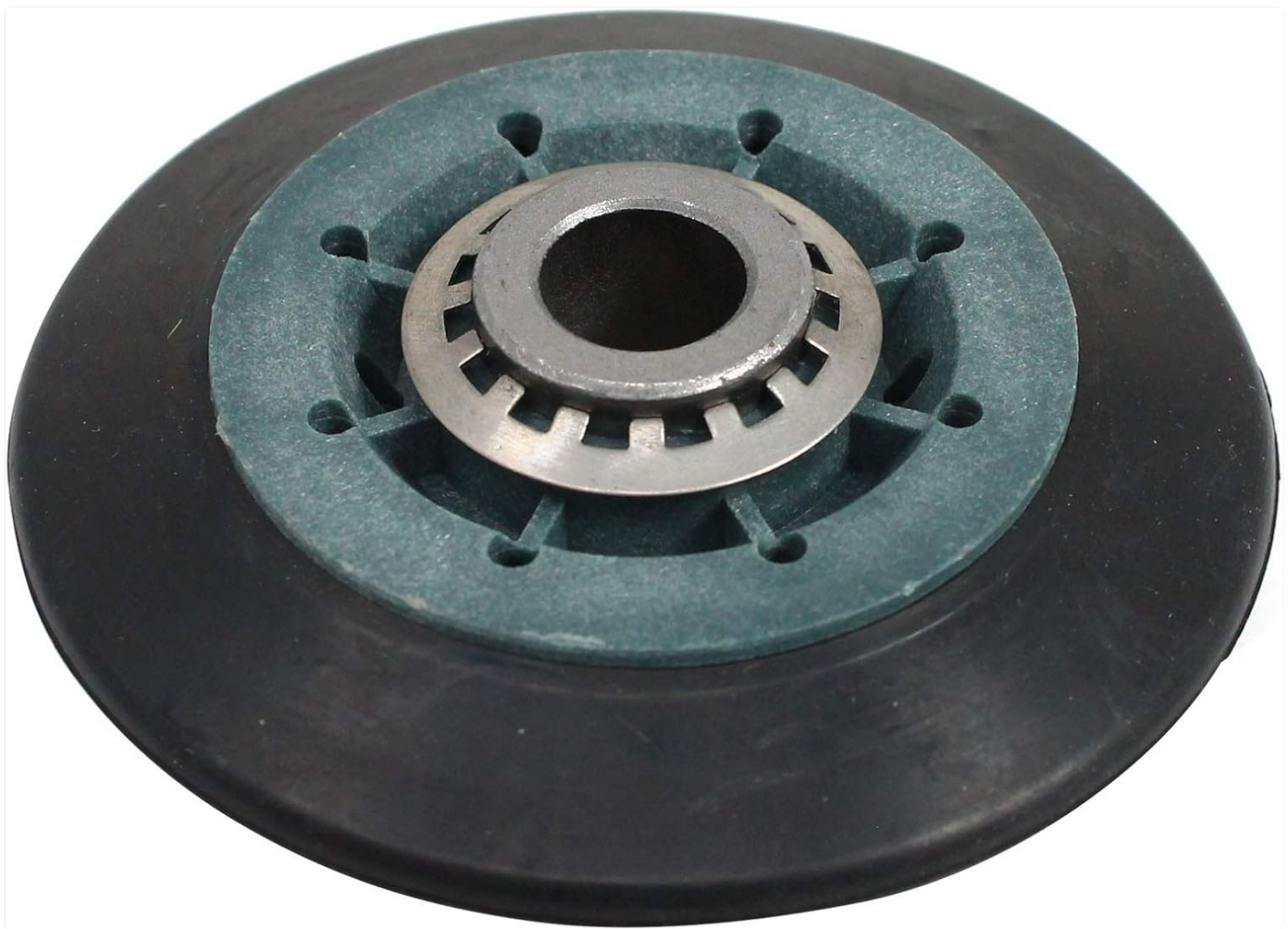


Figure 2.1: Detailed views of a single W10314173 dryer drum roller, highlighting its components and accompanying washers.

2.2 Compatibility

This replacement kit is compatible with various dryer models, including Kenmore/Sears 110.63024101 Dryer. It is designed to replace original part numbers such as WPW10314173, AP6019303, W10314173, W10314171, 3388342, 3389902, 3396801, 3396802, 3401846, 8536973, 8536974, PS11752609, W10756057, and WPW10314173VP.

Important: Always verify the compatibility with your specific dryer model and the original part number before proceeding with installation. Refer to your dryer's service manual or original part for confirmation.

3. SAFETY INFORMATION

Appliance repair can involve electrical and mechanical hazards. Please read and understand all safety precautions before attempting any repair.

- **Disconnect Power:** Always unplug the dryer from the electrical outlet or turn off the circuit breaker before beginning any repair work.
- **Gas Dryers:** For gas dryers, also turn off the gas supply valve.
- **Wear Protective Gear:** Use appropriate personal protective equipment, such as gloves and safety glasses.
- **Professional Assistance:** If you are unsure about any step or uncomfortable performing the repair, it is highly recommended to consult a qualified appliance technician.
- **Sharp Edges:** Be aware of sharp metal edges inside the dryer cabinet.

4. INSTALLATION (SETUP)

Replacing dryer drum rollers typically involves disassembling the dryer cabinet to access the drum support mechanism. The exact

steps may vary depending on your specific dryer model. The following is a general guide.

4.1 Tools Required (Common)

- Screwdrivers (Phillips and Flathead)
- Nut drivers or socket set
- Pliers
- Work gloves

4.2 General Installation Steps

1. Prepare the Dryer:

- Disconnect the dryer from its power source (unplug or turn off circuit breaker).
- For gas dryers, turn off the gas supply.
- Pull the dryer away from the wall to allow access.

2. Access the Drum Rollers:

- Depending on your dryer model, this may involve removing the top panel, front panel, or rear panel. Consult your dryer's service manual for specific disassembly instructions.
- Carefully remove the dryer drum to expose the roller assemblies.

3. Remove Old Rollers:

- Note the orientation and position of the existing rollers and their mounting hardware.
- Remove the retaining clips or nuts that secure the old rollers to their shafts.
- Carefully slide the old rollers off the shafts.

4. Install New Rollers:

- Clean any lint or debris from the roller shafts and surrounding areas.
- Slide the new UpStart Components drum rollers onto the shafts, ensuring they are correctly seated.
- Secure the new rollers with the provided or original retaining clips/nuts. Ensure they are firmly attached but can still rotate freely.

5. Reassemble Dryer:

- Carefully place the dryer drum back into position, ensuring it rests properly on the new rollers.
- Reattach all panels and components in reverse order of disassembly.
- Ensure all screws and fasteners are tightened securely.

6. Reconnect Power:

- Reconnect the dryer to its electrical power source.
- For gas dryers, turn the gas supply back on.

5. OPERATING (POST-INSTALLATION CHECK)

After installation, perform the following checks to ensure proper operation of your dryer with the new drum rollers:

1. **Visual Inspection:** Ensure all panels are securely fastened and there are no loose parts.
2. **Manual Drum Rotation:** Gently rotate the dryer drum by hand to ensure it spins smoothly and quietly.
3. **Test Cycle:** Run a short, empty cycle on your dryer. Listen for any unusual noises (squealing, grinding, thumping) and observe if the drum rotates freely.
4. **Heat Check:** Confirm that the dryer heats up properly during the test cycle.

If any issues persist or new noises occur, disconnect power immediately and re-examine the installation.

6. MAINTENANCE

Dryer drum rollers are wear-and-tear components and are not typically maintained. Their lifespan depends on usage and load weight. Regular maintenance of your dryer, such as cleaning the lint trap and checking the exhaust vent, can help ensure the overall efficiency and longevity of the appliance, which indirectly benefits components like drum rollers.

If you notice symptoms of worn rollers (e.g., squealing, thumping, drum not turning smoothly), it is recommended to replace them rather than attempt repair.

7. TROUBLESHOOTING

This section addresses common issues related to dryer drum rollers. For other dryer problems, consult your dryer's specific troubleshooting guide.

Symptom	Possible Cause	Solution
Loud squealing or grinding noise during operation	Worn or seized drum rollers.	Replace all drum rollers. Ensure proper installation.
Thumping or banging noise	Flat spots on rollers, loose rollers, or foreign object.	Inspect rollers for flat spots; replace if found. Check roller mounting for security. Remove any foreign objects.
Drum not turning or turning slowly	Severely worn or seized rollers, broken drive belt.	Replace rollers. Check and replace the drive belt if necessary.
Dryer vibrates excessively	Unevenly worn rollers, loose components.	Inspect and replace any unevenly worn rollers. Ensure all internal components are securely fastened.

If troubleshooting steps do not resolve the issue, it is recommended to seek assistance from a qualified appliance technician.

8. SPECIFICATIONS

Attribute	Detail
Product Name	Dryer Drum Roller Replacement Kit
Brand	UpStart Components
Model Number	AP-WPW10314173-2PK-DL467
Part Number (Replaces)	WPW10314173, AP6019303, W10314173, W10314171, 3388342, 3389902, 3396801, 3396802, 3401846, 8536973, 8536974, PS11752609, W10756057, WPW10314173VP
Quantity	2 Rollers per pack
ASIN	B082P8597T
Manufacturer	UpStart Components
First Available Date	December 12, 2019

9. WARRANTY INFORMATION

This product is an UpStart Components Brand replacement part and is not an OEM (Original Equipment Manufacturer) product. Any warranties for this product are offered solely by UpStart Components. This product is not covered under any warranties offered by the original manufacturers of the appliances it is compatible with.

For specific warranty terms and conditions, please refer to the warranty documentation provided with your purchase or contact UpStart Components directly.

10. CUSTOMER SUPPORT

For further assistance, technical support, or inquiries regarding this product, please contact UpStart Components customer service. Refer to your purchase documentation or the seller's information for contact details.

When contacting support, please have your product model number (AP-WPW10314173-2PK-DL467) and purchase information readily available.



© 2025 UpStart Components. All rights reserved.

This manual is for informational purposes only. UpStart Components is not responsible for any damages or injuries resulting from improper installation or use of this product.