



[Manuals.plus](#) /

> [Combuh](#) /

> Combuh LED Vanity Light Bar 24 Inch - Instruction Manual

Combuh 4894773455992

Combuh LED Vanity Light Bar 24 Inch - Instruction Manual

Model: 4894773455992

Brand: Combuh

1. INTRODUCTION

This manual provides essential information for the safe and efficient installation, operation, and maintenance of your Combuh 24-inch LED Vanity Light Bar. Please read these instructions thoroughly before installation and retain them for future reference.



Figure 1: Combuh 24-inch LED Vanity Light Bar.

The Combuh LED Vanity Light Bar is designed to provide modern, cool white illumination for bathrooms and vanity areas. Featuring a sleek design, durable construction, and energy-efficient LED technology, this fixture is suitable for indoor use only.

2. IMPORTANT SAFETY INFORMATION

- Always turn off the power at the circuit breaker before beginning installation.
- Installation should be performed by a qualified electrician or a person with adequate electrical knowledge.
- Ensure all electrical connections are secure and comply with local electrical codes.
- This fixture is designed for 110 Volts AC power supply.
- Do not use with a dimmer switch. Using a dimmer switch will cause stroboscopic flicker. Use a standard ON/OFF switch (not included).
- This product is rated IP44 for splash-proof protection, suitable for humid bathroom environments.
- This light is intended as an auxiliary light source and may not provide sufficient illumination for an entire bathroom.

3. PACKAGE CONTENTS

Verify that all components are present before installation:

- 1 x Combuh LED Vanity Light Bar
- 1 x Mounting Plate
- 3 x Screws
- 3 x Expansion Anchors
- 3 x Wire Nuts

Product Details



Included:

1 x Vanity Light
1 x Mounting Plate
3 x Screws

3 x Expansion Anchors
3 x Wire Nuts

Specifications:

Power: 14 W
Lumens: 1250 LM
Installation: Hardwire

Color Temperature: 6000K
Dimmable: No

Figure 2: Included components for installation.

4. SPECIFICATIONS

Feature	Detail
Brand	Combuh
Model Number	4894773455992
Dimensions	24"L x 3.3"W x 4.3"H (60cm L x 11cm W x 11cm H)
Power Source	Corded Electric
Voltage	110 Volts
Wattage	14 Watts
Brightness	1250 Lumens
Color Temperature	6000 Kelvin (Cool White)
Material	Aluminum, SUS304 Stainless Steel, Acrylic
Finish Type	Chrome mirror shining base
Special Features	Not Dimmable, IP44 Anti-Fog
Installation Type	Wall Mount (Hardwire)
Recommended Use	Indoor use only: Bathroom, Washroom, WC, Living Room, Cabinet, Table

Ideal for 20-24" Mirror Widths

Note: Use as supplemental lighting



Figure 3: Product dimensions and key specifications.

5. INSTALLATION INSTRUCTIONS

Follow these steps for safe and proper installation. Ensure power is OFF at the circuit breaker before starting.

1. **Prepare the Mounting Surface:** Ensure the electrical junction box is securely installed in the wall.
2. **Attach Mounting Plate:** Secure the provided mounting plate to the junction box using the screws. Ensure it is level.
3. **Wire Connections:** Connect the electrical wires from the fixture to the house wiring using the wire nuts. Match live (black), neutral (white), and ground (green/bare copper) wires.

4. **Secure Fixture:** Align the light fixture with the mounting plate and secure it with the provided screws.

Easy 3-Step Install

Fits US junction boxes(Include)

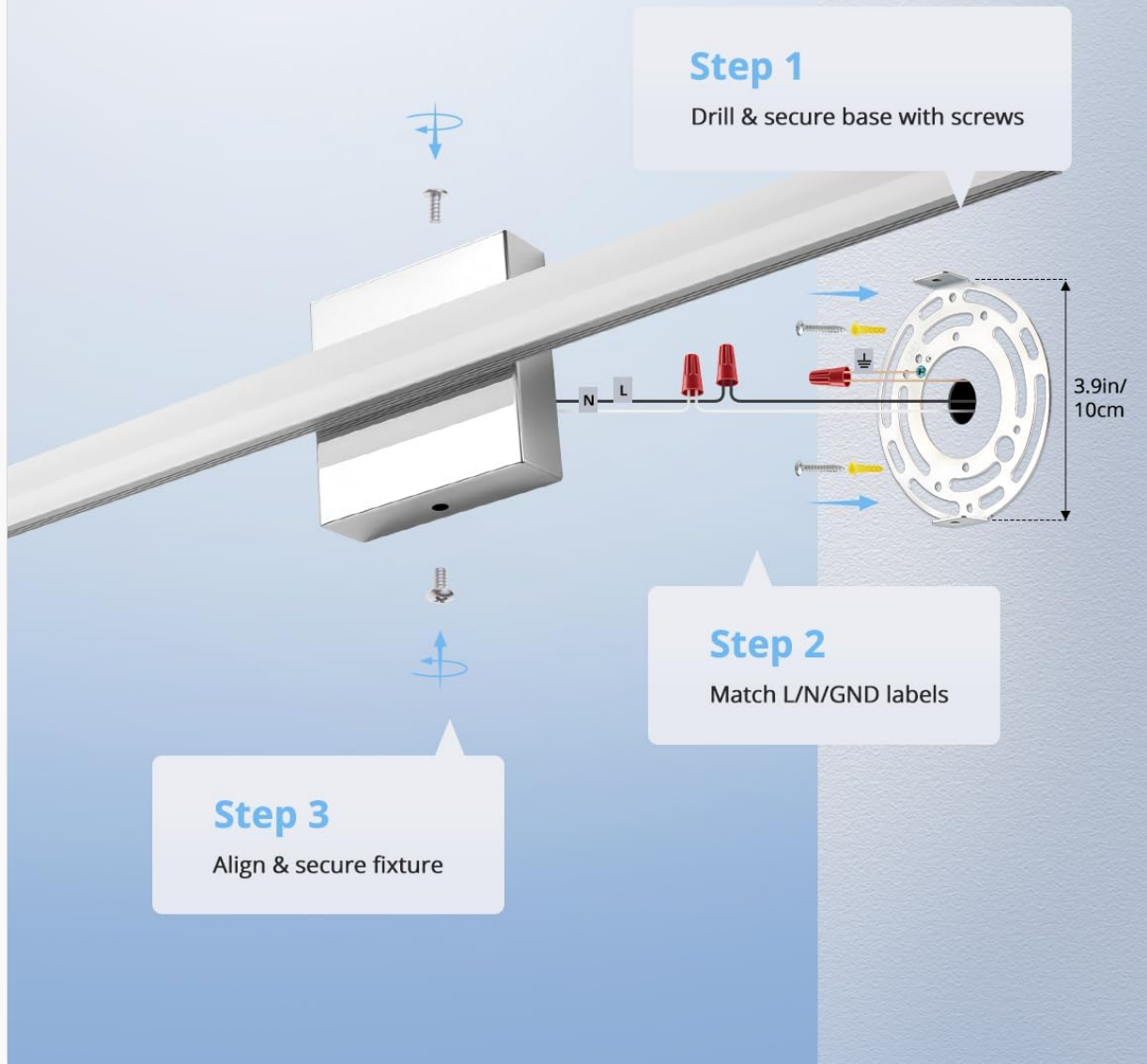


Figure 4: Step-by-step installation guide.

Your browser does not support the video tag.

Video 1: Installation overview of the Combuh Bathroom Light Fixtures by Combuh_usa.

Your browser does not support the video tag.

Video 2: Detailed installation and features of the Combuh 24 inch Modern LED Vanity Light by Combuh_usa.

6. OPERATION

Once installed, operate the light fixture using a standard wall switch. This fixture is not dimmable and will

provide a consistent 6000K cool white light.



Figure 5: The vanity light provides soft, uniform illumination for daily tasks.

7. MAINTENANCE

- **Cleaning:** To clean the fixture, ensure power is off. Wipe with a soft, damp cloth. Do not use abrasive cleaners or solvents.
- **LED Longevity:** The integrated LED module is designed for long-term use and does not require bulb replacement.
- **IP44 Rating:** The IP44 rating ensures resistance to splashes, making it suitable for bathroom environments.

IP44 Splash-Proof

Built for wet bathrooms



Figure 6: The IP44 splash-proof design ensures durability in wet environments.

8. TROUBLESHOOTING

Problem	Possible Cause	Solution
Light does not turn on.	No power supply; loose wiring; faulty switch.	Check circuit breaker. Verify all wire connections. Test the wall switch.
Light flickers.	Incompatible dimmer switch; loose wiring.	Ensure a standard ON/OFF switch is used (not dimmable). Check wiring connections.

Light is not bright enough.

Fixture used as primary light source in a large area.

This fixture is designed for auxiliary lighting. Consider additional lighting for larger spaces.

9. WARRANTY AND SUPPORT

This product comes with a manufacturer-and-seller-combination warranty. For specific warranty details or technical support, please refer to your purchase documentation or contact Combuh customer service.

For further assistance, please visit the [Combuh Store on Amazon](#).