

VOYEE XW-360

VOYEE Wireless Controller User Manual

Model: XW-360

INTRODUCTION

This manual provides detailed instructions for the setup, operation, and maintenance of your VOYEE Wireless Controller. Designed for compatibility with Microsoft Xbox 360/Slim and PC Windows 11/10/8/7, this controller offers an enhanced gaming experience with responsive controls and ergonomic design.

PRODUCT FEATURES

- **Wide Compatibility:** Seamlessly connects with Microsoft Xbox 360/Slim consoles and PC running Windows 11, 10, 8, or 7. A dedicated wireless receiver is required for connection.
- **Enhanced Game Control:** Features upgraded left and right triggers, highly sensitive joysticks, and responsive buttons for precise command execution without delay.
- **Immersive Gaming Experience:** Integrated rumble control provides automatic vibration feedback, adapting to in-game events for a more engaging experience.
- **Ergonomic Design:** Contoured grips are shaped to fit comfortably in your hands, reducing fatigue during extended gaming sessions. Enjoy freedom of movement with a wireless control distance of up to 30 feet.



Image: Front view of the VOYEE Wireless Controller.



Image: Transparent view of the VOYEE Wireless Controller highlighting the internal rumble motors.

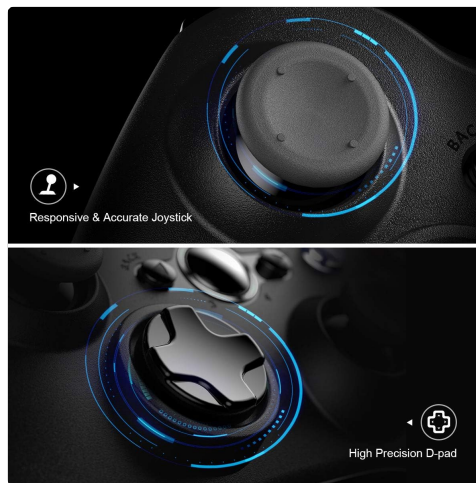


Image: Close-up of the responsive joystick and high-precision D-pad on the VOYEE Wireless Controller.



Image: Close-up of the action buttons (A, B, X, Y) and linear triggers (LT, RT) on the VOYEE Wireless Controller.

PACKAGE CONTENTS

Upon opening your VOYEE Wireless Controller package, you should find the following items:

- 1 x VOYEE Wireless Controller
- 1 x Wireless Receiver

- 1 x User Guide (this manual)

If any items are missing or damaged, please contact VOYEE customer support immediately.

SETUP

1. Battery Installation

The VOYEE Wireless Controller requires two (2) AA batteries for operation. Follow these steps to install them:

1. Locate the battery compartment on the back of the controller.
2. Press the release tab and open the battery cover.
3. Insert two AA batteries, ensuring the positive (+) and negative (-) terminals align with the markings inside the compartment.
4. Close the battery cover until it clicks securely into place.
5. Press the Home button on the controller to confirm power is on.

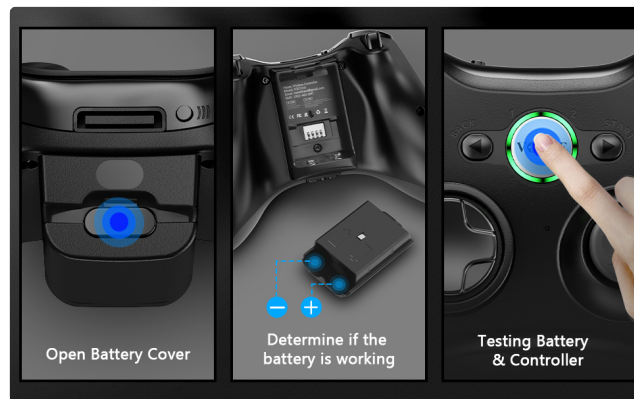


Image: Visual guide for opening the battery cover, inserting AA batteries, and testing the controller's power.

2. Connecting to Xbox 360 Console

To connect your VOYEE Wireless Controller to an Xbox 360 or Xbox 360 Slim console:

1. Ensure your Xbox 360 console is powered on.
2. Plug the wireless receiver into an available USB port on your Xbox 360 console. The receiver's indicator light will begin to flash.
3. Press the Home button on your VOYEE controller. The indicator light on the controller will also begin to flash.
4. Press and hold the sync button on the wireless receiver (usually a small button on the side or back of the receiver) until its light flashes rapidly.
5. Within 20 seconds, press and hold the sync button on the top of your VOYEE controller until its lights flash rapidly.
6. Once paired, the indicator light on the controller (one of the four quadrants around the Xbox button) will remain solid, indicating a successful connection.

Note: Each VOYEE wireless controller requires its own dedicated wireless receiver. If connecting multiple controllers, ensure you have enough USB ports and receivers.



Image: Step-by-step visual instructions for connecting the VOYEE Wireless Controller to an Xbox 360 console.

3. Connecting to PC (Windows 11/10/8/7)

To connect your VOYEE Wireless Controller to a PC:

1. Ensure your PC is powered on and the operating system is running.
2. Plug the wireless receiver into an available USB port on your PC. The receiver's indicator light will begin to flash.
3. The PC should automatically install the necessary drivers for the controller. This may take a few moments.
4. Press the Home button on your VOYEE controller. The indicator light on the controller will also begin to flash.
5. Press and hold the sync button on the wireless receiver until its light flashes rapidly.
6. Within 20 seconds, press and hold the sync button on the top of your VOYEE controller until its lights flash rapidly.
7. Once paired, the indicator light on the controller will remain solid. You can verify the connection and test the controller's functionality through your PC's Game Controllers settings (e.g., in Windows, search for "Set up USB game controllers").

Note: For Windows 7, 8, and 10 operating systems, the driver will typically install automatically. If pairing is unsuccessful, ensure your PC's Bluetooth or wireless adapter is enabled and drivers are up to date.



Image: Step-by-step visual instructions for connecting the VOYEE Wireless Controller to a PC.

OPERATING INSTRUCTIONS

Basic Controls

The VOYEE Wireless Controller features a standard layout familiar to Xbox 360 users:

- **Left and Right Analog Sticks:** Used for movement and camera control. Press down on the sticks for additional button inputs (L3/R3).
- **D-Pad (Directional Pad):** Provides precise directional input, often used for menu navigation or specific in-game actions.
- **A, B, X, Y Buttons:** Action buttons, typically color-coded (Green A, Red B, Blue X, Yellow Y) for easy identification.
- **Left and Right Bumpers (LB, RB):** Buttons located on the top front edge of the controller.
- **Left and Right Triggers (LT, RT):** Analog triggers located below the bumpers, offering pressure-sensitive input for actions like acceleration or firing.
- **Start Button:** Typically used to pause games or open in-game menus.
- **Back Button:** Often used to access secondary menus or return to previous screens.
- **Home Button (VOYEE Logo):** Powers the controller on/off, accesses the Xbox Guide menu on Xbox 360, or opens the Game Bar/similar features on PC.

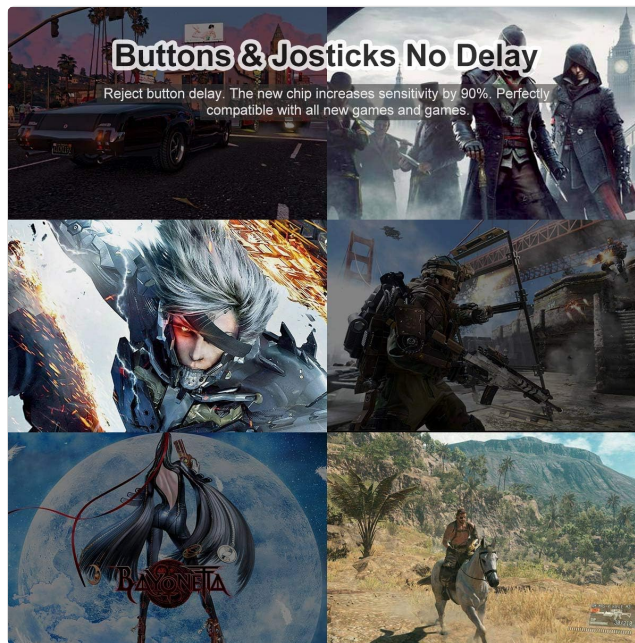


Image: The VOYEE Wireless Controller shown alongside various game screenshots, illustrating its use in different gaming scenarios.

Vibration Feedback

The VOYEE Wireless Controller features dual vibration motors that provide tactile feedback during gameplay. This feedback is automatically triggered by in-game events such as explosions, collisions, or specific actions, enhancing immersion.

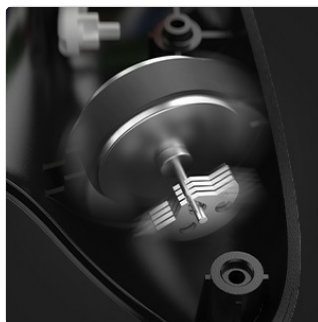


Image: Detailed view of the internal vibration motor within the controller.

Official Product Video

Your browser does not support the video tag.

MAINTENANCE

Proper care and maintenance will extend the life of your VOYEE Wireless Controller:

- **Cleaning:** Use a soft, dry cloth to wipe down the controller regularly. For stubborn dirt, slightly dampen the cloth with water or a mild cleaning solution. Avoid harsh chemicals or abrasive materials.
- **Storage:** Store the controller in a cool, dry place away from direct sunlight, extreme temperatures, and excessive moisture.
- **Battery Care:** Remove batteries from the controller if it will not be used for an extended period to prevent battery leakage and potential damage.
- **Avoid Drops:** Protect the controller from drops and impacts, which can damage internal components or external casing.

TROUBLESHOOTING

Problem	Possible Cause	Solution
Controller does not power on.	Low or dead batteries; incorrectly inserted batteries.	Replace with fresh AA batteries. Ensure batteries are inserted with correct polarity (+/-).
Controller does not connect/pair.	Receiver not properly plugged in; sync process failed; interference.	Ensure wireless receiver is securely plugged into a USB port. Repeat the pairing process (see Setup section). Move closer to the console/PC. Avoid other 2.4GHz devices if possible.
Input lag or unresponsive buttons/joysticks.	Low battery; wireless interference; distance from receiver.	Replace batteries. Reduce distance between controller and receiver. Ensure no large metal objects are blocking the signal.
Vibration not working.	Game does not support vibration; vibration feature disabled in game/system settings.	Check game settings and console/PC settings to ensure vibration is enabled. Not all games support vibration feedback.

If you encounter issues not listed here, please refer to the Warranty and Support section for contact information.

SPECIFICATIONS

Model Number:	XW-360
Brand:	VOYEE
Dimensions (L x W x H):	6.1 x 4.33 x 2.17 inches
Item Weight:	8.4 ounces

Power Source:	2 x AA Batteries (not included)
Connectivity:	2.4GHz Wireless (via included receiver)
Wireless Range:	Up to 30 feet (approx. 9 meters)
Compatible Devices:	Xbox 360, Xbox 360 Slim, PC (Windows 11/10/8/7)



Image: The VOYEE Wireless Controller with its approximate dimensions indicated.

WARRANTY AND SUPPORT

VOYEE products are manufactured to high quality standards. For warranty information, technical support, or any inquiries regarding your VOYEE Wireless Controller, please contact our customer service team.



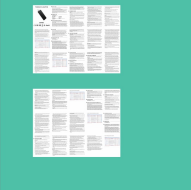
Contact Information:

- **Email:** Refer to product packaging or the VOYEE official website for the most current email address.
- **Phone:** Refer to product packaging or the VOYEE official website for the most current phone number.
- **Online Support:** Visit the VOYEE brand store on Amazon or their official website for FAQs and additional resources.

Please have your product model number (XW-360) and purchase details ready when contacting support.

Related Documents - XW-360

	<p>VOYEE S03 Wireless Controller Instruction Manual for Nintendo Switch, PC, and Android</p> <p>Comprehensive instruction manual for the VOYEE S03 Wireless Controller, detailing features, connection modes for Nintendo Switch, PC, and Android, adjustable vibration, TURBO function, programmable buttons, charging, and troubleshooting.</p>
	<p>VOYEE Wireless Controller User Manual and Setup Guide</p> <p>Comprehensive user manual for the VOYEE Wireless Controller, detailing setup, connection modes (PC, Android, iOS, Switch), advanced features like M1/M2 key mapping, LED adjustments, vibration control, and TURBO function. Includes safety information and troubleshooting tips for optimal gaming experience.</p>

	<p><u>VOYEE N-S Wireless Controllers 503 User Manual</u></p> <p>Discover the VOYEE N-S Wireless Controllers 503 User Manual. Learn how to connect, charge, and customize your gamepad for Nintendo Switch, PC, and Android devices. Includes detailed instructions on button mapping, turbo functions, and troubleshooting for an optimized gaming experience.</p>
	<p><u>Test Verification of Conformity for Wireless Controller X107</u></p> <p>This document verifies the conformity of the wireless controller model X107, manufactured by Dongguan Chenhao Electronic Technology Co., LTD., with various European safety, health, EMC, and radio standards.</p>
	<p><u>CIPON Wireless Adapter User Guide and FAQ</u></p> <p>Comprehensive user guide and FAQ for the CIPON Wireless Adapter, providing installation, troubleshooting, and driver information for PC and Xbox 360 compatibility.</p>