



[Manuals.plus](#) /

› [BestMassage](#) /

› BestMassage Shiatsu Massage Chair: Full Body Recliner with Zero Gravity - Instruction Manual

BestMassage Shiatsu Massage Chairs

BestMassage Shiatsu Massage Chair Instruction Manual

Model: Shiatsu Massage Chairs

Brand: BestMassage

[Safety Information](#)

[Setup](#)

[Operation](#)

[Maintenance
& Support](#)

[Troubleshooting](#)

[Specifications](#)

[Warranty](#)

INTRODUCTION

Thank you for choosing the BestMassage Shiatsu Massage Chair. This manual provides essential information for the safe and effective use, setup, operation, and maintenance of your new massage chair. Please read this manual thoroughly before use and retain it for future reference.

8 Massage Points

14 Acupoint massager



Image: The BestMassage Shiatsu Massage Chair, showcasing its design and presence in a home environment.

SAFETY INFORMATION

For your safety and to prevent damage to the product, observe the following precautions:

- Always read and follow the assembly instructions carefully. Do not use the chair until it is fully assembled.
- Be cautious when adjusting the chair's position and features to avoid injury.
- Do not exceed the maximum weight capacity of 250 pounds.
- Keep the chair on a stable, level surface to prevent tipping.
- This product is intended for use by adults 18 years and older.

SETUP AND ASSEMBLY

The BestMassage Shiatsu Massage Chair features a split three-box packaging design for easier transportation and handling. Follow the detailed assembly instructions provided in the separate assembly guide to ensure proper setup.

Dimensions

UNIT: INCH



Image: A diagram illustrating the dimensions of the massage chair in both upright and reclined positions, measured in inches.

Moving the Chair

The chair is designed with two rollers on the bottom for easy movement. To move the chair, gently tilt it back onto its rollers and push it to the desired location. To fix the chair in place, screw the knob on the right side of the left lower wheel to the right until it is secure.



6 Massage Techniques

Experience the wave-like kneading sensation



Kneading



Shiatsu



Tapping



Tapping



Kneading&Tapping



Kneading&Tapping

Image: A composite image highlighting the easy-to-move wheels, the USB charging port, foot rollers, and a height suitability chart for the massage chair.

OPERATING INSTRUCTIONS

Your BestMassage Shiatsu Massage Chair offers a variety of features for a personalized massage experience. Use the control panel located on the left side of the chair to select your desired settings.

Control Panel & USB Charging

USB charging port

To charge your phone



Image: A detailed view of the control panel, showing various buttons for massage functions and the integrated USB charging port.

The control panel allows you to select different massage modes, adjust intensity, and activate specific features. A convenient USB charging port is also available on the control panel to charge your electronic devices during your massage.

Zero Gravity Mode

Activate the zero-gravity mode for a deeply relaxing experience. This position elevates your legs above your heart, minimizing the strain of gravity on your vertebrae and promoting full body relaxation.



Image: An overview of the chair's features, including air pressure massage, zero gravity mode, massage techniques, waist heating, massage programs, and foot rollers.

Massage Features

- **8 Fixed Point Module Massages:** The chair features 8 massage points and 14 acupoint massagers designed to target specific areas of your back.

AIRBAG MASSAGE

Full Body Air Compression



Image: A visual representation of the 8 massage points and 14 acupoint massagers integrated into the chair's backrest and footrest.

- **Airbag Massage:** Enjoy full body air compression massage with adjustable airbag function. Airbags are strategically placed to provide compression to various body parts.



The image is a composite graphic. On the left, a stylized human back is shown in a warm, orange-red glow. Two yellow, serpentine heating elements are overlaid on the back, one on the upper back and one on the lower back. On the right, a black massage chair is shown from a top-down perspective. The chair's backrest and seat are upholstered in a light brown material. Two yellow, serpentine heating elements are visible on the backrest, mirroring the ones in the anatomical diagram. The background is a dark blue with a subtle grid pattern.

Heat Therapy

Full Body Air Compression

The Benefit of Heating Therapy

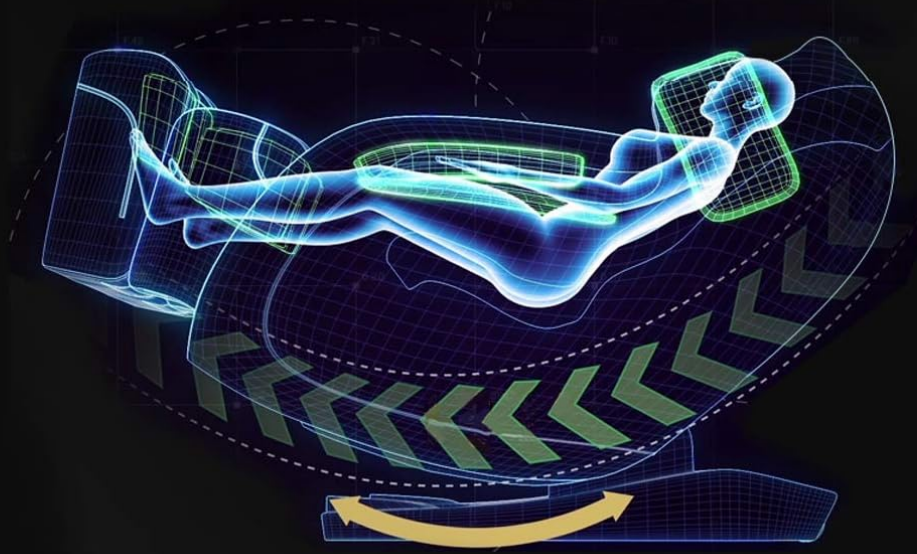
- 1.Promote the blood circulation
- 2.Ease the pains of joints

Image: A diagram illustrating the full body air compression massage, showing airbags targeting arms, shoulders, calves, and feet.

- **Heat Therapy:** Controlled heating elements provide soothing heat therapy to promote blood circulation and ease joint pain.

Zero gravity position

Minimizing the strain of gravity on your vertebrae



Easy to move

4 wheels design
can be locked

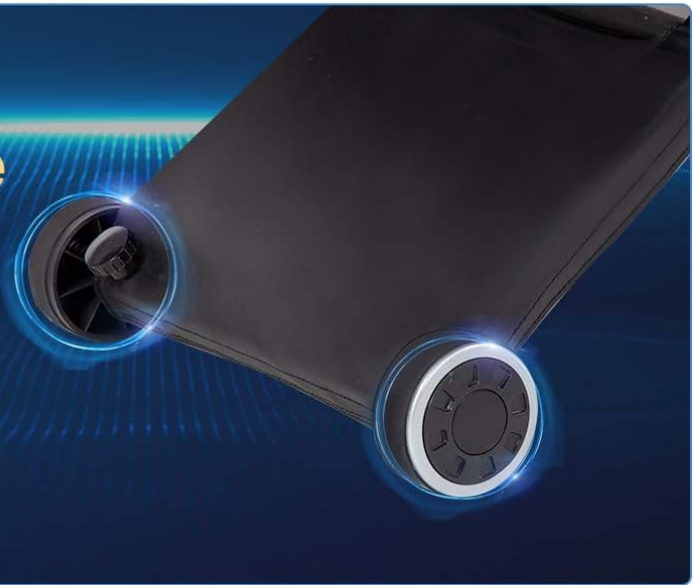


Image: A diagram highlighting the heat therapy function, showing heating elements in the backrest and listing benefits such as promoting blood circulation and easing joint pain.

- **Foot Rollers:** Dual foot rollers are located in the feet area to soothe your sole and heel.

Foot Rollers

The foot roller can sooth your sole and heel



Image: A detailed view of the foot rollers designed to massage the soles and heels of the feet.

- **6 Massage Techniques:** Experience various massage techniques including Kneading, Shiatsu, Tapping, Tlapping, Kneading & Tapping, and Kneading & Tlapping.



Image: A visual guide to the six available massage techniques: Kneading, Shiatsu, Tapping, Tlapping, Kneading & Tapping, and Kneading & Tlapping.

- **Automatic Massage Methods:** Choose from 3 different automatic massage programs for a convenient and varied massage experience.
- **Adjustable Settings:** Customize your massage by adjusting power speed and airbag pressure to suit your preferences.

MAINTENANCE

To ensure the longevity and optimal performance of your massage chair, follow these maintenance guidelines:

- **Cleaning:** Spot clean the chair's surface as needed. Use a soft, damp cloth and mild soap for cleaning. Avoid harsh chemicals or abrasive cleaners.
- **Storage:** When not in use for extended periods, store the chair in a cool, dry place away from direct sunlight.
- **Inspection:** Periodically check all connections and components for any signs of wear or damage. If any issues are found, contact customer support.

TROUBLESHOOTING

If you encounter any issues with your BestMassage Shiatsu Massage Chair, refer to the following common problems and solutions:

Problem	Possible Cause	Solution
Rollers feel too intense or painful	Direct contact with rollers, individual sensitivity.	Place a thin cushion or blanket between your body and the chair's backrest to soften the massage. Adjust massage intensity settings.
Heat pads become excessively hot	Malfunction in heating element or control.	Immediately turn off the chair and unplug it. Do not use the heat function. Contact customer support for assistance.
Chair stops during operation or functions are unresponsive	Power interruption, internal component malfunction, loose connection.	Check if the power cord is securely plugged in. Try unplugging and re-plugging the chair after a few minutes. If the issue persists, contact customer support.
Foot massage does not turn off or other functions fail to activate	Control panel malfunction, internal wiring issue.	Power cycle the chair by unplugging it for 5 minutes and then plugging it back in. If the problem continues, contact customer support.

For issues not listed above or if troubleshooting steps do not resolve the problem, please contact BestMassage customer support.

SPECIFICATIONS

Feature	Detail
---------	--------

Feature	Detail
Brand	BestMassage
Model Name	Full Body and Recliner Zero Gravity Massage Chair
Item Model Number	Shiatsu Massage Chairs
Color	Black
Material	Leather, Foam
Product Dimensions	55.12"D x 27.95"W x 41.34"H
Item Weight	41.4 pounds
Maximum Weight Recommendation	250 Pounds
Special Features	Arm Rest, Cushion Availability, Foot Roller, Zero Gravity, Heat Therapy, Air Massage
Reclining Position Count	2
Leg Style	Wheels
Product Care Instructions	Spot Clean
UPC	848837099954, 195030018061

WARRANTY & SUPPORT

BestMassage is committed to customer satisfaction. We guarantee you will be satisfied with your massage chair. If you are not satisfied, please contact us for a 100% refund.

For any questions, concerns, or support needs regarding your massage chair, please feel free to contact our customer service team. Please refer to your purchase documentation for specific warranty details and contact information.