

Manuals+

[Q & A](#) | [Deep Search](#) | [Upload](#)

[manuals.plus](#) /

- › [Barkan](#) /
- › [Barkan BM464 TV Wall Mount Instruction Manual](#)

Barkan BM464

Barkan BM464 TV Wall Mount Instruction Manual

Model: BM464 | Brand: Barkan

INTRODUCTION

This manual provides detailed instructions for the safe and proper installation and operation of your Barkan BM464 Dual Arm Full Motion Articulating TV Wall Mount. Please read all instructions carefully before beginning installation and retain this manual for future reference.

SAFETY INFORMATION

Proper installation is crucial for the safety and stability of your television. Failure to follow these instructions may result in property damage or personal injury.

- **Weight Capacity:** Do not exceed the maximum weight capacity of 132 lbs (60 kg).
- **Screen Size:** This mount is designed for TVs between 13 and 90 inches.
- **Wall Type:** Ensure the mounting surface is capable of supporting the combined weight of the mount and your TV. Refer to the 'Wall Compatibility' section for details.
- **Child Safety:** All Barkan TV mounts include a Fall Proof system to prevent accidental disengagement of the screen, enhancing child safety.
- **Professional Installation:** If you are unsure about the installation process, consult a qualified professional.

WHAT'S IN THE BOX

Verify that all components are present before beginning installation:

- TV Mount
- Hardware Kit (screws, anchors, washers, spacers)
- Instruction Manual



Image: Detailed view of the Barkan BM464 hardware kit, including wall screws, wall anchors, M8, M6, M4 TV mounting screws, metal washers, and plastic spacers.

SPECIFICATIONS

Feature	Specification
Model Number	BM464
Screen Size Compatibility	13 - 90 inches
Maximum Load Capacity	132 lbs (60 kg)
VESA Compatibility	200x100, 200x200, 300x300, 300x400, 400x200, 400x300, 400x400, 600x400 mm and non-VESA up to 600x400 mm
Tilt Angle	-5° to 15° (tool-free)

Swivel Angle	180° (near screen connection plate)
Rotation Angle	180° (near wall, double arm)
Fold Angle	360°
Leveling Adjustment	±5°
Extension from Wall	Min. 3.2 inches (8 cm) to Max. 17.8 inches (45 cm)
Material	Metal
Product Dimensions	14.57 x 10.43 x 3.74 inches
Item Weight	12.1 pounds

Quality & Safety Above All It all starts from the smallest detail...

High quality hardware

Where safety and quality are top priorities, we have developed our own unique wall anchor and screws



Barkan's Hardware Kit

Divided and marked hardware kit for easy orientation throughout the assembly process



TV screws compatible with 90% of popular TVs

If your screen requires different screen-connection screws, please purchase them in your local hardware store or contact us at sales.usa@barkanmounts.com

Image: Technical diagram illustrating the dimensions, tilt range (0-15 degrees), swivel range (140 degrees), leveling (±5 degrees), and extension from the wall (3.2" to 17.8") of the Barkan BM464 TV mount.

SETUP AND INSTALLATION

Required Tools (Not Included)

- Drill (1/4" - 6mm, 3/8" - 10mm bits for concrete/wood)
- Level
- Safety Glasses
- Stud Finder (for wood stud installation)

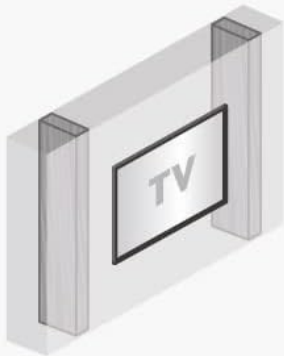


Included in the packaging are **assembly instructions, warnings and safety instructions**. If they are missing, you are required to download them from our website and to assemble precisely according to them.

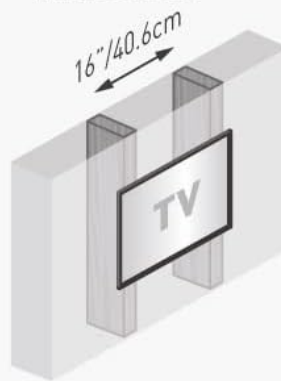
Wall compatibility



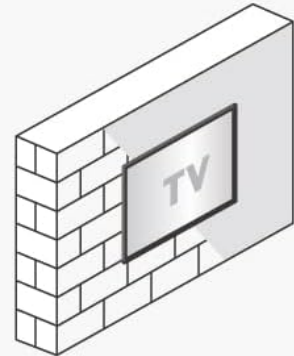
Drywall/
gypsum/
plaster



Drywall with
wood studs



Concrete blocks/
concrete wall



Required

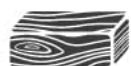
Drill



1/4" - 6mm
3/8" - 10mm



5/32" - 4mm



Level



Safety glasses



Stud finder



Image: Illustration of required tools for installation, including a drill with various bits, a level, safety glasses, and a stud finder.

Wall Compatibility

This mount is compatible with:

- Drywall with wood studs (16" / 40.6cm spacing)
- Concrete blocks / concrete wall

Not compatible with: Drywall/gypsum/plaster without wood studs.

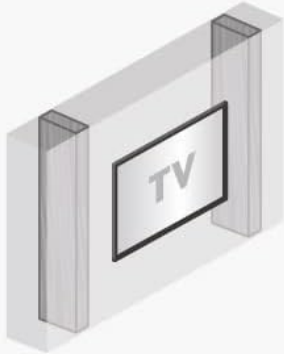


Included in the packaging are **assembly instructions, warnings and safety instructions**. If they are missing, you are required to download them from our website and to assemble precisely according to them.

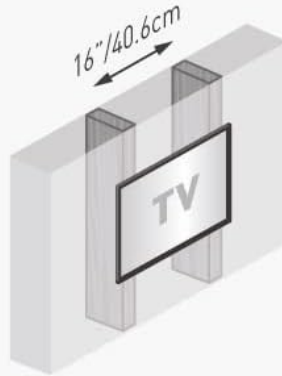
Wall compatibility



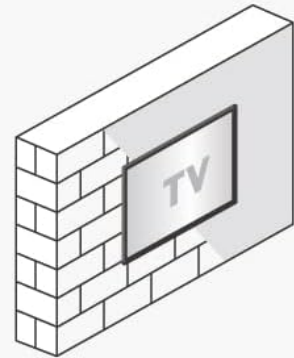
Drywall/
gypsum/
plaster



Drywall with
wood studs



Concrete blocks/
concrete wall



Required

Drill

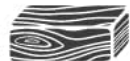


1/4" – 6mm

3/8" – 10mm



5/32" – 4mm



Level



Safety glasses



Stud finder



Image: Diagram showing compatible wall types: drywall with wood studs and concrete walls. It also indicates incompatibility with drywall without studs.

Assembly Steps (1-2-3)

1. **Attach Adapters to TV:** Connect the TV plate (adapters) to the rear side of your television using the appropriate screws from the hardware kit. This mount features a patented mechanism that accommodates both flat and curved TVs, as well as those with unique back structures, without needing spacers.
2. **Install Bracket on Wall:** Secure the wall bracket to your chosen wall location. Ensure it is level and mounted directly into wood studs or concrete using the provided hardware. The broad double-arm configuration connects directly to the studs for enhanced stability.
3. **Snap TV onto Bracket:** Carefully lift your TV and snap it onto the installed wall bracket. Ensure the Fall Proof system engages correctly to prevent accidental disengagement.

Additional value for money

Easy assembly **As easy as 1-2-3**



Drilling template included

- ✓ Easy installation
- ✓ Accurate
- ✓ Fast



Image: Three-step visual guide for assembly: 1. Connect TV plate to TV, 2. Install wall bracket, 3. Snap TV onto bracket.

VESA and Backscreen Connection Positioning

The mount supports various VESA patterns. If your TV's backscreen connections are not included in the standard positions, please contact Barkan support.

Backscreen connection positioning options

All TV backscreen connections are in millimeters (Width x Height).

There are a few sizes of TV plates available.

The backscreen connections in position 1 are included in some of the different TV plates, according to their size, and do not require the use of the 4 adapters (marked in blue).

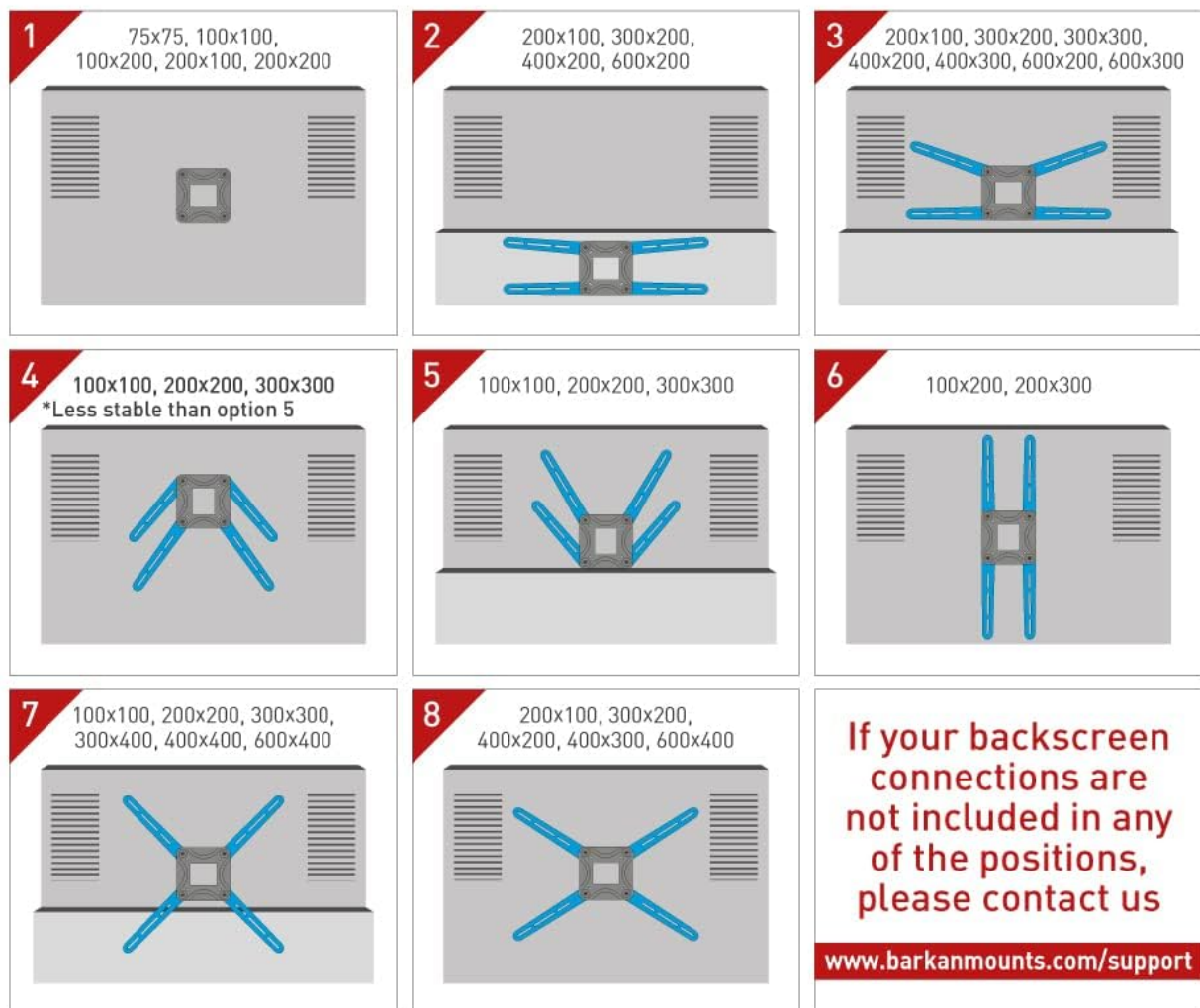


Image: Diagrams illustrating various VESA and non-VESA backscreen connection positioning options for the TV mount.

OPERATING AND ADJUSTMENTS

The Barkan BM464 mount offers full motion capabilities for optimal viewing angles.

- **Tilt:** Adjust the screen vertically from -5° to 15° without tools.
- **Swivel:** Rotate the screen horizontally up to 180° at the screen connection plate.
- **Rotation:** The double arm allows for 180° rotation near the wall.
- **Extension:** Extend the TV from the wall up to 17.8 inches (45 cm) for flexible positioning.
- **Leveling:** Fine-tune the screen's horizontal level by ±5°.

To adjust, gently push or pull the TV to the desired angle. The 'Touch & Move' feature allows for easy repositioning.

Full Motion

PREMIUM

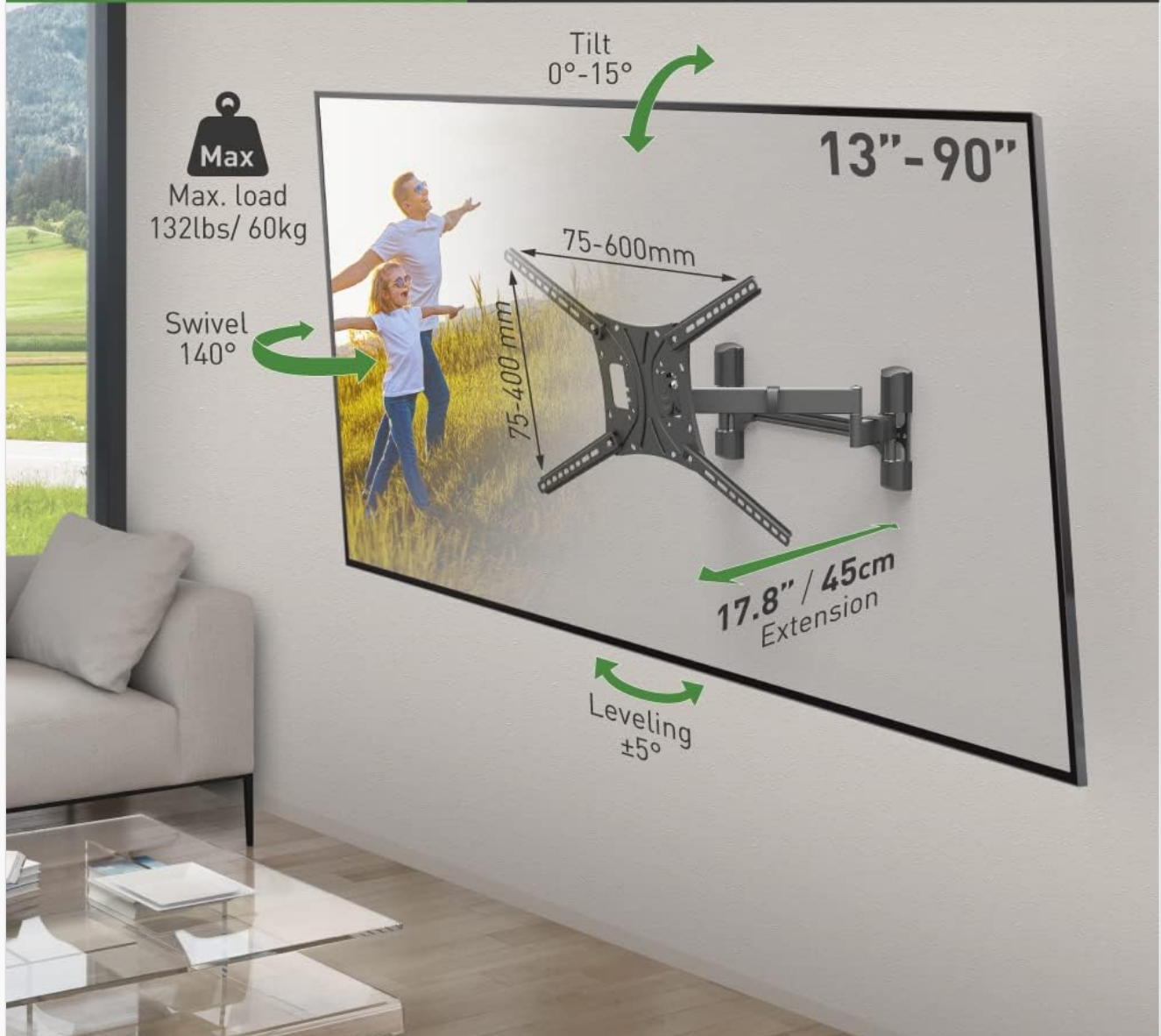


Image: Diagram showing the full motion capabilities of the mount, including tilt (0-15 degrees), swivel (140 degrees), leveling (±5 degrees), and extension (17.8 inches).

Corner Installation

The articulating design makes this mount suitable for corner installations, providing a wide range of viewing angles. Functionality may vary, with a maximum screen size of 55" typically recommended for optimal corner positioning.

Suitable for corner installation

The secret for the ultimate viewing experience: “line of sight” is perpendicular (90°) to the screen



Wide range of viewing angles for various sitting positions



functionality may vary, max. screen size - 55"



Safety & Stability – connects directly to the studs

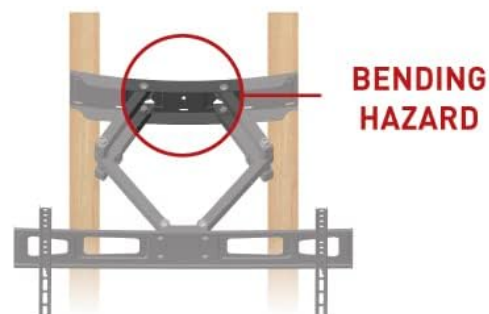
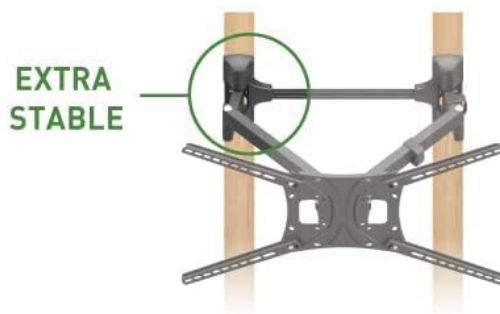


Image: Illustration demonstrating the suitability of the Barkan BM464 mount for corner installation, showing various viewing angles.

MAINTENANCE

To ensure the longevity and proper function of your Barkan TV wall mount, follow these simple maintenance guidelines:

- **Regular Inspection:** Periodically check all screws and connections to ensure they remain tight and secure.
- **Cleaning:** Wipe the mount with a soft, dry cloth. Avoid abrasive cleaners or solvents.
- **Lubrication:** Moving parts are designed for smooth operation. If any stiffness occurs, a small amount of silicone-based lubricant can be applied to pivot points.

TROUBLESHOOTING

If you encounter issues with your Barkan BM464 TV mount, consider the following:

- **TV Tilting Downward:** If your TV continuously tilts down, ensure that the tilt bolts are sufficiently tightened. For heavier TVs, especially those approaching the maximum weight limit or with lower mounting holes, ensure all

adjustments are securely fastened. If the issue persists, verify that the TV's weight does not exceed the mount's capacity and that the installation is correct.

- **Difficulty Moving Mount:** Check for any obstructions or loose cables. Ensure all pivot points are free from debris. If stiffness persists, apply a small amount of silicone lubricant.
- **Mount Feels Unstable:** Re-check all wall mounting screws and TV attachment screws for tightness. Confirm that the mount is installed into appropriate wall studs or concrete as per instructions.

WARRANTY

The Barkan BM464 TV Wall Mount comes with a **Lifetime Limited Warranty**. This warranty covers defects in materials and workmanship under normal use. For specific terms and conditions, please refer to the warranty documentation included with your product or visit the Barkan website.

Greatest value for money

Kids Safety

WARRANTY LIFETIME WARRANTY

PATENTED

**Patent No. USA - 10,145,503
China - ZL 2015 2 0838239.6**

**Tested at:
397_{lbs}/180_{kg}**

Extra safe

Fall proof

Cable management

Image: Visual highlighting the lifetime warranty, patented design, and safety features like fall protection and cable management.

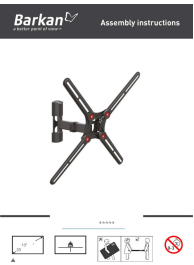

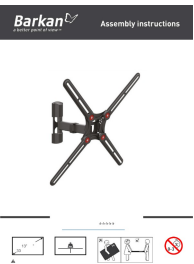

SUPPORT



For additional assistance, frequently asked questions, video demonstrations, or to contact customer service, please visit the official Barkan website. Our customer service experts are available to help with any inquiries you may have.

Online Resources: www.barkanmounts.com


© 2025 Barkan. All rights reserved.

Related Documents - BM464

	<p>Barkan BM331 TV Wall Mount Assembly Instructions Full Motion Mount</p> <p>Comprehensive assembly instructions for the Barkan BM331 Full Motion TV Wall Mount. Learn how to safely install your TV (13"-65") with this versatile, rotating, folding, and tilting mount. Includes parts list, required tools, and step-by-step guidance.</p>
	<p>Barkan WGP-BASIC-BNG-2202-Online Monitor Desk Mount Assembly and Safety Instructions</p> <p>Comprehensive safety and assembly instructions for the Barkan WGP-BASIC-BNG-2202-Online monitor desk mount, covering installation, usage guidelines, and important warnings.</p>
	<p>Barkan BM331 Full Motion TV Wall Mount Assembly Instructions</p> <p>Comprehensive assembly instructions for the Barkan BM331 Full Motion TV Wall Mount, covering installation, safety precautions, parts list, and VESA compatibility. Suitable for TVs 13-65 inches.</p>
	<p>Barkan Extra Long TV Wall Mount Installation Guide</p> <p>Comprehensive instructions for installing the Barkan Extra Long TV Wall Mount, covering safety precautions, parts identification, required tools, and step-by-step assembly for various TV sizes and wall types.</p>

	<p>Barkan BM343XL Extra Long TV Wall Mount Assembly Instructions and User Manual</p> <p>Comprehensive assembly instructions and user manual for the Barkan BM343XL Extra Long TV Wall Mount. This guide covers installation, safety precautions, and usage details for mounting TVs from 13" to 65".</p>
	<p>Barkan AM464L TV Wall Mount with Integrated Antenna Assembly Instructions</p> <p>Comprehensive assembly and installation guide for the Barkan AM464L Full Motion TV Wall Mount with Integrated Amplified HDTV Indoor Antenna. This document provides step-by-step instructions, safety warnings, and part lists for securely mounting your TV.</p>

Documents - Barkan – BM464



[\[pdf\] Instructions](#)

PowerPoint Presentation Eitan Azar Barkan Mounts TV BM464 Assembly Instructions Online 2304 drive google file d 1 OvYQQJazRaTFo8a9ReHE7DfZeFfPFDI view usp share link |||

TV Wall Mount Tilt Swivel Page 1 **BM464**-Assembly instructionsOnline-2401

Download Assembly Instructions with Text For more information: barkanmounts.com

If you are satisfied with the product, please give us a 5 stars rating on the website you bought it from. If you are not satisfied please contac...

lang:en score:36 filesize: 2.63 M page_count: 12 document date: 2024-01-15

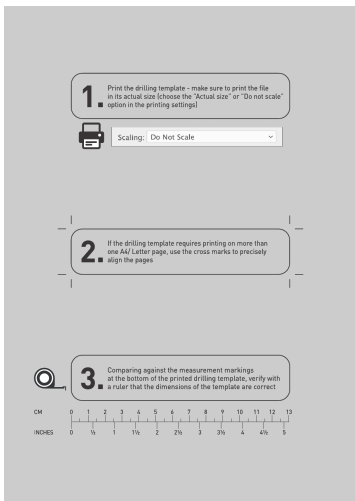


[\[pdf\]](#) Instructions Warranty Catalog

Eitan Azar Barkan 13 to 90 Full Motion 4 Movement Dual Arm Flat Curved TV Wall Mount Black Extra Stable Very Low Profile Instructions Assembly a Better Point of View BM464 818212002268

0818212002268 1005135644 e8223ee2 1693 43e8 a71d 7fd4c17a564e images thdstatic catalog Images e8 |||

Page 1 TV Wall Mount Full Motion: Rotate, Fold, Swivel Tilt For more information: barkanmounts.co ... d please contact us at <https://www.barkanmounts.com/support> and we will solve the problem for you. **BM464**-MAN-ONL-08_2109 TV Size 13 -90 33cm-229cm TV Weight US EU 132lbs 60kg CAUTION This Mount i...
lang:es score:27 filesize: 2.9 M page_count: 15 document date: 2021-09-05



[\[pdf\]](#) Installation Guide Guide Catalog

BM331 template 2103 Administrator Barkan 13 to 90 Full Motion 4 Movement Dual Arm Flat Curved TV Wall Mount Black Extra Stable Very Low Profile Installation Guide a Better Point of View BM464

818212002268 0818212002268 1005135644 38bd4f5d 8070 4ea8 a019 b93031aec391 images thdstatic catalog Images 38 |||

CM 0 1 2 3 4 5 6 7 8 9 10 11 INCHES 0 1 1 2 2 3 3 4 4 EN Drilling Guide Sheet ES Hoja guía de perforacion IT Maschera di foratura FR Guide de Perage DE Bohranleitungsblatt RU 16 /40.6cm 12 13 14 15 16 17 18 19 20 21 22 23 24 25 26 27 28 5 5 6 6 7 7 8 8 9 9 10 10 11 29...

lang:es score:19 filesize: 868.55 K page_count: 4 document date: 2021-05-02