

Manuals+

[Q & A](#) | [Deep Search](#) | [Upload](#)

[manuals.plus](#) /

> [KOKODI](#) /

> [KOKODI LCD Writing Tablet 10-Inch User Manual](#)

KOKODI KOKODI 10-Inch

KOKODI LCD Writing Tablet 10-Inch User Manual

Model: KOKODI 10-Inch | Brand: KOKODI

1. INTRODUCTION

Thank you for choosing the KOKODI LCD Writing Tablet. This device offers a paperless, mess-free solution for drawing, writing, and learning. Designed with eye protection technology, it is suitable for extended use. This manual provides essential information for setting up, operating, and maintaining your tablet.



Image: KOKODI 10-inch LCD Writing Tablet in blue, displaying a vibrant drawing of a bee and various shapes, highlighting its colorful display capabilities.

2. PRODUCT FEATURES

- **Eye Protection LCD Screen:** Utilizes pressure-sensitive technology for a glare-free, radiation-free, and comfortable viewing experience.
- **Environmental & Reusable:** The tablet's battery lasts 3-6 months and is replaceable, allowing for approximately 100,000 writings, reducing paper waste.
- **Safety Design:** The battery compartment is secured with a screw for child safety.
- **Portable & Durable:** Made from durable plastic with rounded corners, shock-resistant and drop-resistant. Lightweight (8.8 ounces) and thin (0.24 inches), ideal for travel.
- **Mess-Free Creativity:** Creates colorful lines of varying thickness based on pressure. Easy one-button erase and a lock function to preserve drawings.

3. SETUP

1. **Unpack:** Carefully remove the KOKODI LCD Writing Tablet and stylus from its packaging.
2. **Initial Screen Clear:** Upon first use, the screen may show some marks due to transportation. Locate the erase button (usually a circular button at the bottom center of the screen) and press it to clear the screen. If the screen does not clear, ensure the lock switch on the side is in the "unlocked" position.
3. **Stylus Attachment:** The stylus can be stored in the designated holder at the top of the tablet. A tether is included to attach the stylus to the tablet, preventing loss.

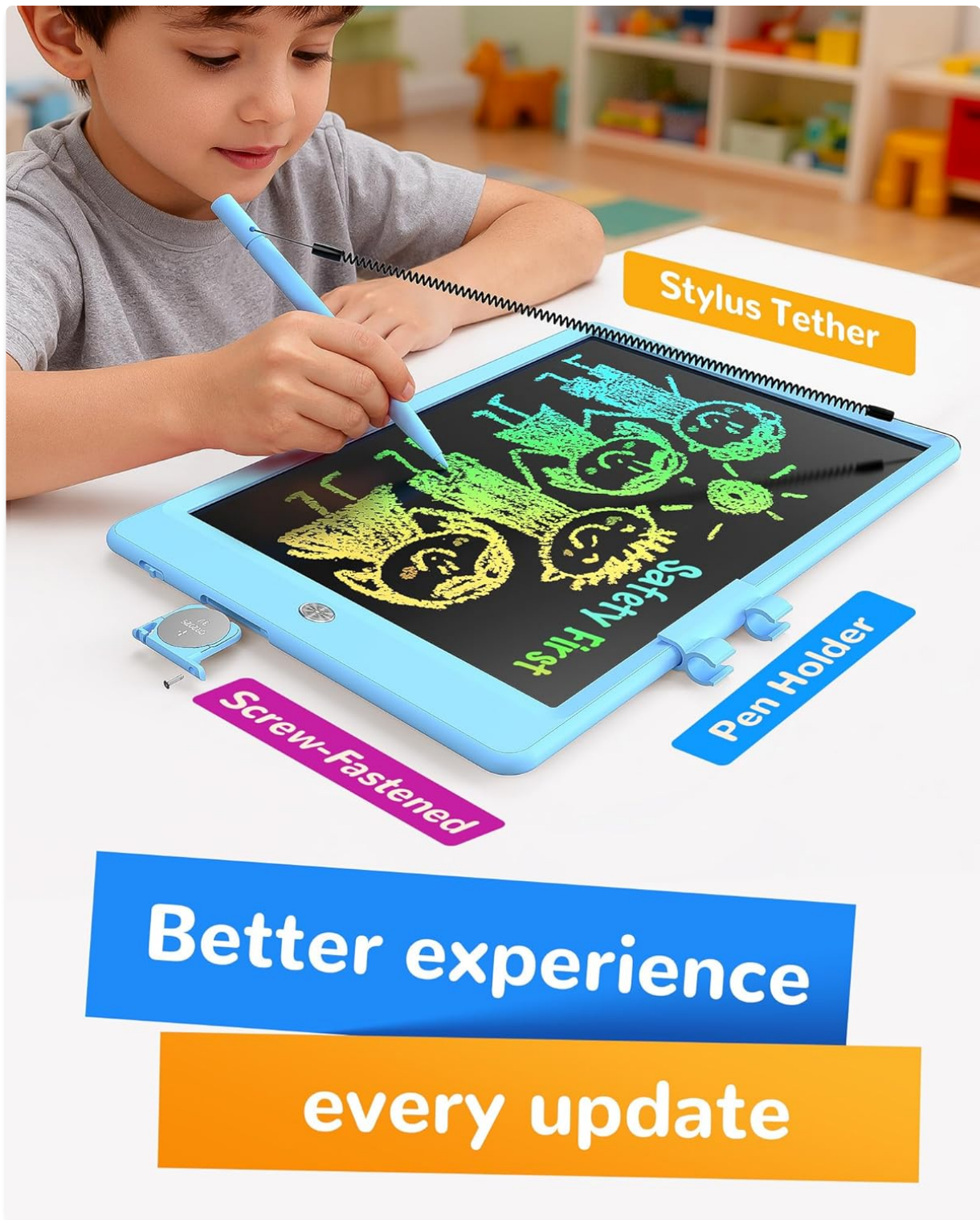


Image: A child drawing on the KOKODI LCD Writing Tablet, illustrating the stylus tether and the secure, screw-fastened battery compartment for enhanced safety.

4. OPERATING INSTRUCTIONS

4.1 Drawing and Writing

- Use the provided stylus to draw or write directly on the LCD screen.
- The screen is pressure-sensitive; applying more pressure will result in thicker lines, while lighter pressure creates thinner lines.
- You can also use your fingernail or any non-abrasive, hard object to draw.

4.2 Erasing Content

- To clear the screen, press the circular erase button located at the bottom center of the tablet. The screen will clear instantly.
- Ensure the lock switch on the side of the tablet is in the "unlocked" position for the erase function to work.

4.3 Lock Function

- The tablet features a lock switch on its side. Slide this switch to the "locked" position to prevent accidental erasure of your drawings.
- When locked, pressing the erase button will not clear the screen. Slide the switch back to "unlocked" to enable the erase function.

4.4 Battery Information

- The tablet is powered by a replaceable Lithium Ion battery, offering 3-6 months of battery life.
- No charging or plugging in is required for operation.
- To replace the battery, unscrew the battery compartment cover on the side of the tablet.

5. MAINTENANCE

- **Cleaning:** Wipe the screen and body with a soft, dry cloth. Avoid using liquid cleaners or abrasive materials.
- **Storage:** Store the tablet in a cool, dry place away from direct sunlight and extreme temperatures.
- **Handling:** While durable, avoid dropping the tablet from significant heights or applying excessive force to the screen. The LCD display screen does not have scratch prevention. Use only the provided stylus or similar non-damaging tools for drawing.

6. TROUBLESHOOTING

Problem	Solution
Screen does not clear when erase button is pressed.	Check the lock switch on the side of the tablet. Ensure it is in the "unlocked" position.
Lines are faint or not appearing.	Ensure you are using the stylus or a suitable object with adequate pressure. The tablet performs best under sufficient light. If the issue persists, the battery may need replacement.
Screen shows marks upon opening.	This can occur during transportation. Simply press the erase button to clear the screen.

7. SPECIFICATIONS

- **Product Dimensions:** 9.8 x 6.9 x 0.24 inches
- **Item Weight:** 8.8 ounces
- **Material:** Durable Plastic
- **Recommended Age:** 3 years and up
- **Battery:** 1 Lithium Ion battery (replaceable)
- **Included:** LCD Writing Tablet, Stylus

8. WARRANTY AND SUPPORT

For any questions, concerns, or support regarding your KOKODI LCD Writing Tablet, please refer to the contact information provided with your purchase or visit the official KOKODI website. Specific warranty details may vary; please consult your product packaging or retailer for more information.