

Kircuit AC Adapter for X Rocker 5171101

Kircuit AC Adapter User Manual

For X Rocker 5171101 Drift Wireless 2.1 Sound Gaming Chair

1. INTRODUCTION

Thank you for choosing the Kircuit AC Adapter. This power supply is designed to provide reliable and efficient power to your X Rocker 5171101 Drift Wireless 2.1 Sound Gaming Chair. This manual will guide you through the proper setup, operation, and maintenance of your new adapter to ensure optimal performance and longevity.



Front view of the Kircuit AC Adapter, showing the power brick and the attached 6.5-foot DC output cable with its connector.

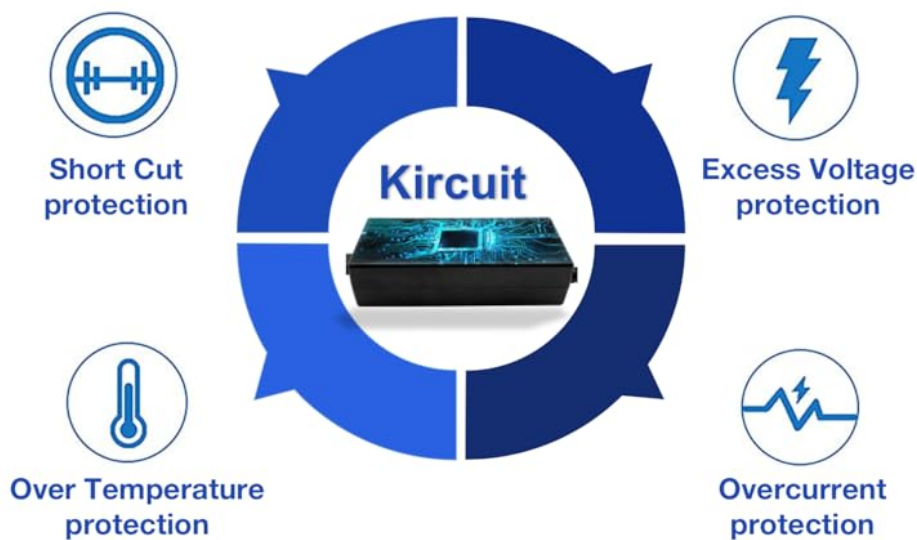
2. PRODUCT FEATURES

- **High Quality Construction:** This AC wall power charger is manufactured with high-quality components

for reliable performance.

- **Universal Input Voltage:** Supports input voltages from 100V-240V AC, making it suitable for various regions and travel.
- **Advanced Safety Protections:** Features built-in Dynamic IC, Charger IC, and a power fuse for rapid charging and comprehensive overcharge protection.
- **Tested Reliability:** Each unit is tested to ensure great working condition and consistent output.
- **Extended Cord Length:** Equipped with a 6.5-foot (approximately 2 meters) power cord for flexible placement.

Built Safety Protections



An illustrative diagram detailing the four key safety protections integrated into the Kircuit AC Adapter: short circuit protection, excess voltage protection, over temperature protection, and overcurrent protection.

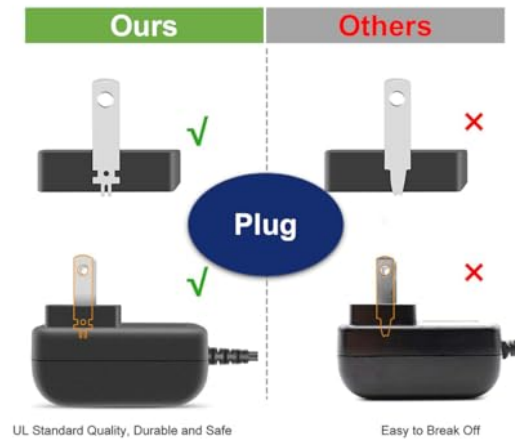
Durable design



- **Power cable made of high-quality materials with thick insulation layer to protect against wear and tear, as well as abrasion-resistant outer sheathing to prevent damage from external factors.**
- **The cable can withstand high temperatures without melting or degrading, which is especially important for cables carrying high current loads.**

Visual representation of the durable design features, including high-quality cable materials with thick insulation and abrasion resistance, designed to withstand high temperatures and external factors.

- The plugs on the power cable also well-made and designed to provide a secure and stable connection.
- The plugs can handle high electrical loads without overheating or causing a fire hazard.



A comparison graphic highlighting the secure and stable connection provided by Kircuit's well-made plugs, contrasting with less robust alternatives.

3. SETUP

3.1 Unpacking

1. Carefully remove the Kircuit AC Adapter from its packaging.
2. Inspect the adapter and cable for any signs of damage. If any damage is found, do not use the product and contact customer support.

3.2 Connecting the Adapter

1. Locate the power input port on your X Rocker 5171101 Drift Wireless 2.1 Sound Gaming Chair.
2. Insert the DC output connector of the Kircuit AC Adapter firmly into the gaming chair's power input port.
3. Plug the AC input prongs of the adapter into a standard wall outlet (100V-240V AC). Ensure the outlet is easily accessible.
4. Verify that the gaming chair powers on correctly.



The Kircuit AC Adapter connected to a power strip on a desk, demonstrating a typical usage scenario.

4. OPERATING INSTRUCTIONS

Once the Kircuit AC Adapter is properly connected to both the power outlet and your X Rocker 5171101 Gaming Chair, the chair should receive power. No further action is required for the adapter itself to operate. The adapter continuously supplies power as long as it is connected to a live power source and the gaming chair.

- Ensure the adapter is placed in a well-ventilated area to prevent overheating.
- Avoid placing heavy objects on the adapter or its cable.
- Disconnect the adapter from the power outlet when not in use for extended periods.

5. MAINTENANCE

The Kircuit AC Adapter requires minimal maintenance. Following these guidelines will help ensure its longevity:

- **Cleaning:** Disconnect the adapter from the power source before cleaning. Use a soft, dry cloth to wipe

the exterior. Do not use liquid cleaners or abrasive materials.

- **Storage:** When not in use, store the adapter in a cool, dry place, away from direct sunlight and extreme temperatures. Avoid tightly coiling the cable to prevent damage.
- **Inspection:** Periodically check the cable and connector for any signs of wear, cuts, or damage. If damage is observed, discontinue use and replace the adapter.

6. TROUBLESHOOTING

If you encounter issues with your Kircuit AC Adapter, please refer to the following common troubleshooting steps:

- **No Power to Gaming Chair:**
 - Ensure the adapter is securely plugged into both the wall outlet and the gaming chair.
 - Check if the wall outlet is functional by plugging in another device.
 - Inspect the adapter's cable and connector for any visible damage.
- **Adapter Overheating:**
 - Ensure the adapter is in a well-ventilated area and not covered by anything that could trap heat.
 - If overheating persists, discontinue use and contact support.
- **Intermittent Power:**
 - Check all connections for looseness.
 - Ensure the cable is not bent or crimped at sharp angles.

If these steps do not resolve the issue, please contact Kircuit customer support for further assistance.

7. SPECIFICATIONS

Input Voltage	100V-240V AC
Input Frequency	50/60Hz
Input Current	0.3A
Cord Length	6.5 feet (approx. 2 meters)
Item Weight	8 ounces
Manufacturer	Kircuit
ASIN	B082KF37DK



The Kircuit AC Adapter with its 6.5-foot power cord, highlighting the extended reach for flexible placement.

8. WARRANTY AND SUPPORT

The Kircuit AC Adapter is designed and manufactured to high-quality standards. While specific warranty details are not provided in this manual, Kircuit products are generally supported for their quality and performance.

For technical support, troubleshooting assistance, or inquiries regarding your Kircuit AC Adapter, please refer to the contact information provided by your retailer or visit the official Kircuit website.

Please retain your purchase receipt as proof of purchase for any warranty or support claims.

