

[manuals.plus](#) /

- › [Inovelli](#) /
- › [Inovelli Z-Wave Dimmer and RGBW Light Bulb Kit Instruction Manual](#)

Inovelli Z-Wave Dimmer & RGBW Light Bulb Kit

Inovelli Z-Wave Dimmer and RGBW Light Bulb Kit Instruction Manual

Model: Z-Wave Dimmer & RGBW Light Bulb Kit | Brand: Inovelli

1. INTRODUCTION

This instruction manual provides detailed guidance for the installation, operation, and maintenance of your Inovelli Z-Wave Dimmer Switches and RGBW Light Bulbs. This kit includes 4 Red Series Dimmer Switches and 2 RGBW Light Bulbs, both utilizing Z-Wave Plus technology for seamless integration with compatible smart home hubs such as SmartThings, Hubitat, and HomeSeer.

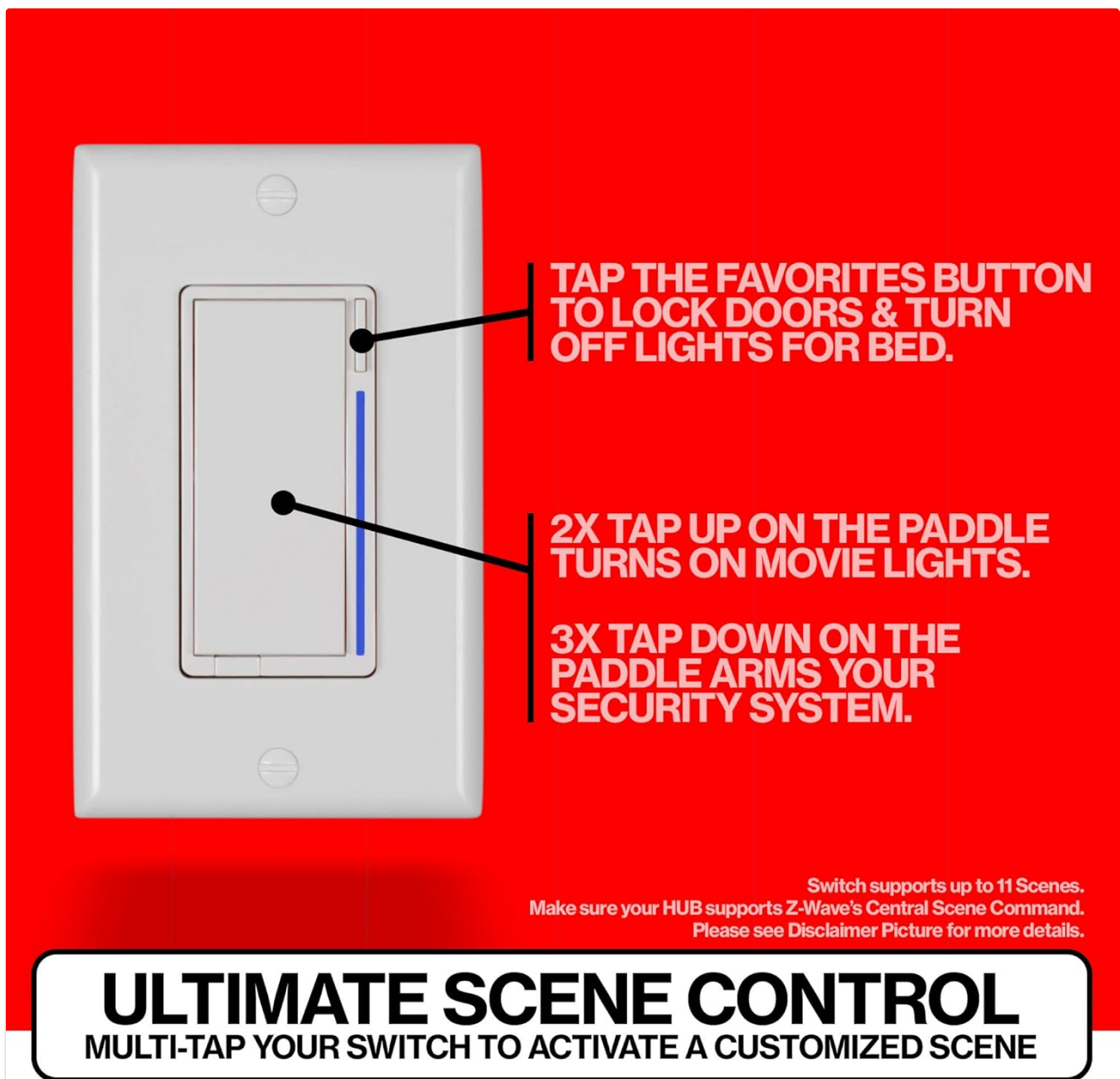


Image 1: Overview of the Inovelli Z-Wave Dimmer and RGBW Light Bulb Kit components.

2. SAFETY INFORMATION

Please read and understand all safety instructions before installation and use. Failure to follow these instructions may result in electric shock, fire, or other hazards.

- **WARNING: Risk of Electric Shock.** Always disconnect power at the circuit breaker or fuse box before installing or servicing.
- Install in accordance with all national and local electrical codes.
- If you are unsure about any part of these instructions, consult a qualified electrician.
- Do not use this device to control an appliance that could present a hazardous condition when operated remotely or unattended.
- For indoor use only.

3. PACKAGE CONTENTS

Verify that all components are present in your package:

- 4x Inovelli Red Series Z-Wave Dimmer Switches

- 2x Inovelli RGBW Z-Wave Light Bulbs
- Instruction Manual (this document)

4. SETUP AND INSTALLATION

4.1 Dimmer Switch Installation

Before beginning, ensure power is OFF at the circuit breaker.

1. **Wiring:** The Inovelli Red Series Dimmer Switch can operate with or without a neutral wire.
 - If installing without a neutral wire and your load is under 25W, a separate bypass may be required.
 - Energy monitoring functionality will not be available when wired without a neutral.
2. Connect the dimmer switch according to the wiring diagram provided in the switch packaging.
3. Secure the switch in the wall box and attach the wall plate.
4. Restore power at the circuit breaker.

4.2 Z-Wave Network Inclusion

To integrate your dimmer switch and RGBW bulbs into your Z-Wave network:

1. Put your Z-Wave hub into inclusion/pairing mode (refer to your hub's manual for specific instructions).
2. For the **Dimmer Switch**: Tap the config button on the switch (usually the small button below the paddle) or perform the specific inclusion sequence (e.g., 3x tap up on the paddle) as per the switch's manual.
3. For the **RGBW Light Bulb**: Screw the bulb into a standard light socket. Ensure the socket is powered on. The bulb should automatically enter pairing mode or can be manually triggered by cycling power.
4. Confirm successful inclusion on your Z-Wave hub.

4.3 Smart Bulb Mode (Dimmer Switch)

Enable Smart Bulb Mode on your dimmer switch to maintain constant power to your smart light bulbs, allowing the bulbs to be controlled directly by your Z-Wave hub for dimming and color changes.

RGBW FULL-COLOR BULBS



FULL RANGE OF COLOR
CHOOSE YOUR COLOR OR TUNE YOUR WHITE (WARM/COLD)

Image 2: Illustration of Smart Bulb Mode, where the switch maintains constant power and sends commands to the hub for bulb control.

5. OPERATING INSTRUCTIONS

5.1 Basic Dimmer Operation

- **On/Off:** Tap the top of the paddle to turn lights ON, tap the bottom to turn lights OFF.
- **Dimming:** Press and hold the top of the paddle to increase brightness, press and hold the bottom to decrease brightness.

5.2 Advanced Scene Control

The Inovelli Dimmer Switch supports up to 11 scenes, allowing multi-tap actions to activate customized smart home scenes. Ensure your Z-Wave hub supports Z-Wave's Central Scene Command for this functionality.

- **Tap Favorites Button:** Use the small button below the paddle to activate a pre-configured scene, such as locking doors and turning off lights for bedtime.
- **2x Tap Up on Paddle:** Can be configured to turn on specific lights, like movie lights.
- **3x Tap Down on Paddle:** Can be configured to arm your security system.

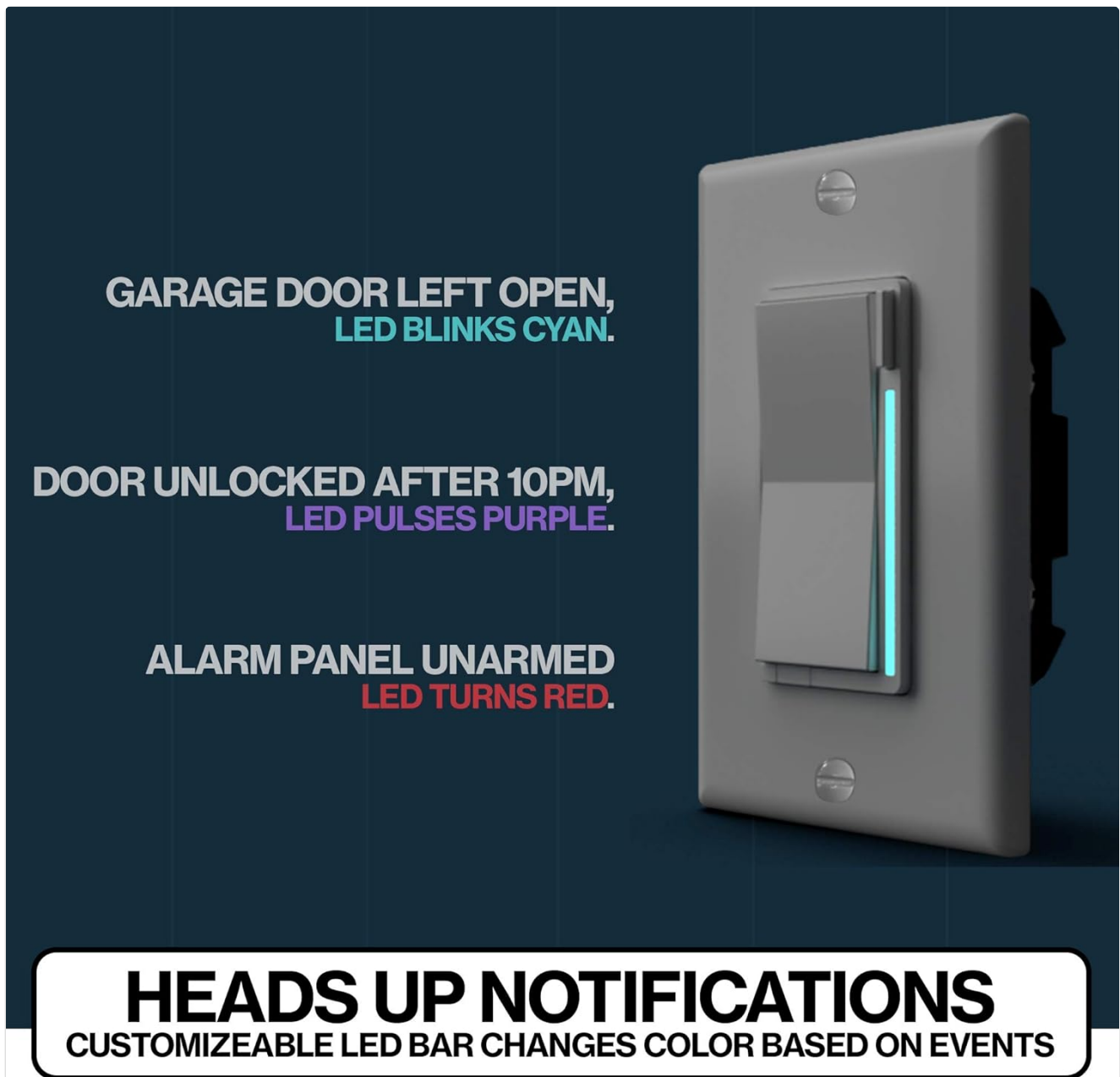


Image 3: Examples of multi-tap scene control functionality on the Inovelli Dimmer Switch.

5.3 Customizable LED Notifications

The integrated LED bar on the dimmer switch can change color and pattern to provide visual notifications based on events configured in your smart home hub.

- **Garage Door Left Open:** LED blinks cyan.
- **Door Unlocked After 10 PM:** LED pulses purple.
- **Alarm Panel Unarmed:** LED turns red.

**Enable smart bulb mode
to keep constant power to
your smart light.**

**Then the switch sends
commands to your HUB to
turn the bulb on, off, dim
or change its color.**



SMART BULB COMPATIBLE
CHANGE COLORS OR DIM LEVEL WITHOUT CUTTING POWER

Image 4: Examples of customizable LED bar notifications on the Inovelli Dimmer Switch.

5.4 RGBW Light Bulb Features

The included RGBW light bulbs offer a full spectrum of color and tunable white light, powered by Z-Wave technology.

- **Full Range of Color:** Choose from millions of colors to set the perfect ambiance.
- **Tunable White:** Adjust white light from warm to cool temperatures.
- **Z-Wave Powered:** Features AES-128 encryption, acts as a repeater, and utilizes mesh technology for a robust network.



Image 5: The Inovelli RGBW Light Bulb demonstrating its full-color capabilities.

6. MAINTENANCE

To maintain your Inovelli Z-Wave devices:

- Clean the dimmer switch and light bulbs with a soft, dry cloth.
- Do not use abrasive cleaners or solvents.
- Ensure devices are powered off before cleaning.

7. TROUBLESHOOTING AND IMPORTANT NOTES

Review the following important information and troubleshooting tips:

DISCLAIMERS - PLEASE READ. SERIOUSLY, READ BEFORE YOU BUY.

1. **PADDLES:** Gen 2 switches DO NOT INCLUDE Almond paddles. They can be purchased separately. Only white paddles are included.
2. **NEUTRAL:** This switch works either with or without a neutral wire. However, if you install the switch without a neutral wire, you may need to buy a separate bypass (Amazon # B0716BDNFB) if your Load is under 25W. In addition, energy monitoring is not available when wired without a neutral.
3. **GOOGLE HOME & ALEXA:** This switch will not work with Alexa and Google Home without a Z-Wave enabled HUB (ie: SmartThings, Hubitat, Wink, etc).
4. **NOTIFICATIONS, SCENES & ENERGY MONITORING:** We've tested the above with the following HUB's: SmartThings (device handler required), Hubitat (device driver required), HomeSeer, and OpenHAB. If your HUB is not on the list, notifications, scenes and energy monitoring will not work and we recommend purchasing our base model (Amazon # B07T2416D8).
5. **AUX SWITCH INSTALLATION:** If you prefer an Aux switch, we recommend GE (Amazon # B00RKJS8MQ) or HomeSeer (Amazon # B01DFSOTSM).
6. **SMARTTHINGS USERS:** For advanced functionality, you will need to use the SmartThings Classic App as the new SmartThings App does not allow for device handlers or advanced customization.

Image 6: Important disclaimers and considerations for Inovelli Z-Wave products.

- **Paddles:** Gen 2 switches do not include Almond paddles. Only white paddles are included. Other paddle colors can be purchased separately.
- **Neutral Wire:** This switch works with or without a neutral wire. If installing without a neutral wire, a separate bypass may be required if your load is under 25W. Energy monitoring will not function without a neutral wire.
- **Google Home & Alexa:** This switch requires a Z-Wave enabled HUB (e.g., SmartThings, Hubitat, Wink) to work with Google Home and Alexa. It will not work directly.
- **Notifications, Scenes & Energy Monitoring:** These advanced features require specific Z-Wave hubs and device drivers. Supported hubs include SmartThings (device handler required), Hubitat (device driver required), HomeSeer, and OpenHAB. If your hub does not support these features, consider purchasing a compatible hub or the base model (Amazon # B07T2416D8) for full functionality.
- **Aux Switch Installation:** For 3-way or multi-way setups, Inovelli recommends using GE Aux Switches (Amazon # B00RKJS8MQ) or HomeSeer Aux Switches (Amazon # B01DFSOTSM).
- **SmartThings Users:** For advanced functionality and customization, the SmartThings Classic App is recommended as the new SmartThings App may not support all device handlers or advanced settings.

8. TECHNICAL SPECIFICATIONS

Feature	Specification
Brand	Inovelli
Model	Z-Wave Dimmer & RGBW Light Bulb Kit
Connectivity Protocol	Z-Wave
Connector Type	Z-wave
Switch Type	Dimmer Switch
Controller Type	SmartThings (compatible with Hubitat, HomeSeer, OpenHAB)
Mounting Type	Wall Mount
International Protection Rating	IP54
Product Dimensions (L x W x H)	10.25 x 9.75 x 2.75 inches (Kit Packaging)
Unit Count	1 Count (Kit)
Manufacturer	Inovelli
UPC	850007431082
Date First Available	December 4, 2019

9. WARRANTY AND CUSTOMER SUPPORT

For warranty information and customer support, please refer to the official Inovelli website or contact their customer service directly. Specific warranty terms and conditions may vary.

Online Resources: For additional support, FAQs, and community forums, visit the Inovelli official website.