

Braun SES5-820

Braun Silk-épil 5 SES5-820 Epilator User Manual

Model: SES5-820

1. INTRODUCTION

This manual provides detailed instructions for the safe and effective use of your Braun Silk-épil 5 SES5-820 epilator. This 3-in-1 device is designed for gentle hair removal, offering epilation, shaving, and trimming functions for various body areas, including sensitive zones. It features Micro-Grip technology and is suitable for both wet and dry use.

Please read all instructions carefully before using the appliance and retain this manual for future reference.

2. IMPORTANT SAFETY INFORMATION

To reduce the risk of electric shock, injury, or damage to the appliance, please observe the following safety precautions:

- This appliance is suitable for use in a bath or shower. For safety reasons, it can only be operated cordless.
- Do not use the appliance on irritated skin, varicose veins, moles, or wounds without consulting a doctor.
- Keep the appliance dry when not in use and store it in a safe place.
- Ensure the charging unit remains dry. Do not immerse it in water or use it near water.
- This appliance is not intended for use by persons (including children) with reduced physical, sensory or mental capabilities, or lack of experience and knowledge, unless they have been given supervision or instruction concerning use of the appliance by a person responsible for their safety.
- Children should be supervised to ensure that they do not play with the appliance.
- Only use the power supply provided with the appliance.
- Do not open the appliance. It contains a non-replaceable battery.

3. PACKAGE CONTENTS

Your Braun Silk-épil 5 SES5-820 package includes the following items:

- 1x Braun Silk-épil 5 Epilator
- 1x Shaver Head
- 1x Trimmer Head
- 1x Bikini Styler
- 1x Skin Contact Cap
- 1x Pouch/Case
- 1x Cleaning Brush
- 1x Charger



Image 1: The Braun Silk-épil 5 SES5-820 epilator with its included shaver head, bikini styler, and comb. The packaging is also visible, highlighting the "Gentle Perfect for beginners" feature.

4. PRODUCT OVERVIEW AND CHARGING

4.1. Product Components

The Braun Silk-épil 5 SES5-820 is a versatile hair removal system. It consists of a main epilator unit and interchangeable heads for different functions.

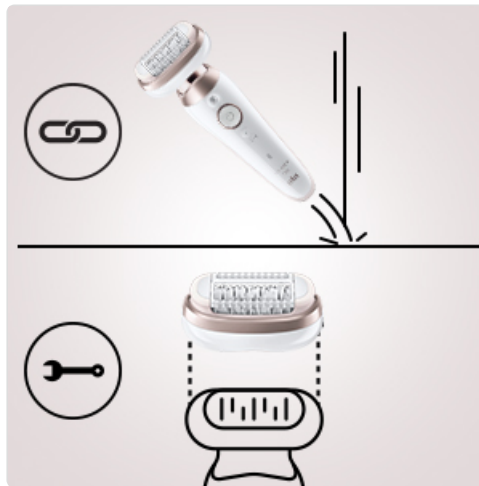


Image 2: Close-up of the Braun Silk-épil 5 epilator head, illustrating its design and the SensoSmart technology indicator.

4.2. Charging the Appliance

The epilator is cordless and designed for wet and dry use. Before first use, or when the battery is low, charge the appliance for approximately 1 hour. A full charge provides up to 30-40 minutes of cordless operation.

- Ensure the appliance is switched off.
- Connect the charger to the epilator and plug it into an electrical outlet.
- The charging indicator light will illuminate to show that the appliance is charging.
- Once fully charged, disconnect the charger. The appliance cannot be operated while plugged in.

5. SETUP AND ATTACHMENT INSTALLATION

Your Silk-épil 5 comes with various attachments for different hair removal needs. To change an attachment:

1. Ensure the appliance is switched off.
2. Press the release buttons on the sides of the current attachment and gently pull it off.
3. Align the desired attachment (epilator head, shaver head, or trimmer head) with the main unit and press it down until it clicks into place.

5.1. Skin Contact Cap

The skin contact cap is designed to ensure maximum skin contact for efficient hair removal. Attach it to the epilator head for optimal performance, especially for beginners.

6. OPERATING INSTRUCTIONS

6.1. General Epilation (Wet & Dry Use)

The Braun Silk-épil 5 can be used on dry skin or in the bath/shower for a more comfortable experience. Using it in warm water helps to relax the skin and reduce discomfort.

- **Preparation:** Ensure your skin is clean. For wet use, apply shower gel or foam.

- **Technique:** Hold the epilator at a 90-degree angle to your skin. Move the epilator slowly against the direction of hair growth. Do not press too hard.
- **Speed Settings:** The device typically has multiple speed settings. Start with a lower speed if you are new to epilation.
- **Stretch Skin:** For best results, stretch your skin taut with your free hand to ensure the hairs stand upright.



Image 3: A person using the Braun Silk-épil 5 epilator on their leg under running water in a shower, demonstrating its wet use capability.

6.2. Using the Shaver Head

The shaver head allows for a close shave, similar to a traditional razor, but with the convenience of an electric appliance. It is ideal for sensitive areas or when you prefer shaving over epilation.

- Attach the shaver head to the main unit.
- Hold the appliance flat against your skin and move it gently against the direction of hair growth.
- Can be used wet or dry.

6.3. Using the Trimmer Head

The trimmer head is designed to trim hair to a shorter length before epilation or for maintaining specific areas.

- Attach the trimmer head to the main unit.
- Move the trimmer against the direction of hair growth to shorten hairs.

6.4. Using the Bikini Styler

The included bikini styler is a precision tool for shaping and trimming the bikini line. It allows for precise lines, shapes, or contours.

- Use the bikini styler on dry skin.
- Hold the styler at an angle and gently guide it along the desired area to create precise lines or trim hair.



Image 4: An overhead view showcasing the Braun Silk-épil 5 main unit with both the epilator head and the shaver/trimmer head attached, emphasizing its 3-in-1 functionality. The bikini styler is also visible at the top.

7. MAINTENANCE AND CLEANING

Regular cleaning ensures optimal performance and hygiene of your appliance.

- **After Each Use:** Always switch off the appliance and disconnect it from the charger before cleaning.

- **Cleaning the Epilator Head:** Remove the epilator head. Use the provided cleaning brush to brush out any trapped hairs from the tweezers. For thorough cleaning, the epilator head can be rinsed under running water. Ensure it is completely dry before reattaching.
- **Cleaning Shaver/Trimmer Heads:** Remove the shaver/trimmer head. Use the cleaning brush to remove hair. The shaver foil and cutter block can be rinsed under running water. Allow to air dry completely.
- **Main Unit:** Wipe the main unit with a damp cloth. Do not immerse the main unit in water unless specifically designed for full immersion (this model is wet & dry, but the charging port should be dry).

8. TROUBLESHOOTING

If you encounter issues with your Braun Silk-épil 5, refer to the following common problems and solutions:

Problem	Possible Cause	Solution
Appliance does not turn on.	Battery is discharged.	Charge the appliance for at least 1 hour. Ensure the charger is properly connected.
Poor hair removal performance.	Incorrect usage angle or speed; hairs too short/long; dirty epilator head.	Move the epilator slowly against hair growth at a 90-degree angle. Ensure hair length is optimal (0.5mm is ideal). Clean the epilator head.
Discomfort during epilation.	First-time use; sensitive skin; dry epilation.	Use the appliance in the shower or bath with warm water and foam. Stretch skin taut. Use the skin contact cap. Discomfort usually decreases with regular use.
Appliance stops working during use.	Battery is low; motor overload.	Recharge the appliance. If the motor overloads (e.g., pressing too hard), release pressure and restart.

9. SPECIFICATIONS

- **Model Name:** Silk-épil 5-820
- **Model Number:** 4210201285892
- **Brand:** Braun
- **Power Source:** Rechargeable Battery (1 Lithium Ion, included)
- **Operating Time:** Up to 40 minutes cordless
- **Water Resistance Level:** Water Resistant (Wet & Dry use)
- **Voltage:** 1.5 Volts
- **Dimensions:** 18 cm (L) x 6.5 cm (W) x 19.7 cm (H)
- **Weight:** 387 g
- **Country of Origin:** Germany
- **Key Features:** Micro-Grip Technology (28 tweezers), SensoSmart technology, Shaver Head, Trimmer Head, Bikini Styler, Wet & Dry functionality.

10. WARRANTY AND SUPPORT

Braun products are manufactured to the highest quality standards. This product comes with a **5-year warranty**, covering defects in materials and workmanship from the date of purchase. Please retain your proof of purchase for warranty claims.

For further assistance, product registration, or to find authorized service centers, please visit the official Braun website or contact their customer support.



Image 5: A banner displaying various Braun epilators and highlighting a "5 years warranty" logo, emphasizing the brand's commitment to durability.