

## INFANS B0822F7XT5

# INFANS Foldable Baby Walker Instruction Manual

Model: B0822F7XT5

[Introduction](#)

[Safety Information](#)

[Product Features](#)

[Setup](#)

[Operation](#)

[Maintenance](#)

[Warranty &](#)

[Support](#)

[Troubleshooting](#)

[Specifications](#)

## 1. INTRODUCTION

Thank you for choosing the INFANS Foldable Baby Walker. This manual provides essential information for the safe assembly, operation, and maintenance of your baby walker. Please read it thoroughly before use and retain it for future reference. This 2-in-1 convertible walker is designed to support your child's development from seated play to walk-behind assistance, suitable for children weighing up to 25 lbs.

## 2. SAFETY INFORMATION

**WARNING:** Failure to follow these instructions could result in serious injury or death.

- Never leave child unattended.
- Always keep child in view while in walker.
- Prevent access to stairs, steps, and uneven surfaces.
- Protect child from hot liquids, electrical cords, and other hazards.
- This walker is intended for children who can sit up unassisted and weigh up to 25 lbs.
- Ensure all locking mechanisms are securely engaged before each use.
- The walker is equipped with a safety bumper under the seat to maintain a safe distance from walls and furniture, protecting the child's head.
- Six non-slip stair pads are included to help prevent the walker from falling down steps. Ensure these are properly installed if used near stairs.
- Compliant with US. CPSIA and ASTM Requirements. Made of non-toxic materials without any odor, FREE from BPA, PVC, Phthalates, Lead, Latex, and Formaldehyde. No sharp points or edges.

## 3. PRODUCT FEATURES

- **2-In-1 Convertible Design:** This baby walker easily converts from a seated walker to a walk-behind walker. It features an armrest behind the high-back padded seat and a removable safety bumper.



Image: The INFANS baby walker in its seated configuration, with a baby comfortably positioned inside.

- **Safety Bumper:** A safety bumper located under the seat ensures a safe distance from obstacles, protecting the child's head from collision. Additional non-slip stair pads are provided for enhanced safety near steps.



Image: A diagram highlighting the anti-collision bumper, ensuring a safe distance from obstacles.

- **3-Position Height Adjustment:** The walker's height can be adjusted to three different positions to accommodate children of varying leg lengths as they grow.



Image: Visual representation of the three adjustable height settings for the walker.

- **Adjustable Speed Rear Wheels:** The rear wheels are fixed with a nut, allowing you to tighten the screw to increase friction and control the walker's speed. This feature helps adapt to the child's strength and learning pace.



Image: Detail of the rear wheel with an arrow indicating the screw for speed adjustment.

- **Compact Fold for Storage:** The walker folds to a height of only 10 inches, making it easy to store under a bed or against a wall, ideal for small spaces or travel.

# Tray with Cup Holders

BPA-Free plastic tray for snacks or play.



Image: Step-by-step visual guide on how to fold the walker for compact storage.

- **Easy to Clean:** The seat cover is detachable for easy cleaning. The front tray can be wiped clean with a wet cloth.

# Product Size

Product weight: 11lbs

Weight capacity: 25lbs



Image: The walker's tray with cup holders, designed for easy cleaning.

## 4. SETUP INSTRUCTIONS

### 4.1 Unfolding the Walker

1. Place the folded walker on a flat, stable surface.
2. Locate the red button mechanism under the seat.
3. Rotate the red button half a turn until it aligns with the gap.
4. Push upward on the part of the red button, then pull the seat upwards until the walker locks into its open position. Ensure it clicks securely.



# Tray with Cup Holders

BPA-Free plastic tray for snacks or play.



Image: The walker transitioning from folded to an upright position.

## 4.2 Adjusting Height

1. To adjust the height, locate the adjustment buttons on the walker's legs.
2. Press the buttons and slide the walker frame up or down to one of the three desired height positions.
3. Ensure both sides are adjusted to the same height and lock securely into place.



Image: Detail of the height adjustment button and mechanism.

## 4.3 Installing Non-Slip Stair Pads

If using the walker near stairs, attach the six provided non-slip stair pads to the designated areas on the

bottom frame of the walker. These pads increase friction to help prevent accidental falls down steps.



Image: Underside view of the walker highlighting the placement of the six rubber pads.

## 5. OPERATING INSTRUCTIONS

### 5.1 Seated Walker Mode

- Ensure the walker is fully unfolded and locked, and the height is adjusted appropriately for your child.
- Place your child securely in the seat. The high back provides support and comfort.
- The front tray can be used for snacks or toys.

# Flat Folding Design

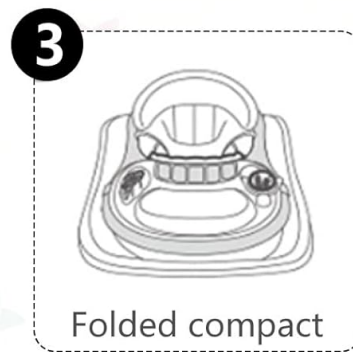
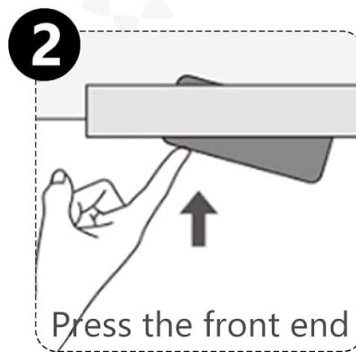
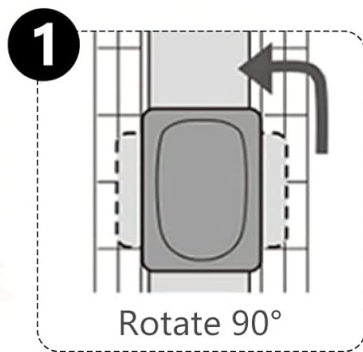


Image: A baby enjoying the seated walker mode.

## 5.2 Walk-Behind Mode

- When your child is ready to practice walking, the walker can be used as a push-behind aid.
- The handle at the back of the seat allows your child to grip and push the walker forward.



Image: A child using the walker in walk-behind mode, holding the rear handle.



## 5.3 Adjusting Wheel Speed

- To control the speed of the walker, locate the nuts on the rear wheels.
- Tighten the screws on these nuts to increase friction, which will slow down the walker. Loosen them to decrease friction and allow for faster movement.
- Adjust the speed according to your child's developmental stage and the type of flooring.



Image: Visual guide for adjusting wheel speed, showing low and standard speed modes.

## 6. MAINTENANCE

### 6.1 Cleaning the Seat Cover

- The seat cover is detachable for easy cleaning.
- Remove the seat cover from the walker frame.
- Machine wash the seat cover in cold water on a gentle cycle with mild detergent. Do not bleach.
- Air dry or tumble dry on low heat. Ensure it is completely dry before reattaching.

### 6.2 Cleaning the Tray and Frame

- Wipe the front tray and the walker frame with a damp cloth and mild soap.

- Rinse thoroughly with a clean, damp cloth to remove any soap residue.
- Dry completely before use.

## 7. TROUBLESHOOTING

- **Walker not unfolding/folding smoothly:** Ensure the red button mechanism is correctly aligned and fully engaged/disengaged. Check for any obstructions in the folding joints.
- **Wheels not moving freely:** Check for debris (hair, lint) caught in the wheels. Clean the wheels thoroughly. Ensure the speed adjustment screws are not overtightened.
- **Walker unstable:** Verify that all height adjustment locks are securely engaged on both sides. Ensure the walker is on a flat, even surface.
- **Seat cover difficult to remove/reattach:** Refer to the assembly instructions for proper removal and reattachment of the seat cover. Ensure all straps are unhooked/hooked correctly.

## 8. SPECIFICATIONS

Feature	Detail
Model Number	B0822F7XT5
Product Dimensions (Unfolded)	30"L x 24"W x 22"H
Product Dimensions (Folded)	Approximately 30"L x 24"W x 10"H
Item Weight	4.4 pounds
Maximum Weight Recommendation	25 Pounds
Material Type	Polypropylene (PP)
Height Adjustment	3 Positions (17.5", 18.5", 19.5")
Safety Features	Safety Bumper, 6 Non-slip Stair Pads
Certifications	Compliant with US. CPSIA and ASTM Requirements

## 9. WARRANTY AND SUPPORT

For warranty information or product support, please refer to the documentation included with your purchase or contact INFANS customer service directly. Keep your proof of purchase for any warranty claims. For further assistance, please visit the official INFANS website or contact their customer support.