

ZTHY LK03XL

ZTHY LK03XL Laptop Battery Replacement User Manual

For HP Envy X360 Series Laptops

1. INTRODUCTION

This manual provides essential instructions for the safe and effective use, installation, and maintenance of your ZTHY LK03XL replacement laptop battery. Please read this manual thoroughly before installation and use to ensure optimal performance and safety.

2. SAFETY INFORMATION

Lithium-ion batteries require careful handling. Adhere to the following safety guidelines:

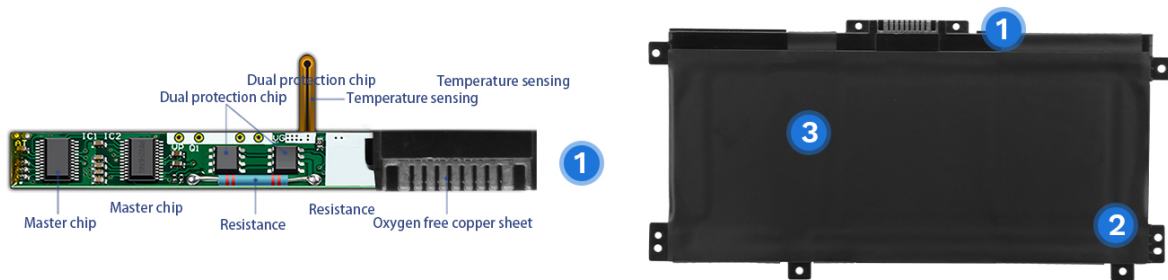
- Do not disassemble, crush, or puncture the battery.
- Do not dispose of the battery in fire or water.
- Avoid exposing the battery to extreme temperatures (below 0°C / 32°F or above 60°C / 140°F).
- Keep the battery away from children.
- If the battery shows signs of damage, swelling, or leakage, discontinue use immediately and dispose of it properly.
- Only use the battery with compatible devices as specified in this manual.

3. PRODUCT SPECIFICATIONS

Feature	Specification
Battery Type	Li-ion
Voltage	11.55V
Capacity	4835mAh / 55.8Wh / 3-Cell

Feature	Specification
Model Number	LK03XL
Dimensions	7.99 x 3.94 x 0.28 inches
Weight	9.1 ounces
Replace Part Numbers	916368-421, 916368-541, 916814-855, HSTNN-LB7U, HSTNN-LB8J, HSTNN-UB71, HSTNN-UB7I, L08855-856, L08934-1B1, L09049-1B1, L09280-855, L09281-855, L09911-141, L09911-421, LK03048XL, LK03055XL, LK03XL, LKO3XL, TPN-I129, TPN-W127, TPN-W128

High Quality Battery Cells | Battery Details



1 Durable Power Interface
Durable mental material ensure stable current transport and voltage.

2 Match Original Laptop
Same as original and connect the laptop tightly.

3 PC/ABS Material
Heat resistance, wear resistance, long life.

Image: ZTHY LK03XL Battery Core Parameters. This image displays the key specifications of the LK03XL battery, including its capacity (55.8Wh), voltage (11.55V), and Li-ion battery type.

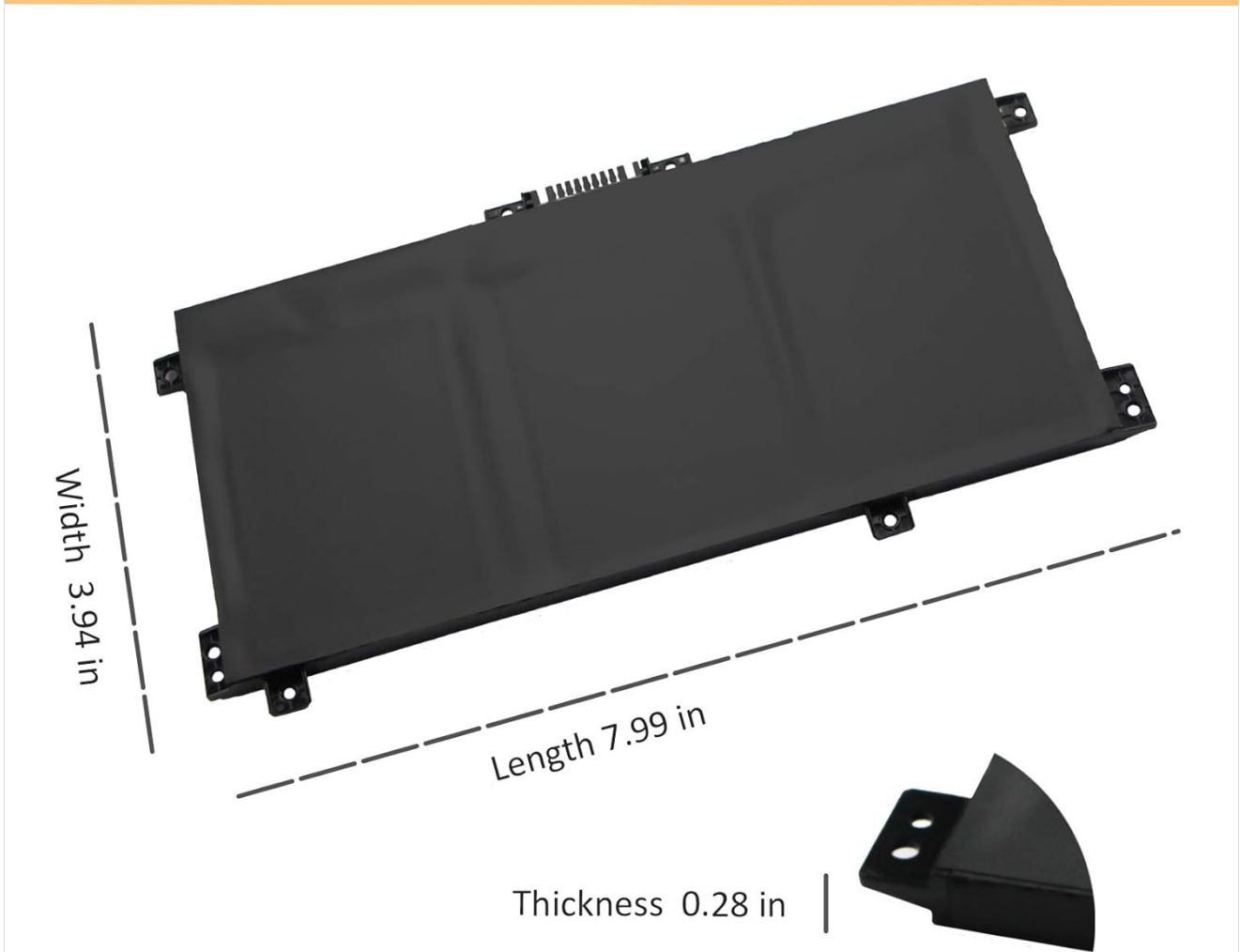


Image: ZTHY LK03XL Battery Dimensions. This image illustrates the physical dimensions of the battery, showing its length (7.99 in), width (3.94 in), and thickness (0.28 in).

4. COMPATIBILITY

The ZTHY LK03XL battery is compatible with a range of HP laptop models. Please verify your laptop's model number before installation.

Compatible HP Envy X360 Series:

- HP Envy X360 Convertible 15-BP, 15M-BP Series
- HP Envy X360 Convertible 15-BQ, 15M-BQ Series
- HP Envy X360 Convertible 15-CP, 15M-CP Series
- HP Envy X360 15-cn, 15m-cn, 15t-cn Series
- HP Envy X360 15m-cp, 15z-cp Series
- HP Envy X360 Convertible 17-ce, 17m-ce, 17t-ce Series

Compatible HP Envy Series:

- HP Envy 17-AE, 17M-AE Series
- HP Envy 17-BW, 17M-BW Series

Compatible HP Pavilion X360 Series:

- HP Pavilion X360 15-cr Series

Note: This list includes common models such as 15m-bp011dx, 15m-bp012dx, 15m-bp111dx, 15m-bq1xx, 15-bp143cl, 15-bp152wm, 15-bp194cl, 15-bp165cl, 15m-bq021dx, 15-bq213cl, 15m-cp0xxx, 15-cr0xxx, 15-bq194nz, 17-ae165nr, 17-ae120nr, 17m-ae0xx, 17m-ae011dx, 17m-ae111dx, 17-ae143ng, 17-bw0011nr, 17m-bw0013dx, 17m-ce0013dx, 17m-ce1013dx, 17-ce0008ca, 17-ce0015nr, 17t-ce000, 17t-ae100, 17t-bw000, 17-ce0xxx, 17m-ce0xxx, 17t-ce0xx, 17-ce0002ca, 17-ce0003ca, 17-ce0008ca, 17-ce0015nr, 17m-ce0013dx, 17m-ce1013dx, 17t-ce000, 17t-ce100.

How to Check Your Laptop Model:

1. Press the **Windows key + R** to open the Run dialog.
2. Type **msinfo32** and click **OK**.
3. In the System Information window, locate **System Model** to identify your laptop's model.



Image: Steps to check your laptop model. This image visually guides users through the process of finding their laptop's system model using the 'msinfo32' command in Windows.

5. INSTALLATION GUIDE

Replacing a laptop battery requires careful handling of internal components. If you are unsure, seek professional assistance.

Installation Steps:

1. **Power Off and Disconnect:** Completely turn off your laptop and disconnect the AC power adapter.
2. **Access Battery Compartment:** Carefully open the laptop's back cover. This may involve removing screws and using a pry tool. Refer to your laptop's specific service manual or online tutorials for detailed instructions on opening your model.
3. **Disconnect Old Battery:** Locate the old battery. Disconnect its cable from the motherboard to prevent any electrical shorts.
4. **Remove Old Battery:** Unscrew any retaining screws holding the old battery in place. Carefully lift and remove the old battery.
5. **Install New Battery:** Place the new ZTHY LK03XL battery into the battery compartment. Ensure it aligns correctly with the screw holes.
6. **Secure New Battery:** Screw in the retaining screws to secure the new battery.
7. **Connect New Battery:** Connect the new battery's cable securely to the motherboard interface. Ensure a firm connection.
8. **Reassemble Laptop:** Carefully reattach the laptop's back cover, ensuring all clips and screws are properly secured.

Your browser does not support the video tag.

Video: ZTHY LK03XL Battery Replacement for HP Envy X360 15-cn 17-ce. This video demonstrates the unboxing of the ZTHY LK03XL battery and tools, providing a visual overview of the product before installation.



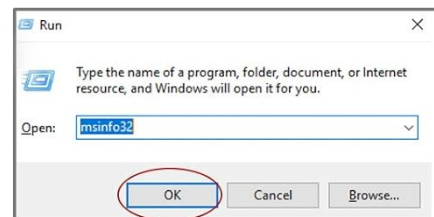
How to check your laptop model



1) press Windows + R



2) type "msinfo32" then click OK



3) find "System Model" in the pop-up window

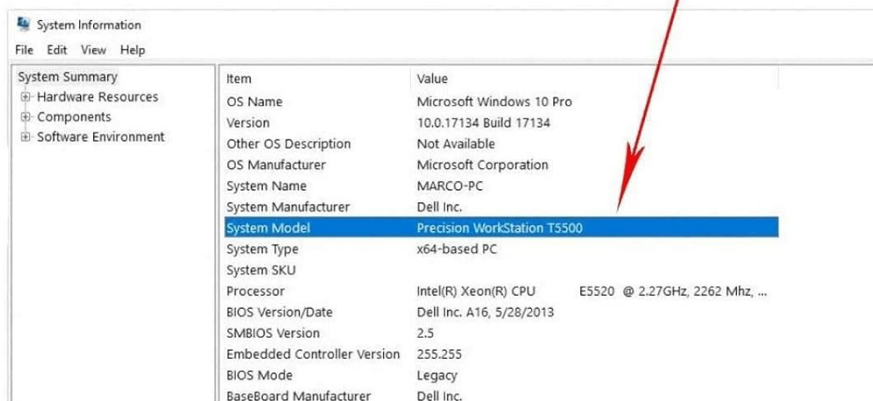
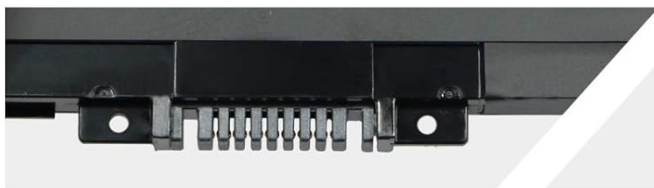
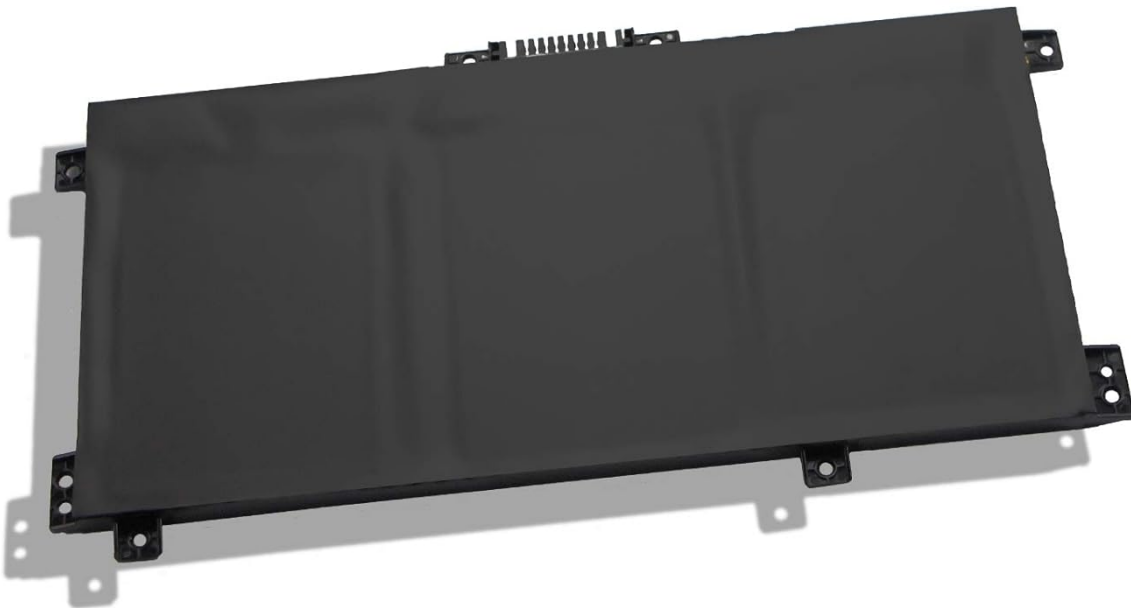


Image: ZTHY LK03XL Battery Packaging and Tools. This image shows the battery as it arrives in its packaging, along with the included installation tools such as screwdrivers and a pry tool.



Gold-plated connector points to ensure current transport excellently and serve stably.

Image: ZTHY LK03XL Battery Connector Details. This image highlights the gold-plated connector points on the battery, designed for stable current transport and reliable connection to the laptop's motherboard.

6. FIRST USE AND CONDITIONING

To optimize the performance and longevity of your new Lithium-ion battery, follow these initial conditioning steps:

1. **Initial Discharge:** After installation, use the laptop on battery power until the battery level reaches approximately 10% (do not let it discharge to 0%).
2. **Full Charge:** Connect the AC adapter and charge the battery to 95-100% without interruption.
3. **Repeat Cycle:** Repeat the discharge to 10% and full charge cycle 3-4 times. This process helps to calibrate the battery and 'wake up' the new cells.

7. BATTERY CARE AND MAINTENANCE

Proper care extends battery life and ensures consistent performance:

- **Avoid Prolonged Charging:** Do not leave the laptop connected to the AC adapter for extended periods after the battery is fully charged, as this can degrade battery health over time.
- **Storage:** If storing the battery for a long time (e.g., more than a month), charge it to at least 80% before storage. Store in a cool, dry place.
- **Temperature:** Operate your laptop within recommended temperature ranges. Extreme heat or cold can negatively

impact battery performance and lifespan.

- **Power Settings:** Adjust your laptop's power plan settings to 'Power Saver' and reduce processor state to 20% when on battery to maximize runtime.
- **Cleanliness:** Keep your laptop clean. Dust can accumulate in vents, leading to overheating which affects battery performance.
- **Disable Unused Features:** Turn off Wi-Fi, Bluetooth, and other unnecessary features when not in use to conserve battery power.

ZTHY <LK03XL

Quality Assurance



Entire
Protect



Premium
Microchip



Overheat
Protection



Over
Charge

Image: ZTHY LK03XL Battery Quality Assurance Features. This image highlights the built-in protection mechanisms of the battery, including entire protection, premium microchip, overheat protection, and overcharge protection, ensuring safe operation.

8. TROUBLESHOOTING

If you encounter issues with your new battery, try the following troubleshooting steps:

Battery Not Recognized:

- **Re-installation:** Turn off the laptop, disconnect AC power, remove the battery, and then reinstall it, ensuring the battery cable is firmly connected to the motherboard.
- **Check Motherboard Interface:** Verify that the conductive material on the laptop motherboard's battery contact position is not damaged. You can test with your original battery if available.

- **Driver Update:** Check if the battery driver is in normal condition. If not, download and update the corresponding driver software from your laptop manufacturer's website.

General Troubleshooting Steps:

1. Turn off the laptop completely.
2. Unplug the AC power adapter.
3. Remove the battery.
4. Reconnect the AC power adapter.
5. Turn on the laptop and allow the operating system to boot.
6. Once logged in, perform a normal shutdown.
7. Unplug the AC power adapter again.
8. Reinstall the battery.
9. Reconnect AC power and turn on the laptop.

9. WARRANTY AND SUPPORT

ZTHY is committed to providing quality products. For any warranty claims, technical support, or further assistance, please contact ZTHY customer service through the retailer where you purchased the product or visit the official ZTHY website for contact information.