

[Manuals.plus](#) /

> [EBUYFIRE](#) /

> EBUYFIRE 3000 Lumen Rechargeable Bike Light Set User Manual

EBUYFIRE part_B081SPS2WY

EBUYFIRE 3000 Lumen Rechargeable Bike Light Set User Manual

Model: part_B081SPS2WY

1. INTRODUCTION

Thank you for choosing the EBUYFIRE 3000 Lumen Rechargeable Bike Light Set. This manual provides essential information for the safe and effective use of your new bike light system. Please read these instructions thoroughly before installation and operation, and retain them for future reference.

2. PRODUCT OVERVIEW

The EBUYFIRE Bike Light Set is designed to enhance visibility and safety during cycling, especially in low-light conditions. It includes a powerful 3000 lumen front headlight and a non-rechargeable rear taillight.

Key Features:

- **High Brightness:** 3000 lumens from 3 LEDs for wide and long-range illumination.
- **Durable Construction:** High-quality aluminum alloy casing for shock resistance, heat dissipation, and corrosion resistance.
- **Waterproof Rating:** IPX5 rated, ensuring safe operation in rainy conditions.
- **Rechargeable Front Light:** Built-in 5200 mAh battery with USB input/output for charging and power bank functionality.
- **Multiple Modes:** Front light features High, Low, and Fast Flash modes. Rear light offers various flashing patterns.
- **Versatile Use:** Front light can also be used as a portable flashlight for camping, hiking, or emergencies.

3. PACKAGE CONTENTS

Please check the package for the following items:

- EBUYFIRE 3000 Lumen Front Bike Light

- Non-Rechargeable Rear Bike Light
- Handlebar Mounting Bracket for Front Light
- Silicone Strap Mount for Rear Light
- USB Charging Cable (for front light)

4. INSTALLATION

4.1 Front Light Installation

1. Attach the handlebar mounting bracket to your bicycle handlebar. Ensure it is securely tightened with the screw, facing forward.
2. Slide the EBUYFIRE front light onto the bracket until it clicks into place. The bracket allows for 360-degree rotation to adjust the beam direction.
3. Verify the light is firmly attached and does not obstruct your view or controls.



Image Description: This image illustrates the components of the EBUYFIRE front bike light, including the switch, 3 LEDs, USB port, and aluminum body. It also provides a visual guide for correctly installing the light onto the handlebar bracket, emphasizing the 360-degree rotation and secure attachment.

4.2 Rear Light Installation

1. Wrap the silicone strap of the rear light around your bicycle's seat post, helmet, or backpack.
2. Hook the strap securely to ensure the light is stable and visible from behind.



Image Description: This image displays the compact EBUYFIRE rear bike light and its flexible silicone strap. It visually demonstrates multiple ways to mount the taillight, including on a bicycle's seat post, a baby carriage, a backpack, and a helmet, highlighting its versatility.

5. OPERATION

5.1 Front Light Controls

- **Power On/Off:** Press and hold the power button on top of the light for approximately 2 seconds to turn the light on or off.
- **Mode Selection:** While the light is on, short press the power button to cycle through the lighting modes: High > Low > Fast Flash.
- **Flashlight Function:** The front light can be detached from its mount and used as a handheld flashlight.

MULTIPURPOSE FOR FLASHLIGHT



Image Description: This image shows the EBUYFIRE front bike light being held in a hand, illustrating its secondary function as a portable flashlight. The bright beam of light indicates its effectiveness for various non-cycling uses.

Multipurpose LED Light



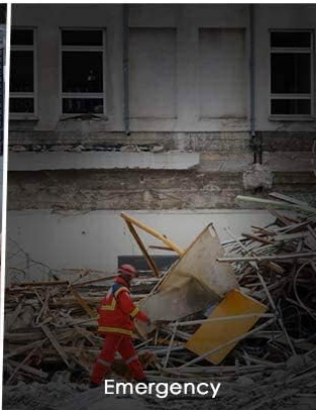
Outdoor Camping



Walking/Running at Night



Power Failure



Emergency

Image Description: This image demonstrates the EBUYFIRE front light's powerful illumination on a dark path when mounted on a bicycle. It also highlights the light's versatility through smaller images showing its utility for outdoor camping, night walking, power outages, and emergency situations.

5.2 Rear Light Controls

- **Power On/Off:** Press the button on the rear light to turn it on or off.
- **Mode Selection:** Short press the button to cycle through available flashing or steady modes.

5.3 Power Bank Function (Front Light Only)

The front light features a USB output port (5V 1A) that allows it to function as a power bank, providing emergency charging for your mobile devices.

- Connect your device's USB charging cable to the USB output port on the front light.
- The light will begin charging your device.



Image Description: This image shows a smartphone being charged by the EBUYFIRE front bike light via its USB output port, demonstrating the light's capability to act as a portable power bank.

6. CHARGING

6.1 Front Light Charging

- Locate the USB input port on the front light.
- Connect the provided USB charging cable to the light and to a USB power source (e.g., computer, wall adapter).
- The power button will typically illuminate red during charging and turn green when fully charged.
- Charging time varies depending on the power source, typically 2.5 to 5 hours.

6.2 Rear Light Battery Replacement

The included rear light is not rechargeable and uses button-cell batteries (e.g., CR2032, typically 2 units). When the light dims or stops working:

1. Carefully open the battery compartment on the rear light.
2. Remove the old batteries and dispose of them properly.
3. Insert new batteries, ensuring correct polarity.
4. Close the battery compartment securely.

7. MAINTENANCE

- **Cleaning:** Wipe the light's surface with a soft, damp cloth. Do not use abrasive cleaners or solvents.
- **Storage:** Store the light set in a cool, dry place when not in use. If storing for extended periods, ensure the front light is partially charged (around 50%) and recharge it every 3-6 months to maintain battery health.
- **Water Resistance:** While IPX5 waterproof, avoid submerging the light in water. Ensure the USB port cover is securely closed to prevent water ingress.

8. TROUBLESHOOTING

- **Front Light Not Turning On:**
 - Ensure the battery is charged. Connect to a USB power source.
 - Press and hold the power button for 2 seconds to activate.
- **Front Light Dim or Short Battery Life:**
 - Fully charge the battery. Battery performance may decrease over time with repeated use.
 - Ensure the light is not operating in an extremely cold environment, which can affect battery performance.

- **Rear Light Not Working:**
 - Check and replace the button-cell batteries.
 - Ensure batteries are inserted with correct polarity.
- **Light Falls Off Mount:**
 - Ensure the mounting bracket is securely tightened to the handlebar.
 - Verify the light is fully slid into the bracket until it locks.

9. SPECIFICATIONS

Brand	EBUYFIRE
Model Number	part_B081SPS2WY
Front Light Output	3000 Lumens (3 LEDs)
Front Light Battery	1 Lithium-ion (5200 mAh), included
Rear Light Battery	Button-cell (non-rechargeable)
Material	Aluminum Alloy
Water Resistance Rating	IPX5
Dimensions (L x W x H)	10 x 4.5 x 2.5 cm
Weight	300 grams
Power Source	Battery Powered
Mounting Type	Handlebar Mount (Front), Strap Mount (Rear)
Light Color	White (Front), Red (Rear)

10. WARRANTY AND SUPPORT

EBUYFIRE offers a one-year return service for this product. If you encounter any issues or are not satisfied with your purchase within one year from the date of purchase, please contact EBUYFIRE customer support for assistance.

For support, please refer to the contact information provided with your purchase or visit the official EBUYFIRE website.