

[Manuals.plus](#) /

> [EBUYFIRE](#) /

> EBUYFIRE 3 LEDs Bike Lights User Manual

EBUYFIRE KX3

EBUYFIRE 3 LEDs Bike Lights User Manual

Model: KX3

Brand: EBUYFIRE

1. PRODUCT OVERVIEW

The EBUYFIRE 3 LEDs Bike Lights set provides comprehensive illumination for night riding, featuring a powerful front headlight and a versatile rear taillight. Designed for durability and convenience, this set is USB rechargeable and includes a power bank function for charging other devices. Its robust construction and waterproof rating ensure reliable performance in various conditions.



Figure 1: EBUYFIRE 3 LEDs Bike Lights Set

2. PACKAGE CONTENTS

Upon opening your EBUYFIRE Bike Lights package, please verify that all the following components are included:

- Bike Headlight (3 LEDs)
- Bike Taillight
- Handlebar Mount Holders
- USB Charging Cables (typically one for each light)

3. PRODUCT FEATURES

- **Powerful Illumination:** The bike headlight features 3 LEDs, providing both high beam and floodlights for bright road illumination during night rides. The taillight ensures visibility from the rear.
- **Multiple Light Modes:** The front headlight offers 5 modes (High, Medium, Low, Strobe, SOS), and the rear taillight has 4 modes (High, Low, Fast Flash, Slow Flash) for adaptable lighting.
- **USB Rechargeable & Power Bank Function:** Both lights are USB rechargeable. The headlight includes a built-in rechargeable battery that can also function as a power bank to charge your phone or bike computer.
- **Durable & Waterproof Design:** Constructed with a stainless steel clip and an aluminum alloy shell, ensuring

sturdiness and durability. The IPX5 waterproof rating allows the lights to withstand adverse weather conditions.

- **Easy Installation & Portability:** Designed for tool-free installation on various bikes. The headlight detaches quickly to serve as a compact emergency flashlight, perfect for cycling, running, hiking, camping, or other night activities.



Figure 2: Key Features of the EBUYFIRE Headlight

3LEDs HEADLIGHT

3 or 5 switch mode:



High

Medium

Low

Strobe

SOS



5 LEDs TAILLIGHT

4 Mode:



High



Low



Slow flash



Slow flash

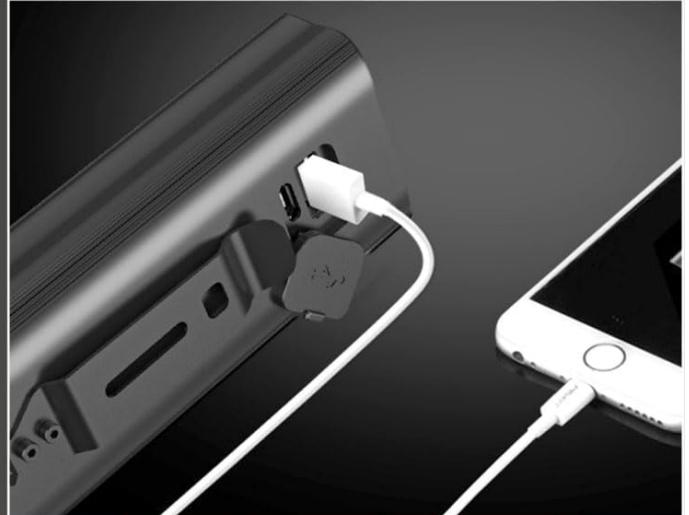


Figure 3: Headlight and Taillight Mode Options

3LED USB Bike light



3LED Super Bright



USB Power Bank



Stainless Steel Clip



Power Indicator

Figure 4: IPX5 Waterproof Rating

Easy Installation



1 Take out the fixing screws



2 Snap into handlebar



3 Make sure the bike light is anchored



4 Align with bracket slot, install



5 Install it on the clip



6 Remove the light, press the button to unlock



7 As the arrow shows, the lights and bicycle seat card into



8 As indicated by the arrows, align the rubber bands on either side of the deck



9 As indicated by the arrow, rubber ring to live on the other side of the tube can be fixed

Figure 5: Optimized Light Beam for Safety

4. SETUP AND INSTALLATION

Follow these steps to properly install your EBUYFIRE bike lights:

1. Headlight Installation:

- Take out the fixing screws from the handlebar mount.
- Snap the mount onto your handlebar. Ensure it is securely anchored.
- Align the headlight with the bracket slot on the mount and slide it in.
- To remove the light, press the button to unlock and slide it off.

2. Taillight Installation:

- As indicated by the arrows on the taillight, align the rubber bands on either side of the deck.
- Fix the rubber ring to live on the other side of the tube (e.g., seat post).

Multi-purpose LED light

Super Bright Bike Lights

Application in Different situation

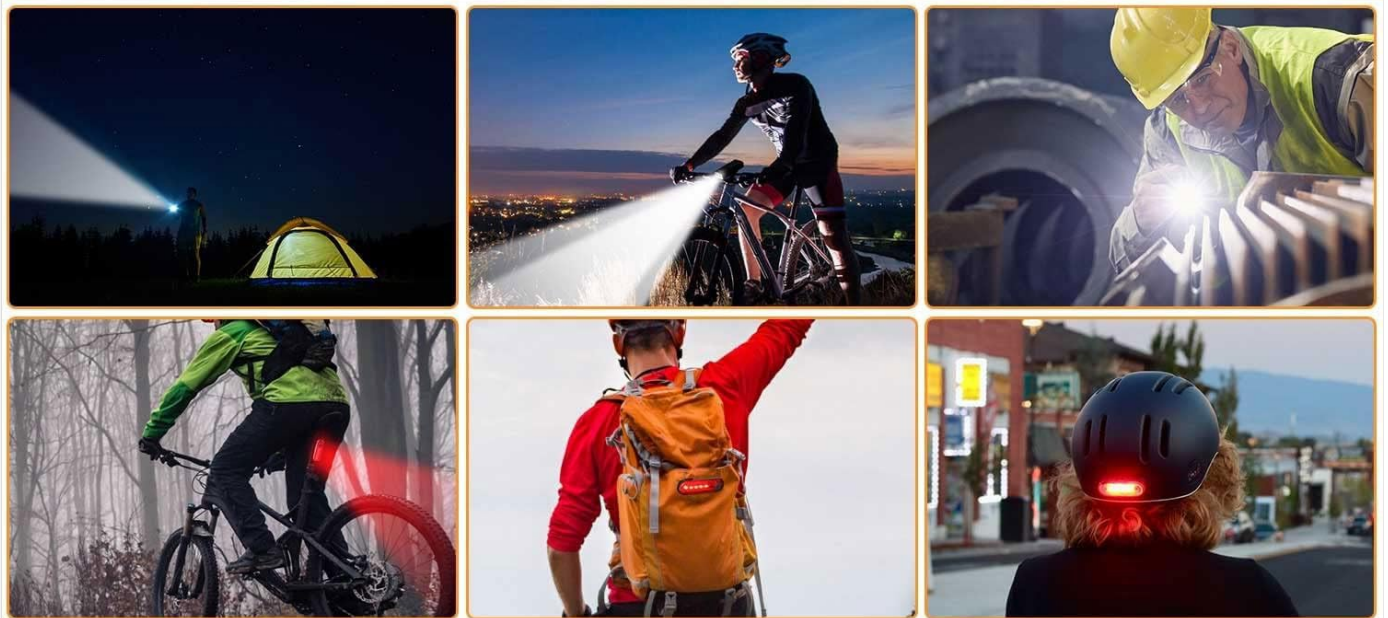


Figure 6: Easy Installation Guide

5. OPERATING INSTRUCTIONS

Familiarize yourself with the operation of your EBUYFIRE bike lights:

5.1 Headlight Operation

- **Power On/Off:** Press and hold the power button to turn the headlight on or off.
- **Change Modes:** Short press the power button to cycle through the 5 available modes: High, Medium, Low, Strobe, and SOS.
- **Power Bank Function:** The headlight can charge external devices. Connect your device to the USB output port on the light.

5.2 Taillight Operation

- **Power On/Off:** Press and hold the power button on the taillight to turn it on or off.
- **Change Modes:** Short press the power button to cycle through the 4 available modes: High, Low, Fast Flash, and

Slow Flash.

Your browser does not support the video tag.

Video 1: Demonstration of EBUYFIRE 3000 Lumen USB Rechargeable Bike Light Set features and operation.

6. MAINTENANCE

Proper maintenance will extend the lifespan of your bike lights:

- **Charging:** Charge the lights regularly using the provided USB cables. Ensure the charging port is dry before connecting. A full charge can take up to 3 hours.
- **Cleaning:** Wipe the lights with a soft, damp cloth. Avoid using abrasive cleaners or solvents that could damage the finish or waterproof seals.
- **Storage:** Store the lights in a cool, dry place when not in use. If storing for an extended period, charge them periodically to maintain battery health.
- **Water Resistance:** While rated IPX5 waterproof, avoid submerging the lights in water. After exposure to rain, ensure the charging port cover is securely closed.



Figure 7: USB Charging Capability

7. TROUBLESHOOTING

If you encounter issues with your EBUYFIRE bike lights, refer to the following common problems and solutions:

Problem	Possible Cause	Solution
Light does not turn on.	Battery is depleted; Power button not pressed correctly.	Charge the light fully. Ensure you press and hold the power button for a few seconds.
Light dims or turns off unexpectedly.	Low battery; Overheating.	Recharge the light. If overheating occurs, turn off the light and allow it to cool down before resuming use.
Power bank function not working.	Light battery is too low; Cable issue; Device incompatibility.	Ensure the bike light is sufficiently charged. Try a different USB cable or device.

Problem	Possible Cause	Solution
Light falls off mount.	Improper installation; Mount not tightened.	Review the installation steps in Section 4. Ensure the mount is securely fastened and the light is clipped in correctly.

8. SPECIFICATIONS

Detailed technical specifications for the EBUYFIRE Bike Lights:

Feature	Detail
Model Name	KX3 Bike Light Set
Brand	EBUYFIRE
Color	3 LEDs SET
Brightness	3000 Lumen
Headlight Modes	5 (High, Medium, Low, Strobe, SOS)
Taillight Modes	4 (High, Low, Fast Flash, Slow Flash)
Power Source	Battery Powered (USB Rechargeable)
Material	Aluminum Alloy Shell, Stainless Steel Clip
Water Resistance Rating	IPX5
Item Weight	0.3 Kilograms
Product Dimensions	2.36"L x 2.36"W x 7.67"H
Mounting Type	Handlebar Mount

9. WARRANTY AND SUPPORT

EBUYFIRE provides a one-year warranty for your bike lights, ensuring customer satisfaction. If you encounter any issues or have questions regarding your product, please do not hesitate to contact our customer support. We are committed to prioritizing your satisfaction and will assist you promptly.

For support, please refer to the contact information provided with your purchase or visit the official EBUYFIRE store on Amazon: [EBUYFIRE Store](#).