



[Manuals.plus](#) /

> [CALPALMY](#) /

> CALPALMY 12x12 inch 1/8 inch Thick Clear Acrylic Sheet Instruction Manual

## CALPALMY 12x12 inch, 1/8 inch Thick Clear (2-Pack)

# CALPALMY 12x12 inch 1/8 inch Thick Clear Acrylic Sheet Instruction Manual

Model: 12x12 inch, 1/8 inch Thick Clear (2-Pack)

## INTRODUCTION

---

This manual provides essential information for the proper use, handling, and maintenance of your CALPALMY 12x12 inch, 1/8 inch thick clear acrylic sheets. Please read these instructions carefully before use to ensure optimal results and product longevity.

## PRODUCT FEATURES

---

- **Premium Quality Acrylic:** Manufactured from high-quality cell acrylic, offering an ultra-clear finish without cloudiness or scratches.
- **Protective Film:** Each sheet is covered with a blue protective film on both sides to prevent damage during transit and handling. This film must be removed before use.
- **Versatile Application:** Ideal for a wide range of projects including crafting, business signage, display cases, home décor, and shelving.
- **Durability:** Stronger than traditional glass panels, providing a safe, shatterproof alternative with glass-like clarity.
- **Weather and UV Resistant:** Suitable for both indoor and outdoor applications, capable of withstanding various environmental conditions.
- **Easy to Work With:** Can be cut, drilled, and engraved using appropriate tools without melting, scorch marks, or breakage.

## SETUP AND PREPARATION

---

1. **Unpacking:** Carefully remove the acrylic sheets from their packaging. Inspect for any visible damage.
2. **Protective Film Removal:** Before using the acrylic sheet, gently peel off the blue protective film from both sides. This film ensures the sheet remains scratch-free until ready for use.

# PROTECTIVE MASKING ON BOTH SIDES



PEEL OFF PROTECTIVE FILM FROM BOTH SIDE OF SHEET

*Protective masking being peeled off from both sides of the sheet.*

3. **Surface Preparation:** Ensure your working surface is clean, flat, and free of debris to prevent scratches on the acrylic sheet.

## OPERATING INSTRUCTIONS (WORKING WITH ACRYLIC)

---

CALPALMY acrylic sheets are designed for ease of customization. Follow these guidelines for cutting, drilling, and engraving:

- **Cutting:**

Acrylic sheets can be cut using various tools for clean, polished edges. Recommended tools include:

- Mitre saw
- Jigsaw
- Router
- Table saw
- Rotary tools

- Hand saw

Avoid using acrylic knives, as they may not provide the best results for this thickness. Ensure blades are sharp and suitable for plastics to prevent splintering or melting.



*Various tools suitable for cutting and polishing acrylic sheets. An acrylic knife is not recommended for this material.*

- **Drilling:**

Easily bore holes with an electric drill. Use drill bits designed for plastics or a standard drill bit with a slow speed and light pressure to prevent cracking or chipping. Support the acrylic sheet firmly to avoid movement.

- **Engraving:**

These sheets are suitable for engraving with tools like a Cricut or a dedicated engraver. No melting, scorch marks, or burns should occur during the engraving process when using appropriate settings.

- **Heat Shaping:**

Acrylic can be gently shaped using a heat gun. Apply heat evenly and gradually to avoid overheating or bubbling. Always wear appropriate safety gear.

Your browser does not support the video tag.

*Official video demonstrating the versatility and workability of CALPALMY Clear Acrylic Sheets, including cutting and handling.*

## MAINTENANCE AND CARE

- **Cleaning:** Use a soft, non-abrasive cloth and mild soap and water to clean acrylic surfaces. Avoid harsh chemicals, ammonia-based cleaners (like window cleaner), or abrasive pads, as these can scratch or damage the surface.
- **Scratch Prevention:** While durable, acrylic can scratch. Handle with care and avoid dragging objects across its surface. For long-term storage, keep sheets protected with their film or a soft cloth.
- **Outdoor Use:** The sheets are UV and weather resistant, making them suitable for outdoor projects. Regular cleaning will help maintain clarity and appearance.



Durable



Weatherproof



Uv Resistant



Anti-cracking

*Plexiglass panels are durable, weatherproof, UV resistant, and anti-cracking, suitable for various environments.*

## TROUBLESHOOTING

- **Scratches Appear After Use:** Acrylic can be susceptible to scratching if not handled carefully. Use soft cloths for cleaning and avoid abrasive materials. Minor scratches can sometimes be buffed out with specialized acrylic polish.
- **Edges are Rough After Cutting:** This can occur if the wrong blade or incorrect cutting technique is used. Ensure your saw blade is fine-toothed and designed for plastics. Slow down the cutting speed and apply steady pressure.

Edges can be smoothed with fine-grit sandpaper and then polished.

- **Cracking During Drilling:** Use a drill bit specifically designed for plastics or a standard bit with a modified tip (blunted angle). Drill at a slow speed with minimal pressure, and ensure the sheet is well-supported.
- **Sheet Appears Cloudy:** Ensure the blue protective film has been completely removed from both sides of the acrylic sheet. If cloudiness persists, clean the sheet with mild soap and water.

## SPECIFICATIONS

---

Feature	Detail
Brand	CALPALMY
Model Number	12x12 inch, 1/8 inch Thick Clear (2-Pack)
Material	Acrylic
Color	Clear
Shape	Flat
Item Dimensions	12 x 12 inches
Item Thickness	1/8 inch (0.13 inches)
Item Weight	0.63 Kilograms (per pack of 2)
Number of Items	2 Count
UPC	684753221419
Grade Rating	High Quality

# Size

1/8" Thick

12"

12"

*Dimensions of the CALPALMY 12x12 inch, 1/8 inch thick clear acrylic sheet.*

## WARRANTY AND SUPPORT

---

For any questions, concerns, or support regarding your CALPALMY acrylic sheets, please refer to the seller's return policy or contact CALPALMY customer service through the platform of purchase. Information regarding returns and refunds is typically available for 30 days from the purchase date.

*Note: Specific warranty details may vary. Please consult your purchase documentation for precise terms and conditions.*

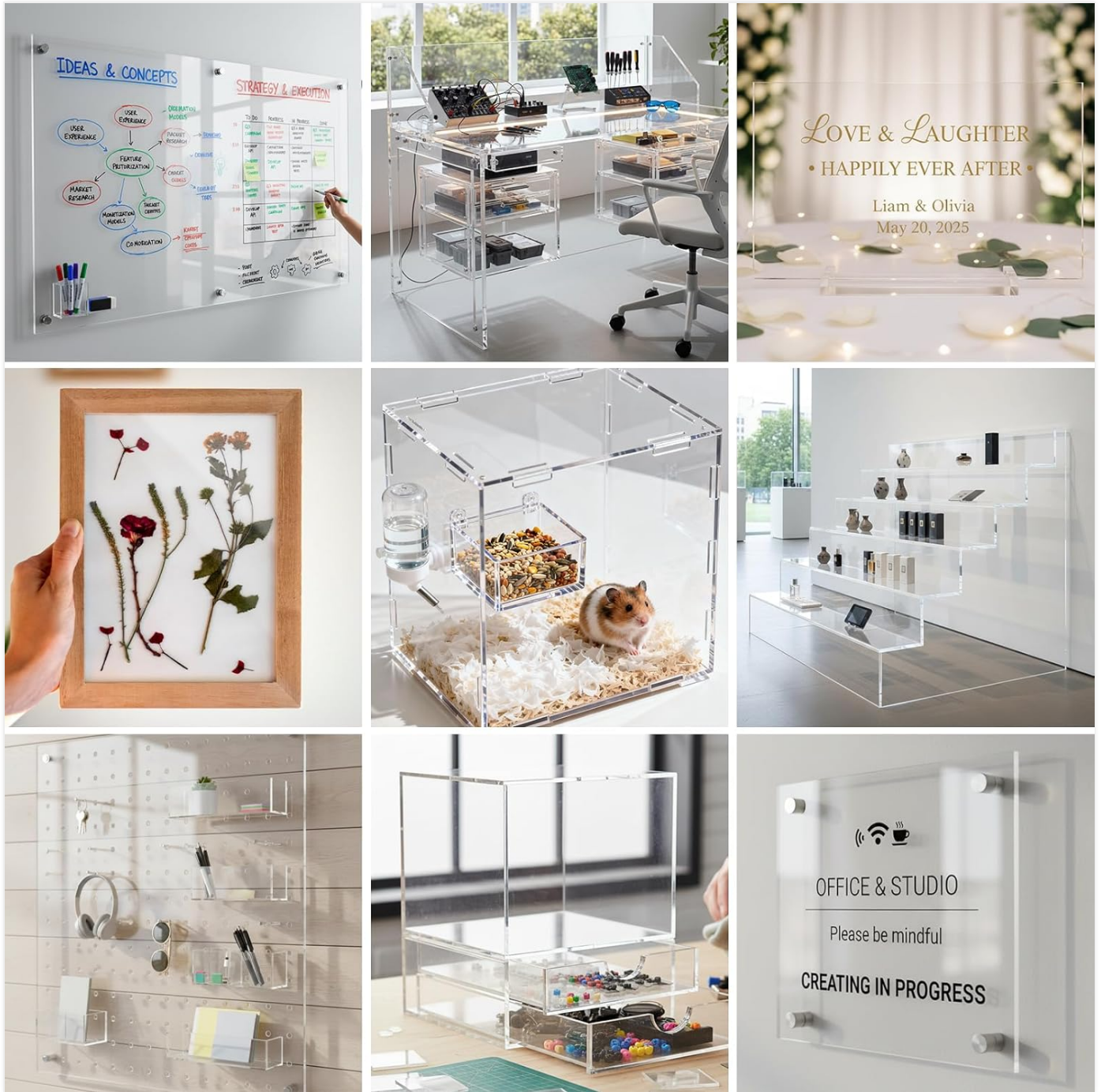
## ADDITIONAL APPLICATIONS

---

Beyond standard crafting, CALPALMY acrylic sheets are suitable for:

- Creating custom display cases for collectibles.
- Fabricating protective barriers or sneeze guards.
- Designing unique home decor items and shelving.

- Use in educational projects or architectural models.



Examples of diverse applications for CALPALMY clear acrylic sheets.