



Manuals.plus /

› Kircuit /

› Kircuit AC Adapter Instruction Manual for iLuv IMM178 iMM178BLK Vibe Plus Alarm Clock Dock

Kircuit IMM178, iMM178BLK

Kircuit AC Adapter Instruction Manual

FOR ILUV IMM178 AND IMM178BLK VIBE PLUS ALARM CLOCK DOCK

1. Introduction

This Kircuit AC Adapter is designed as a reliable replacement power supply for the iLuv IMM178 and iMM178BLK Vibe Plus Alarm Clock Dock. It provides stable and efficient power to ensure the proper functioning of your device. This manual outlines the setup, operation, maintenance, and troubleshooting for your new AC adapter.

Key features include a wide input voltage range (100V-240V AC) for global compatibility and built-in dynamic ICs for rapid charging and overcharge protection, ensuring safety and longevity.



Image: Two Kircuit AC adapters, showcasing the product label and design.

2. Setup Instructions

1. **Unpack the Adapter:** Carefully remove the Kircuit AC adapter from its packaging. Inspect it for any visible damage.
2. **Identify the Device Port:** Locate the power input port on your iLuv IMM178 or IMM178BLK Vibe Plus Alarm Clock Dock.
3. **Connect to Device:** Insert the adapter's output connector firmly into the power input port of your iLuv device.
4. **Connect to Power Outlet:** Plug the AC adapter's prongs into a standard wall power outlet (100V-240V AC). Ensure the outlet is functioning correctly.
5. **Verify Power:** Once connected, your iLuv device should power on or indicate that it is receiving power.



Image: Kircuit AC adapter plugged into a power strip, demonstrating connection.

3. Operating Instructions

The Kircuit AC adapter operates automatically once connected to a power source and your iLuv device. It provides continuous power, allowing your alarm clock dock to function as intended. The adapter is designed for reliable, long-term use.

- **Input Voltage:** The adapter supports a universal input voltage of 100V-240V AC, making it suitable for use in various regions.
- **Safety Features:** Built-in protections guard against short circuits, excess voltage, over temperature, and overcurrent, ensuring safe operation for both the adapter and your connected device.

Why choose Kircuit ?



Kircuit adapters have a wide range of product offerings that are compatible with various device types, power requirements, and connector standards. Kircuit adapters have a strong quality control process in place to ensure our products meet the highest standards of safety and performance.

Image: Diagram detailing the built-in safety protections of the Kircuit AC adapter.

4. Maintenance

Proper care and maintenance will extend the life of your Kircuit AC adapter:

- **Storage:** Store the adapter in a cool, dry place when not in use.
- **Cleaning:** Use a soft, dry cloth to clean the adapter. Do not use liquid cleaners or solvents.
- **Handling:** Avoid dropping the adapter or subjecting it to strong impacts. Do not bend the cable excessively, especially near the connectors.
- **Environmental Conditions:** Do not expose the adapter to extreme temperatures, humidity, or direct sunlight.
- **Repairs:** Do not attempt to open or repair the adapter yourself. This can void any potential warranty and poses a safety risk.

- The plugs on the power cable also well-made and designed to provide a secure and stable connection.
- The plugs can handle high electrical loads without overheating or causing a fire hazard.

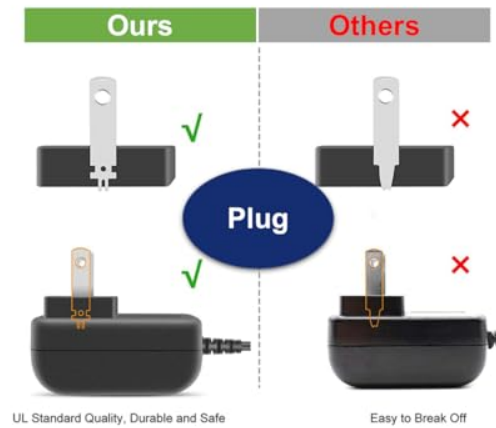


Image: Illustration of the durable cable design, emphasizing quality materials.

5. Troubleshooting

If you encounter issues with your Kircuit AC adapter, refer to the following common troubleshooting steps:

- **Device Not Powering On:**
 - Ensure the adapter is securely plugged into both the iLuv device and the wall outlet.
 - Test the wall outlet with another device to confirm it is receiving power.
 - Verify that the iLuv device itself is functioning correctly with its original power supply, if available.
- **Adapter Feels Warm:**
 - It is normal for power adapters to feel slightly warm during operation.
 - If the adapter becomes excessively hot to the touch, disconnect it immediately and contact support.
- **Intermittent Power:**
 - Check all connections for looseness.
 - Ensure the cable is not damaged or frayed.

6. Specifications

Feature	Detail
Brand	Kircuit
Input Voltage	100V-240V AC
Main Power Connector Type	2 Pin (US Standard)
Special Features	Portable, Travel
Item Weight	8 Ounces
Safety Protections	Short Circuit, Excess Voltage, Over Temperature, Overcurrent

7. Warranty and Support

For warranty information and customer support, please refer to the documentation provided with your purchase or contact the manufacturer, Kircuit, directly. Details regarding return policies and specific warranty periods are typically provided by the seller at the time of purchase.