

A4tech G3-200NS

A4tech G3-200NS Silent Wireless Mouse User Manual

Model: G3-200NS | Brand: A4tech

INTRODUCTION

Thank you for choosing the A4tech G3-200NS Silent Wireless Mouse. This manual provides detailed instructions for setting up, operating, and maintaining your new wireless mouse. Designed for comfort and efficiency, this optical mouse offers silent clicks and reliable wireless connectivity for both PC and laptop use.

PACKAGE CONTENTS

Please check the package contents to ensure all items are present:

- A4tech G3-200NS Silent Wireless Mouse
- USB Receiver
- User Manual (this document)
- (Note: 1 AA battery required, not included)

SETUP

1. Installing the Battery

1. Locate the battery compartment on the underside of the mouse.
2. Open the battery compartment cover.
3. Insert one AA battery, ensuring correct polarity (+/-).
4. Close the battery compartment cover securely.



Figure 1: Underside of the mouse with battery compartment.

2. Connecting the USB Receiver

1. Locate the USB receiver, typically stored within the mouse's battery compartment or packaged separately.
2. Plug the USB receiver into an available USB port on your computer or laptop.
3. The operating system will automatically detect and install the necessary drivers. This may take a few moments.
4. Once installed, the mouse is ready for use.



Figure 2: A4tech G3-200NS mouse and its USB receiver.

OPERATING THE MOUSE

Basic Functions

- **Left Click:** Primary action, selection, opening items.
- **Right Click:** Opens contextual menus.
- **Scroll Wheel:** Scrolls documents and web pages vertically. The scroll wheel also functions as a middle click button.

Silent Click Technology

The A4tech G3-200NS features silent click technology, significantly reducing click noise for a quieter working environment.

Wireless Range

The mouse operates within a wireless range of approximately 10 to 15 meters from the USB receiver, depending on environmental conditions and obstacles.

MAINTENANCE

Battery Replacement

When the mouse performance degrades or stops responding, it is likely time to replace the AA battery. Follow the battery installation steps outlined in the "Setup" section.

Cleaning

To clean the mouse, use a soft, dry cloth. For stubborn dirt, a slightly damp cloth can be used, ensuring no moisture enters the internal components. Avoid using harsh chemicals or abrasive cleaners.

TROUBLESHOOTING

Problem	Solution
Mouse not responding	<ul style="list-style-type: none">• Ensure the battery is correctly installed and has sufficient charge. Replace if necessary.• Verify the USB receiver is securely plugged into a working USB port. Try a different USB port.• Ensure the mouse is within the effective wireless range of the receiver.• Restart your computer.
Erratic cursor movement	<ul style="list-style-type: none">• Clean the optical sensor on the underside of the mouse.• Use the mouse on a clean, non-reflective surface.• Check for strong interference from other wireless devices.
Short wireless range	<ul style="list-style-type: none">• Move the mouse closer to the USB receiver.• Ensure there are no large metal objects or other electronic devices obstructing the signal path.

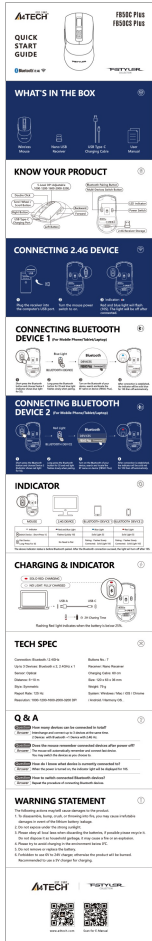
SPECIFICATIONS

- **Brand:** A4tech
- **Model:** G3-200NS
- **Mouse Type:** Optical Mouse
- **Connectivity:** Wireless (2.4 GHz)
- **Color:** Black
- **Compatible with:** PC & Laptop
- **Operating System:** Linux, Windows XP (and newer versions)
- **Power Source:** 1 x AA Battery (not included)
- **Average Battery Life:** Approximately 6 months (may vary with usage)
- **Wireless Range:** 10-15 meters
- **Special Features:** Silent Click Technology

WARRANTY AND SUPPORT

For warranty information or technical support, please refer to the warranty card included with your purchase or visit the official A4tech website. Keep your proof of purchase for warranty claims.

Related Documents - G3-200NS



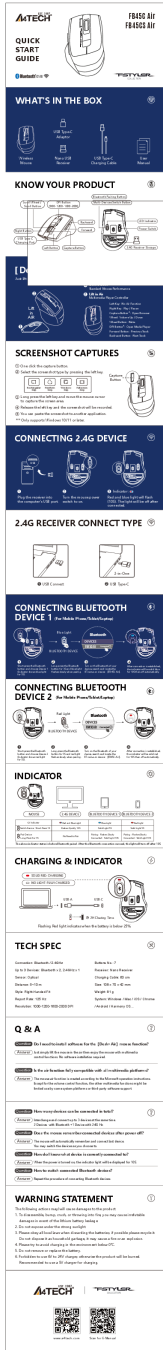
[A4TECH FB50C Plus/FB50CS Plus Wireless Mouse Quick Start Guide](#)

Comprehensive quick start guide for the A4TECH FB50C Plus and FB50CS Plus wireless mouse. Learn how to connect via 2.4G wireless or Bluetooth, understand indicator lights, charge the device, and find technical specifications and answers to common questions.



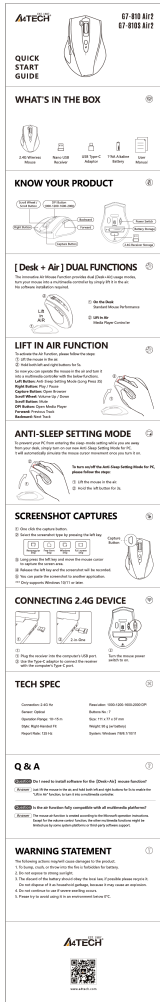
[A4TECH FM50 Plus / FM50S Plus Quick Start Guide | Product Overview and Specifications](#)

Get started with your A4TECH FM50 Plus and FM50S Plus mouse. This guide covers what's in the box, product features, master editing software, and detailed technical specifications.



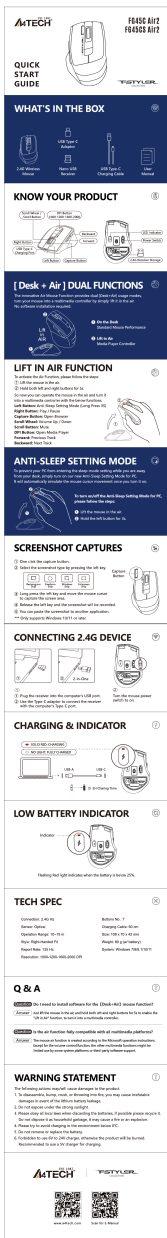
[A4TECH FSTYLER FB45C Air Wireless Mouse Quick Start Guide](#)

A comprehensive guide to setting up and using the A4TECH FSTYLER FB45C Air wireless mouse, covering 2.4GHz and Bluetooth connectivity, multimedia controls, and troubleshooting.



[A4TECH G7-810\(S\) Air2 Wireless Mouse Quick Start Guide](#)

Comprehensive quick start guide for the A4TECH G7-810(S) Air2 wireless mouse, covering setup, features like Desk+Air dual functions, anti-sleep mode, screenshot captures, and technical specifications.



[A4TECH FG45C\(S\) Air2 Wireless Mouse Quick Start Guide](#)

A comprehensive quick start guide for the A4TECH FG45C(S) Air2 wireless mouse, detailing its features, setup, functions, and specifications for optimal use.



[A4TECH FG10C/S Air2 & FG16C/S Air2 Wireless Mouse Quick Start Guide](#)

Quick start guide for A4TECH FG10C/S Air2 and FG16C/S Air2 wireless mice, covering setup, dual functions (Desk+Air modes), charging, technical specifications, and safety warnings.