

Dreams SMI-66228_66244

Dreams Smiski Glow in the Dark Mini Figure Set: Bed + Living Series Instruction Manual

INTRODUCTION

Welcome to the world of Smiski, the curious little creatures that love hiding in corners and small places. This manual provides essential information for your Smiski Glow in the Dark Mini Figure Set, featuring both the Bed and Living Series. Each set contains two assorted blind box figures, ensuring a unique surprise with every purchase. Smiski figures are designed to glow mysteriously in the dark, adding a subtle charm to your personal space.



Image: The packaging for the Smiski Bed Series (blue box) and Living Series (orange box).

PRODUCT CONTENTS

Each Smiski Glow in the Dark Mini Figure Set includes:

- Two (2) Smiski blind boxes, each containing one mystery Smiski figure.
- Information leaflet (may be in Japanese).

The Bed Series includes figures such as Smiski crying, storytelling, relaxing, tired with pillow, sleeping, and cuddling. The Living Series includes figures such as Smiski daydreaming, playing an instrument, hiding, taking a nap, thinking, and lifting.



Image: Examples of Smiski figures from the Living Series, illustrating various poses and activities.

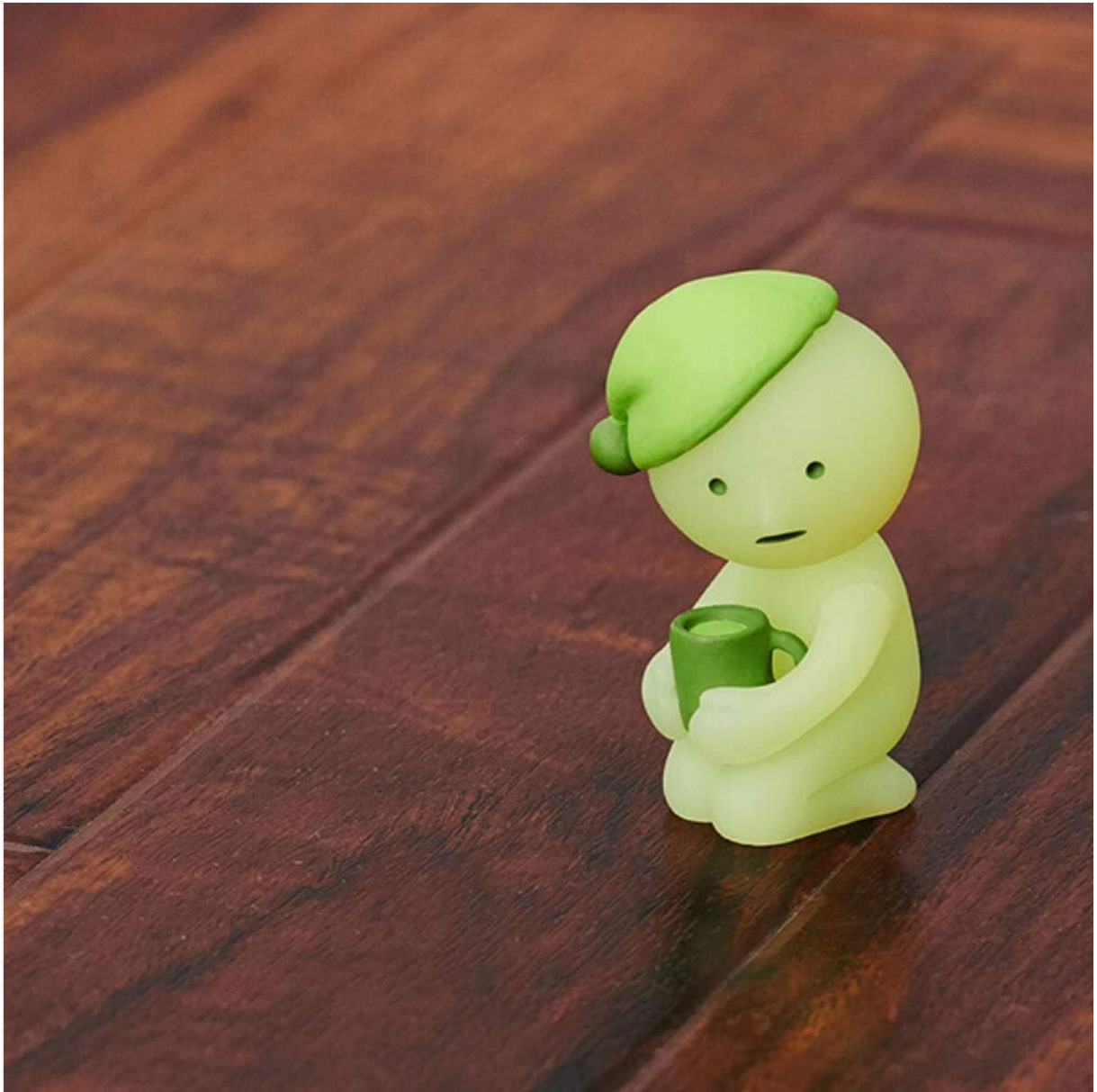


Image: A Smiski figure from the Bed Series, characterized by a green sleeping cap and a small cup.



Image: Another Smiski figure from the Bed Series, depicted reading a book.

SETUP

Smiski figures require no assembly. To set up your Smiski figures:

1. Carefully open the blind box to reveal your mystery Smiski figure.
2. Place your Smiski figure in a desired location. Smiski figures are designed to fit into small spaces and corners, such as on shelves, desks, or nightstands.
3. For optimal glow, ensure the figure is exposed to light before placing it in a dark environment.



Image: Smiski figures displayed on a desk, demonstrating their suitability for various placements.



Image: Smiski figures positioned on furniture, showcasing their versatility in home decor.

OPERATING INSTRUCTIONS

Smiski figures are made from a phosphorescent material that absorbs light and then emits it as a glow in the dark. No batteries or external power sources are required.

- **Charging the Glow:** Expose your Smiski figure to a light source (natural sunlight or artificial room light) for a period of time. The longer the exposure, the brighter and longer the glow will be.
- **Activating the Glow:** Once charged, place the Smiski figure in a dark or dimly lit environment to observe its glow.



Image: Smiski figures glowing in a dark bedroom, illustrating their primary function.

MAINTENANCE

To ensure the longevity and appearance of your Smiski figures:

- **Cleaning:** Gently wipe the figures with a soft, dry cloth to remove dust. For stubborn dirt, a slightly damp cloth can be used, followed by immediate drying. Avoid harsh chemicals or abrasive cleaners.
- **Storage:** Store figures away from direct, prolonged sunlight when not in use to prevent potential material degradation over time.
- **Handling:** Handle figures with care to avoid damage. While durable, they are small collectible items.

TROUBLESHOOTING

If your Smiski figure is not glowing as expected:

- **Insufficient Light Exposure:** Ensure the figure has been exposed to a sufficient amount of light. Try placing it under a bright lamp for 10-15 minutes before moving it to a dark room.
- **Ambient Light:** Verify that the environment is completely dark. Even small amounts of ambient light can diminish the perceived glow.

- **Material Properties:** The glow intensity and duration can vary slightly between individual figures and with the amount of light absorbed.

SPECIFICATIONS

Product Dimensions	4.4 x 2.2 x 3.2 inches
Item Weight	2.9 ounces
Model Number	SMI-66228_66244
Manufacturer Recommended Age	12 years and up
Manufacturer	Dreams

WARRANTY INFORMATION

Specific warranty details for the Smiski Glow in the Dark Mini Figure Set are not provided in this manual. For information regarding product warranty, please refer to the manufacturer's official website or contact the retailer from whom the product was purchased.

SUPPORT

For further assistance or inquiries about your Smiski figures, please visit the official Dreams website or contact their customer support directly. Contact information is typically available on the manufacturer's packaging or website.