

CREATE NETBOT S15

CREATE NETBOT S15 Robot Vacuum Cleaner User Manual

Model: NETBOT S15 (10600)

1. INTRODUCTION

The CREATE NETBOT S15 is a professional 4-in-1 robot vacuum cleaner designed to sweep, vacuum, mop, and scrub your floors. This manual provides essential information for the safe and efficient operation, maintenance, and troubleshooting of your device. Please read it thoroughly before first use and retain it for future reference.

2. SAFETY INSTRUCTIONS

- Ensure the power adapter and charging base are compatible with your local power supply.
- Do not use the robot in wet environments or to clean liquids.
- Keep the robot and its accessories out of reach of children and pets.
- Do not operate the robot if it is damaged or malfunctioning. Contact customer support.
- Use only original accessories and replacement parts provided by CREATE.
- Before cleaning or maintenance, ensure the robot is powered off and disconnected from the charging base.
- Remove any loose cables, small objects, or fragile items from the cleaning area to prevent entanglement or damage.

3. PACKAGE CONTENTS

Upon unpacking, verify that all items are present:

- CREATE NETBOT S15 Robot Vacuum Cleaner
- Charging Base
- Power Adapter
- Side Brushes (set)
- Main Brush (pre-installed)
- Dustbin
- Water Tank with Mop Cloth
- Cleaning Tool

4. PRODUCT OVERVIEW

Familiarize yourself with the main components of your NETBOT S15 robot vacuum cleaner.

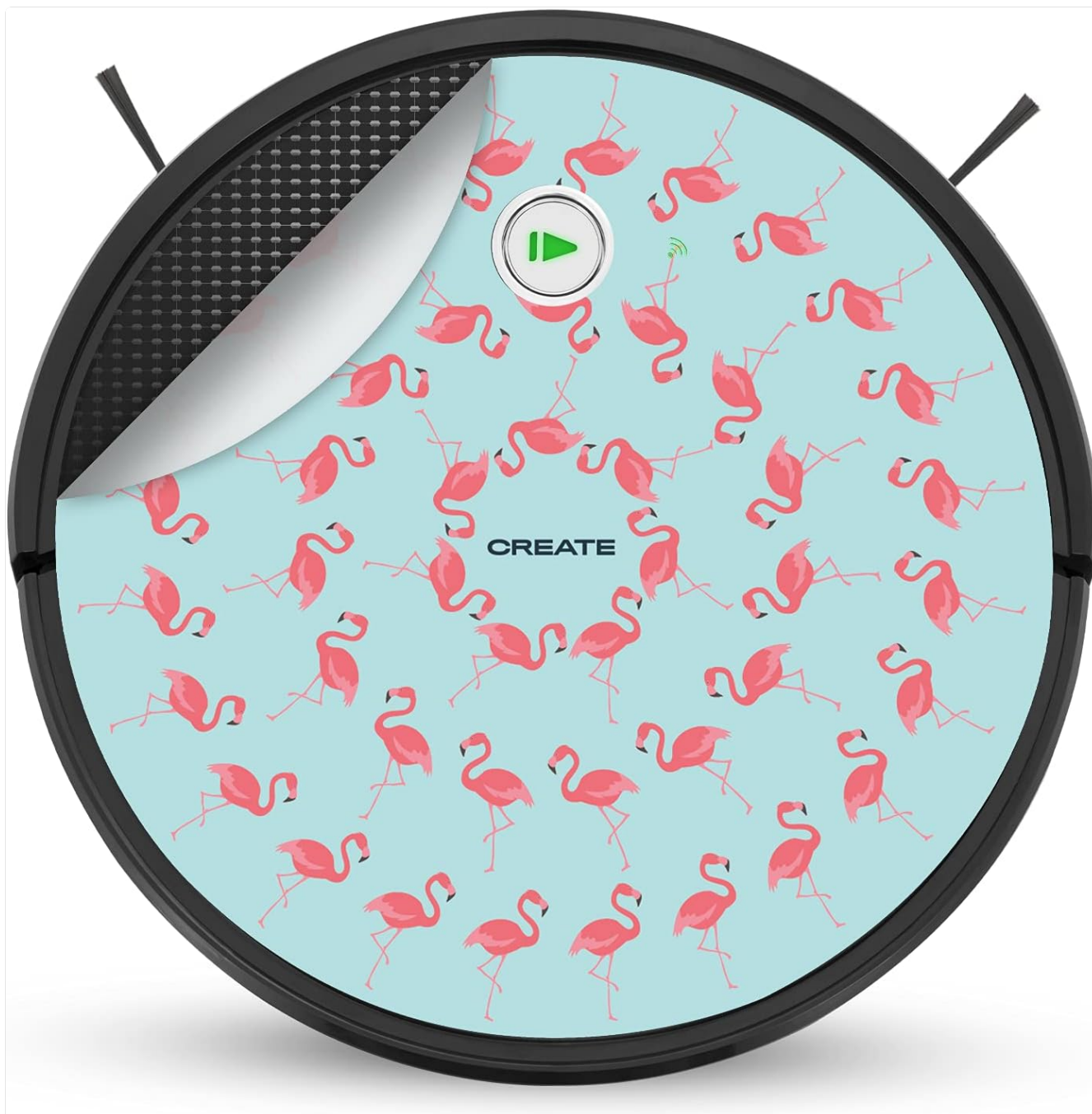


Figure 4.1: Top view of the CREATE NETBOT S15 robot vacuum cleaner. This image shows the circular robot with a light blue decorative sticker featuring pink flamingos. The central power button is visible, along with the 'CREATE' brand name on the sticker. The textured black surface around the sticker is also visible.

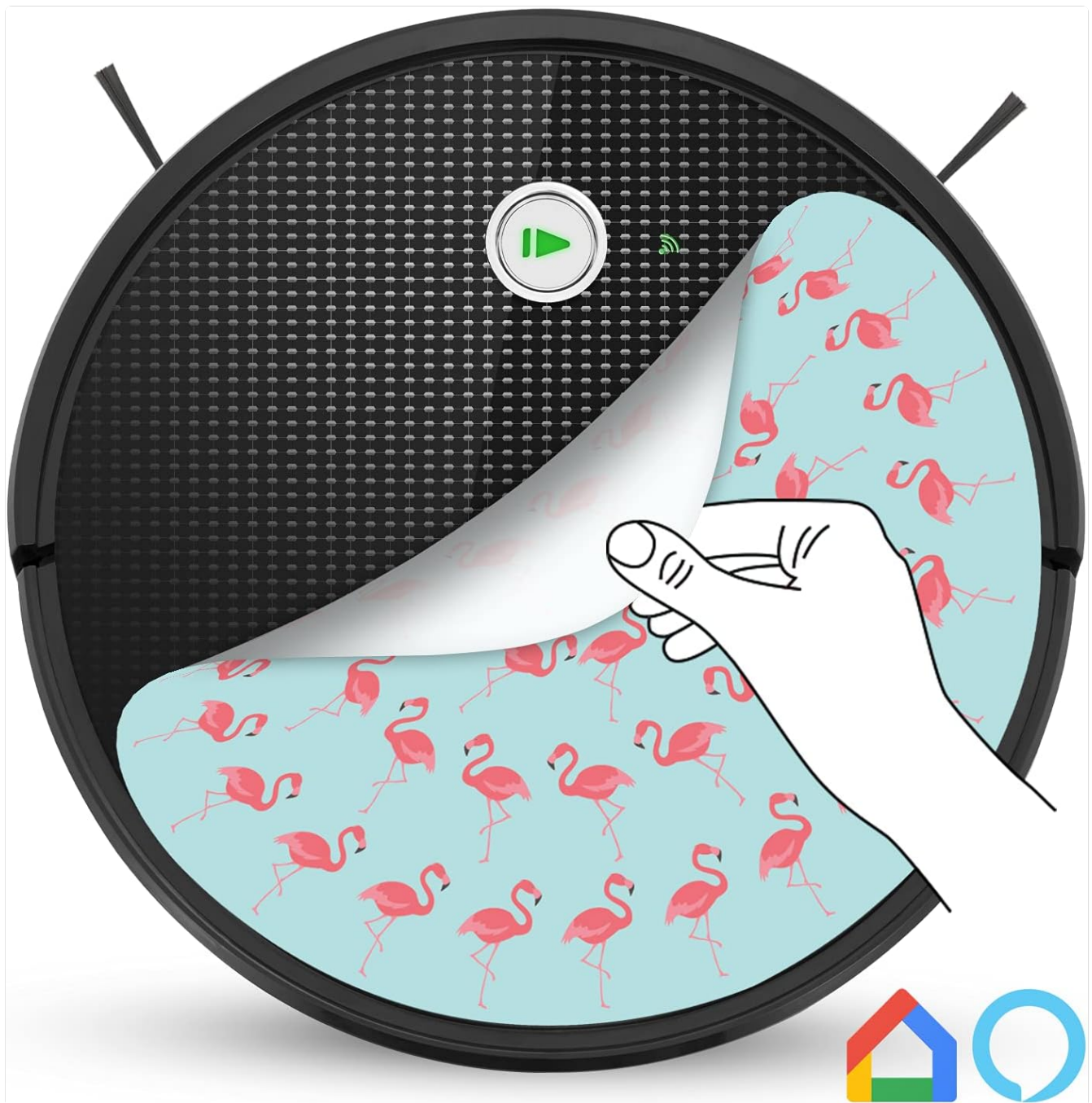


Figure 4.2: Top view of the CREATE NETBOT S15 robot vacuum cleaner, illustrating the removal or application of a decorative sticker. A hand is shown peeling back a corner of the flamingo-patterned sticker, revealing the robot's black surface underneath. The Google Home logo is also visible in the bottom right corner, indicating smart home compatibility.

Robot Components:

- **Main Power Button/Indicator:** Initiates or pauses cleaning, indicates status.
- **Dustbin Release Button:** For removing the dustbin.
- **Charging Contacts:** Connects with the charging base.
- **Side Brushes:** Sweep debris into the main brush path.
- **Main Brush:** Collects dirt and debris.
- **Driving Wheels:** Allow the robot to move.
- **Universal Wheel:** Provides directional movement.
- **Cliff Sensors:** Detect edges and prevent falls.
- **Bumper:** Detects obstacles.

- **Water Tank:** Holds water for mopping.
- **Mop Cloth:** Attaches to the water tank for scrubbing.

Charging Base:

- **Charging Contacts:** Connect with the robot.
- **Power Indicator:** Shows charging status.
- **Power Port:** Connects to the power adapter.

5. SETUP

5.1 Install Side Brushes

Press the side brushes onto the posts at the bottom of the robot until they click into place.

5.2 Place the Charging Base

- Place the charging base against a wall in an open, uncluttered area.
- Ensure there is at least 1 meter (3 feet) of clear space on both sides and 2 meters (6 feet) in front of the charging base.
- Plug the power adapter into the charging base and then into a wall outlet.

5.3 Initial Charging

Place the robot on the charging base, ensuring the charging contacts align. The robot will begin charging automatically. For first use, charge the robot for at least 6 hours to ensure optimal battery performance.

5.4 App Connection (Optional)

For advanced features and control, download the CREATE Home app from your smartphone's app store. Follow the in-app instructions to connect your NETBOT S15 to your home Wi-Fi network. The device is compatible with Google Home.

6. OPERATING INSTRUCTIONS

6.1 Starting/Pausing Cleaning

- **To Start:** Press the main power button on the robot or use the app.
- **To Pause:** Press the main power button again or use the app.
- **To Send Home:** Press and hold the main power button for 3 seconds, or use the app.

6.2 Cleaning Modes

The NETBOT S15 offers various cleaning modes:

- **Auto Clean:** The robot automatically cleans in a systematic pattern.
- **Spot Clean:** The robot cleans a specific area in a spiral pattern.

- **Edge Clean:** The robot cleans along walls and furniture edges.
- **Mop Mode:** Attach the filled water tank and mop cloth. The robot will vacuum and mop simultaneously.

6.3 Using the Mop Function

- Fill the water tank with clean water. Do not use detergents or harsh chemicals.
- Attach the mop cloth securely to the water tank.
- Slide the water tank into the robot until it clicks into place.
- Select Mop Mode via the app or remote control (if applicable).
- Remove the water tank and mop cloth after each use and clean them.



Figure 6.1: The NETBOT S15 robot vacuum cleaner in action, demonstrating its ability to clean scattered debris like lentils from a floor surface. The robot is black and circular, with its side brushes visible.

7. MAINTENANCE

Regular maintenance ensures optimal performance and extends the lifespan of your robot vacuum.

7.1 Emptying the Dustbin

Press the dustbin release button, pull out the dustbin, and empty its contents into a trash bin. Clean the dustbin with a dry cloth.

7.2 Cleaning the Filter

Remove the filter from the dustbin. Tap it gently to remove dust. Do not wash the HEPA filter with water. Replace the filter every 3-6 months, depending on usage.

7.3 Cleaning Side Brushes and Main Brush

Use the provided cleaning tool to remove hair and debris from the side brushes and main brush. Periodically remove the main brush cover to access and clean the main brush thoroughly. Replace worn brushes.

7.4 Cleaning Sensors and Charging Contacts

Wipe the cliff sensors, bumper sensor, and charging contacts on both the robot and the charging base with a clean, dry cloth. This prevents cleaning errors and ensures proper charging.

7.5 Cleaning the Water Tank and Mop Cloth

After each mopping session, empty any remaining water from the tank. Remove and wash the mop cloth by hand or machine. Allow both to air dry completely before reassembling.

8. TROUBLESHOOTING

Problem	Possible Cause	Solution
Robot does not turn on	Low battery; Power switch off	Charge the robot; Ensure power switch is on
Robot does not charge	Charging contacts dirty; Charging base not powered	Clean charging contacts; Check power adapter connection
Poor cleaning performance	Dustbin full; Brushes tangled; Filter clogged	Empty dustbin; Clean brushes; Clean/replace filter
Robot gets stuck frequently	Obstacles; Loose cables	Clear cleaning area; Secure cables
App connection issues	Incorrect Wi-Fi password; Router too far	Verify Wi-Fi credentials; Move robot closer to router; Restart robot/router

9. SPECIFICATIONS


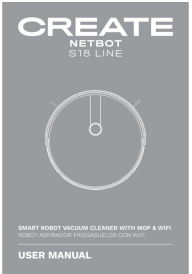
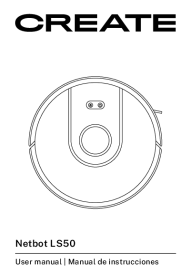
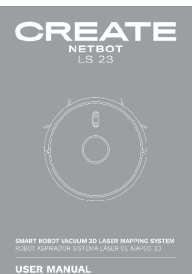
- **Brand:** CREATE
- **Model Number:** 10600 (NETBOT S15)
- **Dimensions:** 55.5 x 40 x 16.2 cm
- **Product Weight:** 6.06 kg
- **Filter Type:** Cartridge
- **Compatible Devices:** Google Home
- **Functions:** Sweeping, Vacuuming, Mopping, Scrubbing



10. WARRANTY AND SUPPORT

For warranty information, please refer to the warranty card included with your product or visit the official CREATE website. If you encounter any issues or require technical assistance, please contact CREATE customer support through their official channels. Provide your model number (NETBOT S15 or 10600) and a detailed description of the problem for efficient service.

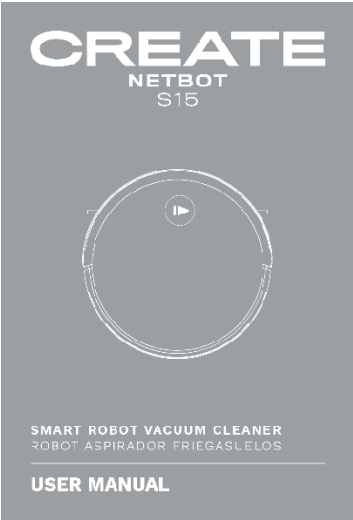
© 2023 CREATE. All rights reserved.

Related Documents - NETBOT S15

	<p>CREATE NETBOT S15 Smart Robot Vacuum Cleaner User Manual</p> <p>User manual for the CREATE NETBOT S15 smart robot vacuum cleaner, covering setup, app integration, safety, operation, maintenance, and troubleshooting.</p>
	<p>CREATE NETBOT S18 LINE Smart Robot Vacuum Cleaner User Manual</p> <p>Comprehensive user manual for the CREATE NETBOT S18 LINE Smart Robot Vacuum Cleaner with Mop & WiFi. Learn about safety instructions, product components, app usage, cleaning modes, and maintenance.</p>
	<p>CREATE Netbot LS50 Robot Vacuum Cleaner User Manual</p> <p>Comprehensive user manual for the CREATE Netbot LS50 robot vacuum cleaner, covering setup, operation, maintenance, troubleshooting, and app usage.</p>
	<p>CREATE NETBOT LS 23 Smart Robot Vacuum User Manual</p> <p>Comprehensive user manual for the CREATE NETBOT LS 23 Smart Robot Vacuum, detailing setup, operation, maintenance, and troubleshooting. Learn how to use its 3D Laser Mapping System for efficient floor cleaning.</p>

	<p>CREATE WIPEBOT Automatic Window Cleaner User Manual</p> <p>User manual for the CREATE WIPEBOT automatic window cleaner by IKOHS. This guide provides detailed instructions on setup, operation, safety, troubleshooting, and technical specifications for efficient and safe window cleaning.</p>
	<p>CREATE Wipebot Pro User Manual</p> <p>Official user manual for the CREATE Wipebot Pro, a robotic window cleaner. Contains detailed instructions for setup, operation, safety precautions, and troubleshooting to ensure optimal performance.</p>

Documents - CREATE – NETBOT S15



[CREATE NETBOT S15 Smart Robot Vacuum Cleaner User Manual](#)

User manual for the CREATE NETBOT S15 smart robot vacuum cleaner, covering setup, app integration, safety, operation, maintenance, and troubleshooting.

lang: **score:29** filesize: 11.15 M page_count: 136 document date: 2021-04-15