

Reolink RLC-820A

Reolink RLC-820A 8MP 4K PoE Security IP Camera User Manual

Model: RLC-820A

INTRODUCTION

This manual provides detailed instructions for the installation, operation, and maintenance of your Reolink RLC-820A 8MP 4K PoE Security IP Camera. Please read this manual thoroughly before using the product to ensure proper functionality and safety. The Reolink RLC-820A features 4K Super HD resolution, AI-powered person and vehicle detection, Power over Ethernet (PoE) for simplified installation, and multiple recording options.

PRODUCT OVERVIEW

Key Features

- **4K Super HD Resolution:** Captures video at 8MP (3840x2160) for clear and detailed images, offering 1.6 times the clarity of 5MP and 4 times that of 1080p.
- **AI Person/Vehicle Detection:** Advanced detection technology distinguishes between people, vehicles, and other moving objects, reducing false alarms from minor movements like swaying leaves or insects.
- **Power over Ethernet (PoE):** Simplifies installation by transmitting both power and data through a single network cable.
- **Multiple Recording Options:** Supports motion-activated recording, scheduled recording, and 24/7 continuous recording.
- **Local Storage:** Records footage to a microSD card (up to 256GB, sold separately) or a Reolink NVR. FTP server storage is also supported.
- **Instant Motion Alerts:** Sends real-time app push notifications and email alerts upon detecting threats.
- **Night Vision:** Equipped with infrared LEDs for clear surveillance in low-light conditions up to 30 meters.
- **Built-in Microphone:** Records audio along with video for enhanced surveillance.
- **Remote Access:** View live feeds, playback recordings, and manage settings via the Reolink App or Client software on smartphones and PCs.
- **Time-Lapse Function:** Capture long-term events in a condensed video format.
- **Weatherproof Design:** IP66 rated for outdoor use, protecting against dust and water ingress.

4K高画質、快適な防犯視覚饗宴



Image: A visual comparison demonstrating the superior clarity of 4K UHD (3840x2160) resolution compared to 1080p (1920x1080) for outdoor surveillance.

Package Contents

The following items are included in your Reolink RLC-820A package:

- Reolink RLC-820A Camera
- 1-meter Network Cable

- Waterproof Lid
- Mounting Template
- Mounting Screws
- Surveillance Sign
- Quick Start Guide

Note: A DC power adapter and PoE switch are sold separately and are required for operation if not using a PoE NVR.



Image: Reolink RLC-820A camera and its included accessories, such as a network cable, waterproof lid, mounting template, screws, and a surveillance sign.

SETUP AND INSTALLATION

1. Powering the Camera

The RLC-820A camera supports Power over Ethernet (PoE) for simplified power and data transmission. You can power

the camera using one of the following methods:

1. **PoE Switch/Injector:** Connect the camera to a PoE switch or injector using a single Ethernet cable. This method provides both power and network connectivity.
2. **DC Power Adapter:** If a PoE switch is not available, connect the camera to a 12V DC power adapter (sold separately) and a standard router via an Ethernet cable for network access.



Image: Diagram illustrating how the Reolink RLC-820A camera connects to a PoE switch via a single LAN cable for both power and data transmission.

2. Initial Configuration

After connecting the camera, you can perform initial setup and registration using the free Reolink App, PC Client software, or a web browser (Edge, Chrome, Firefox, Safari).

- Download the Reolink App from the App Store or Google Play.
- Follow the in-app instructions to add your camera and complete the initial setup, including setting a password.



Image: Icons for Reolink App on Apple App Store and Google Play Store.

3. Physical Installation

The RLC-820A is designed for outdoor use and can be mounted on ceilings or walls. Use the provided mounting template and screws for secure installation.

- Choose a location that provides the desired viewing angle and is within range of your network connection.
- Use the mounting template to mark screw holes.

- Drill pilot holes and secure the camera using the provided screws.
- Ensure all cable connections are protected with the waterproof lid, especially for outdoor installations.

AI人体・車両検知



メール



アプリ通知



FTP

人体



車両



Reolink

[今]

警報

820Aカメラから人の動きが検出されました。



Gmail

[今]

2022/2/6 14:44:19に、820Aカメラから人の動きが検出されました。

Image: A Reolink RLC-820A camera mounted on a ceiling, demonstrating its installation flexibility.

OPERATING INSTRUCTIONS

1. Live View and Playback

Access live video streams and review recorded footage through the Reolink App or Client software.

- Open the Reolink App or Client and select your camera from the device list.
- The live view will display automatically.
- To access playback, navigate to the playback section within the app/client and select the desired date and time.

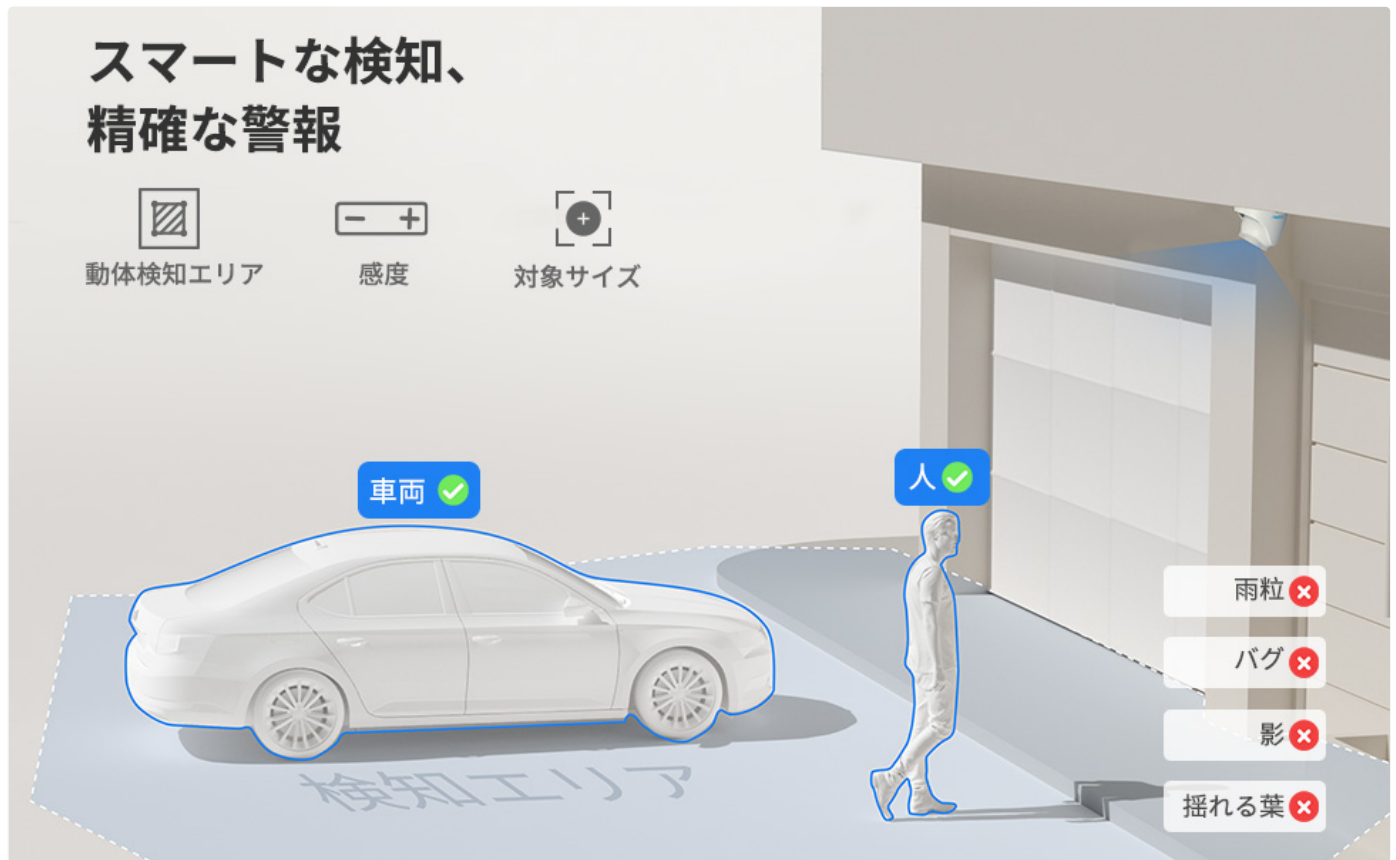


Image: Reolink camera footage being viewed simultaneously on a desktop monitor, laptop, tablet, and smartphone, demonstrating remote access capabilities.

2. AI Detection and Alerts

The RLC-820A features intelligent detection to minimize false alarms.

- **Person/Vehicle Detection:** The camera can differentiate between human and vehicle shapes, triggering alerts only for relevant events.
- **Motion Zones:** Configure specific areas within the camera's view to detect motion, ignoring irrelevant zones.
- **Sensitivity Adjustment:** Adjust the detection sensitivity to suit your environment and reduce unwanted alerts.
- **Alerts:** Receive instant push notifications on your smartphone or email alerts when motion is detected.

複数の録画保存経路 購読料不要



マイクロSDカード
最大256GB
(別売り)



Reolink NVR
録画機対応
FTP/NAS
(別売り)

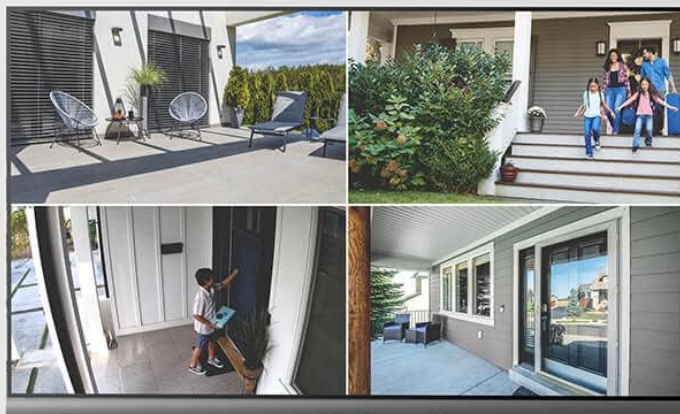


Image: A visual representation of the Reolink RLC-820A's AI detection capabilities, highlighting a person and a vehicle with detection boxes and showing app notifications.

3. Recording Modes

Choose from three recording modes based on your surveillance needs:

- **Motion-Activated Recording:** Records only when motion is detected, saving storage space.
- **Scheduled Recording:** Records during specific time periods set by the user.

- **24/7 Continuous Recording:** Records continuously, ensuring no event is missed. This requires sufficient storage capacity (microSD card or NVR).

どこからでも遠隔操作



Image: An illustration showing the various recording storage options for the Reolink RLC-820A, including microSD card (up to 256GB) and Reolink NVR/FTP/NAS.

4. Time-Lapse Function

The time-lapse feature allows you to capture dynamic long-term events, such as construction projects or changing

weather patterns, and condense them into short, engaging videos.

- Access the time-lapse settings in the Reolink App or Client.
- Configure the capture interval and duration.
- The camera will automatically compile the images into a time-lapse video.



Image: A visual demonstration of the time-lapse function, showing a sequence of images transitioning from day to night over a city skyline.

MAINTENANCE

- **Regular Cleaning:** Periodically clean the camera lens with a soft, dry cloth to ensure clear image quality. Avoid abrasive cleaners.
- **Firmware Updates:** Check for and install the latest firmware updates through the Reolink App or Client. Firmware updates often include performance improvements and security enhancements.
- **Cable Inspection:** Regularly inspect all cables for any signs of wear or damage, especially for outdoor installations. Ensure waterproof connections remain sealed.
- **Storage Management:** If using a microSD card, periodically review and manage stored footage to prevent the card from filling up, especially if not set to overwrite old recordings.



同梱物一覧

注：DCアダプタは別売りです。



RLC-820A



1mネットケーブル



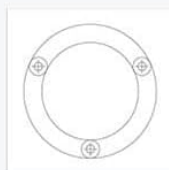
防犯標識



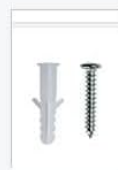
防水蓋



日本語説明書



取付テンプレート



ネジ

Image: The Reolink RLC-820A camera being sprayed with water, illustrating its IP66 weatherproof rating for outdoor durability.

TROUBLESHOOTING

Common Issues and Solutions

- Camera not powering on:
 - Ensure the PoE switch or injector is powered on and functioning correctly.

- If using a DC adapter, verify it is properly connected and providing the correct voltage (12V).
- Check the Ethernet cable for damage and ensure it is securely connected.

- **No video feed:**

- Verify network connectivity. Ensure the camera is connected to your router/network.
- Check if the camera's IP address is correctly configured and accessible on your network.
- Restart the camera and your network equipment (router, PoE switch).

- **Frequent false alarms:**

- Adjust the motion detection sensitivity in the Reolink App/Client.
- Configure motion detection zones to exclude areas with frequent irrelevant movement (e.g., trees, busy roads).
- Ensure AI detection for person/vehicle is enabled to filter out non-human/vehicle movements.

- **Poor image quality:**

- Clean the camera lens.
- Ensure there are no obstructions in front of the lens.
- Check your network bandwidth; insufficient bandwidth can affect streaming quality.

- **Compatibility with third-party NVRs/Software:**

- The RLC-820A supports ONVIF protocol, allowing it to be added to many third-party software/NVRs like Blue Iris or Synology.
- For optimal performance and full feature access, using Reolink NVRs and software is recommended.
- Compatibility with third-party products is not guaranteed for all features.

SPECIFICATIONS

Feature	Detail
Model Name	RLC-820A
Video Capture Resolution	4K (8MP)
Effective Video Resolution	8 MP
Mounting Type	Ceiling/Wall Mount
Color	White
Number of Items	1
Included Components	RLC-820A Camera, 1M Network Cable, Waterproof Lid, Manual, Mounting Tools, Surveillance Sign, Screws
Channel Count	8 (referring to NVR compatibility)
Form Factor	Turret
Night Vision Range	30 meters

Frame Rate	25 fps, 15 fps, 10 fps, 2 fps
Voltage	5 Volts (for DC adapter, PoE provides 48V)
Product Dimensions (LxWxH)	14 x 14 x 14 cm
Product Weight	570 g
Light Source	Infrared
Special Features	HD Resolution, Motion Sensor, Local Recording, Night Vision
Connectivity Technology	Wired (Ethernet)
Recommended Use	Outdoor Security
Power Source	Corded Electric (PoE or DC adapter)
Supported Devices	Desktop, Laptop, iOS, Android
Connection Protocols	HTTPS, SSL, TCP/IP, UDP, HTTP, IPv4, UPnP, RTSP, RTMP, SMTP, NTP, DHCP, DNS, DDNS, FTP, P2P

WARRANTY AND SUPPORT

Reolink provides comprehensive support for its products:

- **Warranty:** The Reolink RLC-820A comes with a 2-year quality warranty.
- **Return Policy:** A 30-day full refund and free return guarantee is offered.
- **Customer Support:** 24/7 online support is available for any technical assistance or inquiries.
- **Transparency Verified:** Each product has a unique code that can be verified using the Transparency app to confirm authenticity.
- **Privacy:** Reolink is committed to protecting your privacy. Video data is encrypted using 2048-bit RSA, 128-bit AES-GCM algorithms, and TLS.

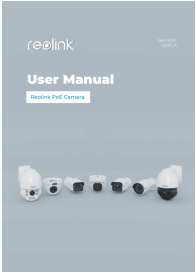


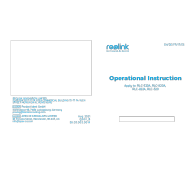

For further assistance, please visit the official Reolink website or contact their customer support.



© 2024 Reolink. All rights reserved.

Related Documents - RLC-820A

	<p>Reolink RLC-833A & RLC-1224A Operational Instructions</p> <p>Comprehensive operational instructions for Reolink RLC-833A and RLC-1224A PoE security cameras, covering setup, installation, troubleshooting, and specifications.</p>
--	--

	<p>Reolink PoE Camera User Manual - Setup, Features, and Troubleshooting</p> <p>Comprehensive user manual for Reolink PoE cameras, covering setup, installation, live view, motion detection, recording, app usage, smart home integration, and troubleshooting for various models.</p>
	<p>Reolink WiFi & PoE Camera and NVR Quick Setup Guide</p> <p>A concise guide to setting up your Reolink WiFi and PoE cameras, and NVR systems. Learn how to download the Reolink app, power on your devices, and connect them for a simple and hassle-free setup.</p>
	<p>Manual de Usuario Cámara Reolink PoE: Guía Completa de Instalación y Configuración</p> <p>Descubra cómo instalar, configurar y utilizar su cámara de seguridad Reolink PoE con este manual detallado. Aprenda sobre funciones, solución de problemas y más.</p>
	<p>Reolink RLC-520A/820A/822A/520 Operational Instruction Manual</p> <p>Comprehensive operational instructions and setup guide for Reolink RLC-520A, RLC-820A, RLC-822A, and RLC-520 surveillance cameras, covering installation, setup, troubleshooting, and specifications.</p>
	<p>Manuel d'Utilisateur : Caméras PoE Reolink - Configuration, Fonctionnalités et Dépannage</p> <p>Ce manuel d'utilisation fournit des instructions complètes pour les caméras de sécurité Reolink Power over Ethernet (PoE), couvrant la configuration, l'installation, l'utilisation des applications, l'intégration de maison intelligente et le dépannage pour une surveillance efficace.</p>