



Manuals.plus /

- › RKF /
- › RKF Pull Down Kitchen Faucet Model 198003 User Manual

## RKF 198003

# RKF Pull Down Kitchen Faucet Model 198003 User Manual

Comprehensive instructions for installation, operation, and maintenance.

## INTRODUCTION

---

Thank you for choosing the RKF Pull Down Kitchen Faucet Model 198003. This manual provides essential information for the safe and efficient installation, operation, and maintenance of your new kitchen faucet. Please read all instructions carefully before beginning installation and retain this manual for future reference.

**Important Safety Information:** Always turn off the main water supply before attempting any installation or maintenance. Wear appropriate personal protective equipment, such as safety glasses. If you are unsure about any step, consult a qualified plumber.



*Image: RKF Pull Down Kitchen Faucet Model 198003 in Matte Black finish, featuring a high-arc design, pull-down sprayer, and a single handle. A matching soap dispenser is also shown.*

## PRODUCT COMPONENTS

---

Verify that all components are present before beginning installation. If any parts are missing or damaged, please contact customer support.



Image: Exploded diagram illustrating the various components of the RKF Pull Down Kitchen Faucet, including the sprayer head, high arch spout, single handle, main body, deck plate, hot and cold water lines, and connectors.

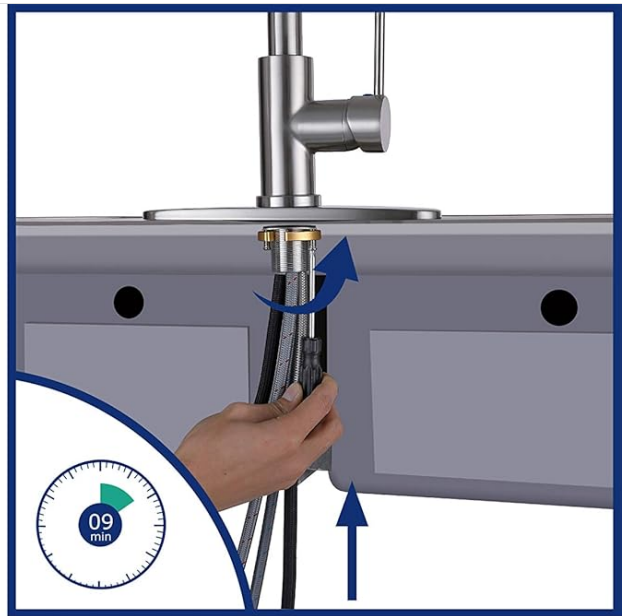
- Pull Down Faucet Body
- Sprayer Head (Two Function)
- Single Handle
- Deck Plate (8 inches, for 1 or 3-hole sinks)
- Hot & Cold Water Lines (23.6 inches, PEX CUPC hoses)
- Mounting Hardware (Screw nut, rubber gasket, steel gasket)
- Weight Ball for Pull-Out Hose
- G9/16 Connector & G1/2 Adapters
- Soap Dispenser

## INSTALLATION INSTRUCTIONS

Before installation, ensure your sink has a compatible hole configuration (1 or 3 holes). If using a 3-hole sink, the included deck plate will cover the unused holes. Turn off the water supply at the main valve before proceeding.



1. Put all hoses of faucet through sink or countertop hole.



2. Screw nut with rubber gasket and steel gasket in counter-clockwise by screwdriver until faucet does not wobble.



3. Take the black weight ball, open in counterclockwise, then clasp it to the black pull out hose.



4. Connect hot and cold water line hose to valve separately by wrench, but BE SURE DO NOT OVERTIGHTEN TO DAMAGE INTERNAL PARTS.

*Image: A visual guide demonstrating the four main steps for installing the RKF Pull Down Kitchen Faucet, including routing hoses, securing the faucet, attaching the weight ball, and connecting water lines.*

### 1. Step 1: Route Hoses

Insert all hoses of the faucet through the sink or countertop hole. Ensure the deck plate (if used) is properly seated.

### 2. Step 2: Secure Faucet

From underneath the sink, screw the mounting nut with the rubber gasket and steel gasket clockwise until the faucet is stable. Use a screwdriver to tighten securely, ensuring the faucet does not wobble.

### 3. Step 3: Attach Weight Ball

Open the black weight ball by turning it counter-clockwise. Clamp it to the pull-out hose at the designated position (typically 6-8 inches from the sprayer head connection point) to ensure proper retraction.

### 4. Step 4: Connect Water Lines

Connect the hot and cold water supply lines to the corresponding faucet hoses. Use a wrench to tighten, but **do not overtighten** to prevent damage to internal parts. Ensure all connections are secure and leak-free.

After installation, slowly turn on the main water supply and check for any leaks. Operate the faucet to flush out any debris from the lines.

## OPERATION GUIDE

---

### Water Flow and Temperature Control

The RKF faucet features a single handle for convenient control of both water temperature and flow volume. Move the handle up to increase flow and down to decrease or turn off. Move the handle left for hot water and right for cold water.

### Sprayer Functions

The pull-down sprayer head offers two distinct water modes:

- **Stream Mode:** Ideal for filling pots and general washing.
- **Spray Mode:** Provides a wider, more powerful spray for rinsing dishes and cleaning the sink.

Toggle between these modes using the button located on the sprayer head.



Image: A side-by-side comparison showing the two water output modes of the RKF faucet sprayer: a concentrated stream mode and a wide spray mode, activated by a button on the sprayer head.

## Pull-Down Sprayer and Swivel Spout

The faucet features a flexible pull-down spray wand with a 20-inch reach, allowing for extended maneuverability around your sink. The high-arc spout can swivel 360 degrees, providing ample clearance for large pots and pans and covering multiple sink basins.



Image: A collage demonstrating key operational features: the pull-down spray wand with its flexible hose, the 360-degree rotatable spout, the easy-clean nozzle with rubber spray holes, and the universal joint for full range movement of the spray head.

## Soap Dispenser Operation

The included soap dispenser can be refilled from the top by simply lifting the pump head and pouring soap into the bottle underneath the counter. Press the pump head to dispense soap.

## MAINTENANCE AND CARE

Proper care will ensure the longevity and appearance of your RKF kitchen faucet.

- **Cleaning the Finish:** Clean the faucet regularly with a soft cloth and mild soap. Avoid abrasive cleaners, harsh chemicals, or scouring pads, as these can damage the matte black finish.
- **Cleaning the Nozzle:** The sprayer head features easy-clean rubber nozzles. To remove mineral buildup, gently rub the rubber nozzles with your finger or a soft brush.
- **Checking for Leaks:** Periodically inspect all connections under the sink for any signs of leaks. Tighten connections if necessary, but do not overtighten.
- **Cartridge Maintenance:** The faucet is equipped with a high-quality ceramic CUPC cartridge designed for long-lasting performance. If you experience persistent drips or flow issues not resolved by cleaning the aerator, the cartridge may need inspection or replacement. Contact customer support for assistance.

## TROUBLESHOOTING

---

Refer to the table below for common issues and their solutions.

Problem	Possible Cause	Solution
Low water flow	Clogged aerator; kinked supply lines; partially closed shut-off valves.	Unscrew and clean the aerator; check and straighten supply lines; ensure shut-off valves are fully open.
Water leaks from handle base	Loose packing nut; worn cartridge.	Tighten the packing nut; replace the ceramic cartridge if necessary.
Sprayer head does not retract fully	Weight ball improperly positioned or too light; obstruction under sink.	Adjust the position of the weight ball on the pull-out hose; clear any obstructions.
Water drips from spout	Worn cartridge; debris in cartridge.	Replace or clean the ceramic cartridge.
No hot or cold water	Supply line kinked; shut-off valve closed; water heater issue.	Check and straighten supply lines; ensure shut-off valves are open; verify water heater operation.

## PRODUCT SPECIFICATIONS

---

Key technical details for the RKF Pull Down Kitchen Faucet Model 198003:

- **Brand:** RKF
- **Model:** 198003
- **Mounting Type:** Deck Mount
- **Finish Type:** Matte Black
- **Material:** Ceramic (Cartridge), Metal (Body)
- **Number of Handles:** 1
- **Special Feature:** 360 Swivel Spout, Pull-Down Sprayer
- **Installation Type:** Single Hole (with optional deck plate for 3-hole sinks)
- **Handle Material:** Ceramic
- **Item Weight:** Approximately 5.29 pounds

- **Package Dimensions:** Approximately 23.9 x 11.9 x 3 inches

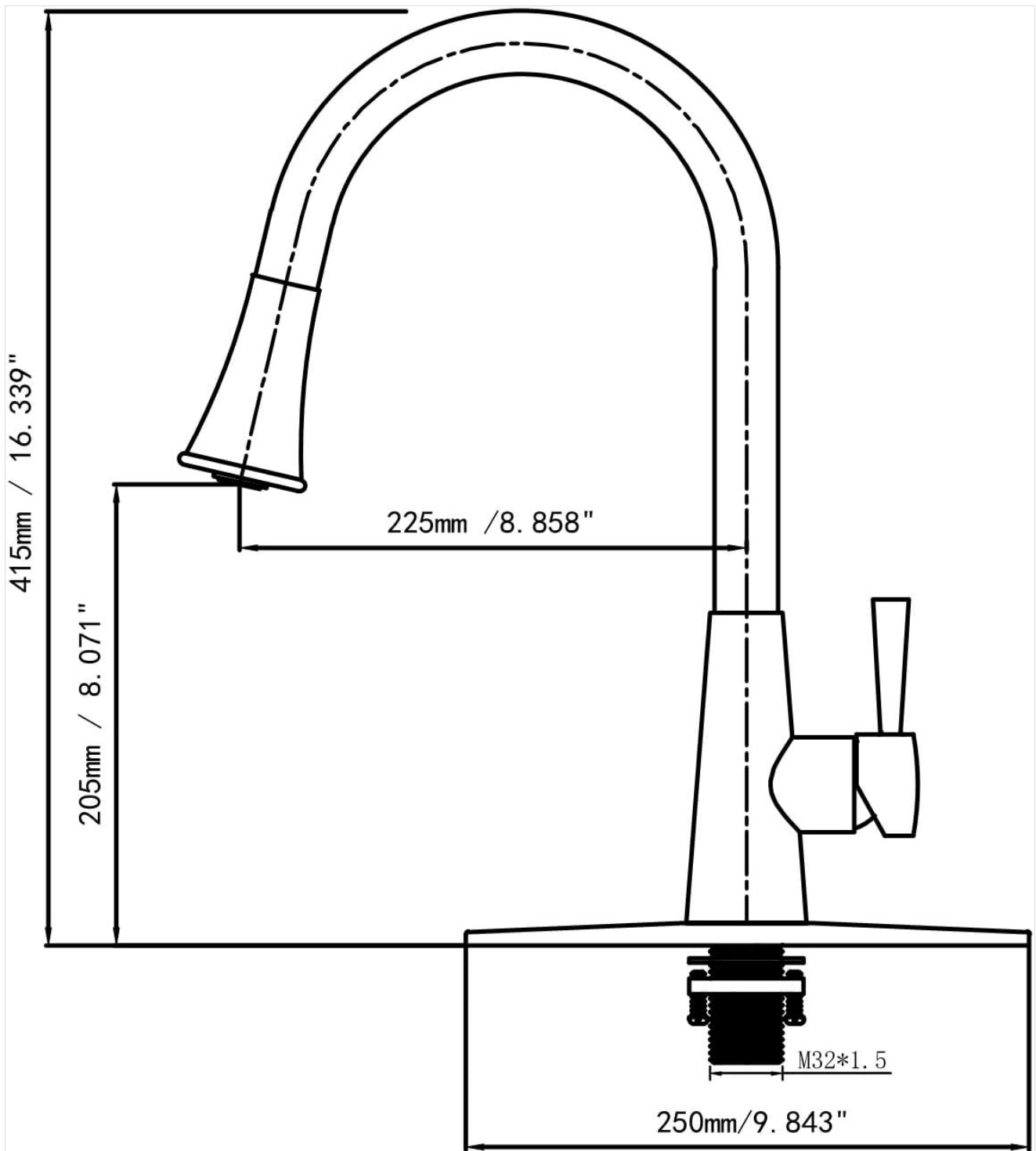


Image: A technical drawing displaying the key dimensions of the RKF Pull Down Kitchen Faucet, including height (415mm / 16.339"), spout reach (225mm / 8.858"), and base width (250mm / 9.843").

## WARRANTY INFORMATION

---

The RKF Pull Down Kitchen Faucet Model 198003 comes with a limited warranty. For specific details regarding coverage, duration, and terms, please refer to the warranty documentation included with your purchase or contact RKF customer support. Proof of purchase may be required for warranty claims.

## CUSTOMER SUPPORT

---

For further assistance, technical support, or replacement parts, please contact RKF customer service. You can also

find more information and products by visiting the official RKF Store.

**RKF Official Store:** <https://www.amazon.com/stores/RKF/page/907B6DE4-2027-4005-93CF-AF84A3FF9642>