



[Manuals.plus](#) /

› [ASHATA](#) /

› ASHATA HW-425 Bluetooth 4.2 Stereo Audio Module User Manual

## ASHATA HW-425

# ASHATA HW-425 Bluetooth 4.2 Stereo Audio Module User Manual

Model: HW-425 | Brand: ASHATA

## 1. INTRODUCTION AND OVERVIEW

---

The ASHATA HW-425 is a compact and versatile Bluetooth 4.2 stereo audio module designed for integration into various DIY audio projects. This module facilitates low-loss, dual-channel stereo lossless audio playback, making it an ideal component for custom speaker systems, audio receivers, and other electronic applications. It operates with a standard 5V power supply and offers a reliable Bluetooth connection range of up to 20 meters in open environments.

Its precise design and high-quality materials ensure durability and ease of installation, providing a superior performance foundation for your audio system.

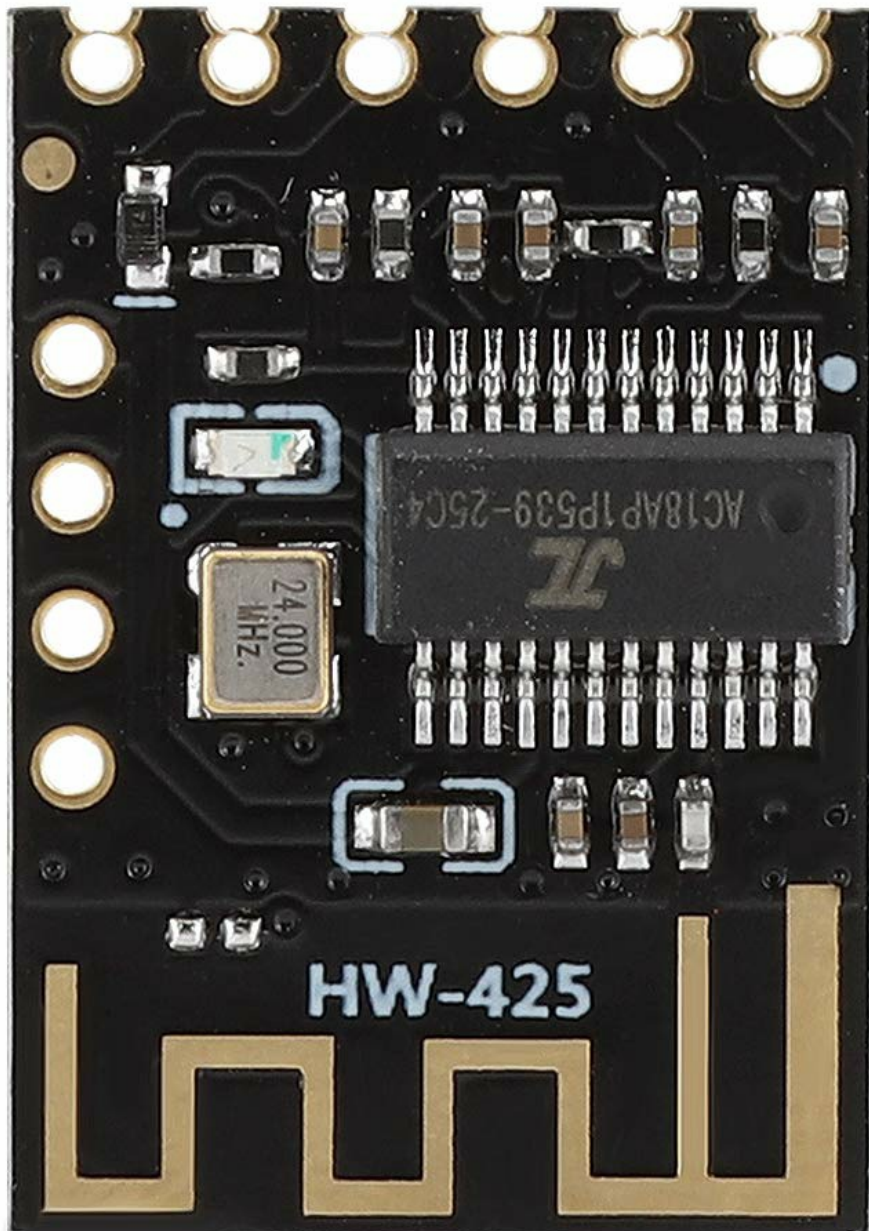


Figure 1: Overview of the ASHATA HW-425 Bluetooth 4.2 Stereo Audio Module.

## 2. KEY FEATURES

---

- **Bluetooth 4.2 Connectivity:** Utilizes a low-loss Bluetooth 4.2 system for stable and efficient wireless audio transmission.
- **Extended Connection Range:** Achieves a Bluetooth connection distance of up to 20 meters in open, unobstructed environments.
- **Dual-Channel Stereo Lossless Playback:** Supports high-fidelity, lossless stereo audio playback across two channels, suitable for various DIY speaker modifications.
- **Optimized Design for Integration:** Features precise cuts and interfaces, ensuring a perfect fit for mounting positions and simplifying installation.
- **Durable Construction:** Manufactured with high-quality materials to effectively resist corrosion and wear, ensuring long-term, reliable use.

- **Professional Chipset:** Incorporates a professional chipset to guarantee superior performance and stability within your audio system.

## DUAL CHANNEL STEREO LOSSLESS PLAYBACK

Widely used in a variety of speakers DIY modification.

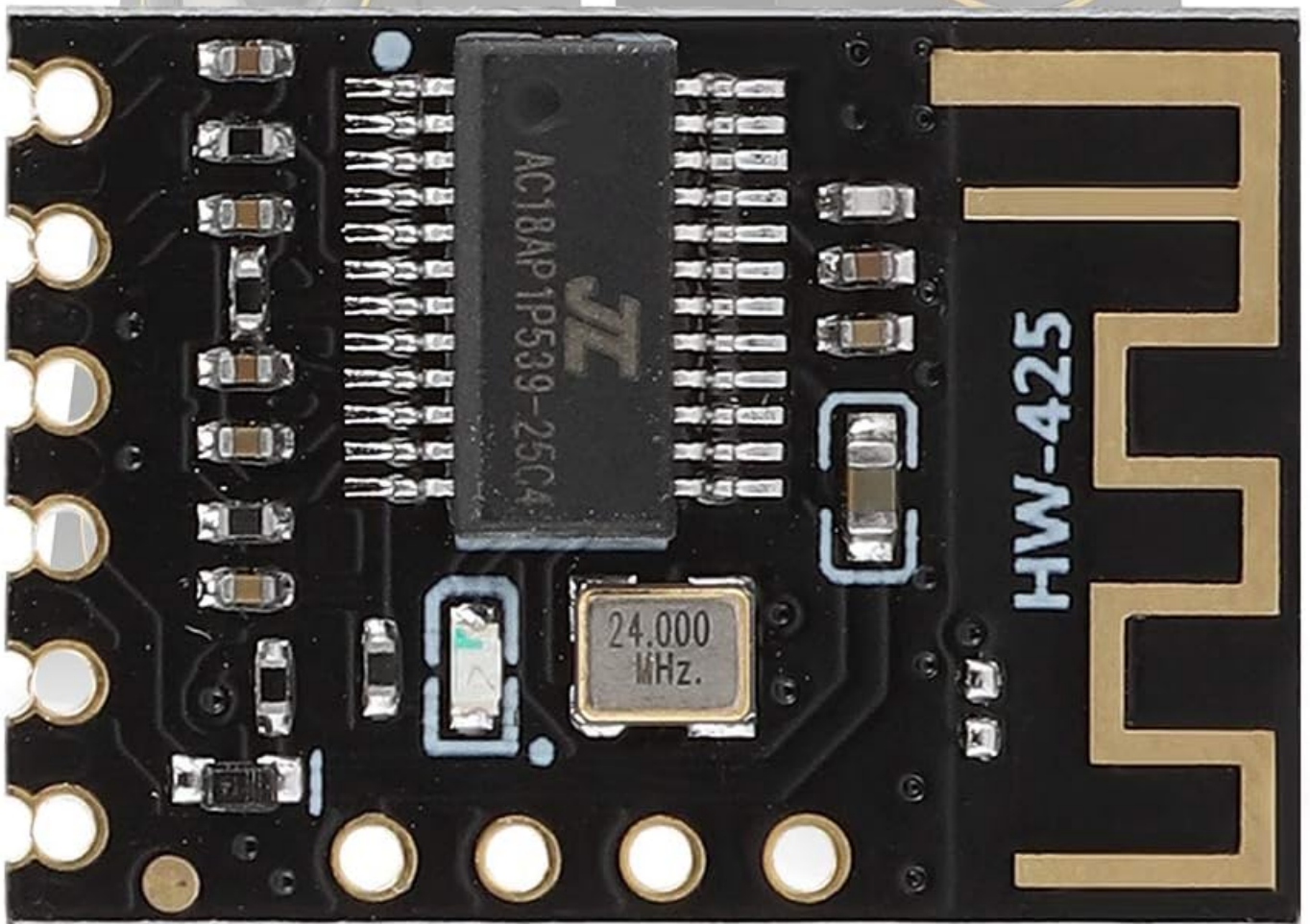


Figure 2: The HW-425 module supports dual-channel stereo lossless playback, ideal for DIY speaker projects.

### 3. SETUP AND INSTALLATION

---

Before installation, ensure all power sources are disconnected to prevent electrical hazards. The HW-425 module is designed for easy integration into custom circuits.

#### 3.1 Pinout Diagram

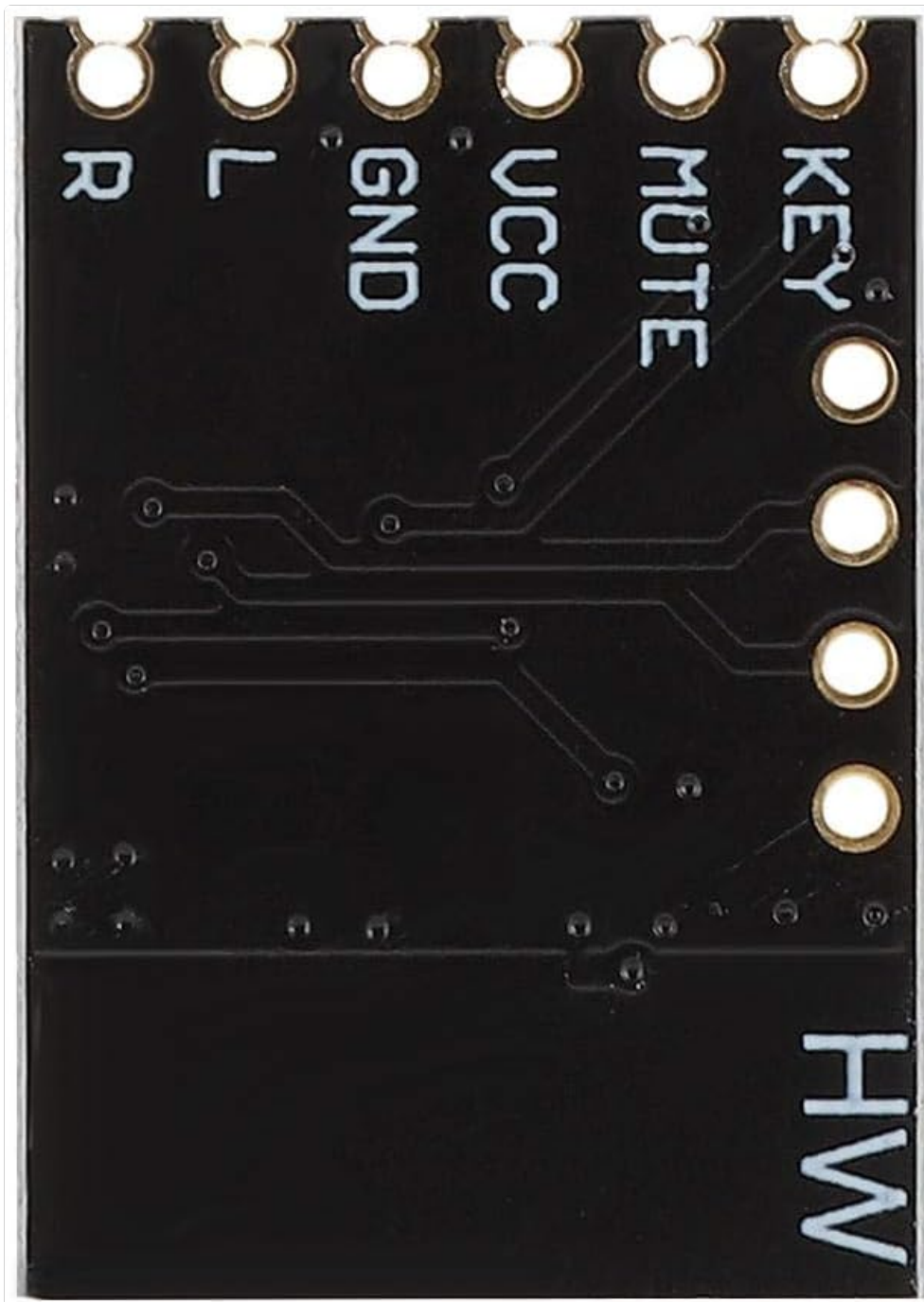


Figure 3: Pinout diagram of the HW-425 module, indicating connection points for power, audio, and control.

The module features several pins for power, audio output, and control:

- **VCC:** Power supply input (Default 5V).
- **GND:** Ground connection.
- **L:** Left audio channel output.
- **R:** Right audio channel output.
- **MUTE:** Mute control pin (functionality may vary based on implementation).
- **KEY:** Control key input (functionality may vary based on implementation, e.g., play/pause, next track).

### 3.2 Wiring Instructions

1. **Power Connection:** Connect the **VCC** pin to a stable 5V DC power source and the **GND** pin to the power source's ground. Ensure the power supply can provide sufficient current for the module and any connected components.
2. **Audio Output:** Connect the **L** (Left) and **R** (Right) pins to the respective audio input channels of your amplifier or

speaker system. Connect the audio ground to the **GND** pin.

3. **Control Pins (Optional):** If desired, connect the **MUTE** and **KEY** pins to your control circuit. Refer to your specific application's requirements for their usage.

## PRECISE CUTS AND INTERFACES

Ensure perfect fit, suitable for mounting positions and easy to install.

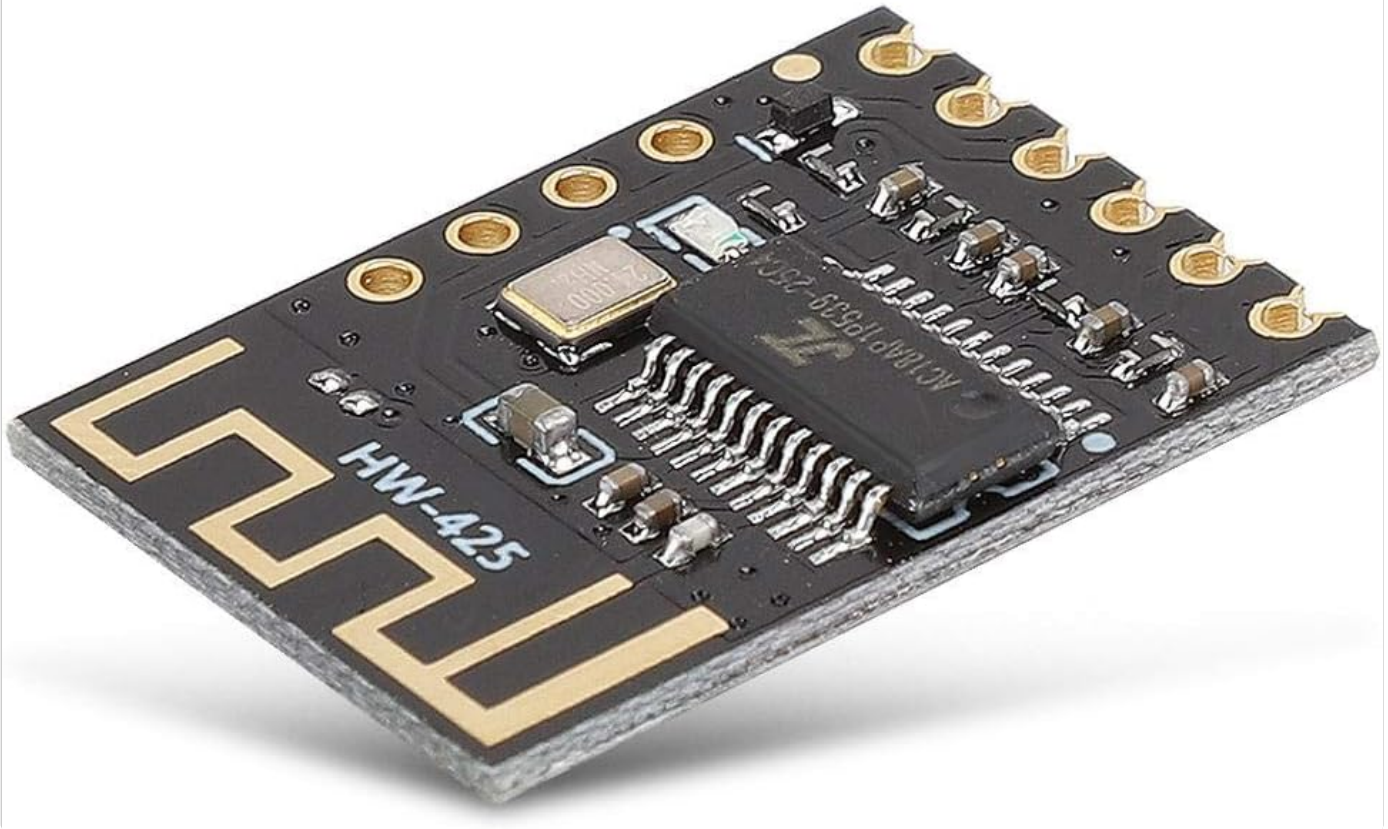


Figure 4: The module's precise design ensures easy integration and mounting.

## 4. OPERATING INSTRUCTIONS

---

1. **Power On:** Once correctly wired, apply 5V DC power to the VCC and GND pins. The module will power on and typically enter pairing mode, indicated by an LED (if present on your specific module variant).
2. **Bluetooth Pairing:**
  - On your Bluetooth-enabled device (smartphone, tablet, computer), navigate to the Bluetooth settings.
  - Scan for available devices.
  - Locate and select the device named "HW-425" or a similar identifier.
  - Once connected, the module's LED indicator (if present) may change state (e.g., solid blue) to confirm a successful connection.
3. **Audio Playback:** After successful pairing, play audio from your connected device. The sound will be transmitted wirelessly to the HW-425 module and output through the L and R pins to your connected amplifier/speakers.
4. **Control Functions (if implemented):**
  - **MUTE Pin:** If connected to a control circuit, activating this pin may temporarily mute the audio output.
  - **KEY Pin:** If connected, this pin can be used for basic playback controls such as play/pause or skipping tracks,

depending on the specific implementation.

## 5. SPECIFICATIONS

---

Feature	Detail
Product Type	Bluetooth Audio Module
Model	HW-425
Bluetooth Version	4.2 (Low-loss system)
Power Supply	Default 5V DC
Bluetooth Connection Distance	Approx. 20 meters (in open environment)
Audio Output	Dual-channel stereo lossless playback
Manufacturer	ASHATA
Manufacturer Reference	ASHATA0px5seo4na
Country of Origin	China
Compatible Devices	Laptop, Smart TV, Smartphone, Tablet
Data Link Protocol	Bluetooth
UPC / GTIN	738583057301

## 6. TROUBLESHOOTING

---

If you encounter issues with your ASHATA HW-425 module, refer to the following common problems and solutions:

- **No Power:**

- Ensure the 5V DC power supply is correctly connected to the VCC and GND pins.
- Verify the power supply is functional and providing the correct voltage.
- Check for any loose connections or damaged wires.

- **Cannot Pair with Bluetooth Device:**

- Make sure the module is powered on and within the 20-meter range of your device.
- Ensure Bluetooth is enabled on your device and it is in scanning mode.
- Try restarting both the module (by cycling power) and your Bluetooth device.
- Confirm no other device is currently paired with the module.

- **No Sound Output:**

- Verify that the module is successfully paired with your audio source device.
- Check the connections from the L, R, and GND pins to your amplifier or speakers.
- Ensure the volume on both your source device and the connected amplifier/speakers is turned up.
- If the MUTE pin is used, ensure it is not activated.

- **Poor Sound Quality or Intermittent Connection:**

- Reduce the distance between the module and the Bluetooth source device.
- Remove any obstacles (walls, large metal objects) that may interfere with the Bluetooth signal.
- Ensure there are no other strong wireless signals (Wi-Fi, other Bluetooth devices) operating nearby that could cause interference.
- Check the power supply for stability; an unstable power supply can affect performance.

## 7. MAINTENANCE

---

To ensure the longevity and optimal performance of your ASHATA HW-425 Bluetooth Audio Module, follow these maintenance guidelines:

- **Keep Dry:** Protect the module from moisture and liquids, as these can cause short circuits and damage components.
- **Avoid Extreme Temperatures:** Do not expose the module to excessively high or low temperatures, which can affect its electronic components.
- **Handle with Care:** Electronic modules are delicate. Avoid dropping, bending, or applying excessive force to the module.
- **Clean Gently:** If cleaning is necessary, use a soft, dry cloth. Avoid using harsh chemicals or abrasive materials. Ensure the module is powered off before cleaning.
- **Proper Ventilation:** Ensure adequate airflow around the module if it is enclosed in a casing, especially during prolonged operation, to prevent overheating.

# HIGH QUALITY MATERIALS

Effectively avoid corrosion and wear and durable use.

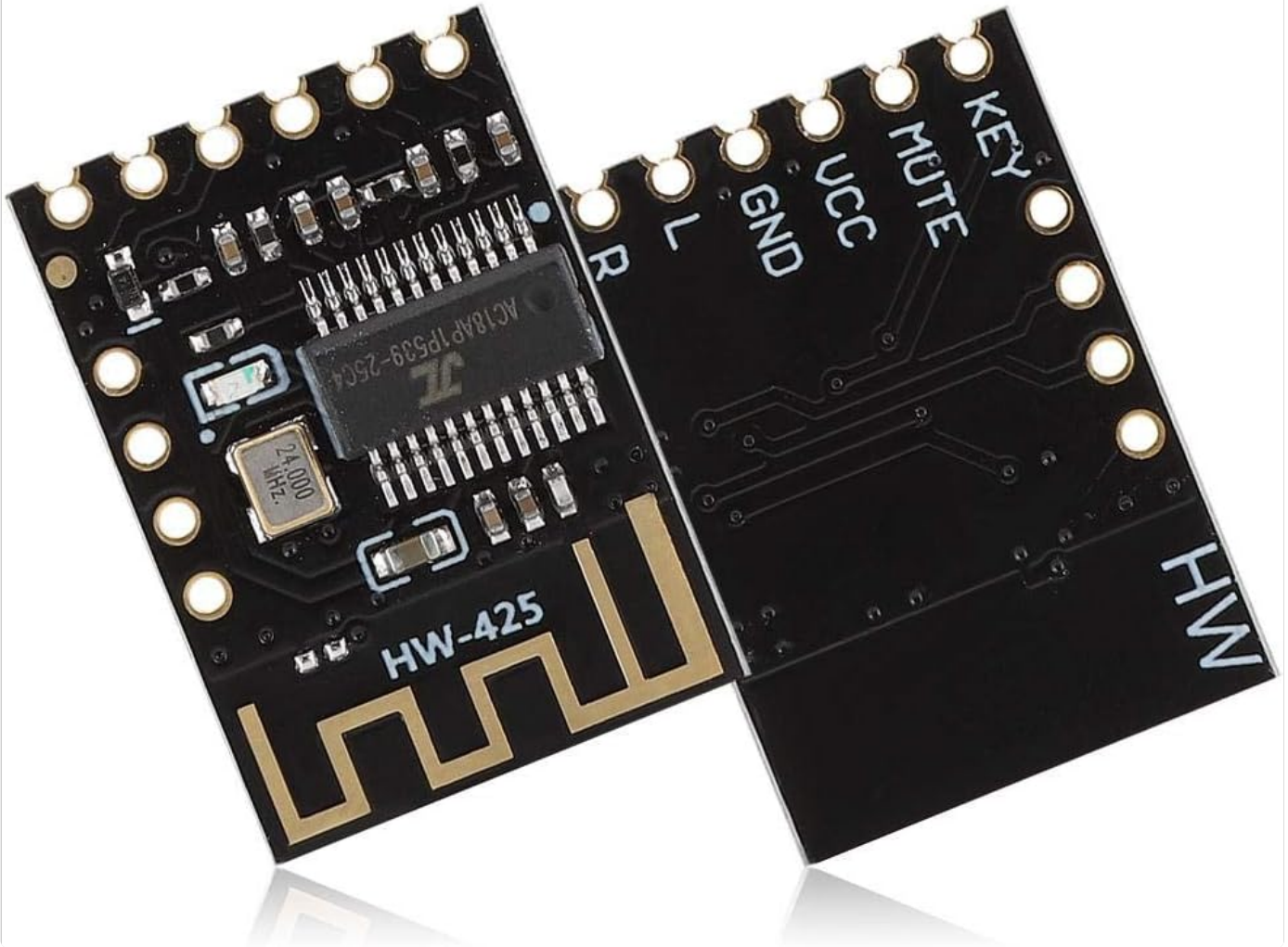


Figure 5: The HW-425 module is built with high-quality materials for durability.

## 8. WARRANTY AND SUPPORT

Specific warranty information for the ASHATA HW-425 module may vary depending on your region and point of purchase. Please refer to the documentation provided by your retailer or contact ASHATA customer support for detailed warranty terms and conditions.

For technical support, inquiries, or assistance with your ASHATA product, please visit the official ASHATA website or contact their customer service department. Keep your purchase receipt or proof of purchase handy when seeking support.

© 2023 ASHATA. All rights reserved.

This manual is for informational purposes only. Specifications are subject to change without notice.