

eRapta A43

eRapta A43 4.3-inch HD 1080P Backup Camera System User Manual

Model: A43

1. INTRODUCTION

The eRapta A43 backup camera system is designed to enhance driving safety by providing a clear rear view of your vehicle. This system features a 4.3-inch HD 1080P monitor and an IP69K waterproof camera with night vision capabilities. It is suitable for various vehicles including cars, trucks, RVs, tractors, buses, semi-trailers, and pickups, offering a reliable solution for safer maneuvering and parking.



Image 1.1: Overview of the eRapta A43 Backup Camera System.

2. PACKAGE CONTENTS

Please verify that all items listed below are included in your package. If any components are missing or damaged, please contact customer support.

- 1x 4.3-inch HD Monitor
- 1x Backup Camera (License Plate Mount)
- 1x 26ft Extension Cable (Video Cable)
- 1x Car Charger
- 1x Power Cable
- 2x Brackets (for monitor mounting)
- 1x User Manual (Quick User Guide)



Image 2.1: All components included in the eRapta A43 package.

3. SETUP AND INSTALLATION

Follow these steps to properly install your eRapta A43 backup camera system.

3.1 Monitor Installation

1. Attach the suction cup bracket to the back of the 4.3-inch monitor.
2. Clean the desired mounting surface on your dashboard or windshield.
3. Secure the suction cup bracket to the cleaned surface. Ensure a firm attachment.
4. Adjust the monitor angle for optimal viewing.

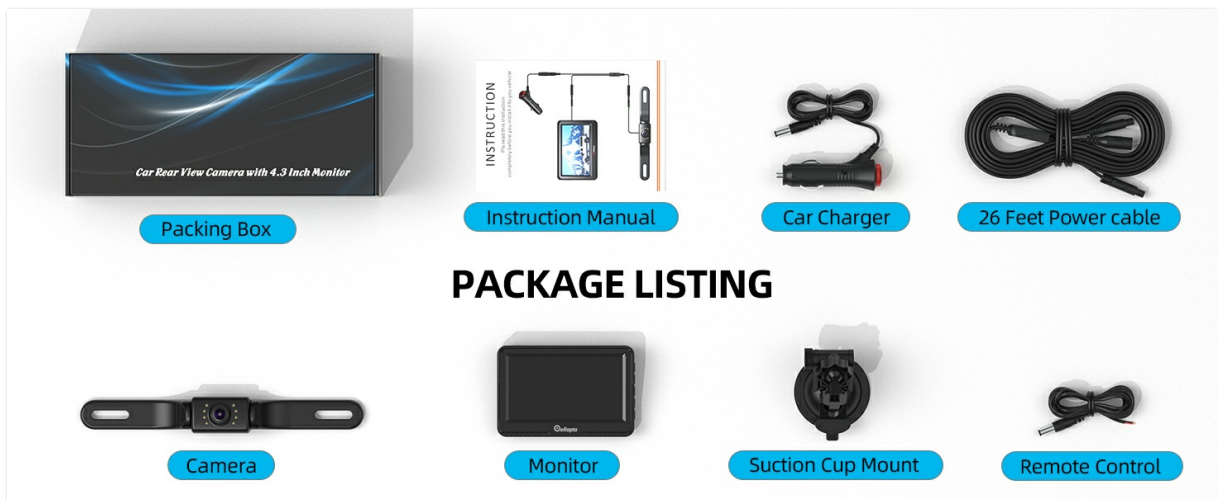


Image 3.1: Monitor mounted on a vehicle dashboard and windshield.

3.2 Camera Installation

1. Mount the backup camera to your vehicle's license plate area. Ensure it is securely fastened and does not obstruct the license plate.
2. The camera features an adjustable angle (up to 45° up or down) to achieve the best viewing perspective.

45° ADJUSTMENT

Choose the most suitable angle as needed.



Image 3.2: Backup camera mounted on a license plate, showing 45-degree adjustment capability.

3.3 Wiring Connections

The system offers two primary power supply methods:

- **Car Charger Power Supply:** Connect the monitor and camera directly using the provided 26ft extension cable and car charger. This is a plug-and-play method.
- **Reverse Light Power Supply:** For automatic activation when reversing, connect the camera's power cable to your vehicle's reverse light circuit. Consult a professional if unsure about this wiring method.

EASY INSTALLATION

One power source system.



Image 3.3: Wiring diagram for car charger power supply.

4. OPERATION

4.1 Powering On the System

If using the car charger, plug it into your vehicle's cigarette lighter socket. The monitor will power on automatically or can be manually switched on/off via the charger's button. If wired to the reverse light, the system will activate when the vehicle is put into reverse gear.

4.2 Display Features

The 4.3-inch LCD monitor provides a clear 1080P HD image, restoring true colors for enhanced visibility.

1080P HD



Image 4.1: The 4.3-inch HD monitor displaying a vivid image.

4.3 Night Vision

The camera is equipped with 8 LED lights and a 6-layer glass lens, providing excellent night vision to capture clear color images in low-light conditions, improving safety during nighttime maneuvers.

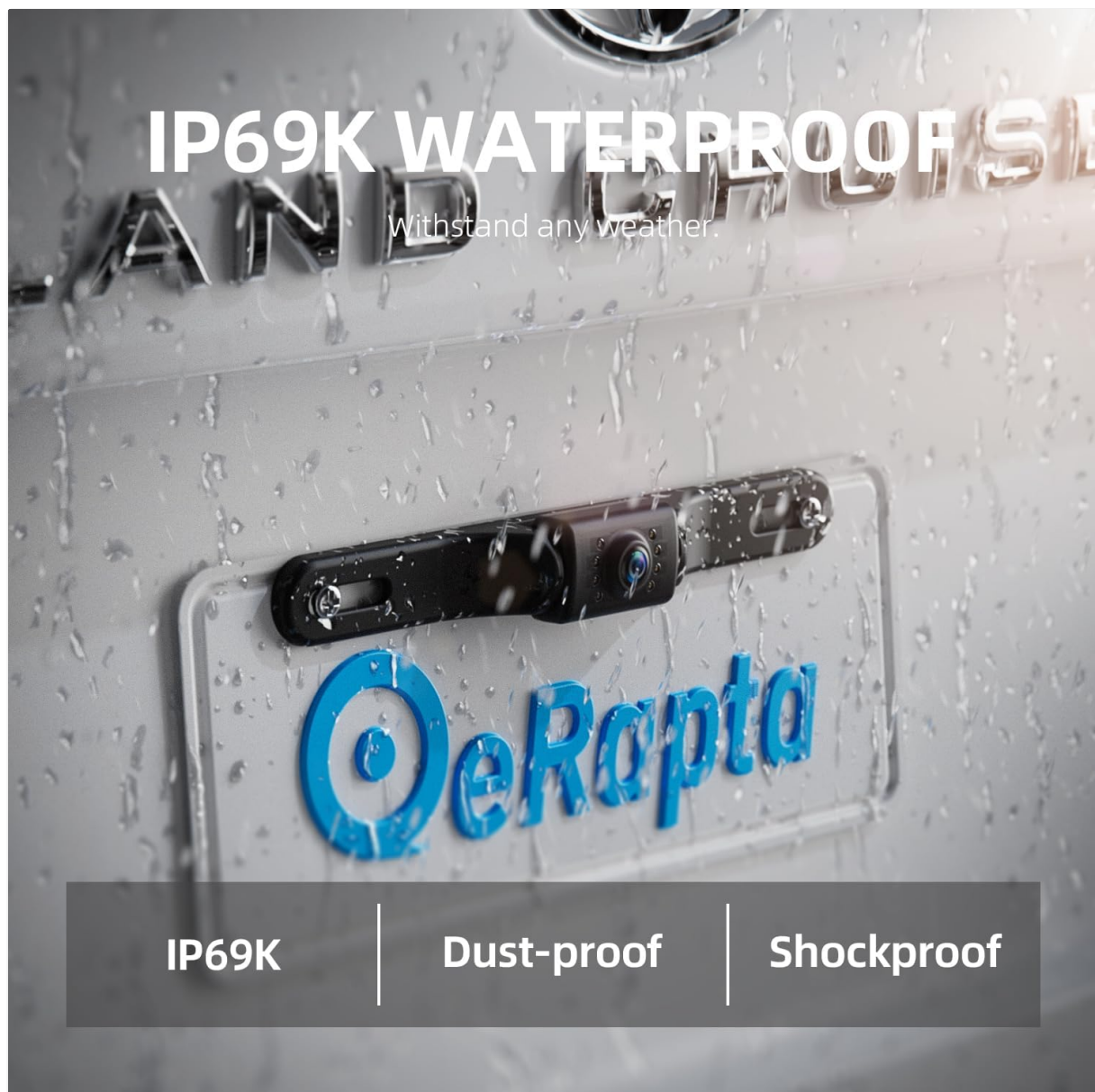


Image 4.2: Camera's night vision capability with 8 LEDs.

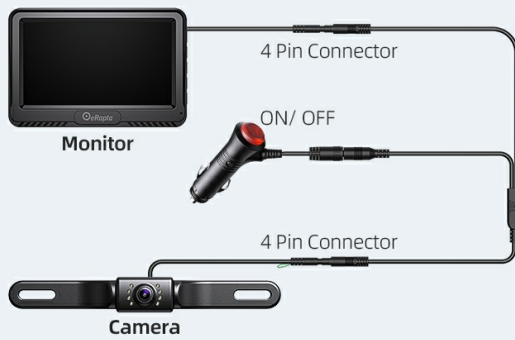
4.4 Parking Guide Lines (DIY)

The system features customizable parking guide lines. You can adjust their width and horizontal height to fit your vehicle and preferences. The guide lines can also be turned off if not desired.

- **(H)**: Move guide lines left or right.
- **(V)**: Move guide lines up or down.
- **(W)**: Adjust guide lines width.

OPTIONAL POWER SUPPLY METHODS

Powered by car charger



Powered by the reverse light

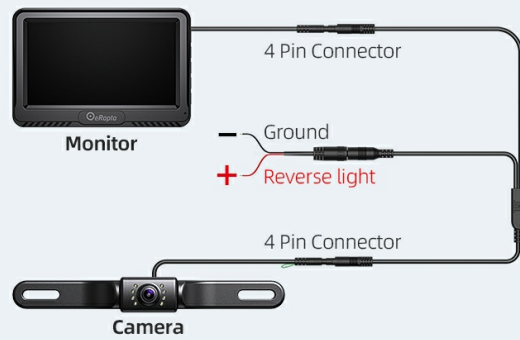


Image 4.3: Customization options for parking guide lines.

4.5 Mirroring Function

The camera system includes a mirroring function, allowing it to be used as either a rear view camera or a front camera, depending on your installation and preference.

5. MAINTENANCE

The eRapta A43 camera is designed with an IP69K waterproof rating, making it resistant to water, dust, and shock. This ensures reliable performance in various weather conditions.

- **Cleaning:** Regularly clean the camera lens and monitor screen with a soft, damp cloth to ensure clear visibility. Avoid abrasive cleaners.
- **Cable Inspection:** Periodically check all cables for any signs of wear or damage. Ensure connections remain secure.

PARKING SAFETY



Image 5.1: The IP69K waterproof camera enduring water exposure.

6. TROUBLESHOOTING

If you encounter issues with your eRapta A43 system, refer to the following common problems and solutions:

Problem	Possible Cause	Solution
No image on monitor	Loose power connection, faulty cable, camera not powered.	Check all power connections (car charger, reverse light). Ensure the extension cable is securely connected between the camera and monitor.
Image is delayed or flickers	Normal startup delay (approx. 3-4 seconds), unstable power.	A brief delay at startup is normal. If flickering persists, ensure stable power supply.
Poor image quality (blurry, dark)	Dirty camera lens, insufficient lighting, camera malfunction.	Clean the camera lens. Ensure adequate lighting for optimal night vision performance. If issues persist, contact support.

Problem	Possible Cause	Solution
Parking lines not visible or incorrect	Lines turned off, incorrect adjustment.	Access the monitor settings to enable and adjust the parking guide lines as needed.

7. SPECIFICATIONS

Feature	Detail
Model Number	A43
Monitor Screen Size	4.3 Inches
Display Technology	LCD
Camera Resolution	1080P HD
Optical Sensor Technology	CMOS
Real Angle of View	149 Degrees
Waterproof Rating	IP69K
Night Vision	8 LED lights, 6-layer glass lens
Voltage	12 Volts
Product Dimensions	4.3 x 3.25 x 0.75 inches (Monitor)
Item Weight	1.19 pounds (Total System)

8. WARRANTY AND SUPPORT

The eRapta A43 Backup Camera System comes with a **Two-Year Warranty**. Additionally, eRapta provides **Lifetime Technical Support** for this product. For any inquiries, technical assistance, or warranty claims, please contact eRapta customer support.