

j5create JCD543

j5create USB-C Triple Monitor Docking Station (JCD543) Instruction Manual

Model: JCD543 | Brand: j5create

1. INTRODUCTION

The j5create USB-C Triple Monitor Docking Station (JCD543) is designed to expand the connectivity of your computer, allowing for simultaneous connection to up to three external displays via HDMI, VGA, and DisplayPort/HDMI. This versatile docking station integrates multiple essential ports, including USB 3.1/SD/microSD card readers, Gigabit Ethernet, and USB Type-A ports with fast charging capabilities, all through a single USB-C connection to your host device.

Its thoughtful design includes a built-in notebook stand for improved heat dissipation and a flexible USB-C cable for convenient port placement. The JCD543 is compatible with Microsoft Windows 10 and macOS 10.11 or later, requiring driver installation and a USB-C 3.1 5Gbps port with Display Alt-mode and Power Delivery support for full functionality.

2. KEY FEATURES

- **Triple Display Support:** Connect up to three monitors simultaneously via HDMI, VGA, and DisplayPort/HDMI.
- **Integrated Notebook Stand:** Features a built-in stand for heat dissipation and ergonomic positioning.
- **Flexible USB-C Cable:** Designed with a flexible USB-C cord to accommodate various device USB-C port locations.
- **Expanded Connectivity:** Includes USB 3.1/SD/microSD card readers, and Gigabit Ethernet.
- **Fast Charging:** One USB Type-A port supports BC1.2 fast charging. The USB-C port supports PD 3.0 for notebook/smartphone charging.
- **Wide Compatibility:** Compatible with Microsoft Windows 10 and macOS 10.11 or later.
- **High-Speed Data Transfer:** USB 5 Gbps transfer speed for efficient data handling.

3. SETUP GUIDE

Follow these steps to set up your JCD543 docking station:

3.1 Unpacking and Overview

Carefully remove the docking station from its packaging. Familiarize yourself with the various ports available on the device.



Figure 3.1: JCD543 Docking Station Overview.



Figure 3.2: Detailed view of the 13 available ports on the docking station.

3.2 Driver Installation

For full functionality, especially for certain display outputs (like VGA) and optimal performance, driver installation is required. Please visit the official j5create website for the latest drivers compatible with your operating system (Windows 10 or macOS 10.11+).

3.3 Connecting to Your Laptop

1. Ensure your laptop has a USB-C 3.1 5Gbps port that supports Display Alt-mode and Power Delivery.
2. Locate the flexible USB-C cable integrated into the docking station. This cable can be extended from either side of the docking station for convenient connection.



Figure 3.3: Flexible USB-C cable can be extended from either side for optimal cable management.

3. Plug the USB-C cable from the docking station into the compatible USB-C port on your laptop.
4. If you wish to charge your laptop through the docking station, connect your laptop's USB-C power adapter to the "Power In" USB-C port on the docking station. This supports PD 3.0 up to 100W.



Figure 3.4: USB-C Power Delivery (PD) port for pass-through charging.

4. OPERATING INSTRUCTIONS

4.1 Connecting External Displays

The JCD543 supports up to three external displays simultaneously. Connect your monitors to the available HDMI, DisplayPort, and VGA ports on the docking station.

Supports up to 3 Displays on Mac & Windows

(Driver Installation Required)

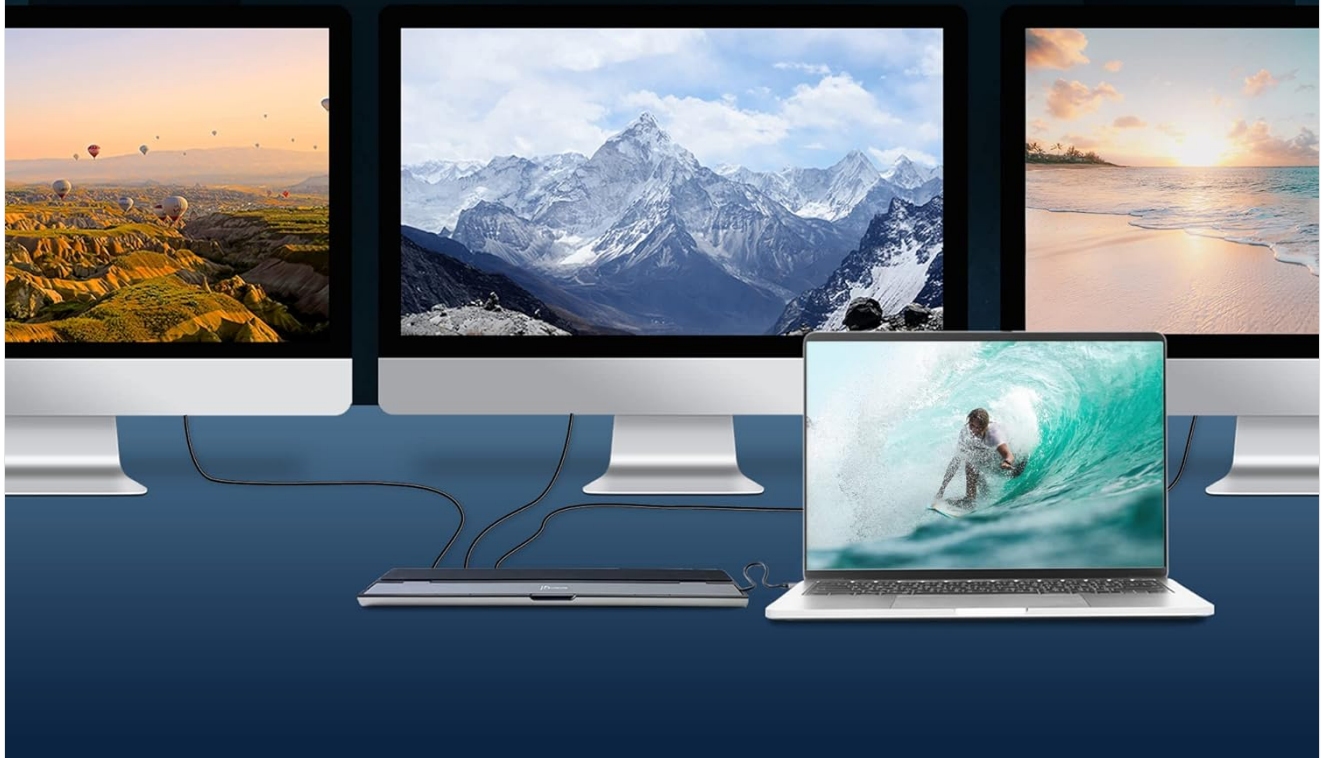


Figure 4.1: Visual representation of triple display setup with the docking station.

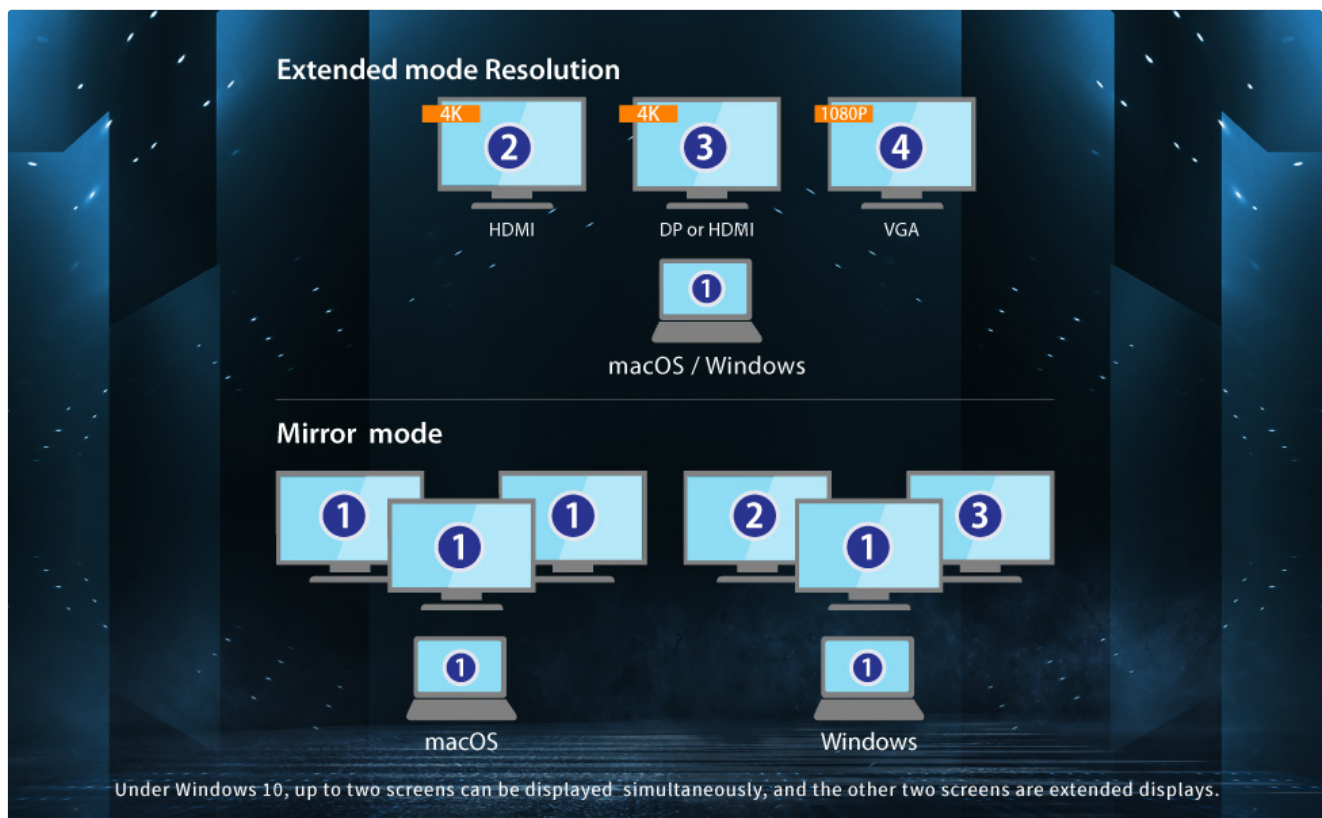


Figure 4.2: Examples of Extended and Mirror display modes supported.

Note: Under Windows 10, up to two screens can be displayed simultaneously, and the other two screens are extended displays. For macOS, display modes may vary based on system capabilities.

4.2 Using USB Ports and Card Readers

Connect your USB peripherals (keyboards, mice, external drives, etc.) to the USB 3.0 Type-A ports. One of these ports supports BC1.2 fast charging for compatible devices. Insert SD or microSD cards into their respective slots for data transfer.



Figure 4.3: Close-up of SuperSpeed USB 3.0 ports and USB-C downstream port.

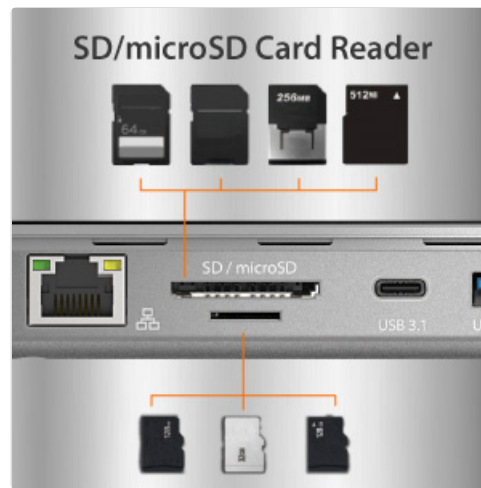


Figure 4.4: Dedicated slots for SD and microSD cards.

The USB 3.0 ports offer a transfer speed of 5 Gbps, significantly faster than USB 2.0 (480 Mbps).



Figure 4.5: Comparison of USB 3.0 (5 Gbps) and USB 2.0 (480 Mbps) transfer speeds.

4.3 Gigabit Ethernet Connection

For a stable and high-speed internet connection, connect an Ethernet cable from your router/modem to the Gigabit Ethernet port on the docking station.

4.4 Audio Jack

Use the 3.5mm Mic/Speaker combo jack to connect headphones, speakers, or a microphone.

5. SPECIFICATIONS

Feature	Detail
Model Number	JCD543
Product Dimensions	14.09"L x 3.48"W x 1.1"H (35.79 x 8.84 x 2.79 cm)
Item Weight	11 ounces (311.84 grams)
Color	Metallic, Black
Hardware Interface	USB Type C
Compatible Devices	MacBook Pro, Windows 10, macOS 10.11 or later
Total USB Ports	4 (3x USB 3.0 Type-A, 1x USB 3.1 Type-C downstream)
Number of Ports	13
Total HDMI Ports	2
Other Display Ports	1x DisplayPort, 1x VGA
Wattage (Power Delivery)	100 watts (PD 3.0 pass-through)
Card Readers	SD / microSD
Ethernet	Gigabit Ethernet
Audio	Mic / Speaker Combo Jack (3.5mm)

6. TROUBLESHOOTING

- **No Display Output:**
 - Ensure drivers are correctly installed for your operating system.
 - Verify your laptop's USB-C port supports Display Alt-mode.
 - Check all cable connections (USB-C to laptop, HDMI/DP/VGA to monitors).
 - Try restarting your laptop and reconnecting the docking station.
- **USB Ports Not Functioning:**

- Ensure the docking station is properly connected to your laptop.
- Test with different USB devices to rule out device-specific issues.
- Some USB devices (like MIDI keyboards) may require direct connection to the laptop or a different adapter.

- **Laptop Not Charging (Power Delivery):**

- Confirm your laptop's USB-C power adapter is connected to the "Power In" port on the docking station.
- Ensure your power adapter provides sufficient wattage (over 65W recommended for optimal performance).
- If the laptop enters sleep mode, charging might not resume automatically. Disconnect and reconnect the power cable to re-enable charging.

- **Ethernet Connection Issues:**

- Check the Ethernet cable connection to both the docking station and your network device.
- Verify network settings on your laptop.







7. MAINTENANCE

- **Cleaning:** Use a soft, dry cloth to clean the exterior of the docking station. Avoid liquid cleaners or abrasive materials.
- **Storage:** When not in use, store the docking station in a cool, dry place away from direct sunlight and extreme temperatures. Utilize the built-in cable storage compartment to keep the USB-C cable protected.
- **Heat Dissipation:** The integrated notebook stand is designed to assist with heat dissipation. Ensure proper airflow around the docking station and your laptop during use.
- **Cable Care:** Avoid bending or twisting the integrated USB-C cable excessively to prevent damage.

8. WARRANTY AND SUPPORT

For warranty information, technical support, or further assistance, please refer to the official j5create website or contact their customer service directly. Keep your purchase receipt for warranty claims.

Official j5create Website: www.j5create.com

	<p>j5create JCD543/JCD543P/JCD542 USB-C Docking Station Quick Installation Guide</p> <p>A quick installation guide for the j5create USB-C Dual/Triple Display Docking Station (models JCD543, JCD543P, JCD542), providing instructions for Windows and macOS driver installation, system requirements, and technical support information.</p>
	<p>j5create USB-C Docking Station Quick Installation Guide</p> <p>A quick installation guide for the j5create USB-C Dual/Triple Display Docking Station (JCD542, JCD543, JCD543P), covering system requirements and driver installation for Windows and macOS.</p>
	<p>j5create USB-C Multi Adapter JCD383/JCD533 Quick Installation Guide</p> <p>A quick installation guide for the j5create USB-C Multi Adapter (JCD383) and USB-C 4K HDMI Docking Station with Power Delivery (JCD533). This guide outlines features, system requirements, and important notes for setup and optimal performance.</p>
	<p>j5create JCD381 USB-C Dual HDMI Mini Dock: Installation Guide</p> <p>This guide provides step-by-step instructions for installing the j5create JCD381 USB-C Dual HDMI Mini Dock on Windows and macOS, detailing system requirements, setup, and warranty information.</p>
	<p>j5create USB Ethernet Adapter Quick Installation Guide</p> <p>This guide provides instructions for installing j5create USB 3.0 and USB Type-C Gigabit Ethernet Adapters on Windows and Mac operating systems. It covers driver installation, system requirements, and limited warranty information.</p>
	<p>j5create USB 3.0 Mini Dock Quick Installation Guide</p> <p>This guide provides quick installation instructions for the j5create USB 3.0 Mini Dock, covering system requirements and driver installation for both Windows and macOS operating systems.</p>