

FRITZ! 20002885

AVM FRITZ! Repeater 600 User Manual

Model: 20002885

INTRODUCTION

The FRITZ! Repeater 600 is a compact device designed to extend the range of your existing wireless network. It operates on the 2.4 GHz band, providing WLAN N connectivity at speeds up to 600 Mbps. This repeater supports Mesh WiFi, ensuring stable and seamless connections throughout your home or office network. Its compact design allows for discreet placement in any standard power socket.

PACKAGE CONTENTS

- 1 x FRITZ! Repeater 600
- Quick Installation Guide



Image: The FRITZ! Repeater 600 packaging, showing the device and branding.

SAFETY INSTRUCTIONS

- Ensure the device is plugged into a properly grounded power outlet.
- Do not expose the device to moisture or extreme temperatures.
- Do not open the device casing; refer servicing to qualified personnel.
- Keep the device away from direct sunlight and heat sources.

SETUP

1. Initial Placement

Plug the FRITZ! Repeater 600 into a power outlet located between your existing wireless router and the area where you want to improve WiFi coverage. The repeater's LED indicator will help you find an optimal position.

2. WPS Configuration (Recommended for FRITZ!Box and WPS-enabled routers)

1. Plug the FRITZ! Repeater 600 into a power outlet. Wait for the LED to indicate readiness (typically a

slow blink or solid light).

2. Press the WPS button on your wireless router.
3. Within two minutes, press the 'Connect' button on the FRITZ! Repeater 600.
4. The LED on the repeater will flash rapidly during the connection process and then become solid when successfully connected.

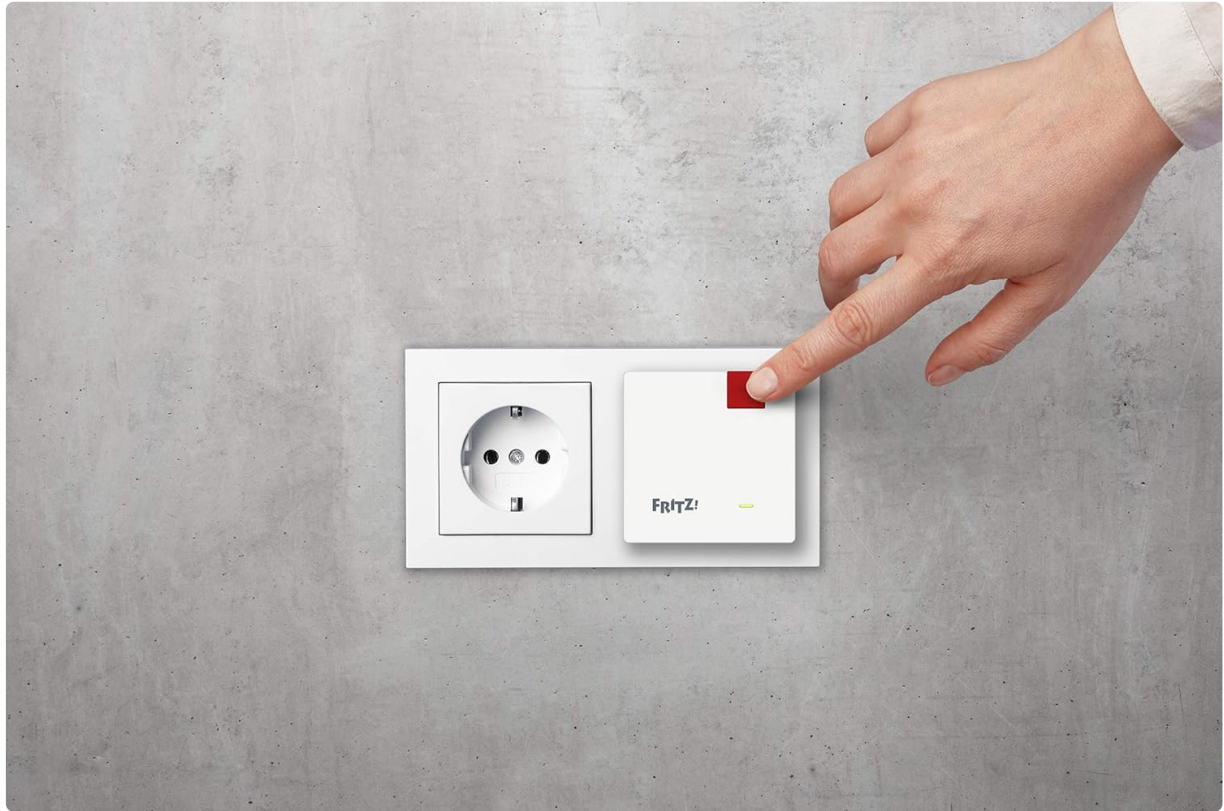


Image: A hand pressing the 'Connect' button on the FRITZ! Repeater 600, which is plugged into a wall socket.

3. Manual Configuration (if WPS is not available or fails)

1. Plug the FRITZ! Repeater 600 into a power outlet.
2. Connect a computer, tablet, or smartphone to the FRITZ! Repeater's default wireless network. The default network key is printed on the bottom of the device.
3. Open a web browser and navigate to the repeater's configuration interface (usually <http://fritz.repeater> or <http://192.168.178.2>).
4. Follow the on-screen instructions to select your existing wireless network and enter its password.

4. Optimal Placement

The LED indicator on the repeater provides feedback on the signal quality. A solid green light typically indicates a good connection. If the light is orange or red, consider moving the repeater closer to your main router until a stable green light is achieved. This ensures the best possible extension of your WiFi signal.

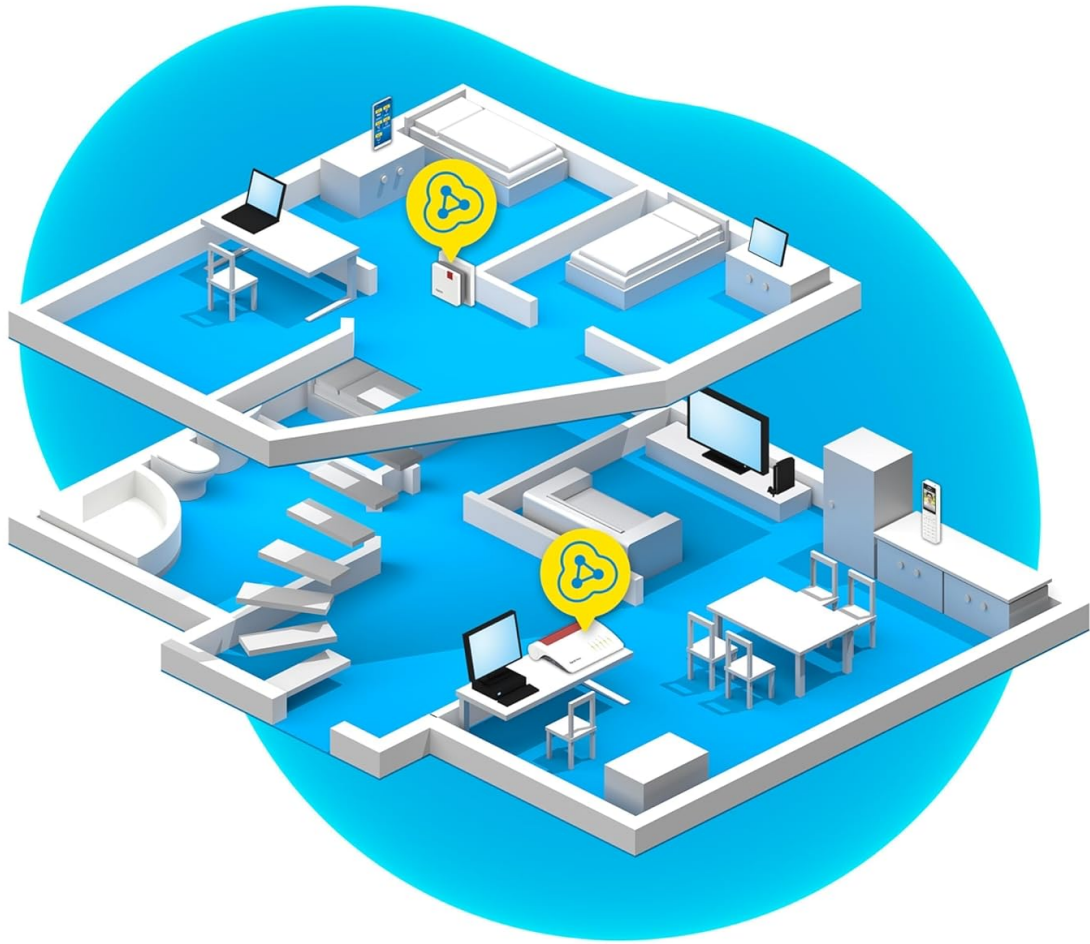


Image: An illustration depicting a multi-story house with FRITZ! Repeaters strategically placed to extend WiFi coverage to different rooms and floors.

OPERATION

LED Indicators

The LED on the front of the FRITZ! Repeater 600 provides visual status information:

- **Solid Green:** The repeater is successfully connected and providing good signal quality.
- **Flashing Green:** The repeater is attempting to connect or is in WPS mode.
- **Solid Orange/Red:** The repeater is connected but the signal quality is poor, or there is an issue. Consider repositioning the device.
- **Off:** The device is not powered on or is in a power-saving state.



Image: A close-up front view of the FRITZ! Repeater 600, highlighting its compact design and the LED indicator light.

Mesh WiFi Functionality

When used with a FRITZ!Box or another Mesh-enabled router, the FRITZ! Repeater 600 integrates into a Mesh WiFi system. This allows your devices to seamlessly switch between the router and the repeater without losing connection, ensuring optimal performance as you move around your network.

MAINTENANCE

- **Cleaning:** Disconnect the repeater from the power outlet before cleaning. Use a soft, dry cloth to wipe the exterior. Do not use liquid cleaners or solvents.
- **Firmware Updates:** Periodically check the AVM website for firmware updates for your FRITZ! Repeater 600. Updates can provide performance improvements, new features, and security enhancements.
- **Ventilation:** Ensure the repeater is not covered and has adequate airflow around it to prevent overheating.

TROUBLESHOOTING

No Connection / Poor Signal

- **Reposition the Repeater:** If the LED indicator is orange or red, move the repeater closer to your main wireless router.
- **Check Power:** Ensure the repeater is securely plugged into a working power outlet.
- **Verify Router Settings:** Confirm that your main wireless router is powered on and broadcasting a WiFi signal.
- **Re-establish Connection:** Try the WPS configuration process again. If unsuccessful, attempt manual configuration via a web browser.
- **Default Network Key:** If connecting directly to the repeater for manual setup, ensure you are using the correct default network key printed on the device.

Resetting the Device

If the repeater is unresponsive or you wish to revert to factory settings, a factory reset may be necessary. Consult the full manual or AVM support website for specific reset instructions, as this typically involves pressing and holding a small reset button for several seconds.

SPECIFICATIONS

Feature	Detail
Brand	FRITZ!
Model Name	FRITZ!Repeater 600
Model Number	20002885
Wireless Type	802.11n
Data Transfer Rate	Up to 600 Megabits Per Second
Frequency Band Class	2.4 GHz
Special Features	LED Indicator, Mesh WiFi, WPS
Compatible Devices	Repeaters, Routers
Product Dimensions	3 x 6.4 x 6.4 cm
Item Weight	88 g

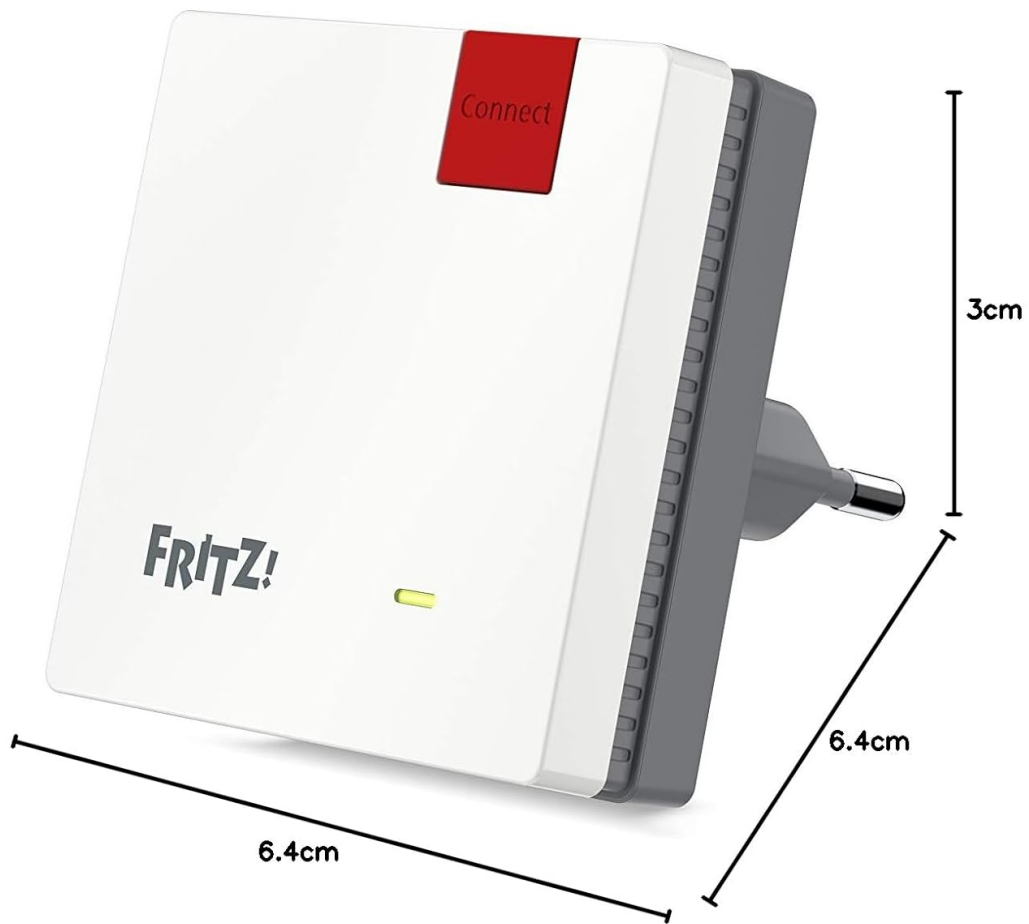


Image: The FRITZ! Repeater 600 shown with its physical dimensions: 3cm height, 6.4cm width, and 6.4cm depth.

WARRANTY INFORMATION

Specific warranty details for the FRITZ! Repeater 600 are not provided in the available product data. Please refer to the official AVM website or your purchase documentation for comprehensive warranty terms and conditions.

SUPPORT

Detailed support contact information is not provided in the available product data. For technical assistance, further documentation, or customer service, please visit the official AVM website or contact your retailer.