

manuals.plus /

› [Molekule](#) /

› [Molekule Air Mini Air Purifier User Manual - Model MN1BX-US](#)

Molekule MN1BX-US

Molekule Air Mini Air Purifier User Manual - Model MN1BX-US

Comprehensive instructions for your Molekule Air Mini device.

1. OVERVIEW

The Molekule Air Mini is an FDA-cleared 510(k) Class II medical device designed to destroy viruses and bacteria, and trap 95% of particles 0.3-1 micron in size. It utilizes Photo Electrochemical Oxidation (PECO) nanotechnology to address various airborne pollutants. This device is suitable for smaller spaces up to 250 sq. ft., such as studio apartments, bedrooms, and home offices.

Key Features:

- **FDA-Cleared:** Destroys viruses and bacteria, traps 95% of particles 0.3-1 micron.
- **PECO Technology:** Utilizes Photo Electrochemical Oxidation nanotechnology to destroy viruses, allergens, bacteria, mold, and chemicals.
- **Compact Design:** Ideal for smaller spaces up to 250 sq. ft.
- **Adjustable Fan Speeds:** Five fan speeds, from whisper quiet to boost.
- **PECO-Filter Status Indicator:** Easily track filter replacement schedule.
- **Portable:** Features a vegan-leather handle for easy relocation.
- **App-Enabled:** Monitor filter status and adjust fan speed remotely via the app.

2. SETUP INSTRUCTIONS

Follow these steps to set up your Molekule Air Mini for optimal performance.

1. Ensure the device is plugged into a working electrical outlet.
2. Remove all plastic wrap from the PECO-Filter before installation.
3. Turn the device lid clockwise until it fully clicks into place.
4. Place your Molekule Air Mini on a flat, stable surface.
5. If the lid is difficult to close, try placing the device on the floor and using your feet to stabilize it while turning the lid. It may require several attempts to lock into place.



Figure 2.1: The Molekule Air Mini air purifier, ready for use.

Your browser does not support the video tag.

Video 2.1: Official unboxing and initial setup guide for the Molekule Air Mini.

3. OPERATING INSTRUCTIONS

Fan Speeds:

The Molekule Air Mini offers five fan speeds to customize your purification needs. These can be adjusted directly on the device or via the mobile application.

- **Silent Mode:** Operates at 39 decibels for quiet purification.
- **Standard Modes:** Multiple settings for general use.
- **Boost Mode:** Provides maximum air purification.
- For home or commercial healthcare use, it is recommended to operate the Mini on fan speed 3 or higher.

App Control:

Manage your Molekule Air Mini conveniently from your smartphone. The dedicated app allows you to check filter status and change fan speeds from any location.



Whisper quiet & efficient

Air Mini uses low energy to keep fresh air flowing and at just 39 decibels, its low speed is quieter than your ideal roommate.

Figure 3.1: The Molekule mobile application for remote control and monitoring.

Path to clean air



Figure 3.2: The Molekule Air Mini is designed for quiet and efficient operation.

4. MAINTENANCE

Filter Replacement:

The Molekule Air Mini uses a PECO-Filter with a recommended lifespan of 6 months. The device features a status indicator to help you track when a replacement is needed. Only Molekule-branded filters are warranted for use with Molekule air purifiers.

Your browser does not support the video tag.

Video 4.1: Official guide on how to change the filter in your Molekule Air Mini.

Smart & connected

Molekule Air Mini is easy to control using its one-touch interface.

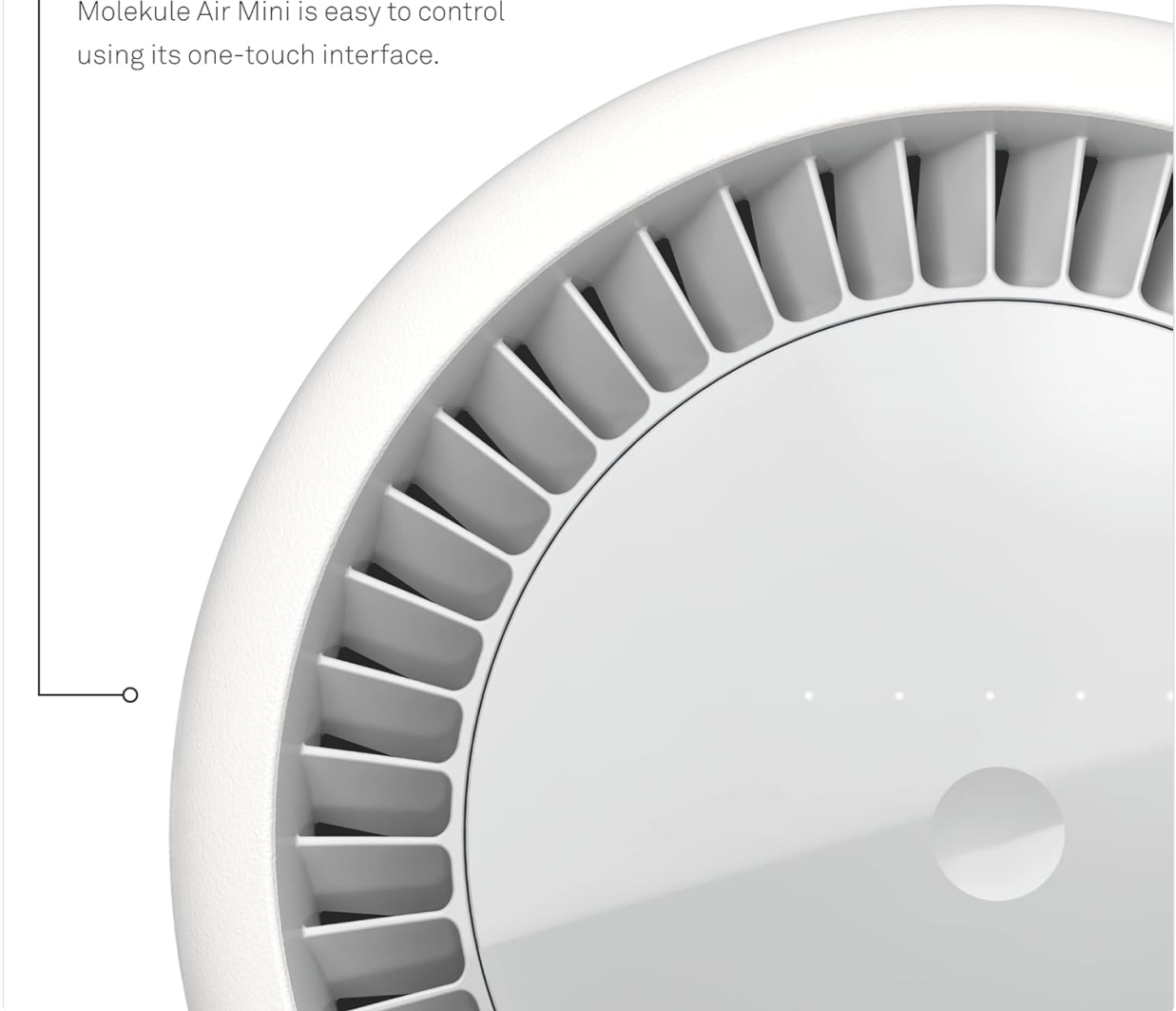


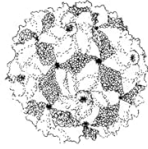
Figure 4.1: The PECO filter is easily accessible for replacement.

5. UNDERSTANDING PECO TECHNOLOGY

Molekule's patented Photo Electrochemical Oxidation (PECO) technology is designed to destroy airborne pollutants at a molecular level, rather than just capturing them. This process targets viruses, bacteria, allergens, and other harmful substances.

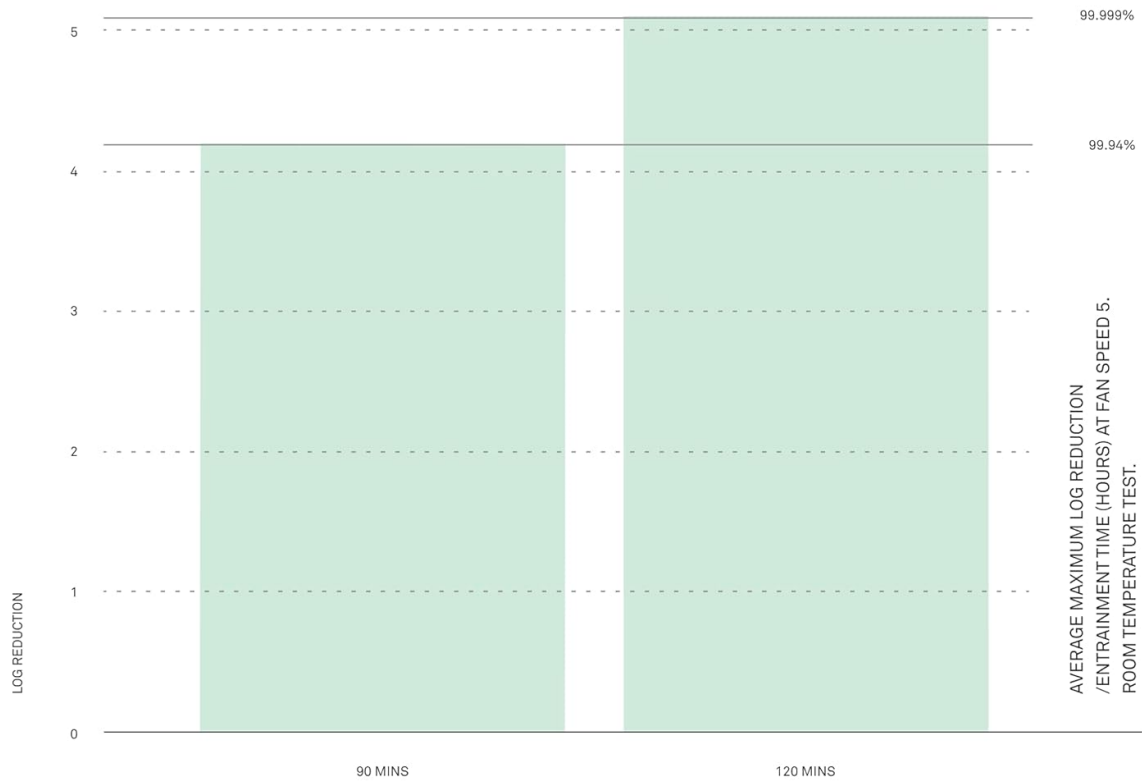
Your browser does not support the video tag.

Video 5.1: An animated explanation of how Molekule's PECO technology functions.



Over 99.999%
RNA virus MS2
removed in 2 hrs.*

Molekule Air Mini can help to remove airborne viruses like bacteriophage MS2, which travel in tiny aggregated droplets that can linger for hours before they settle on surfaces.



Tested at Aerosol Research and Engineering Laboratories in a 16 m³ chamber on MS2 Bacteriophage aerosolized droplets. *Pollutants were not re-released into the chamber after initial introduction. Device operated on the highest setting. Just note that no air purifier can prevent you from getting a virus.

Figure 5.1: The Path to Clean Air: A visual breakdown of the PECO purification process.

Molekule's PECO technology compared to conventional purifier technology

	MOLEKULE PECO <i>Designed to destroy</i>	HEPA & CARBON <i>HEPA is only designed to capture, not destroy. Carbon absorbs chemicals but does not destroy.</i>
Viruses	✓ Destroys	✗ Collects
Bacteria	✓ Destroys	✗ Collects
Particles	✓ Collects	✓ Collects

Figure 5.2: Comparison of Molekule's PECO technology with conventional purifier technologies.

6. TROUBLESHOOTING

Device Not Powering On:

If your Molekule Air Mini is not powering on, please follow these steps:

1. Unplug the device from the electrical outlet.
2. Place your finger on the center button located on the lid.
3. While keeping your finger on the button, plug the device back into the outlet and continue holding the button for 5 seconds.

7. TECHNICAL SPECIFICATIONS

Specification	Detail
Brand	Molekule
Model Number	MN1BX-US

Color	White
Product Dimensions	8.26"D x 8.26"W x 12"H
Item Weight	11.77 pounds
Noise Level	39 Decibels (Silent Mode)
Particle Retention Size	1 Micron
Controller Type	Android, iOS (App)
Wattage	55 watts (Highest speed)
Contaminant Filtration Capability	Odors, Pet Dander, Pollen, Viruses, Bacteria, Mold, Chemicals
Filter Class	PECO
Power Source	Corded Electric
Included Components	Molekule Air Mini Air Purifier, PECO Filter (recommended 6 month life)

8. WARRANTY AND SUPPORT

For warranty information and customer support, please refer to the official Molekule website or contact their customer service directly. Please note that only Molekule-branded filters are covered under warranty for use with Molekule air purifiers.