

## ZTHY BTY-M6K

# ZTHY BTY-M6K Laptop Battery Replacement Instruction Manual

Model: BTY-M6K

## 1. INTRODUCTION

This manual provides essential instructions for the safe and effective installation, operation, and maintenance of your ZTHY BTY-M6K laptop battery. This Li-polymer battery is designed as a replacement for various MSI laptop models, offering a voltage of 11.4V and a capacity of 4500mAh/52.4Wh/3Cell.

## 2. COMPATIBILITY AND IMPORTANT NOTES

The ZTHY BTY-M6K battery is compatible with the following part numbers and MSI laptop models:

### Compatible Part Numbers:

- BTY-M6K
- MS-17F2
- MS-17B7
- MS-16W1
- MS-16R1
- MS-16R4
- MS-17B4
- MS-17F3
- MS-17F4
- MS-17B3
- MS-17F1


### Compatible MSI Models:

- MSI GF63 Thin 8RB, 8RC, 8RD, 9SC, 9SCXR, 10SCSR, 10SCXR
- MSI GS63VR 7RG Stealth Pro
- MSI GF65 Thin 9SD, 9SE, 9SEX, 9SEXR, 10SD, 10SDR, 10SE, 10SER
- MSI GS73 8RF Stealth

- MSI GS73VR 7RG Stealth Pro
- MSI GF75 Thin 3RD, 8RC, 8RD, 8RX, 8SC, 9SC, 9SCX, 9SCSR, 9SD, 10SCS, 10SCXK, 10SCXR
- MSI WS63 8SK, 8SL Mobile Workstation
- MSI WP65 9TH
- MSI WF65 10TH, 10TJ
- MSI WF75 10TI, 10TJ
- MSI Bravo 15 A4DCR
- MSI Bravo 17 A4DDR

**Important Compatibility Note:**

The **BTY-M6K** battery is not compatible with the **BTY-M6J** battery. The **BTY-M6K** battery is specifically designed for **MSI Stealth Pro GS63VG 7RG** and is not compatible with other **MSI Stealth Pro GS63VG** series models. Always open your laptop's back cover to confirm the size and shape of your original battery before ordering.




# Need Attentions

The **BTY-M6K** battery is not compatible with the **BTY-M6J** battery. The **BTY-M6K** battery **only** fit for **MSI Stealth Pro GS63VG 7RG**. Not compatible with **OTHER MSI Stealth Pro GS63VG** series. We recommend that you open the back cover of your laptop to confirm the size and shape of your original battery before placing an order.

**Model : BTY-M6K**  
**Voltage : 11.4V**  
**Capacity : 52.4Wh**


W 3.86 inch



W 3.15 inch

**Model : BTY-M6J**  
**Voltage : 11.4V**  
**Capacity : 64.98Wh**

W 4.33 inch



W 3.94 inch

Image: Comparison of BTY-M6K and BTY-M6J batteries, highlighting their distinct physical characteristics and incompatibility.

**How to Check Your Laptop Model:**

1. Press the **Windows key + R** to open the Run dialog.
2. Type **msinfo32** and click **OK**.

3. In the System Information window, locate **System Model** to identify your laptop's specific model.



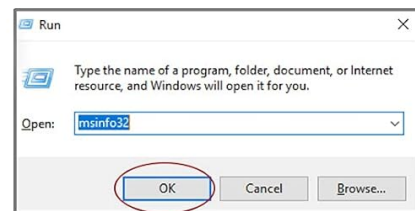
## How to check your laptop model



1) press Windows + R



2) type "msinfo32" then click OK



3) find "System Model" in the pop-up window

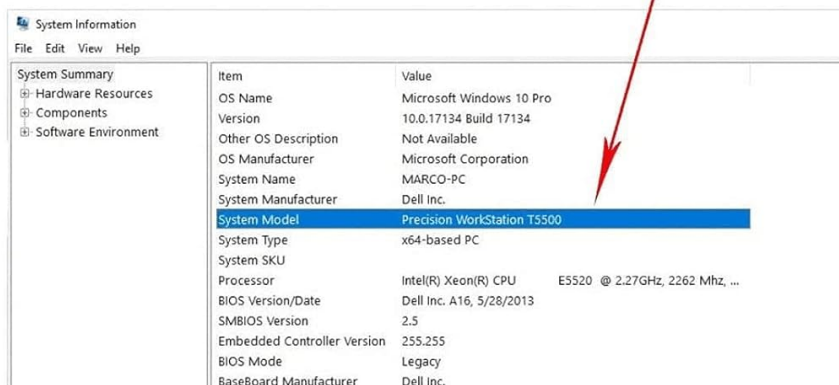


Image: Visual guide demonstrating how to access System Information and find your laptop's model number.

### 3. SAFETY INFORMATION

Your ZTHY BTY-M6K battery is certified by CE and UL for safety, adhering to strict guidelines for compatibility and environmental standards. Please observe the following safety precautions:

- Do not disassemble, crush, or puncture the battery.
- Do not dispose of the battery in fire or water.
- Prevent the battery from exposure to extreme temperatures or moisture.
- Ensure proper ventilation around your laptop during use and charging.



Entire  
Protect



Premium  
Microchip



Overheat  
Protection



Over  
Charge

Image: Icons representing the safety features of the battery, including protection against overcharge, overheating, and overall circuit protection.

#### 4. SETUP (INSTALLATION)

Follow these steps carefully to install your new battery. If you are unsure, consult a professional or search for video tutorials specific to your laptop model on platforms like YouTube.

1. **Power Off and Disconnect:** Completely turn off your laptop and disconnect the AC power adapter.
2. **Access Battery Compartment:** Carefully open the back cover of your laptop. This may require specific tools and knowledge of your laptop's design.
3. **Disconnect Old Battery:** Locate the old battery. Disconnect its cable from the motherboard to prevent any damage during removal.
4. **Remove Old Battery:** Unscrew the fasteners holding the old battery in place. Keep track of all screws.
5. **Install New Battery:** Carefully place the new ZTHY BTY-M6K battery into the battery case. Secure it with the screws you removed earlier.
6. **Connect New Battery:** Connect the new battery's cable securely to the motherboard interface. Ensure a firm connection.
7. **Reassemble Laptop:** Replace the laptop's back cover and secure it.



Gold-plated connector points to ensure current transport excellently and serve stably.

Image: Detailed view of the battery's gold-plated connector points, designed for stable current transport.

## 5. OPERATING (FIRST USE AND CHARGING)

For optimal performance and longevity, follow these guidelines for initial use and charging:

1. **Initial Cycle:** Upon first installation, discharge the new battery to 10-20% (do not let it reach 0%). Then, fully charge it to 95%. Repeat this discharge/charge cycle 3-4 times to 'wake up' the new battery and calibrate its capacity.
2. **Avoid Prolonged Connection:** Do not keep the AC adapter connected for extended periods after the battery is fully charged, as this can potentially reduce battery lifespan.

## 6. MAINTENANCE (BATTERY CARE)

Proper maintenance can significantly extend your battery's life:

- **Power Plan Optimization:** Adjust your laptop's power plan settings to 'Power Saver'. In advanced power settings, reduce the processor state to 20% when on battery power.
- **Keep Clean:** Regularly clean your laptop to prevent dust accumulation in vents, which can lead to overheating and affect battery performance.
- **Disable Unused Features:** Turn off Wi-Fi, Bluetooth, and other unnecessary features when not in use to conserve battery power.

- **Storage:** If storing the battery separately for a long time, ensure it is charged to over 80% at least once a month.

## 7. TROUBLESHOOTING

If you encounter issues with your new battery, try the following troubleshooting steps:

### Battery Not Recognized:

- **Re-installation:** Turn off the laptop, disconnect AC power, remove the battery, and then re-install it, ensuring the battery cable is fully and tightly connected to the motherboard interface.
- **Check Conductive Material:** Verify that the conductive contacts on both the laptop motherboard and the battery are clean and undamaged. You can compare with your original battery if available.
- **Update Drivers:** Check if the battery driver is in normal condition. If not, download and update the corresponding driver software from your laptop manufacturer's website.

### General Battery Issues (Power Cycle):

1. Turn off the laptop.
2. Unplug the AC power adapter.
3. Remove the battery.
4. Reconnect the AC power adapter.
5. Turn on the laptop and allow the operating system to boot completely.
6. Once logged in, perform a normal shutdown.
7. Unplug the AC power adapter.
8. Reinsert the battery.
9. Reconnect the AC power adapter and power on the laptop.

## 8. SPECIFICATIONS

<b>Model Number</b>	BTY-M6K
<b>Battery Type</b>	Li-polymer
<b>Battery Cell Composition</b>	Lithium Ion
<b>Voltage</b>	11.4 Volts
<b>Capacity</b>	4500mAh / 52.4Wh
<b>Number of Cells</b>	3 Cell
<b>Color</b>	Black
<b>Item Dimensions (L x W x H)</b>	8.66 x 4.33 x 0.24 inches
<b>Item Weight</b>	300 Grams
<b>Reusability</b>	Rechargeable
<b>Manufacturer</b>	Shenzhen Iselection source electronic technology co., LTD

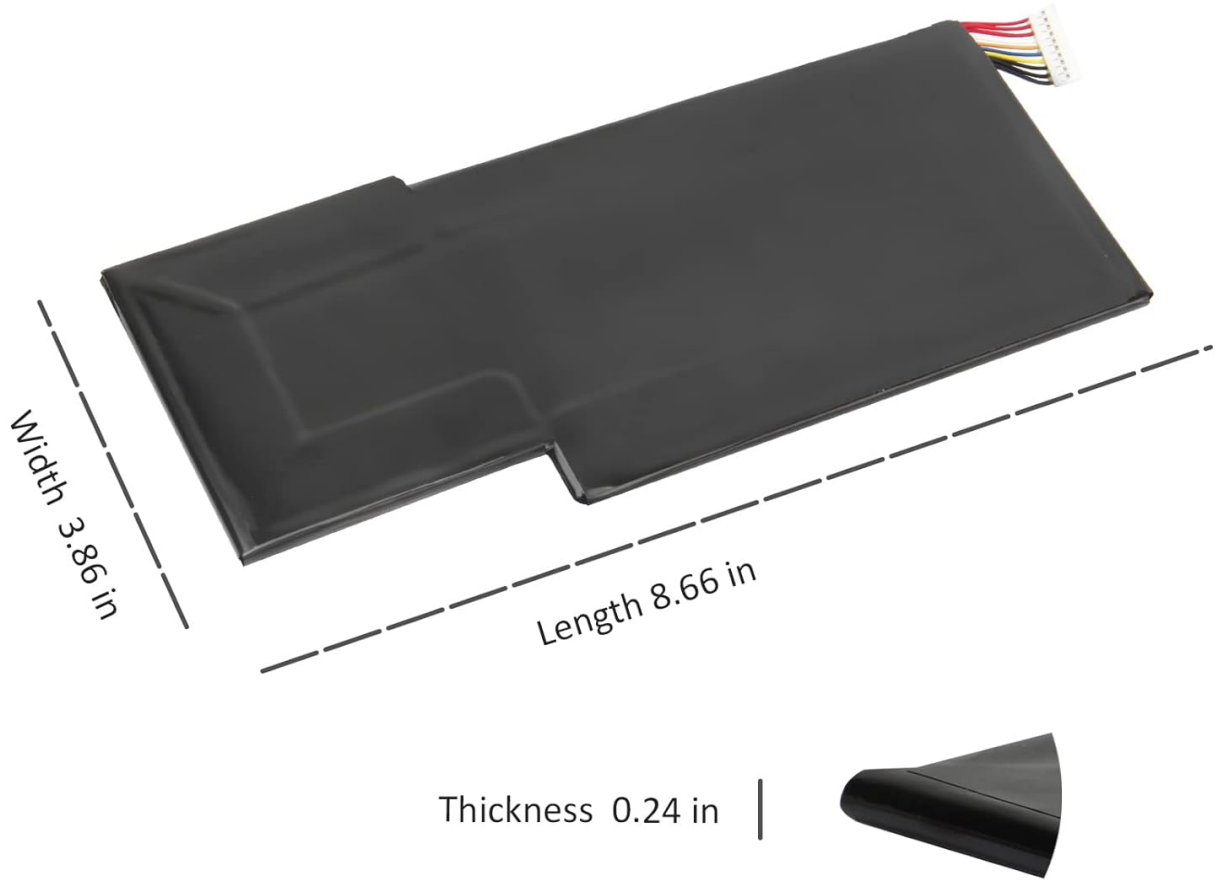


Image: Dimensional drawing of the BTY-M6K battery, indicating its length, width, and thickness.



Model: BTY-M6K

Capacity: 52.4Wh

Voltage: 11.4V

Battery Type: Li-Polymer



Image: Product label displaying key specifications such as model number, voltage, and capacity.

## 9. WARRANTY AND SUPPORT

ZTHY is committed to providing quality products and customer satisfaction. Please refer to the following information regarding warranty and support:

### Return and Replacement Policy:

- **30-Day Return:** We offer a no-questions-asked return policy within 30 days of purchase.
- **12-Month Replacement:** If the product fails within 12 months from the date of purchase, we will replace it with a new one.

### Contact Support:

For any issues or inquiries, please contact ZTHY TECH directly. We are responsible for every product sold. You can find seller contact information on the product's Amazon page or by visiting the [ZTHY TECH Seller Profile](#).