

Sunrich LNL001-189

Sunrich UV Gel Nail Lamp 120W LED Nail Light User Manual

Model: LNL001-189

Brand: Sunrich

INTRODUCTION

Welcome to your new Sunrich UV Gel Nail Lamp. This manual provides detailed instructions for the safe and effective use of your device. This 120W LED nail light is designed for fast and efficient curing of all types of nail gels, offering a professional salon experience at home.

KEY FEATURES

- **Upgraded Dual Light Source & Fast Curing Nail:** Advanced LED double light source bulb technology cures all kinds of nail gels. A powerful 120 watts offers 80% faster curing speeds than lower wattage UV nail lamps.
- **4 Timers & Infrared Sensor:** Provides 10S / 30S / 60S / 120S flexible drying options displayed on a large LCD screen. Smart sensor activates the lamp when hands/feet are inserted and turns off when removed.
- **Portable Handle & Well Made:** Classic white and black design with a handle for easy portability. Detachable base for convenient toenail gel curing and cleaning. Large internal space accommodates hands or feet comfortably.

SETUP

Follow these steps to set up your nail lamp:

1. Unpack the nail lamp and all accessories from the box.
2. Place the lamp on a stable, flat surface.
3. Connect the power adapter to the DC input port on the back of the lamp.
4. Plug the power adapter into a suitable electrical outlet. The LCD display will illuminate, indicating the lamp is ready for use.



Figure 1: The Sunrich UV Gel Nail Lamp connected to its power adapter, ready for operation.

OPERATION

Your Sunrich UV Gel Nail Lamp features multiple timer settings and an automatic sensor for ease of use.

Timer Settings

Select your desired curing time using the buttons on the top of the lamp:

- **10S:** For quick flash cures or thin gel layers.
- **30S:** Standard curing time for most gel polishes.
- **60S:** For thicker gel layers or darker colors.
- **120S (Low Heat Mode):** For sensitive nails or builder gels, gradually increasing power to reduce heat spikes.



Figure 2: The control panel showing the timer buttons and digital display.

Automatic Sensor

The lamp is equipped with an infrared sensor. Simply place your hand or foot into the lamp, and it will automatically turn on. Remove your hand or foot, and the lamp will turn off. If a timer setting is selected, the countdown will begin automatically upon insertion.

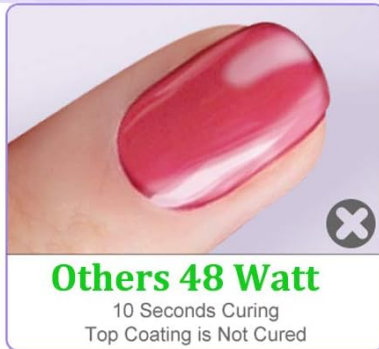
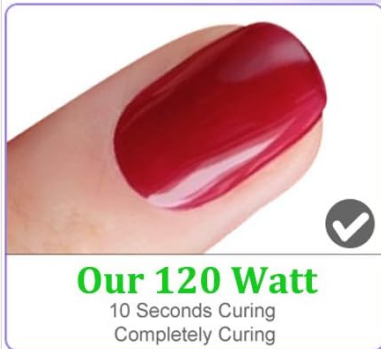


Figure 3: Demonstrating the automatic sensor feature with a hand inside the lamp.

Detachable Base

The magnetic bottom plate can be easily detached for curing toenails or for cleaning the interior of the lamp.



Figure 4: The detachable base allows for versatile use and easy cleaning.

MAINTENANCE AND CARE

Proper maintenance ensures the longevity and optimal performance of your nail lamp.

- Always unplug the lamp before cleaning.
- Use a soft, dry cloth to wipe the exterior.
- To clean the interior, detach the base and gently wipe the reflective surfaces and LED beads.
- **Important:** Do not use acidic liquids or harsh chemicals to clean the lamp, as this may damage the components and lead to malfunction.
- Store the lamp in a cool, dry place away from direct sunlight when not in use.

TROUBLESHOOTING

If you encounter any issues with your Sunrich UV Gel Nail Lamp, please refer to the following common solutions:

Problem	Possible Cause	Solution
---------	----------------	----------

Problem	Possible Cause	Solution
Lamp not turning on	Power adapter not connected properly	Ensure the power adapter is securely plugged into both the lamp and the electrical outlet.
Lamp not turning on	Faulty power outlet	Try plugging the lamp into a different working electrical outlet.
Gels not curing properly	Incorrect curing time selected	Ensure you are using the appropriate timer setting for your specific gel polish type. Thicker layers or darker colors may require longer curing times.
Gels not curing properly	Gel applied too thick	Apply gel polish in thin, even coats. Cure each coat separately.
Automatic sensor not working	Obstruction or improper hand placement	Ensure your hand or foot is fully inserted into the lamp and not obstructing the sensor.
Lamp overheating	Prolonged continuous use	Allow the lamp to cool down between extended uses. The lamp has heat dissipation holes to prevent overheating during normal operation.

If the issue persists, please contact customer support.

SPECIFICATIONS

Feature	Detail
Brand	Sunrich
Model Number	LNL001-189
Wattage	120 watts
Product Dimensions	9.6"D x 8.5"W x 4.8"H
Item Weight	1.5 Pounds
Light Source Type	Infrared, LED
Number of Light Sources	45
Control Method	Touch
Power Source	Corded Electric
Color	White
Material	Plastic
Voltage	24 Volts (DC)

WARRANTY AND SUPPORT

Warranty

This Sunrich UV Gel Nail Lamp comes with a 24-month warranty from the date of purchase, covering manufacturing defects. Please retain your proof of purchase.

Customer Support

Your satisfaction is our priority. If you have any questions, concerns, or require assistance, please do not hesitate to contact us:

- Visit our storefront on Amazon and click "Ask a Question".

We aim to respond to all inquiries within 24 hours.