

Twelve South 12-1914

Twelve South AirFly Duo Bluetooth 5.0 Transmitter Instruction Manual

Model: 12-1914 | Brand: Twelve South

1. INTRODUCTION

The Twelve South AirFly Duo is a versatile Bluetooth 5.0 transmitter designed to wirelessly connect your AirPods, earbuds, or any wireless headphones to devices equipped with a 3.5mm audio jack. This allows for a seamless audio experience with in-flight entertainment systems, gym equipment, gaming devices, and more, eliminating the need for wired connections.

What's in the Box

- AirFly Duo Bluetooth Transmitter
- USB-C Charging Cable
- Travel Pouch
- Quick Start Guide

Unlike other products which have a fixed prong or foldable prongs, Airfly won't fall out if bumped.

The long bendable cable can work where the port is in an uneven surface or hard to reach location.

Flexible cable ensures that AirFly can work in any situation.



The AirFly Duo package includes the transmitter, a USB-C charging cable, and a convenient travel pouch for portability.

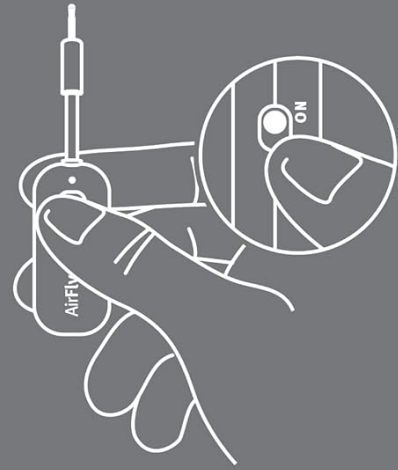
2. SETUP AND PAIRING

Follow these steps to set up and pair your AirFly Duo with your wireless headphones:

1. **Turn on AirFly Duo:** Slide the ON/OFF switch on the side of the AirFly Duo to the ON position. The AirFly Duo will flash white and amber to indicate it's in pairing mode.
2. **Put Headphones in Pairing Mode:** Place your wireless headphones (e.g., AirPods) into pairing mode. For AirPods, open the charging case with the AirPods inside and press and hold the button on the back of the case until the status light flashes.
3. **Connect:** Once the light on AirFly Duo turns solid white, your headphones are connected. Plug the AirFly Duo into the 3.5mm headphone jack of your desired audio source.
4. **Connect a Second Pair of Headphones (Optional):** To pair a second set of headphones, repeat steps 1 and 2, then press the second pairing button on the AirFly Duo.

1 Put AirFly Duo in Pairing Mode

Switch AirFly Duo on, then press and hold Button 1 for four seconds until AirFly Duo rapidly blinks white and amber.

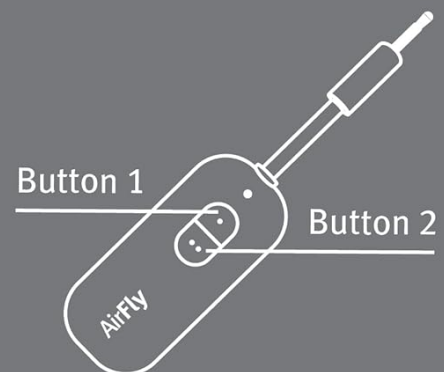


2 Put Headphones in Pairing Mode

Please refer to your owner's manual. Once light on AirFly Duo turns solid white, you are connected. Plug AirFly Duo into the headphone jack.

3 Connect another pair of Headphones

To pair a second set of headphones, repeat the steps above using button 2.



Visual guide for pairing your wireless headphones with the AirFly Duo.

Setup Demonstration Videos

Your browser does not support the video tag.

This video demonstrates the AirFly Duo, its components, and how to store it in its pouch. It also highlights its use for audio sharing.

Your browser does not support the video tag.

A review of the AirFly Bluetooth Adapter, showcasing its features and demonstrating the pairing process with headphones.

3. OPERATING THE AIRFLY DUO

The AirFly Duo allows you to enjoy audio wirelessly from any device with a 3.5mm audio jack. Its compact design and flexible cable ensure compatibility with various setups.

Key Features and Usage Scenarios

- **Wireless Freedom:** Connect your wireless headphones to in-flight entertainment, gym equipment, gaming

devices, TVs, or any device with a 3.5mm audio jack.

- **Dual Headphone Support:** Share audio with a friend or partner by connecting two pairs of wireless headphones simultaneously.
- **Superior Sound Quality:** Equipped with Bluetooth 5.0 and aptX Low Latency codecs for high-quality audio with minimal delay.
- **Long-Range Connectivity:** Enjoy audio up to 10 meters (33 feet) away from the source device.

AirFly Duo



hours of battery life
w/ USB-C Charging



of AirPods or
Wireless Headphones



Headphone Out



Air Travel



Gym



Gaming

Overview of AirFly Duo's capabilities and compatible environments.

Two can watch movies and shows cord-free
using the audio jack of any tablet



The AirFly Duo enables two people to enjoy audio from a single source simultaneously.



Enjoy in-flight entertainment wirelessly with your preferred headphones.



The AirFly Duo provides wireless audio for gym equipment, enhancing your workout experience.

Usage Demonstration Videos

Your browser does not support the video tag.

This video highlights the AirFly Duo as a travel essential, demonstrating its use with in-flight entertainment to connect wireless headphones.

Your browser does not support the video tag.

A demonstration of the AirFly Duo, emphasizing its convenience for using wireless headphones with in-flight entertainment.

Your browser does not support the video tag.

A short video showcasing the AirFly Duo as a favorite travel accessory for airplanes, enabling wireless audio.

Your browser does not support the video tag.

This video presents the AirFly Duo as an Amazon travel favorite, illustrating its ease of use for wireless audio on the go.

4. MAINTENANCE AND CHARGING

To ensure optimal performance and longevity of your AirFly Duo, follow these maintenance guidelines:

- **Charging:** The AirFly Duo features a USB-C charging port. Use the provided USB-C cable to charge the device. It can be used while charging.
- **Battery Life:** Enjoy over 20 hours of uninterrupted audio on a single charge.
- **Cleaning:** Wipe the device with a soft, dry cloth. Avoid using harsh chemicals or abrasive materials.
- **Storage:** Store the AirFly Duo in its travel pouch when not in use to protect it from dust and damage.



The AirFly Duo charges via a standard USB-C port.

5. TROUBLESHOOTING

If you encounter issues with your AirFly Duo, consider the following:

- **Audio Quality Issues:** If you experience anything less than high-quality audio, first check the audio source. Ensure your device supports Bluetooth 5.0 and aptX Low Latency codecs for optimal performance.
- **Connection Drops:** If the connection is lost, try turning the AirFly Duo off and then back on to re-establish the connection. Re-pairing your headphones may also resolve the issue.
- **Pairing Difficulties:** Ensure both the AirFly Duo and your headphones are in pairing mode. Refer to your headphone's manual for specific pairing instructions.
- **No Power:** Ensure the AirFly Duo is fully charged. Connect it to a power source using the USB-C cable.

6. SPECIFICATIONS

Feature	Detail
Product Dimensions	2.24 x 1 x 0.43 inches
Item Weight	0.64 ounces
Item Model Number	12-1914
Batteries	1 Lithium Polymer batteries required (included)
Wireless Communication Technologies	Bluetooth
Connectivity Technologies	Bluetooth
Special Features	Pairs up to two headphones
Human Interface Input	Buttons
Color	White
Manufacturer	Twelve South
Power Source	Battery Powered
Material	Plastic

7. SAFETY INFORMATION


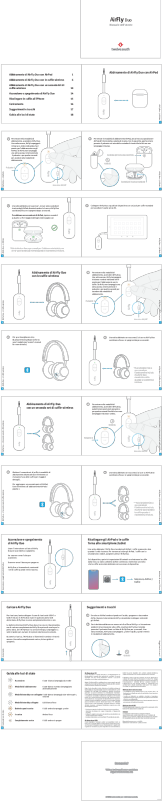
Keep Away from Small Children & Pets.

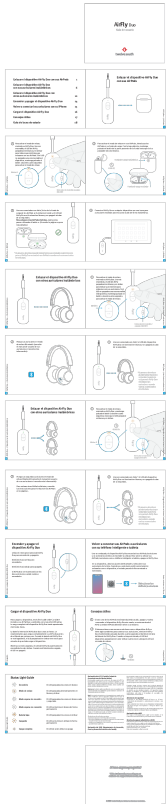
8. SUPPORT

For further assistance, warranty information, or customer service options, please visit the official Twelve South support website:

support.twelvesouth.com

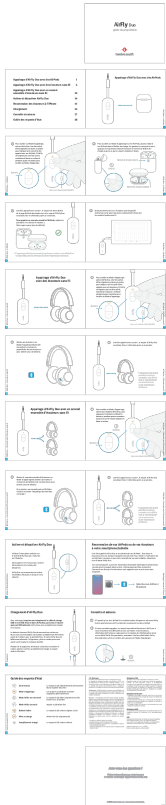
Related Documents - 12-1914

	<p>Twelve South AirFly Duo Owner's Guide: Connect Wireless Headphones to Any Audio Source</p> <p>Comprehensive owner's guide for the Twelve South AirFly Duo, detailing how to pair AirPods and wireless headphones, turn the device on/off, charge it, and understand status lights. Learn to connect your wireless audio devices to any source with a 3.5mm jack.</p>
	<p>Twelve South AirFly Duo User Manual: Bluetooth Transmitter for Wireless Headphones and AirPods</p> <p>Comprehensive user manual for the Twelve South AirFly Duo, a Bluetooth transmitter that connects wireless headphones and AirPods to any audio jack. Learn about pairing, charging, troubleshooting, and status lights.</p>



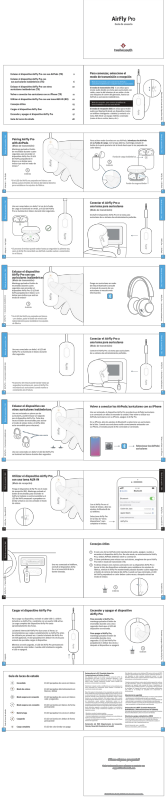

[AirFly Duo User Guide: Connect Wireless Headphones to Any Audio Jack](#)

Comprehensive user guide for the Twelve South AirFly Duo, explaining how to pair AirPods and other wireless earbuds, charge the device, and troubleshoot connection issues for seamless wireless audio.



[Twelve South AirFly Duo: Wireless Audio Transmitter User Guide](#)

Comprehensive user guide for the Twelve South AirFly Duo, explaining how to pair AirPods and wireless earbuds, activate/deactivate the device, charge it, and troubleshoot common issues. Learn about status LED indicators and regulatory compliance.

	<p>Guía de usuario AirFly Pro para transmisión de audio inalámbrica</p> <p>Conecte sus AirPods o auriculares inalámbricos a fuentes de audio con cable como televisores de avión o equipos de gimnasio, o utilice el AirFly Pro como receptor Bluetooth para sistemas estéreo de coche o barco.</p>
	<p>Twelve South AirFly SE User Manual: Connect Wireless Headphones & AirPods</p> <p>Comprehensive user guide for the Twelve South AirFly SE Bluetooth audio adapter. Learn how to pair AirPods, wireless headphones, control volume, check battery, and troubleshoot.</p>