

[Manuals.plus](#) /

> [VITCOCO](#) /

> VITCOCO Otoscope Ear Camera 5MP HD (Model otoskop-HB21185) User Manual

VITCOCO otoskop-HB21185

VITCOCO Otoscope Ear Camera 5MP HD

Model: otoskop-HB21185

INTRODUCTION

Thank you for choosing the VITCOCO Otoscope Ear Camera. This device is designed to provide a clear, high-definition view of your ear canal, assisting in safe and effective ear inspection and cleaning. Please read this manual thoroughly before use to ensure proper operation and maintenance.

IMPORTANT SAFETY INFORMATION

- **Consult a professional:** If you experience ear pain, discomfort, or have a history of ear conditions, consult a medical professional before using this device.
- **Gentle use:** Always insert the otoscope gently into the ear canal. Avoid pushing too deep to prevent injury to the eardrum or ear canal.
- **Children:** Do not use this device on infants or uncooperative children. Adult supervision is required for children and individuals with limited physical, sensory, or mental capabilities.
- **Cleaning:** Clean the ear spoon and lens thoroughly before and after each use to prevent infection.
- **Damage:** Do not use the device if the lens or any part of the otoscope is damaged.
- **Temperature:** Avoid using the device in extreme temperatures.

PACKAGE CONTENTS

Please check the package to ensure all items are present:

- VITCOCO Otoscope Ear Camera
- Ear Spoons (various types)
- USB Charging Cable
- User Manual
- Protective Caps/Adapters



Image: All components included in the VITCOCO Otoscope Ear Camera package, including the otoscope, various ear spoons, charging cable, and protective caps.

PRODUCT OVERVIEW

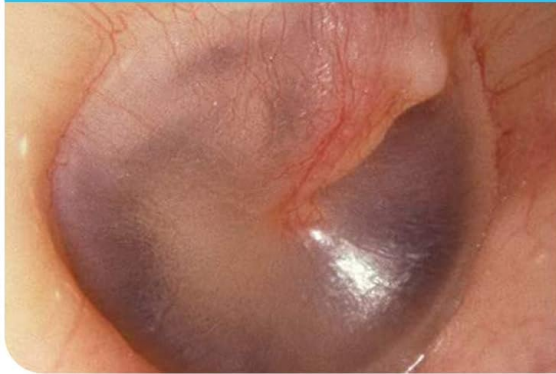
The VITCOCO Otoscope Ear Camera features advanced technology for clear and safe ear examination.

- **5 Megapixel HD Camera:** Provides high-resolution images and videos of the ear canal.
- **3.0mm Small Lens:** Designed for safe and comfortable insertion into most ear canals.
- **6 LED Lights:** Ensures bright and clear illumination for optimal viewing.
- **IP67 Waterproof Lens:** Allows for easy cleaning and sterilization of the camera tip.
- **Smart Pop-up Design:** Integrated storage for ear spoons within the device for convenience.

Built-in 5 megapixel 1920P HD lens

with 6 LED lights provide clear images and video

Our HD1920P 🏆



Other 720P 🗨️



Image: Visual comparison demonstrating the superior clarity of the 5 Megapixel 1920P HD lens compared to a standard 720P lens, showing detailed views of the eardrum.

3.0mm Small Lens



Image: Diagram illustrating the smaller 3.0mm lens size for safer and more comfortable insertion into the ear canal, contrasting it with a larger 5.0mm lens.



Image: The smart pop-up design of the otoscope, revealing six ear spoons stored conveniently within the device handle.

SETUP GUIDE

1. **Charge the Device:** Before first use, fully charge the otoscope using the provided USB cable. The charging indicator will show the charging status.
2. **Download the App:** Search for the official VITCOCO otoscope app on the App Store (for iPhone) or Google Play Store (for Android). Install the app on your smartphone or tablet.
3. **Power On:** Press and hold the power button on the otoscope to turn it on. The LED lights on the camera tip should illuminate.
4. **Connect to Wi-Fi:** Go to your device's Wi-Fi settings. Find and connect to the Wi-Fi network broadcast by the otoscope (usually named "VITCOCO_XXXX" or similar). No password is typically required.
5. **Open the App:** Launch the VITCOCO app. The live view from the otoscope camera should appear on your screen.
6. **Attach Ear Spoon:** Select an appropriate ear spoon from the integrated storage or accessories.

Gently attach it to the tip of the otoscope. Ensure it is securely fastened.

OPERATING INSTRUCTIONS

1. **Prepare for Use:** Ensure the otoscope is charged, connected to your device via Wi-Fi, and the app is displaying a live feed. Attach a clean ear spoon.
2. **Positioning:** Hold the otoscope firmly. Gently pull your earlobe slightly upwards and backwards to straighten the ear canal.
3. **Insert Gently:** Slowly and carefully insert the otoscope tip into your ear canal while observing the live feed on your screen. Do not force the device.
4. **Inspect and Clean:** Use the live view to navigate the ear canal. If removing earwax, use the attached ear spoon with extreme caution and gentle movements. Only remove visible and easily accessible earwax. Avoid touching the eardrum.
5. **Capture Images/Videos:** Use the app's functions to take photos or record videos of your ear canal for later review or to share with a medical professional.
6. **Remove Device:** After inspection or cleaning, gently withdraw the otoscope from your ear.
7. **Power Off:** Press and hold the power button to turn off the otoscope.



Image: Instructions on how to access the ear spoons from the integrated storage and how to properly remove the otoscope from its protective casing.



5 Megapixels HD Camera

Image: A user demonstrating the use of the VITCOCO otoscope, with the live 5 Megapixel HD camera feed displayed on a connected smartphone, showing the inside of the ear.

MAINTENANCE AND CARE

- **Clean the Lens:** The otoscope lens is IP67 waterproof. After each use, gently wipe the lens with an alcohol swab or rinse it under running water. Ensure it is completely dry before storage.
- **Clean Ear Spoons:** Detach and clean ear spoons with soap and water or an alcohol solution after each use. Sterilize if necessary.
- **Storage:** Store the otoscope and its accessories in a clean, dry place, away from direct sunlight and extreme temperatures.
- **Charging:** Recharge the device when the battery is low to ensure it's ready for next use. Avoid overcharging for extended periods.



Image: The IP67 waterproof lens of the VITCOCO otoscope being cleaned under running water, demonstrating its resistance to liquids.

TROUBLESHOOTING

Problem	Possible Cause	Solution
No image on screen	Device not powered on, Wi-Fi not connected, low battery, app not open.	Ensure device is charged and powered on. Check Wi-Fi connection in phone settings. Open the VITCOCO app.
Image is blurry/unclear	Lens is dirty, insufficient light, device too far/close to ear canal.	Clean the lens carefully. Adjust the position of the otoscope for optimal focus.
Cannot connect to Wi-Fi	Otoscope not powered on, Wi-Fi signal interference, incorrect network selected.	Ensure otoscope is on. Move closer to the device. Verify you are selecting the correct VITCOCO Wi-Fi network. Restart both the otoscope and your phone.

Problem	Possible Cause	Solution
Device not charging	Faulty cable, power adapter issue, charging port obstruction.	Try a different USB cable and power adapter. Check the charging port for debris.

SPECIFICATIONS

- **Model:** otoskop-HB21185
- **Manufacturer:** VITCOCO
- **Camera Resolution:** 5 Megapixel (1920P HD)
- **Lens Diameter:** 3.0 mm
- **LED Lights:** 6
- **Waterproof Rating:** IP67 (lens only)
- **Connectivity:** Wi-Fi (for iPhone and Android)
- **Package Dimensions:** 19.3 x 8.6 x 5.2 cm
- **Weight:** 300 g
- **First Available Date:** October 11, 2019

WARRANTY AND SUPPORT

For warranty information and technical support, please refer to the contact details provided with your product packaging or visit the official VITCOCO website. Keep your purchase receipt as proof of purchase for any warranty claims.