



[Manuals.plus](#) /

> [Molekule](#) /

> Molekule Air Large Room Air Purifier (Model MH1-BBB-1) Instruction Manual

## Molekule MH1-BBB-1

# Molekule Air Large Room Air Purifier (Model MH1-BBB-1) Instruction Manual

## WELCOME TO CLEAN AIR

---

The Molekule Air Large Room Air Purifier utilizes advanced PECO technology to destroy a wide range of airborne pollutants, providing cleaner air for your home or business. This manual provides essential information for setup, operation, and maintenance of your device.



*A tall, cylindrical silver air purifier with a light brown leather handle, standing on a wooden floor.*

## **UNDERSTANDING YOUR MOLEKULE AIR PURIFIER**

---

### **Photo Electrochemical Oxidation (PECO) Technology**

Unlike traditional filters that merely capture pollutants, Molekule's patented PECO technology uses light-activated nanotechnology to destroy viruses, volatile organic compounds (VOCs), allergens, bacteria, and mold at a molecular level.

Your browser does not support the video tag.

*Official Molekule video explaining how the PECO technology works to purify air.*

## Path to clean air

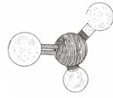


*A cutaway diagram of the Molekule Air Purifier, illustrating the 360-degree air intake, particle capture, PECO process, and clean air output.*

# Molekule destroys the widest range of pollutants compared to conventional purifiers.



Cockroach allergens  
trash cans, cabinets



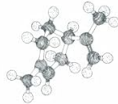
Tobacco smoke  
(Formaldehyde)



Pollen  
windows, doors, carpets



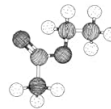
Varnish off-gassing  
(Acetone)



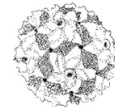
Citrus-scented cleaners  
(D-Limonene)



Pet dander  
carpets, floors



Nail polish remover  
(Ethyl acetate)



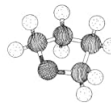
RNA viruses  
throughout nature



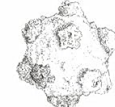
Paint fumes  
(Toluene)



Black mold  
inside pillows



Burnt food smell  
(Furan)



DNA viruses  
throughout nature



Exhaust fumes  
(Benzene)



Dust mite allergens  
mattresses, blankets

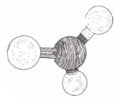


Bacterial spores  
spoiled food, bathrooms



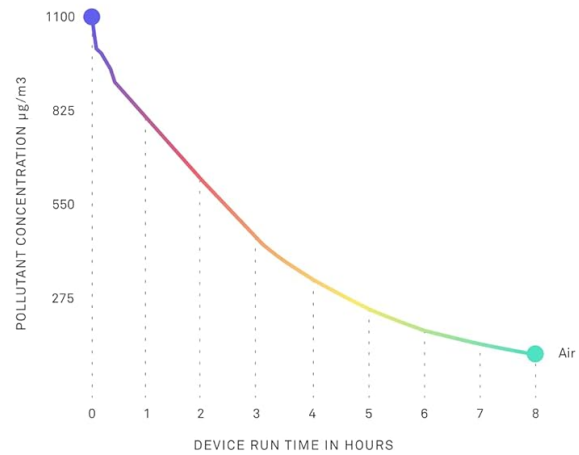
and much more

*A graphic depicting various airborne pollutants like viruses, bacteria, mold, and allergens, indicating their destruction by Molekule's PECO technology.*



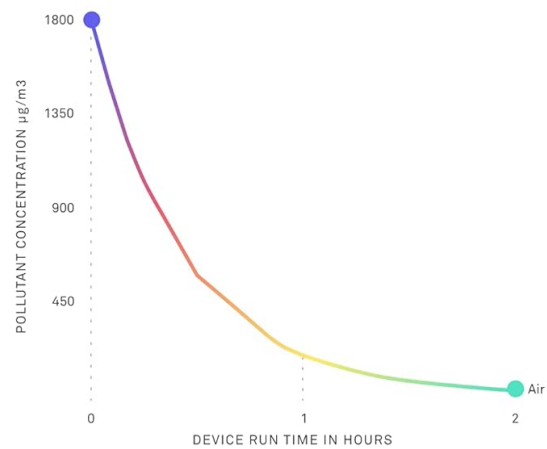
## 90% formaldehyde removed in 8 hrs.\*

Molekule Air destroys toxic volatile organic compounds like formaldehyde, which is a stable substance that is difficult to remove from indoor air. It can enter your home as part of industrially manufactured products like furniture, flooring, or clothes, and is a significant portion of cigarette smoke.



## Over 99% D-limonene removed in 2 hrs.\*

Unpleasant natural and artificial smells in the air can be caused by chemicals such as limonene. Lemon-scented cleaning products commonly contain limonene. Molekule Air can destroy VOCs like D-limonene.



Tested per GB/T 18801-2015 Protocol in a 30 m³ chamber at Intertek-Grand Rapids.  
\*Pollutants were not re-released into the chamber after initial introduction. Device operated on highest setting.

*A graph illustrating the reduction of formaldehyde concentration over time by the Molekule Air Purifier.*

# Molekule's PECO technology compared to conventional purifier technology

	MOLEKULE PECO <i>Designed to destroy</i>		HEPA & CARBON <i>HEPA is only designed to capture, not destroy. Carbon absorbs chemicals but does not destroy.</i>	
Viruses	✓	Destroys	✗	Collects some
Allergens	✓	Destroys	✗	Collects some
Mold	✓	Destroys	✗	Collects some
Bacteria	✓	Destroys	✗	Collects some
Chemicals	✓	Destroys	✗	Collects some
Ozone	✓	Destroys	✗	Collects some
Particles	✓	Collects	✓	Collects

*A table comparing the effectiveness of Molekule's PECO technology against traditional HEPA and carbon filters in destroying or collecting various pollutants.*

## Large Room Coverage

Designed to effectively purify air in large rooms up to 600 square feet, such as living rooms, family rooms, and large bedrooms.

## Captures smoke & destroys viruses

PECO-Filter technology inside  
Air destroys pollutants while  
trapping harmful particles.



*A Molekule Air Purifier positioned next to a chair in a bright living room, demonstrating its aesthetic integration into a home environment.*

### **Intuitive Control and Connectivity**

The device features an easy-to-use touch-screen interface for direct control. For added convenience, connect your Molekule Air Purifier to your Wi-Fi network and manage it remotely using the dedicated iPhone or Android application.

## Air control

See filter status or select fan speed right from your phone.



A smartphone screen showing the Molekule app interface with options to control the air purifier, next to the actual device.

## Touch of freshness

The touchscreen lets you select fan speeds, modes, and see filter status.



*A close-up view of the purifier's top touchscreen, showing filter status and fan speed selection.*

### **Portable Design**

Equipped with a natural leather handle, the Molekule Air Purifier can be easily moved and placed wherever clean air is needed most in your home or office.



## Thoughtful design

With its vegan leather handle, Molekule Air is easy to carry, because allergens don't just pick one room.

*A detailed view of the purifier's vegan leather handle, emphasizing its thoughtful design for portability.*

## INITIAL SETUP

---

1. **Unpacking:** Carefully remove the Molekule Air Purifier from its packaging. Ensure all components, including the PECO filter and pre-filter, are present.
2. **Placement:** Place the purifier on a flat, stable surface in the desired room. Ensure there is adequate space around the unit for optimal airflow.
3. **Power Connection:** Plug the power cord into a grounded electrical outlet.
4. **Filter Installation:**  
The device comes with a PECO filter and a pre-filter. Ensure they are correctly installed before first use. Refer to the maintenance section for detailed filter replacement instructions.

Your browser does not support the video tag.

*Official Molekule video demonstrating the process of changing the filter.*

5. **Power On:** Press the power button on the top of the device or use the mobile app to turn on the purifier.
6. **Wi-Fi Setup (Optional):** Follow the on-screen prompts or app instructions to connect your device to your home Wi-Fi network for remote control features.

# OPERATING YOUR MOLEKULE AIR PURIFIER

---

## Control Panel

The touch-screen display on the top of the unit allows you to select fan speeds and view filter status.

## Fan Speed Modes

- **Silent Mode:** Operates at the lowest fan speed for quiet purification, ideal for bedrooms or quiet environments.
- **Auto Mode:** The purifier automatically adjusts its fan speed based on detected air quality (if equipped with a particle sensor, otherwise it maintains a balanced purification level).
- **Boost Mode:** Activates the highest fan speed for rapid air purification, useful when air quality is poor or after cooking/cleaning.

## Mobile App Control

Download the Molekule app from the App Store or Google Play. Once connected to Wi-Fi, you can remotely control fan speeds, monitor filter life, and receive notifications.

## MAINTENANCE AND FILTER REPLACEMENT

---

### Filter Life Indicators

The device's display and mobile app will indicate the remaining life of your PECO filter and pre-filter.

### Replacing the PECO Filter

The PECO filter typically lasts for 6 months.

1. Power off and unplug the device.
2. Twist the top section of the purifier counter-clockwise and lift it off.
3. Carefully remove the used PECO filter.
4. Insert the new PECO filter, ensuring it is seated correctly.
5. Replace the top section and twist clockwise to secure.
6. Plug in and power on the device. Reset the filter life indicator via the app or device controls.

### Replacing the Pre-Filter

The pre-filter typically lasts for 3 months.

1. Power off and unplug the device.
2. Locate the pre-filter compartment near the base of the unit.
3. Remove the old pre-filter.
4. Insert the new pre-filter.
5. Close the compartment.
6. Plug in and power on the device. Reset the filter life indicator via the app or device controls.

Your browser does not support the video tag.

*Official Molekule video demonstrating the process of changing the filter.*

## Advanced filters. Breezy delivery.

With filter auto-refills, subscribers get automatic access to Molekule's constant filter innovation and the absolute latest air purification technology for less than buying individual filters.



*The cylindrical PECO filter and two rectangular pre-filters for the Molekule Air Purifier, ready for replacement.*

## TROUBLESHOOTING COMMON ISSUES

Issue	Possible Cause	Solution
Device not turning on	Not plugged in or power outage	Check power connection; ensure outlet is functional.
Poor airflow	Clogged filters	Check and replace PECO and/or pre-filters.
Wi-Fi connectivity issues	Incorrect password or network interference	Re-enter Wi-Fi password in the app; ensure device is within Wi-Fi range.
Unusual noise	Obstruction or loose filter	Check for any foreign objects; ensure filters are securely installed.

For further assistance, please contact Molekule customer support.

## PRODUCT SPECIFICATIONS

Feature	Detail
Model Number	MH1-BBB-1
Color	Silver
Product Dimensions	8.25"D x 8.25"W x 32"H
Item Weight	24.8 pounds
Noise Level	41 Decibels (lowest setting)
Controller Type	Android, iOS App, Touchscreen
Included Components	1 PECO Filter (recommended 6 month life), 1 Pre-Filter (recommended 3 month life), Molekule Air Purifier
UPC	818701020087

*Note: Specifications are subject to change without notice.*

## WARRANTY AND CUSTOMER SUPPORT

### Warranty Information

Your Molekule Air Purifier comes with a limited warranty covering defects in materials and workmanship. Please refer to the warranty card included in your product packaging or visit the official Molekule website for full terms and conditions.

### Customer Support

For technical support, troubleshooting, or inquiries about replacement filters, please visit the [Molekule Store on Amazon](#) or the official Molekule website.