

## Ematic AT103B

# Ematic AT103B Digital TV Converter Box User Manual

Model: AT103B

## 1. INTRODUCTION

---

The Ematic AT103B Digital Converter Box is designed to enable televisions without a built-in digital tuner to receive over-the-air digital broadcasts. This device enhances your viewing experience by providing features such as an electronic program guide, parental controls, and the ability to record and play back multimedia content via a USB connection. A full-function remote control is included for convenient operation.



Figure 1.1: Ematic AT103C Digital Converter Box User Manual Cover. Note: An antenna is required and sold separately.

## 2. EQUIPMENT OVERVIEW

## 2.1 Front Panel

## Equipment Overview and Setup



### Front Panel

#### 1. Power Button

Power ON/OFF the receiver

#### 2. Channel UP/DOWN

Change the channel UP/DOWN

#### 3. LED Indicator

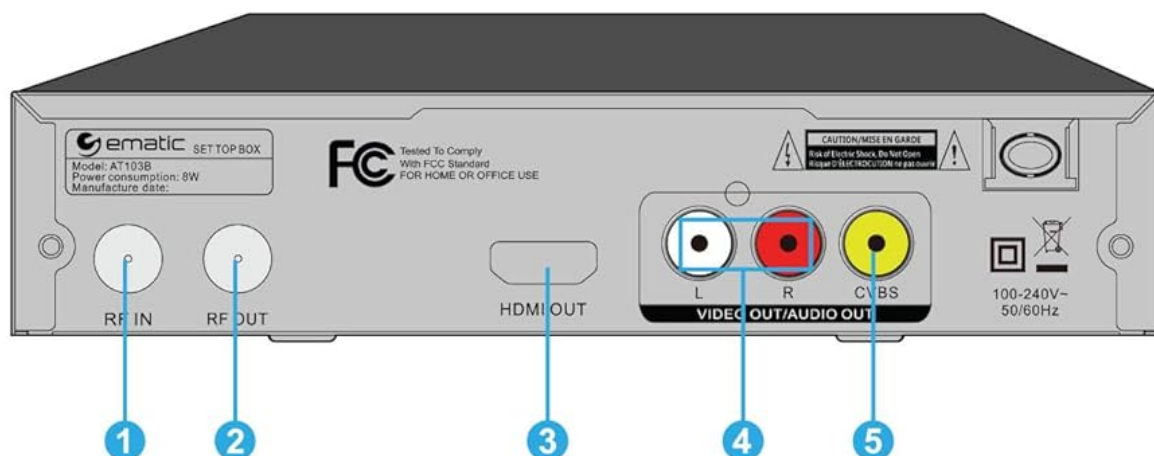
Displays current channel

#### 4. Infrared Receiver

Remote Control Receiver Location

#### 5. USB

5V/500 mA (max. supported)



### Back Panel

#### 1. RF IN

Connect antenna to digital converter receiver

#### 2. RF OUT

CH 3/4 NTSC RF Output;  
Connect RF Cable to television or monitor

#### 3. HDMI

HDMI Output

#### 4. L/R Audio

If your TV or monitor uses composite cables, connect Left (White) and Right (Red) composite cables from television or another separate audio device (i.e. sound system) to digital converter receiver.

#### 5. Video

If your TV or monitor uses composite cables, connect the Video (Yellow) cable to the digital converter receiver.

- **1. Power Button:** Press to turn the receiver ON or OFF.
- **2. Channel UP/DOWN:** Buttons to change the channel up or down.
- **3. LED Indicator:** Displays the current channel number.
- **4. Infrared Receiver:** Location for receiving signals from the remote control.
- **5. USB Port:** 5V/500mA (maximum supported) for multimedia playback and recording.

## 2.2 Back Panel

- **1. RF IN:** Connect your antenna to this port.
- **2. RF OUT:** CH 3/4 NTSC RF Output. Connect to your television's antenna input.
- **3. HDMI Output:** Connect to an HDMI input on your TV or monitor for high-definition video and audio.
- **4. L/R Audio (Red/White):** Connect to the Left and Right audio inputs on your TV or audio receiver if using composite video.
- **5. Video (Yellow):** Connect to the composite video input on your TV or monitor.

## 3. SETUP AND CONNECTIONS

---

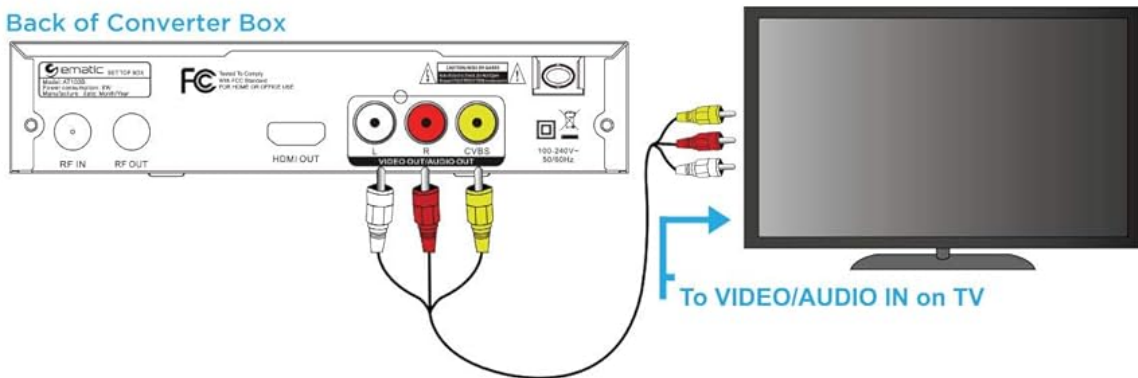
Follow these steps to connect your Ematic Digital Converter Box to your television.

### 3.1 Connecting with Composite Cables (White, Red, Yellow)

If your TV or monitor uses composite cables, connect the White (Left Audio), Red (Right Audio), and Yellow (Video) cables from the converter box to the corresponding VIDEO/AUDIO IN ports on your TV.

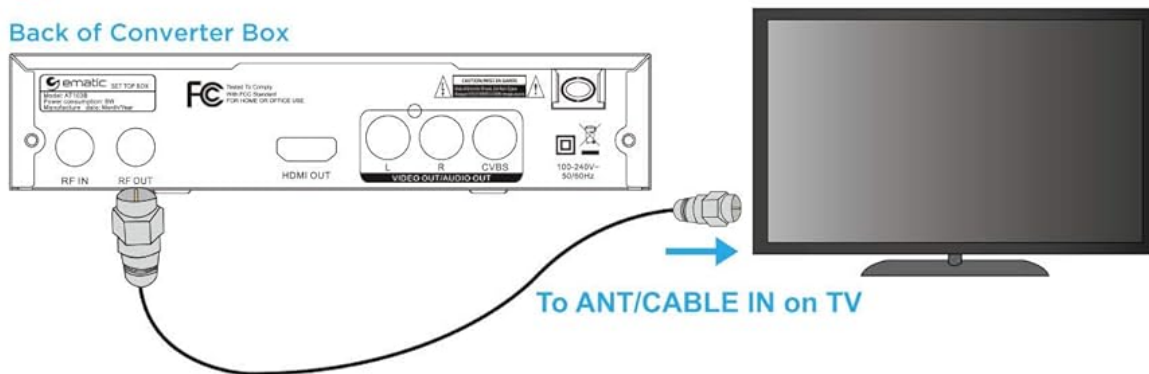
## B Composite Cables (White, Red, Yellow)

Back of Converter Box



## C RF Cable

Back of Converter Box



## 4 Power ON the Converter Box



Figure 3.1: Connection diagrams for Composite and RF cables.

## **3.2 Connecting with RF Cable**

Connect your antenna to the RF IN port on the converter box. Then, connect an RF cable from the RF OUT port on the converter box to the ANT/CABLE IN port on your TV.

## **3.3 Connecting with HDMI Cable**

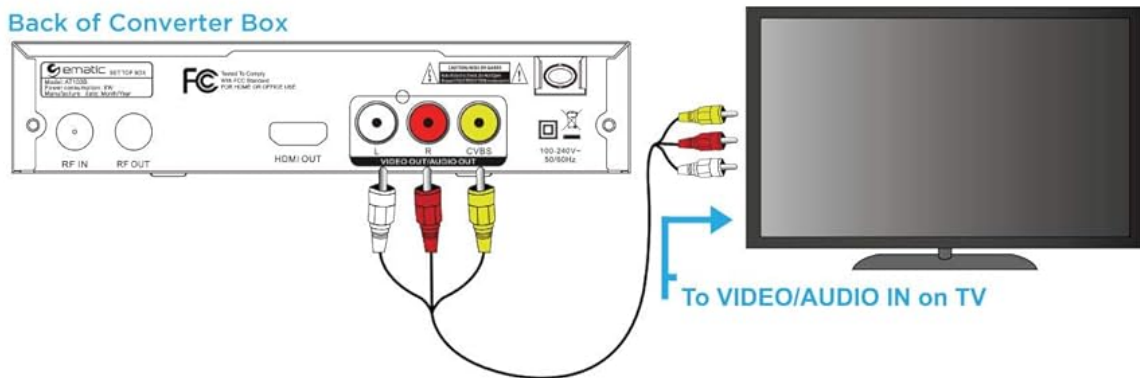
For the best picture quality, connect an HDMI cable from the HDMI OUT port on the converter box to an available HDMI IN port on your TV.

## **3.4 Powering On**

After all connections are made, plug the power adapter into the converter box and then into a wall outlet. Press the Power button on the front panel or the remote control to turn on the device.

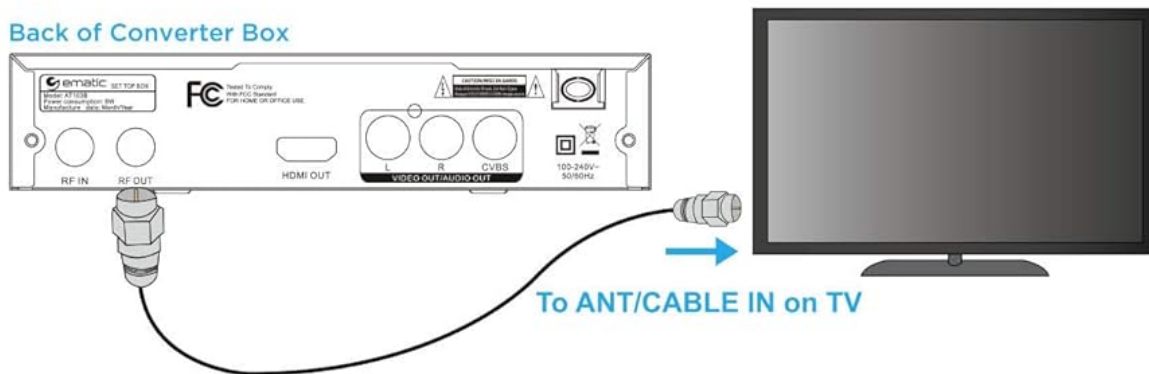
## B Composite Cables (White, Red, Yellow)

Back of Converter Box



## C RF Cable

Back of Converter Box



## 4 Power ON the Converter Box



Figure 3.2: Powering on the Converter Box.

## 4. OPERATING INSTRUCTIONS

---

### 4.1 Channel Scanning and Management

- **Auto Tuning:** The converter box features an auto-tuning function to scan and store available digital channels. Refer to the on-screen menu for initiating auto-scan.
- **Favorite Channel List:** Create and manage a list of your preferred channels for quick access.

### 4.2 Recording and Playback

The device supports recording and playback of content using a USB drive (not included).

- **Real-time Recording:** Record live TV directly to your connected USB drive.
- **Appointed Recording:** Schedule recordings of your favorite shows for later viewing.
- **Multimedia Playback:** Play media files directly from your USB drive. Supported formats include MP3, AAC, AVI, MPG, DAT, VOB, MKV, MJPEG, JPEG, BMP, and PNG.

### 4.3 Parental Controls

Manage content access for children using the parental control features:

- **Set Password:** Create a password to secure settings and restricted content.
- **Block Channels:** Prevent access to inappropriate channels.
- **Restrict Programs:** Limit viewing based on Parental Guidance ratings.

### 4.4 Electronic Program Guide (EPG) and Closed Captioning

- **EPG:** Access program information and schedules through the electronic program guide.
- **Closed Captioning:** Enable closed captioning for on-screen text display of dialogue and sounds.

### 4.5 Time-Shift Functionality

Utilize the time-shift features to control live television:

- **Pause Live TV:** Temporarily pause live broadcasts.
- **Fast Forward/Rewind:** Skip through commercials or review missed moments.

## 5. TROUBLESHOOTING

---

If you encounter issues with your Ematic Digital Converter Box, please refer to the following common troubleshooting tips:

- **No Power:** Ensure the power adapter is securely connected to the converter box and a working electrical outlet. Try a different outlet.
- **No Signal/Picture:** Verify that the antenna is properly connected to the RF IN port. Ensure your TV input is set to the correct source (HDMI, AV, or TV/Antenna). Perform an auto-scan for channels. Check antenna positioning.
- **Remote Control Not Working:** Check the batteries in the remote control and replace them if necessary. Ensure there are no obstructions between the remote and the converter box's infrared receiver.
- **Poor Picture Quality:** Ensure all cables are securely connected. If using composite cables, consider switching to HDMI for better quality if your TV supports it. Adjust antenna position for optimal signal reception.
- **Recording Issues:** Ensure the USB drive is properly inserted and has sufficient free space. Check that the USB drive is formatted correctly (FAT32 is commonly supported).

For further assistance, consult the full user manual provided with your product or visit the Ematic support website.



## 6. SPECIFICATIONS



Feature	Specification
Model	AT103B
Product Dimensions	16.6 x 16 x 14.4 inches
Weight	1.3 Pounds
Manufacturer	EMATIC
Interface Type	USB
Number of Channels	1 (Digital Tuner)
UPC	042822196110

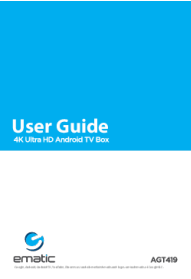



## 7. WARRANTY AND SUPPORT

Warranty information for the Ematic AT103B Digital Converter Box is typically provided with the product packaging or can be found on the official Ematic website. Please retain your proof of purchase for warranty claims.

For technical support, product registration, or to access frequently asked questions, please visit the official Ematic support portal or contact their customer service department. Contact details are usually available on the manufacturer's website or in the product documentation.

### Related Documents - AT103B

 The image shows the front cover of the Ematic AT103B TV Converter Box User Manual. It features the Ematic logo at the top left, a photograph of the black converter box with a remote control resting on top, and the text 'User Manual' and 'AT103B' at the bottom.	<p><a href="#">Ematic AT103B TV Converter Box User Manual</a></p> <p>User manual for the Ematic AT103B TV Converter Box, providing setup, operation, and troubleshooting information.</p>
 The image shows the front cover of the Ematic AT103B Converter Box User Manual. It features the Ematic logo at the top left, the text 'USER'S MANUAL' and 'AT103B' in the center, and a photograph of the converter box at the bottom.	<p><a href="#">Ematic AT103B Converter Box User Manual</a></p> <p>Comprehensive user manual for the Ematic AT103B Converter Box, detailing setup, operation, PVR functions, troubleshooting, and technical specifications for optimal use.</p>

 <p>User Guide 4K Ultra HD Android TV Box</p> <p>ematic AGT419</p>	<p><a href="#">Ematic AGT419 4K Android TV Box User Guide: Setup, Features &amp; Troubleshooting</a></p> <p>Get the most out of your Ematic AGT419 Quad Core 4K UltraHD Android TV Box with this comprehensive user guide. Learn setup, connections, remote pairing, Google Assistant, casting, and troubleshooting tips.</p>
 <p>ematic androidtv 4K Ultra HD Android TV Box SRT202EMATIC</p> <p>User Manual</p> <p>Google TV HDMI Bluetooth YouTube</p>	<p><a href="#">Ematic SRT202EMATIC 4K Ultra HD Android TV Box User Manual</a></p> <p>Comprehensive user manual for the Ematic SRT202EMATIC 4K Ultra HD Android TV Box, detailing setup, features, settings, troubleshooting, and technical specifications. Learn how to connect, configure, and use your device with Google Assistant and Chromecast.</p>
 <p>User Manual</p>	<p><a href="#">Ematic EGM003 User Manual: Setup, Settings, and Features</a></p> <p>Comprehensive user manual for the Ematic EGM003 tablet, covering setup, basic settings like Wi-Fi, display, sound, security, and system configurations, along with guarantee conditions and FCC compliance information.</p>
 <p>User's Manual</p> <p>Ematic 10.1\" HD Quad-Core Tablet with Android 5.1 (Lollipop)</p>	<p><a href="#">Ematic 10.1\" HD Quad-Core Tablet User's Manual</a></p> <p>Comprehensive user manual for the Ematic 10.1\" HD Quad-Core Tablet with Android 5.1 (Lollipop), covering setup, features, settings, and troubleshooting.</p>