

## ZEBRONICS ZEB-COUNTY

# Zebronics ZEB-COUNTY 3W Wireless Bluetooth Portable Speaker User Manual

Model: ZEB-COUNTY

## 1. SAFETY INFORMATION

Please read these instructions carefully before using the product and retain them for future reference. Observe all warnings and safety precautions to ensure proper operation and prevent damage.

- Do not expose the speaker to water or moisture.
- Avoid extreme temperatures.
- Do not disassemble the speaker. Repairs should only be performed by qualified personnel.
- Keep away from direct sunlight and heat sources.
- Use only the charging cable provided with the product.

## 2. PACKAGE CONTENTS

Verify that all items are present in the package:

- 1 x Zebronics ZEB-COUNTY Portable Speaker
- 1 x Micro USB Charging/3.5mm AUX Cable
- 1 x User Manual

## 3. PRODUCT OVERVIEW

The Zebronics ZEB-COUNTY speaker features a compact design with multiple connectivity options and a convenient carry handle.



Image: Front view of the Zebronics ZEB-COUNTY portable speaker, showcasing its compact design and integrated carry handle.

### 3.1. Controls and Ports

## Media Controls



Image: Diagram illustrating the media controls on the top of the ZEB-COUNTY speaker, including Mode, Play/Pause, Volume Up/Next, and Volume Down/Previous buttons.

- **Mode Button:** Switches between Bluetooth, FM Radio, USB, Micro SD, and AUX modes.
- **Play/Pause Button:** Plays or pauses audio. Answers or ends calls.
- **Vol+/Next Button:** Short press for next track/station. Long press to increase volume.
- **Vol-/Prev Button:** Short press for previous track/station. Long press to decrease volume.

## Connectivity



Image: Diagram showing the connectivity ports on the rear of the ZEB-COUNTY speaker, including mSD card slot, USB port, Charging port, and Power On/Off switch.

- **mSD Slot:** For Micro SD card playback.
- **USB Port:** For USB drive playback.
- **Charging Port (Micro USB):** For charging the speaker.
- **Power On/Off Switch:** To turn the speaker on or off.
- **AUX Port (integrated with charging cable):** For wired audio input.

## 4. SETUP

### 4.1. Initial Charging

Before first use, fully charge the speaker. Connect the Micro USB end of the provided cable to the speaker's charging port and the USB-A end to a 5V DC power adapter (not included) or a computer USB port. The charging indicator will illuminate during charging and turn off once fully charged. Charging time is approximately 2.5 to 4-5 hours.

### 4.2. Powering On/Off

Slide the Power On/Off switch to the 'ON' position to turn on the speaker. Slide it to the 'OFF' position to turn off the speaker.

## 5. OPERATING INSTRUCTIONS

### 5.1. Mode Selection

Press the 'Mode' button repeatedly to cycle through the available input modes: Bluetooth, FM Radio, USB, Micro SD, and AUX.

### 5.2. Volume Control

- **Increase Volume:** Long press the 'Vol+' button.
- **Decrease Volume:** Long press the 'Vol-' button.

### 5.3. Track Navigation

- **Next Track:** Short press the 'Vol+' button.
- **Previous Track:** Short press the 'Vol-' button.

## 6. CONNECTIVITY

### 6.1. Bluetooth Pairing

1. Turn on the speaker. It will automatically enter Bluetooth mode and indicate it is ready for pairing.
2. Enable Bluetooth on your mobile device or computer.
3. Search for available Bluetooth devices and select 'ZEB-COUNTY' from the list.
4. Once paired, the speaker will confirm the connection.

### 6.2. USB Playback

Insert a USB flash drive containing MP3 audio files into the USB port. The speaker will automatically switch to USB mode and begin playback. Use the 'Vol+' and 'Vol-' buttons for track navigation.

### 6.3. Micro SD Card Playback

Insert a Micro SD card containing MP3 audio files into the mSD slot. The speaker will automatically switch to Micro SD mode and begin playback. Use the 'Vol+' and 'Vol-' buttons for track navigation.

### 6.4. AUX Mode

Connect one end of the provided 3.5mm AUX cable to the speaker's AUX port (integrated with the charging cable) and the other end to the audio output of your device. Press the 'Mode' button until AUX mode is selected. Audio will play from your connected device.

## 7. CALL FUNCTION

When connected via Bluetooth to a smartphone, the speaker supports call functions.



Image: Illustration of the ZEB-COUNTY speaker being used for a call, with a smartphone displaying an incoming call screen.

- **Answer Call:** Press the 'Play/Pause' button once.
- **End Call:** Press the 'Play/Pause' button once during a call.
- **Reject Call:** Long press the 'Play/Pause' button.

## 8. FM RADIO

To use the FM radio function:

1. Press the 'Mode' button to switch to FM Radio mode.
2. Long press the 'Play/Pause' button to automatically scan and save available FM stations.
3. Short press the 'Vol+' or 'Vol-' buttons to navigate between saved stations.

For improved FM reception, connect the Micro USB charging cable to the charging port; it acts as an antenna.

## 9. CHARGING

Connect the speaker to a 5V DC power source using the provided Micro USB cable. The charging indicator will show the charging status. A full charge takes approximately 2.5 to 4-5 hours. The speaker offers approximately 10 hours of playback time on a full charge (at 50% volume).



Image: Illustration highlighting the 12-hour battery backup of the ZEB-COUNTY speaker, shown held in a hand outdoors.

## 10. MAINTENANCE

- Clean the speaker with a soft, dry cloth. Do not use harsh chemicals or abrasive cleaners.
- Store the speaker in a cool, dry place when not in use.
- Avoid dropping or subjecting the speaker to strong impacts.

## 11. TROUBLESHOOTING

Problem	Possible Cause	Solution
Speaker does not turn on	Low battery; Power switch off	Charge the speaker; Slide power switch to 'ON'
No sound	Volume too low; Incorrect mode; Device not connected	Increase volume; Select correct mode; Ensure device is paired/connected
Bluetooth pairing fails	Speaker not in pairing mode; Device Bluetooth off; Too far apart	Ensure speaker is in Bluetooth mode; Turn on device Bluetooth; Move devices closer (within 10m)
FM reception is poor	No antenna connected; Weak signal	Connect the Micro USB charging cable (acts as antenna); Try moving to a different location

## 12. SPECIFICATIONS



Feature	Detail
Output Power	3W
Speaker Impedance	4Ω
Frequency Response	120Hz-15kHz
Bluetooth Version	Not specified (Wireless BT)
Bluetooth Range	Up to 10 meters
Connectivity Options	Wireless BT, USB, Micro SD, AUX, FM
Charging Time	2.5 - 4-5 hours
Playback Time	Approx. 10 hours (at 50% volume)
Battery Type	Lithium Polymer
Battery Capacity	2000 mAh
Product Dimensions	14D x 8W x 12H Centimeters
Item Weight	390 Grams

### 13. WARRANTY AND SUPPORT

The Zebronics ZEB-COUNTY speaker comes with a **1-year warranty** from the date of purchase. Please retain your purchase receipt for warranty claims.

For technical support or warranty service, please contact Zebronics customer service. Contact details can typically be found on the official Zebronics website or on your product packaging.

Manufacturer: ZEBRONICS INDIA PRIVATE LIMITED



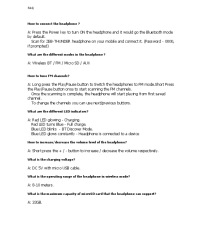


Address: 13/7, Smith Road, Royapettah, Chennai-600002, India

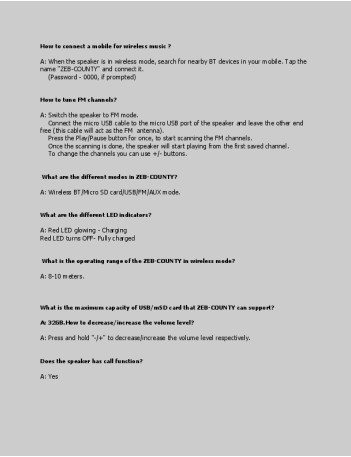
© 2025 Zebronics. All rights reserved.

### Related Documents - ZEB-COUNTY

<div><p><b>How to connect the headphones</b></p><p>1. Turn on the headphones by pressing the power button. The LED indicator will light up.</p><p>2. Press and hold the power button for 3 seconds to enter pairing mode. The LED indicator will flash red and blue.</p><p>3. Press the power button again to turn off the headphones.</p><p><b>How to connect the headphones to a device</b></p><p>1. Turn on the device's Bluetooth function.</p><p>2. Press the power button on the headphones to enter pairing mode.</p><p>3. Select the headphones from the list of available devices.</p><p>4. Press the power button on the headphones to confirm the connection.</p><p><b>How to use the headphones</b></p><p>1. Press the play/pause button to start or pause the audio.</p><p>2. Press the volume up/down buttons to adjust the volume.</p><p>3. Press the power button to turn off the headphones.</p><p><b>How to charge the headphones</b></p><p>1. Connect the charging cable to the charging port on the back of the headphones.</p><p>2. Plug the other end of the cable into a USB port or a power adapter.</p><p>3. The LED indicator will light up when the headphones are charging.</p><p>4. The LED indicator will turn off when the headphones are fully charged.</p></div>	<p><a href="#">Zebronics Zeb-Bang Headphones User Guide and FAQ</a></p> <p>A comprehensive guide to connecting, operating, and troubleshooting the Zebronics Zeb-Bang wireless headphones, covering LED indications, modes, voice assistant, media control, call functions, and charging.</p>
---	---



	<p><a href="#">Zebronics ZEB-COUNTY 3 Portable BT Speaker User Manual   Features, Specs, and Operation</a></p> <p>Comprehensive user manual for the Zebronics ZEB-COUNTY 3 portable Bluetooth speaker. Learn about its features, specifications, charging, pairing, modes (BT, FM, AUX, USB/Micro SD), and TWS connectivity.</p>
	<p><a href="#">Zebronics ZEB-Delight Pro Mini Soundbar User Manual - Features, Specifications, and Operation Guide</a></p> <p>This user manual provides comprehensive details for the Zebronics ZEB-Delight Pro Mini Soundbar. It covers product features, technical specifications, package contents, button descriptions, and step-by-step instructions for various modes including Bluetooth, USB, mSD, AUX, and FM Radio. Learn how to charge the device, use call functions, and set up TWS mode.</p>
	<p><a href="#">ZEBRONICS Zeb-Thunder Wireless Bluetooth Headphone FAQ and Specifications</a></p> <p>Frequently Asked Questions and technical details for the ZEBRONICS Zeb-Thunder wireless Bluetooth headphone, covering connectivity, modes, LED indicators, charging, and more.</p>
	<p><a href="#">Zebronics Sound Feast 55 Portable BT Speaker User Manual</a></p> <p>User manual for the Zebronics Sound Feast 55 Portable BT Speaker, detailing features, specifications, and operating instructions.</p>
	<p><a href="#">Zebronics ZEB-COUNTY Portable BT Speaker User Manual</a></p> <p>User manual for the Zebronics ZEB-COUNTY portable Bluetooth speaker. Details features like wireless connectivity, USB/mSD card support, FM radio, and AUX input, along with specifications and operating instructions.</p>



[pdf] Troubleshooting Guide Guide

S Pavithra Troubleshooting Guide ZEBRONICS Zeb County Bluetooth Speaker with Built in FM Radio Aux Input and Call Function Grey Amazon Electronics 61SOH V7IML m media amazon images I |||

How to connect a mobile for wireless music A: When the speaker is in wireless mode, search for nearby BT devices in your mobile. Tap the name **ZEB-COUNTY** and connect it. Password - 0000, if prompted How to tune FM channels A: Switch the speaker to FM mode. Connect the micro USB cable to the mi...

lang:en score:38 filesize: 84.31 K page\_count: 2 document date: 2022-03-02



[Zebronics COUNTY Portable BT Speaker User Manual | Features, Specs, Instructions](#)

User manual for the Zebronics COUNTY Portable BT Speaker. Covers features, specifications, button functions, and detailed operating instructions for Bluetooth, USB/Micro SD, FM Radio, and TWS connectivity.

lang:en score:32 filesize: 1.01 M page\_count: 5 document date: 2024-04-12



[pdf] User Manual

ZEB COUNTY 5 UM cdr Design User Manual Zeb County Portable Wireless Speaker Zebronics zebronics info user manual zeb Audio speaker BT |||

...

lang:en score:31 filesize: 1.38 M page\_count: 6 document date: 2022-10-13



### [Zebronics & Zavia Audio and Tech Product Catalog](#)

Explore a comprehensive catalog of audio devices and accessories from leading brands Zebronics and Zavia. Discover a wide range of Bluetooth earbuds, headphones, portable speakers, and keyboard/mouse combos, each designed to enhance your audio experience and daily connectivity.

lang:en score:30 filesize: 1.95 M page\_count: 52 document date: 2024-01-27



### [Aetos Digital Innovations Private Limited: IT Hardware, Accessories & Electronics Catalog](#)

Discover the extensive catalog of IT hardware, accessories, and consumer electronics from Aetos Digital Innovations Private Limited. Featuring brands like Zebronics and Frontech, offering speakers, headphones, keyboards, monitors, SSDs, and more.

lang:en score:27 filesize: 480.14 K page\_count: 14 document date: 2023-04-12



### [Zebronics ZEB-COUNTY Portable BT Speaker User Manual](#)

User manual for the Zebronics ZEB-COUNTY portable Bluetooth speaker. Details features like wireless connectivity, USB/mSD card support, FM radio, and AUX input, along with specifications and operating instructions.

lang:en score:26 filesize: 1.38 M page\_count: 6 document date: 2021-11-22



[Zebronic ZEB-COUNTY 7 Portable BT Speaker User Manual](#)

User manual for the Zebronic ZEB-COUNTY 7 Portable BT Speaker (Model ZEB-PSPK 40). Details features, specifications, button descriptions, operating instructions for BT, Micro SD/USB, AUX, FM modes, TWS connectivity, and charging. Includes warranty information link.

lang:en score:25 filesize: 34.04 M page\_count: 6 document date: 2025-01-03



[\[pdf\] User Manual](#)

ZEB COUNTY PLUS PSPK 48 UM cdr gowtham zebronics info user manual zeb Audio speaker Portable BT |||

...

lang:en score:25 filesize: 5.19 M page\_count: 6 document date: 2025-01-27



[Zebronic ZEB-COUNTY 3 Portable BT Speaker User Manual | Features, Specs, and Operation](#)

Comprehensive user manual for the Zebronic ZEB-COUNTY 3 portable Bluetooth speaker. Learn about its features, specifications, charging, pairing, modes (BT, FM, AUX, USB/Micro SD), and TWS connectivity.

lang:en score:24 filesize: 2.42 M page\_count: 6 document date: 2021-11-24



[Zebronic County 6 Portable Bluetooth Speaker User Manual](#)

User manual for the Zebronic County 6 portable wireless Bluetooth speaker. Includes operation instructions, safety precautions, and troubleshooting.

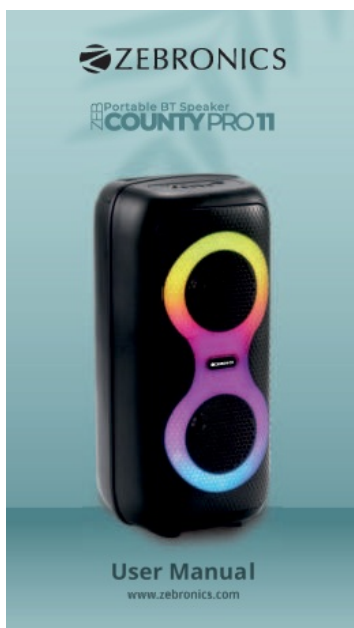
lang:en score:21 filesize: 22.81 M page\_count: 5 document date: 2025-01-02



[Zebronic COUNTY PRO 12 Portable BT Speaker User Manual](#)

Comprehensive user manual for the Zebronic COUNTY PRO 12 Portable BT Speaker, covering features, specifications, button functions, connectivity, and operation.

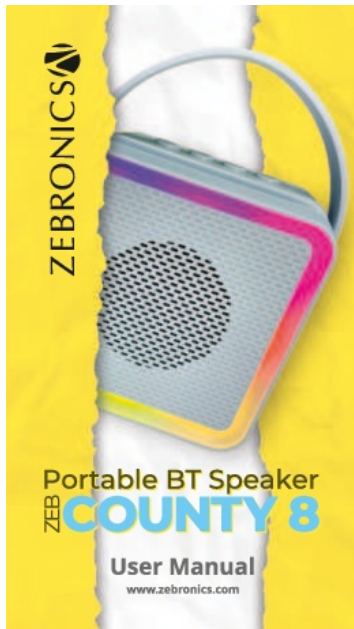
lang:en score:21 filesize: 4.92 M page\_count: 7 document date: 2025-04-01



[Zebronic COUNTY PRO 11 Portable BT Speaker User Manual](#)

Comprehensive user manual for the Zebronic COUNTY PRO 11 Portable BT Speaker, detailing features, specifications, button functions, connectivity options (Bluetooth, USB, Micro SD, AUX, FM), TWS pairing, RGB lighting, and charging instructions.

lang:en score:19 filesize: 4.32 M page\_count: 7 document date: 2025-01-31



### [Zebronic ZEB-COUNTY 8 Portable BT Speaker User Manual](#)

User manual for the Zebronic ZEB-COUNTY 8 Portable BT Speaker, providing detailed information on features, specifications, button functions, various operating modes (Bluetooth, FM, USB, Micro SD), TWS pairing, LED light control, and charging instructions.

lang:en score:19 filesize: 4.9 M page\_count: 7 document date: 2025-06-06