

LogiLink ET0009

LogiLink ET0009 Mechanical DIN-Rail Time Switch User Manual

Model: ET0009

1. INTRODUCTION

The LogiLink ET0009 is a mechanical DIN-rail time switch designed for controlling electrical installations based on a 24-hour program. This device allows you to automate the switching ON and OFF of various electrical loads such as lighting systems, irrigation systems, water heaters, and other private or industrial electrical circuits. It offers reliable time-based control with easy mechanical programming.

Key Features:

- 24-hour programming capability.
- Minimum operating time: 15 minutes per day, 2 hours per week.
- Manual switch position: ON/Automatic.
- IP20 protection rating.
- Supports 48 ON/OFF programs (2 x 16 combinations).
- Designed for 35 mm DIN rails.

2. SAFETY INSTRUCTIONS

WARNING: Installation and maintenance of this device must only be performed by a qualified electrician in accordance with all local and national electrical codes. Failure to follow these instructions may result in electric shock, fire, or serious injury.

- Always disconnect power at the main circuit breaker before installing or servicing the time switch.
- Ensure the device is rated for the voltage and current of the circuit it will control.
- Do not expose the device to moisture or extreme temperatures.
- Verify all connections are secure to prevent loose wiring and potential hazards.
- The device has an IP20 protection rating, meaning it is protected against solid objects larger than 12.5mm but has no protection against water. Install in a dry environment.

3. PRODUCT OVERVIEW

Familiarize yourself with the components of your LogiLink ET0009 time switch.



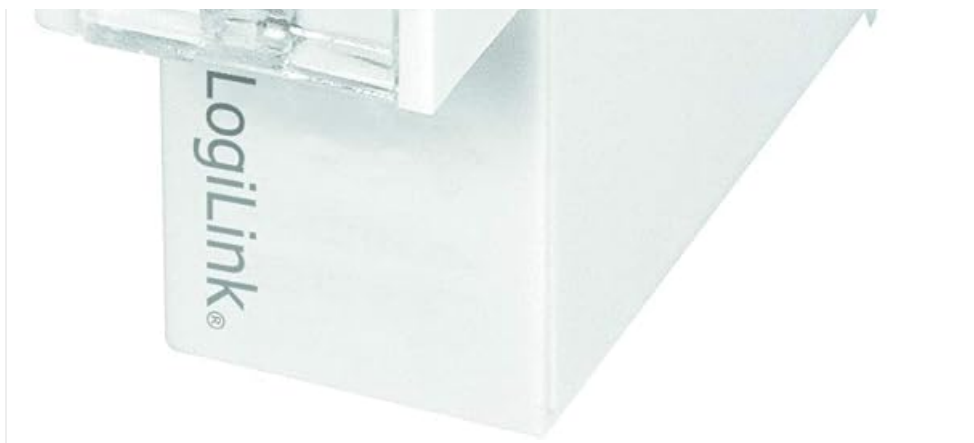
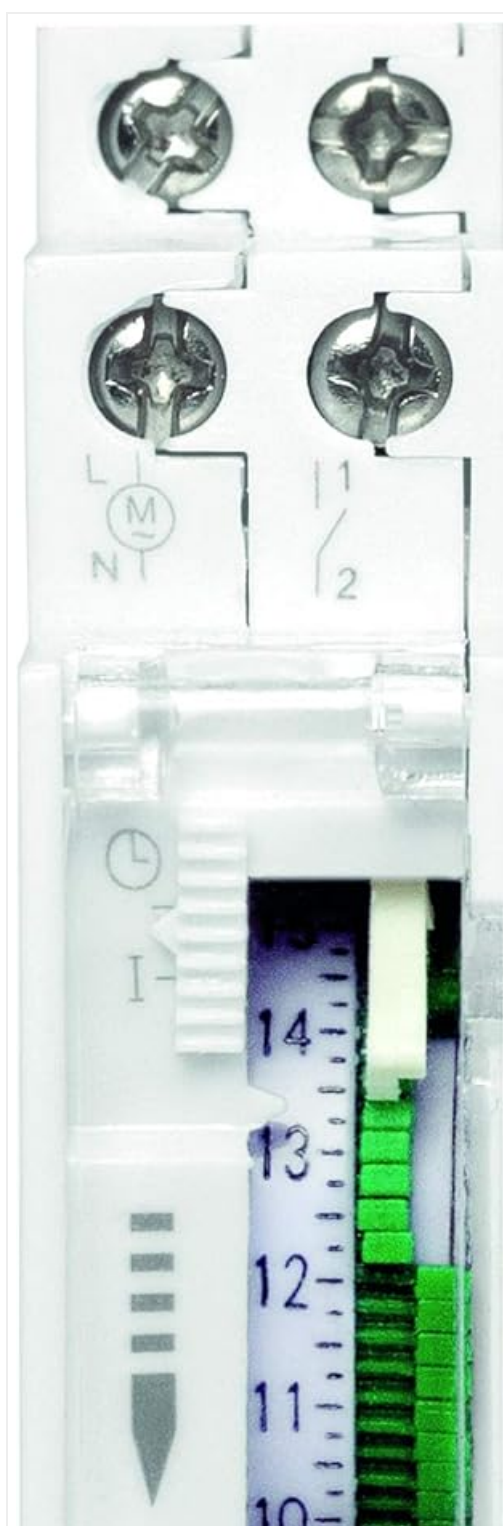


Figure 1: Front view of the LogiLink ET0009 Mechanical DIN-Rail Time Switch, showing the terminal connections at the top and the mechanical programming dial with time indicators and manual override switch on the front.



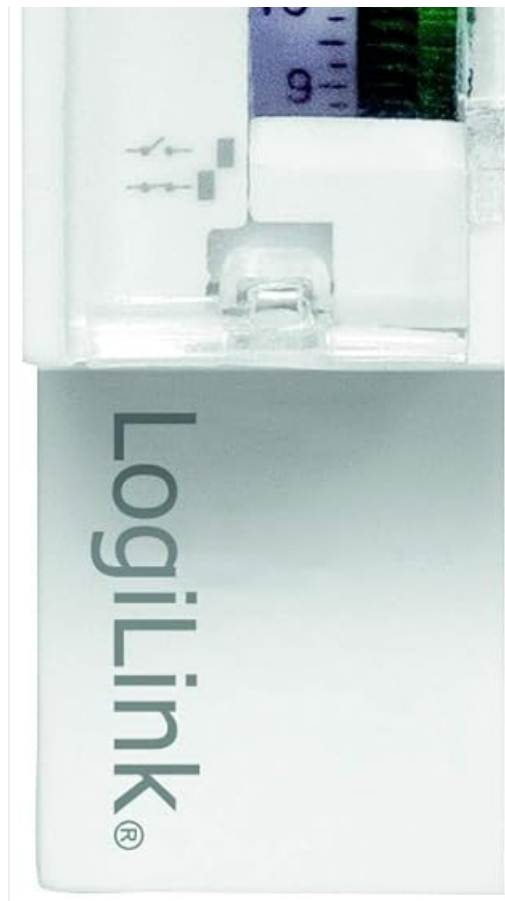


Figure 2: Close-up view of the mechanical programming dial and the manual override switch. The dial features segments for setting ON/OFF times, and the switch allows for manual operation or automatic mode.



Figure 3: Top-down view of the time switch, highlighting the DIN-rail mounting clips at the bottom, which secure the device to a standard 35mm DIN rail.

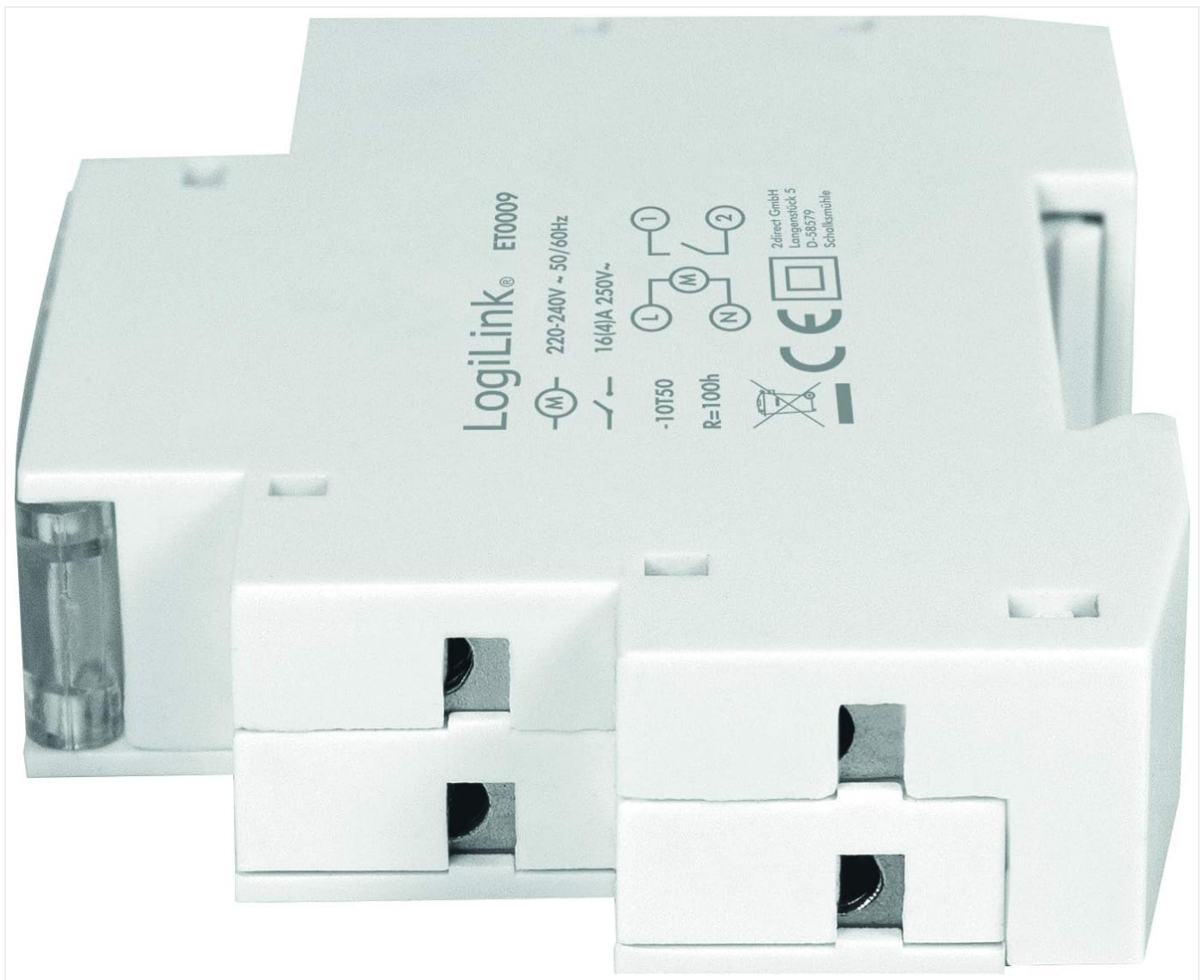


Figure 4: Rear view of the LogiLink ET0009, displaying printed technical specifications, wiring diagram, and compliance markings.

4. INSTALLATION

The LogiLink ET0009 is designed for mounting on a standard 35mm DIN rail within an electrical enclosure.

1. **Power Disconnection:** Before starting any installation, ensure the main power supply to the circuit is completely disconnected at the circuit breaker or fuse box. Verify with a voltage tester.
2. **Mounting:** Clip the time switch onto the 35mm DIN rail in your electrical panel. Ensure it is securely fastened.
3. **Wiring:** Refer to the wiring diagram printed on the device (see Figure 4) and follow these general guidelines:
 - Connect the incoming live (L) and neutral (N) wires to the input terminals marked 'L' and 'N' respectively.
 - Connect the live wire of the load (e.g., light, water heater) to the output terminal marked '1'.
 - Connect the neutral wire of the load to the output terminal marked '2'.
 - Ensure all wire connections are tight and secure.
4. **Verification:** Double-check all wiring connections for correctness and security before restoring power.
5. **Restore Power:** Once installation is complete and verified, restore power to the circuit.

5. OPERATING INSTRUCTIONS

The LogiLink ET0009 uses a mechanical dial for programming ON/OFF cycles.

1. **Set Current Time:** Rotate the entire dial clockwise until the current time aligns with the arrow indicator on the front panel. The dial is marked with 24 hours.
2. **Program ON/OFF Times:** The dial has small segments around its circumference. Each segment typically represents a 15-minute interval.
 - To set an "ON" period, push the corresponding segments outwards.
 - To set an "OFF" period, leave the corresponding segments pushed inwards.
 - The timer supports up to 48 ON/OFF switching programs per 24-hour cycle.
3. **Manual Override Switch:** The switch on the front panel (often marked with symbols like 'I', 'O', and a clock icon) allows you to manually control the output.
 - **'I' (ON):** Keeps the output continuously ON, overriding the program.
 - **'O' (OFF):** Keeps the output continuously OFF, overriding the program.
 - **Clock Icon (AUTO):** The timer operates according to the programmed ON/OFF cycles. Ensure this position is selected for automatic operation.
4. **Operation:** Once programmed and set to AUTO, the timer will automatically switch the connected load ON and OFF at the set times.

6. MAINTENANCE

The LogiLink ET0009 time switch requires minimal maintenance.

- **Cleaning:** Disconnect power before cleaning. Use a dry, soft cloth to wipe the exterior of the device. Do not use liquid cleaners or solvents.
- **Inspection:** Periodically check the wiring connections to ensure they remain secure. Inspect for any signs of damage or overheating.
- **Environment:** Ensure the installation environment remains dry and free from excessive dust or corrosive substances.

7. TROUBLESHOOTING

If you encounter issues with your LogiLink ET0009 time switch, refer to the following common problems and solutions:

Problem	Possible Cause	Solution
Device does not switch ON/OFF as programmed.	<ul style="list-style-type: none">◦ Manual override switch is not in AUTO position.◦ Incorrect programming of segments.◦ Current time not set correctly.◦ No power to the device.	<ul style="list-style-type: none">◦ Set the manual override switch to the clock icon (AUTO) position.◦ Review and re-program the ON/OFF segments carefully.◦ Adjust the dial to the correct current time.◦ Check circuit breaker and wiring connections.

Problem	Possible Cause	Solution
Load remains continuously ON or OFF.	<ul style="list-style-type: none">Manual override switch is in 'I' (ON) or 'O' (OFF) position.All segments are pushed in (OFF) or pulled out (ON).	<ul style="list-style-type: none">Set the manual override switch to the clock icon (AUTO) position.Adjust segments to create desired ON/OFF cycles.
Device is not receiving power.	<ul style="list-style-type: none">Loose wiring connection.Tripped circuit breaker or blown fuse.Faulty device.	<ul style="list-style-type: none">WARNING: Disconnect power first. Check and tighten all wiring connections.Reset the circuit breaker or replace the fuse.If issues persist after checking power and wiring, the device may be faulty and require replacement.

8. SPECIFICATIONS

Feature	Detail
Brand	LogiLink
Model Number	ET0009
Material	Plastic, Metal
Dimensions (D x W x H)	6.5 cm x 10 cm x 1.7 cm (approximate, based on product dimensions)
Item Weight	60 g
Input Voltage	220-240V ~ 50/60Hz
Max Load Current	16(4)A 250V~
Number of Programs	48 ON/OFF settings
Minimum Switching Time	15 minutes
Mounting Type	35mm DIN Rail
Protection Rating	IP20
Country of Origin	China

9. WARRANTY AND SUPPORT

For warranty information and technical support, please refer to the documentation provided with your purchase or visit the official LogiLink website. Keep your proof of purchase for warranty claims.

Contact Information:

- Manufacturer: 2direct GmbH
- For the most up-to-date support information, please visit www.logilink.eu.

