

## Audeze 210-L1-1200-00

# Audeze LCD-1 Audiophile Open-Back Headphones User Manual

Model: LCD-1 (210-L1-1200-00)

## 1. INTRODUCTION

Thank you for choosing the Audeze LCD-1 Audiophile Open-Back Headphones. These headphones are engineered for exceptional audio fidelity, offering a wide soundstage and precise imaging for critical listening, mixing, and mastering. Designed for comfort and portability, the LCD-1 delivers the renowned Audeze planar magnetic sound in a compact form factor.

## 2. SAFETY INFORMATION

- **Hearing Protection:** Avoid listening at high volume levels for extended periods to prevent hearing damage.
- **Environmental Awareness:** Due to their open-back design, these headphones do not provide noise isolation. Be aware of your surroundings when using them, especially in environments where attention is required (e.g., near traffic).
- **Cleaning:** Use a soft, dry cloth for cleaning. Avoid using harsh chemicals or abrasive materials.
- **Storage:** Store the headphones in their protective case when not in use to prevent damage.
- **Moisture:** Keep the headphones away from water and excessive moisture. They are not water resistant.

## 3. PACKAGE CONTENTS

Please check the box for the following items:

- Audeze LCD-1 Audiophile Open-Back Headphones
- 3.5mm to dual 3.5mm audio cable
- 1/4-inch adapter
- Protective Travel Case
- User Guide (this document)

## 4. PRODUCT OVERVIEW

The Audeze LCD-1 headphones feature a lightweight, foldable design with comfortable memory foam ear pads and headband. The open-back earcups house the planar magnetic drivers, delivering exceptional sound clarity.



Figure 4.1: Front view of the Audeze LCD-1 headphones, showcasing the open-back design and comfortable earcups.



Figure 4.2: Top view of the Audeze LCD-1 headphones, highlighting the adjustable headband and earcups.



Figure 4.3: The Audeze LCD-1 headphones folded, demonstrating their compact design for easy portability and storage.



Figure 4.4: Angled view of the Audeze LCD-1 headphones in their folded state, ready to be placed in the protective case.

## 5. SETUP

---

### 5.1 Connecting the Cable

1. Locate the dual 3.5mm connectors on one end of the included audio cable.
2. Insert each 3.5mm connector into the corresponding jack on the bottom of each earcup. Ensure they are fully seated.
3. Connect the single 3.5mm end of the cable to your audio source (e.g., smartphone, computer, audio interface).
4. If your audio source requires a 1/4-inch connection, attach the included 1/4-inch adapter to the single 3.5mm end of the cable before connecting to the source.

### 5.2 Wearing the Headphones

1. Gently unfold the headphones.
2. Place the earcups over your ears, ensuring the memory foam pads fully encompass your ears for optimal comfort and sound.
3. Adjust the headband by sliding the earcups up or down until the headphones fit comfortably and securely on your head. The headband should rest gently on the top of your head.



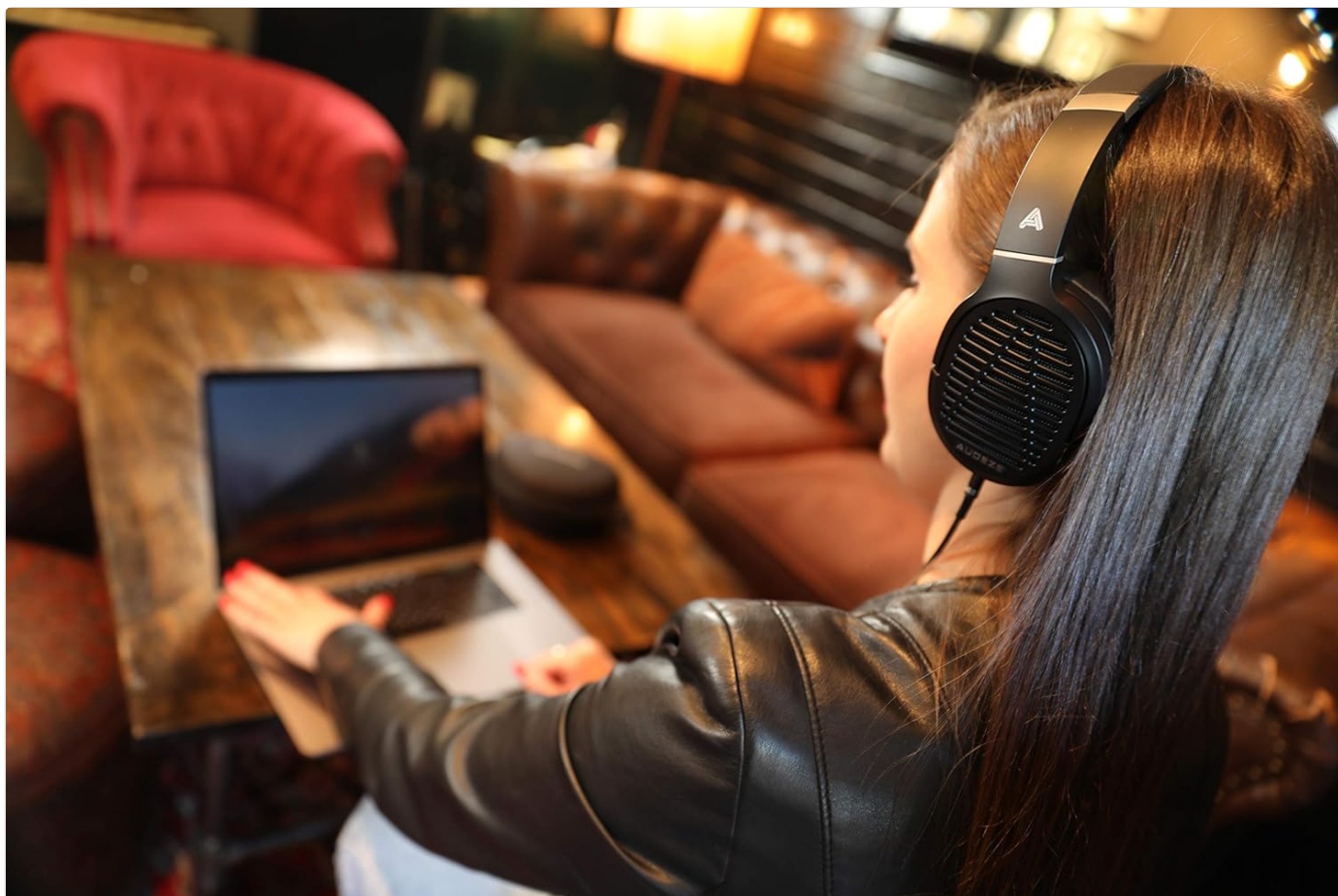


Figure 5.1: A user wearing the Audeze LCD-1 headphones, demonstrating proper fit and use with a laptop.

## 6. OPERATING

---

### 6.1 Audio Playback

Once connected to your audio source, begin playback from your device. Adjust the volume on your audio source to a comfortable listening level. The LCD-1 headphones are designed to be easily driven by most portable devices and audio interfaces without the need for a dedicated amplifier, though a high-quality source will enhance the listening experience.

### 6.2 Optimal Listening Experience

- For the best sound quality, use high-resolution audio files or streaming services.
- Ensure the audio cable is securely connected to both earcups and your audio source.
- The open-back design means sound will leak out and ambient noise will enter. For critical listening, use in a quiet environment.

## 7. MAINTENANCE

---

### 7.1 Cleaning

- **Ear Pads and Headband:** Wipe gently with a soft, dry, lint-free cloth. Do not use liquid cleaners or solvents.
- **Earcups:** Use a soft, dry brush to remove any dust from the grilles.
- **Cable:** Wipe the cable with a dry cloth if it becomes dirty.

### 7.2 Storage

When not in use, fold the headphones and store them in the provided protective travel case. This will protect them from

dust, scratches, and accidental damage.

## 8. TROUBLESHOOTING

Problem	Possible Cause	Solution
No sound	Cable not connected properly; Audio source volume too low; Incorrect audio output selected on device.	Ensure all cable connections are secure; Increase volume on audio source; Verify correct audio output is selected on your device.
Sound is distorted or unclear	Cable damage; Audio source issue; Volume too high causing clipping.	Try a different audio cable if available; Test with another audio source; Reduce volume.
Headphones are uncomfortable	Improper fit.	Adjust the headband and earcup position until a comfortable fit is achieved. Ensure ear pads fully surround your ears.

## 9. SPECIFICATIONS

Feature	Detail
Model Name	LCD-1
Connectivity Technology	Wired (3.5 mm Jack)
Audio Driver Type	Planar Magnetic Driver
Ear Placement	Over Ear
Form Factor	Over Ear
Material	Memory Foam (ear pads), Leather (carrying case)
Item Weight	250 Grams (8.8 ounces)
Product Dimensions	12.28 x 10.31 x 6.77 inches
Included Components	Protective Case
UPC	819343013093
Manufacturer	Audeze

## 10. WARRANTY AND SUPPORT

### 10.1 Warranty Information

Audeze products typically come with a limited warranty covering manufacturing defects. For specific warranty terms and conditions, including duration and coverage, please refer to the warranty card included with your product or visit the official Audeze website. Keep your proof of purchase for warranty claims.

### 10.2 Customer Support

For technical assistance, troubleshooting beyond this manual, or warranty service, please contact Audeze customer support. You can find contact information on the official Audeze website:

**Website:** [www.audeze.com/support](http://www.audeze.com/support)

Please have your product model number (LCD-1, Model: 210-L1-1200-00) and proof of purchase ready when contacting

support.

